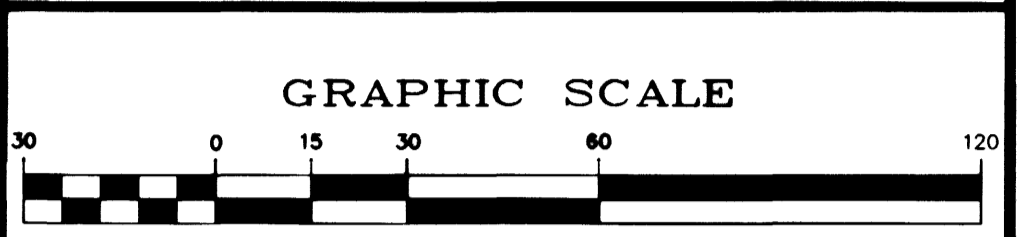
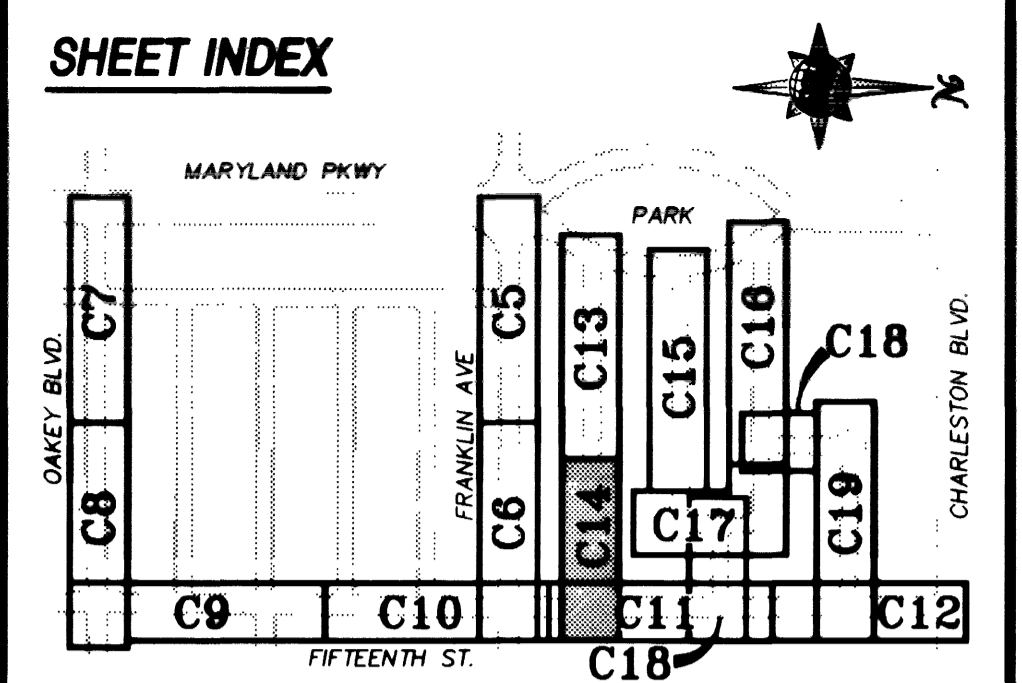


Call before you Dig
1-800-227-2600
Nevada Power, Environment and Safety Services Department

Call before you Overhead
1-702-593-6111
Nevada Power, Environment and Safety Services Department

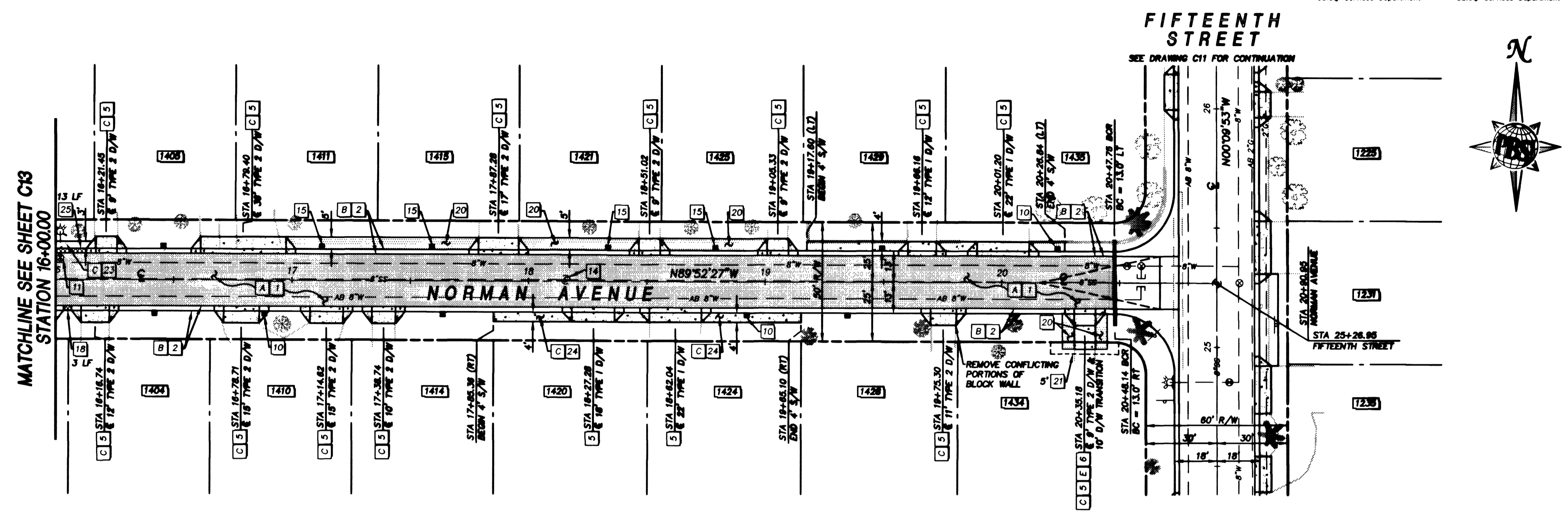


BASIS OF BEARING
S00°05'58"E, BEING THE WEST LINE OF THE NW 1/4 OF SECTION 2, T.21S, R.61E, AS SHOWN ON RECORD OF SURVEY FILE #2, PAGE 84.

BENCHMARK
ELEVATIONS ARE BASED ON THE FOLLOWING CLV BENCHMARKS:

STATION	NGVD88 ELEVATION (FT)	LOCATION
2LV11 02W6	1991.490	RIVET AND PLATE - 1/2 SE RETURN OF OAKLEY BLVD. & 15TH STREET
2LV11 02NW6	1992.994	RIVET AND PLATE - 1/2 NE RETURN OF MARYLAND PKWY. & FRANKLIN AVE.
2LV11 02W4	1997.410	RIVET AND PLATE - 1/2 NE RETURN OF OAKLEY BLVD. & MARYLAND PKWY.

CAUTION
EXISTING UTILITIES ARE LOCATED ON THE PLANS FROM A SEARCH OF AVAILABLE RECORDS. CONTRACTOR TO VERIFY LOCATIONS AND DEPTHS PRIOR TO CONSTRUCTION.



Remin Craft
LWWD DATE 8-31-98

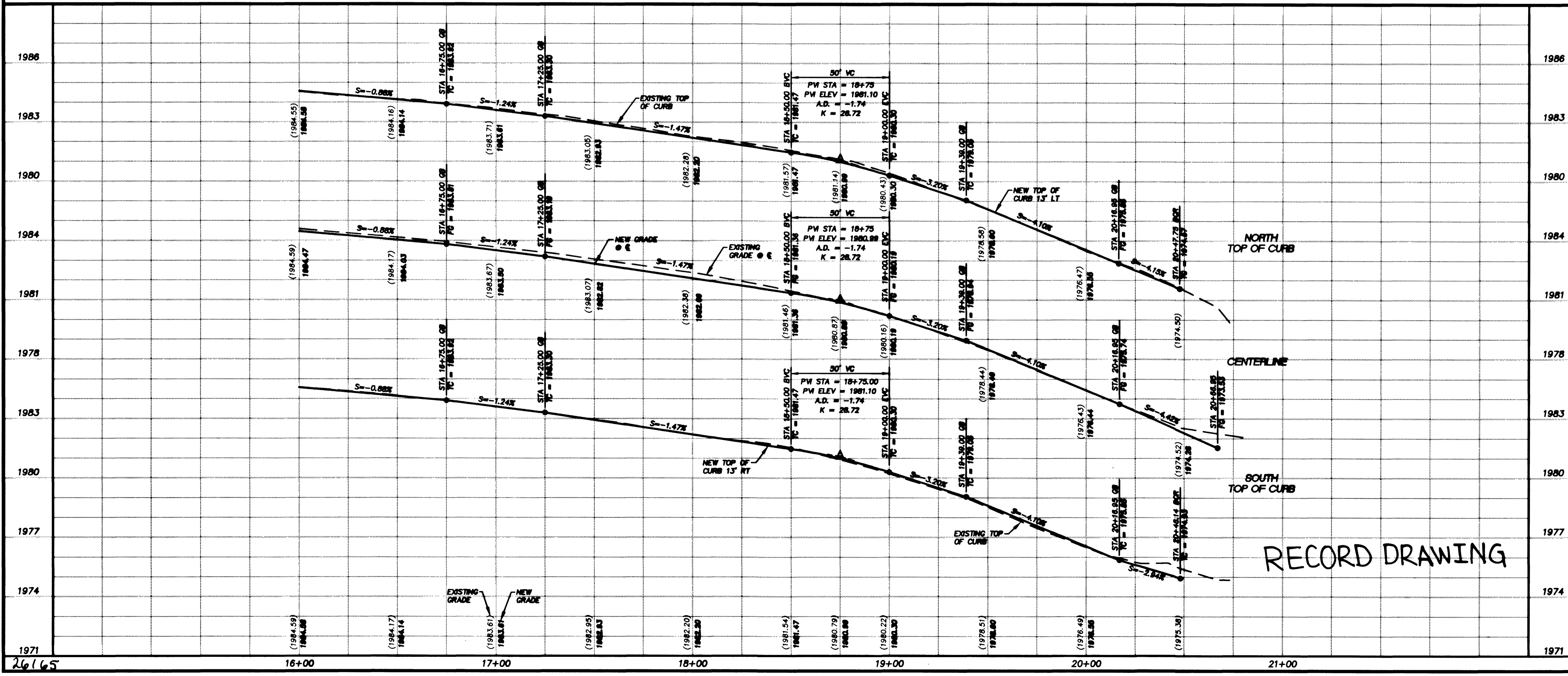
REVISIONS

NO.	DATE	DESCRIPTION

STREET REHABILITATION DESIGN
DESIGNED BY: W. HORLACHER
DRAWN BY: AAS/LSB
JOB NO.: 51451
DATE: AUG 28, 1998

PROJ. ENGINEER
STATE OF NEVADA
DATE: 8/28/98
No. 10,739

PBSI
Professional Services
1000 S. High Street, Suite 1000
Las Vegas, NV 89102
Tel: 702/735-7200
Fax: 702/735-7200



- KEY NOTES**
- REMOVAL ITEMS:**
- A REMOVE EXISTING AC PAVEMENT AND BASE COURSE.
 - B REMOVE EXISTING CURB & GUTTER.
 - C REMOVE EXISTING SIDEWALK & RESIDENTIAL DRIVEWAY.
 - D REMOVE EXISTING VALLEY GUTTER.
 - E REMOVE EXISTING CONCRETE DRIVEWAY TRANSITION.
 - F REMOVE EXISTING ROLL CURB & GUTTER.
 - G ABANDON EXISTING MANHOLE PER DETAIL "B" DWG C26.
- CONSTRUCTION ITEMS:**
- 1 CONSTRUCT STRUCTURAL SECTION PER TYPICAL SECTIONS, SEE DWG C3.
 - 2 CONSTRUCT 'L' TYPE CURB & GUTTER PER STD DWG #216.
 - 3 CONSTRUCT 'S' SIDEWALK PER STD DWG #234.
 - 4 CONSTRUCT 'B' VALLEY GUTTER PER STD. DWG. #228 & DETAIL "A" DWG C26.
 - 5 CONSTRUCT RESIDENTIAL DRIVEWAY PER DETAIL "B" DWG C26.
 - 6 CONSTRUCT CONCRETE DRIVEWAY TRANSITION. (MATCH EXISTING THICKNESS - 4" MIN., AND EXISTING WIDTH).
 - 7 SAW CUT & MATCH EXISTING.
 - 8 CONSTRUCT SIDEWALK RAMP PER STD. DWG. #235.
 - 9 CONSTRUCT SIDEWALK RAMP PER DETAIL "E" DWG C26.
 - 10 INSTALL LWWD METER BOX & ADJUST SERVICE CONNECTION AS NEEDED PER UDACS STD. PLATE #18.
 - 11 ADJUST EXISTING VALVE BOX TO FG PER UDACS PLATE #8.
 - 12 CONSTRUCT SEWER REPAIR PER DETAIL "A" DWG C27.
 - 13 CONSTRUCT CONCRETE WALKWAY TRANSITION. (MATCH EXISTING THICKNESS - 4" MIN., AND EXISTING WIDTH).
 - 14 ADJUST MANHOLE RING TO FG PER STD. DWG. #408.
 - 15 ADJUST LWWD METER BOX & ADJUST SERVICE CONNECTION AS NEEDED PER UDACS STD. PLATE #18.
 - 16 NOT USED
 - 17 SET TYPE III MONUMENT PER STD. DWG. #241.
 - 18 PAINT CURB RED (LENGTH AS SHOWN).
 - 19 CONSTRUCT ASPHALT PATCH PER DETAIL "C" DWG C26.
 - 20 REGRADE TO DRAIN (IRRIGATION & LANDSCAPE REPAIR). REFER TO NOTE #7 DWG C2.
 - 21 CONSTRUCTION EASEMENT AS NOTED.
 - 22 CONSTRUCT STRUCTURAL SECTION PER SECTION 6 DWG C3.
 - 23 CONSTRUCT SIDEWALK PER STD. DWG. #234 (WIDTH PER PLANS)
 - 24 CONSTRUCT '4' SIDEWALK PER STD. DWG. #234.
 - 25 PAINT CURB RED 15" EACH SIDE OF FIRE HYDRANT EXCEPT FOR DRIVEWAYS.
 - 26 REMOVE AND RESET EXISTING SIGN.
 - 27 CONSTRUCT CURB WALL PER DETAIL "G" DWG C26.
 - 28 CONSTRUCT GEGRID LAP PER DETAIL "B" DWG C27.

Department of Public Works

HUNTRIDGE NEIGHBORHOOD - PHASE 3
NORMAN AVENUE PLAN AND PROFILE
STA 16+00.00 TO STA 20+90.85

CITY OF LAS VEGAS
NEVADA

DRAWING No. 14
C14
PLAN# 107-V2813 27