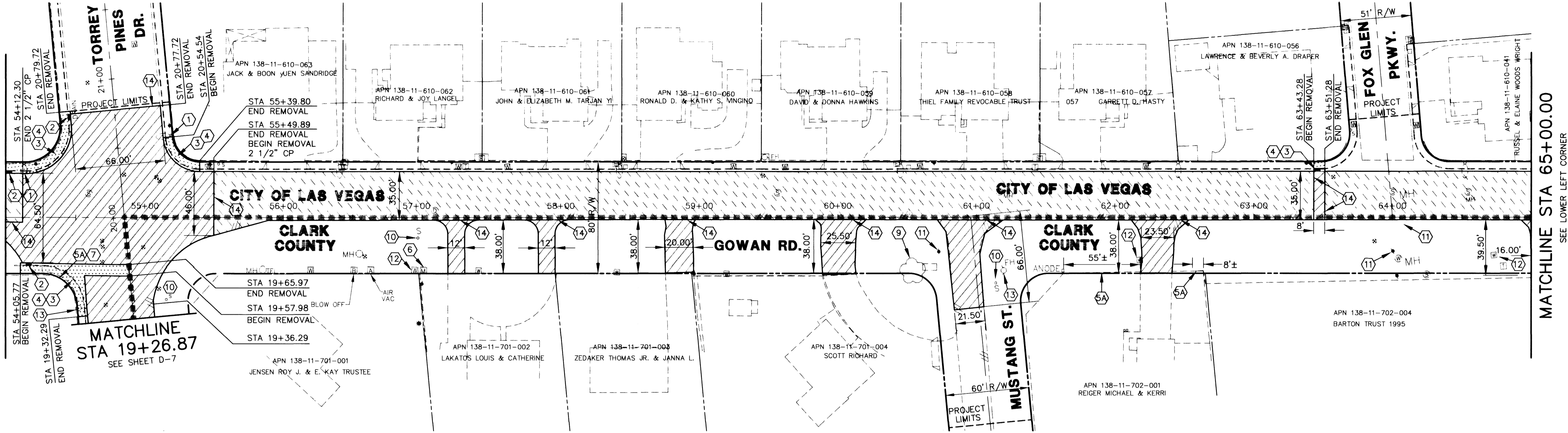
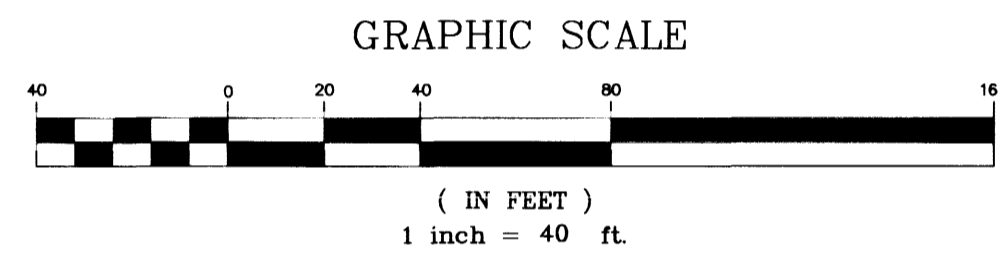


SEE SHEET D-2
MATCHLINE STA 54+00.00



PLAN - GOWAN ROAD



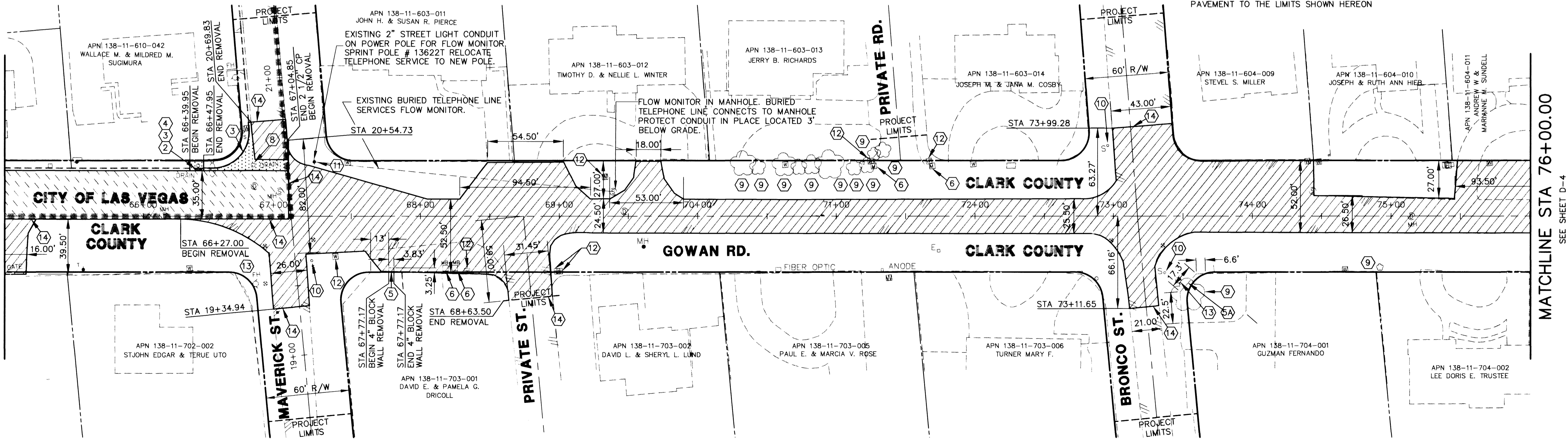
KEYNOTES

- ① REMOVE EXISTING STREET LIGHT POLE & LUMINAIRE & RETURN TO CITY OF LAS VEGAS IF NOT ACCEPTABLE TO USE IN ANOTHER LOCATION WITHIN THE PROJECT (SEE TRAFFIC & STREET LIGHT SHEETS, NOTE 22 FOR FOUNDATION & SIDEWALK TREATMENT)
- ② REMOVE EXISTING CURB DROP INLET
- ③ REMOVE EXISTING CONCRETE CURB & GUTTER & SPANDREL/VALLEY GUTTER AS SHOWN HEREON
- ④ REMOVE EXISTING SIDEWALK
- ⑤ REMOVE EXISTING BLOCK WALL
- ⑤A REMOVE EXISTING BLOCK WALL OUT OF RIGHT-OF-WAY (SEE CONSTRUCTION SHEETS FOR NEW LOCATION)
- ⑥ RELOCATE EXISTING BRICK MAIL BOXES OUT OF RIGHT-OF-WAY (SEE CONSTRUCTION SHEETS FOR NEW LOCATION)
- ⑦ REMOVE EXISTING WOOD/CHAIN LINK FENCE OUT OF RIGHT-OF-WAY (SEE CONSTRUCTION SHEETS FOR NEW LOCATION)
- ⑧ REMOVE EXISTING VALLEY GUTTER INLET
- ⑨ REMOVE EXISTING TREES/VEGETATION WITHIN THE RIGHT-OF-WAY
- ⑩ REMOVE EXISTING SIGN & FOUNDATION & RETURN SIGN TO CITY OF LAS VEGAS
- ⑪ REMOVE EXISTING POWER POLE (BY OTHERS) CONTRACTOR TO RELOCATE NECESSARY SERVICES TO NEW POLE LOCATION.
- ⑫ RELOCATE EXISTING WATER METER (SEE CONSTRUCTION SHEETS FOR NEW LOCATION WITHIN SIDEWALK)
- ⑬ RELOCATE EXISTING FIRE HYDRANT (SEE UTILITY SHEETS FOR NEW LOCATIONS)
- ⑭ SAWCUT EXISTING ASPHALTIC CONCRETE PAVEMENT TO THE LIMITS SHOWN HEREON

DEMOLITION LEGEND

- 1/2" COLD MILLING
- REMOVE ASPHALT CONCRETE PAVEMENT TO THE EXISTING PAVEMENT LIMITS
- 2 1/2" COLD MILLING
- REMOVE EXIST CONCRETE CURB, GUTTER, SIDEWALK, CROSS GUTTER & SPANDREL (TYP)

SEE UPPER RIGHT CORNER
MATCHLINE STA 65+00.00



PLAN - GOWAN ROAD

REVISION	
DATE	

POGEMEYER DESIGN GROUP
ENGINEERS PLANNERS SURVEYORS
LANDSCAPE ARCHITECTS

LAS VEGAS, NEVADA 89128 (702) 255-8100
2601 NORTH TENAYA WAY

GOWAN ROAD IMPROVEMENT PROJECT
FROM US-95 TO DECATUR BOULEVARD
DEMOLITION PLAN
GOWAN RD.
STA 54+00 TO 76+00

JOB NUMBER	1003003
DESIGNED BY	JJD
DRAWN BY	RCP
CHECKED BY	TEP
DATE	05.11.98

D-3
11 of 63

Call
before you
Dig.
1-800-227-2600