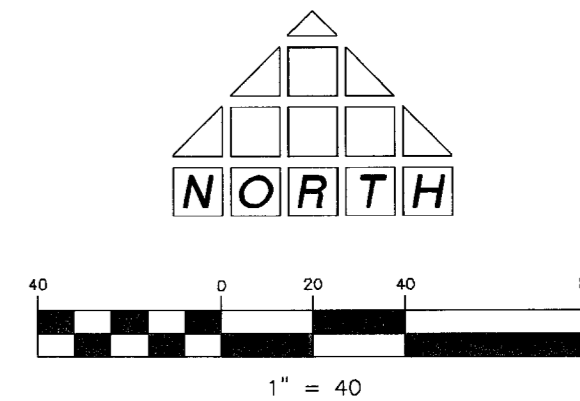


CONDITION OF APPROVAL:

ZONE CHANGE / ZON-6726
 APPROVED ZONING R-PD11
 CITY COUNCIL 7-20-05

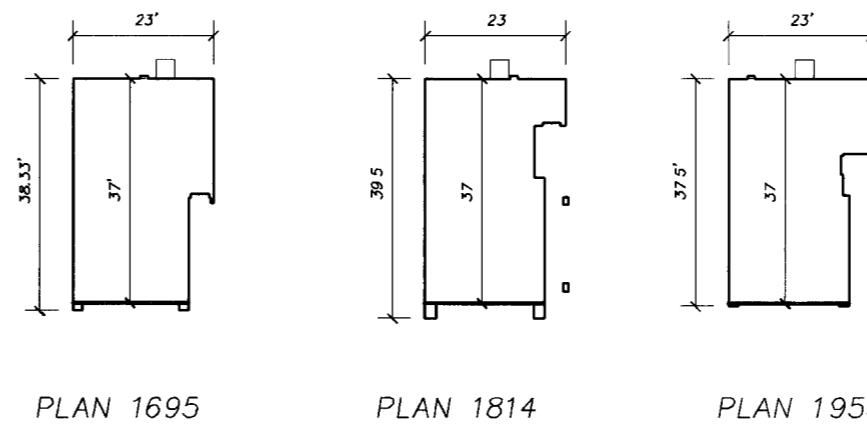
SDR-6727
 NO TURF SHALL BE PERMITTED IN THE NON-RECREATIONAL COMMON AREAS, SUCH AS MEDIANS AND AMENITY ZONES IN THE DEVELOPMENT
 PROPERTY LINE WALLS SHALL BE A DECORATIVE BLOCK WALL, WITH AT LEAST 20 PERCENT CONTRASTING MATERIALS

TMP-8886

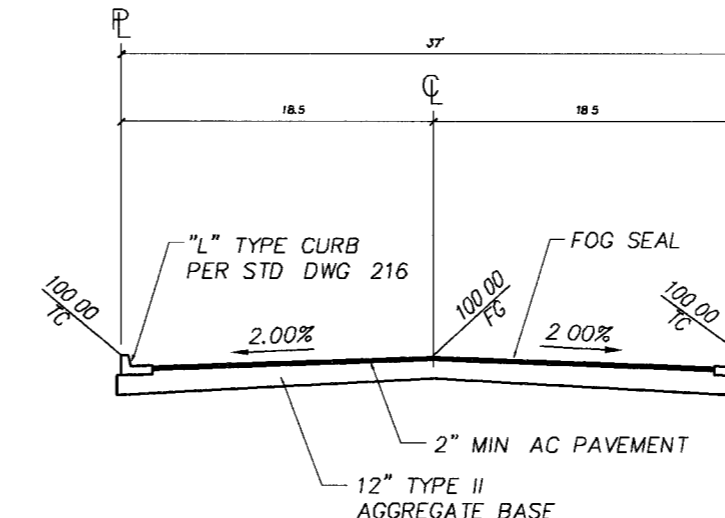


LEGEND

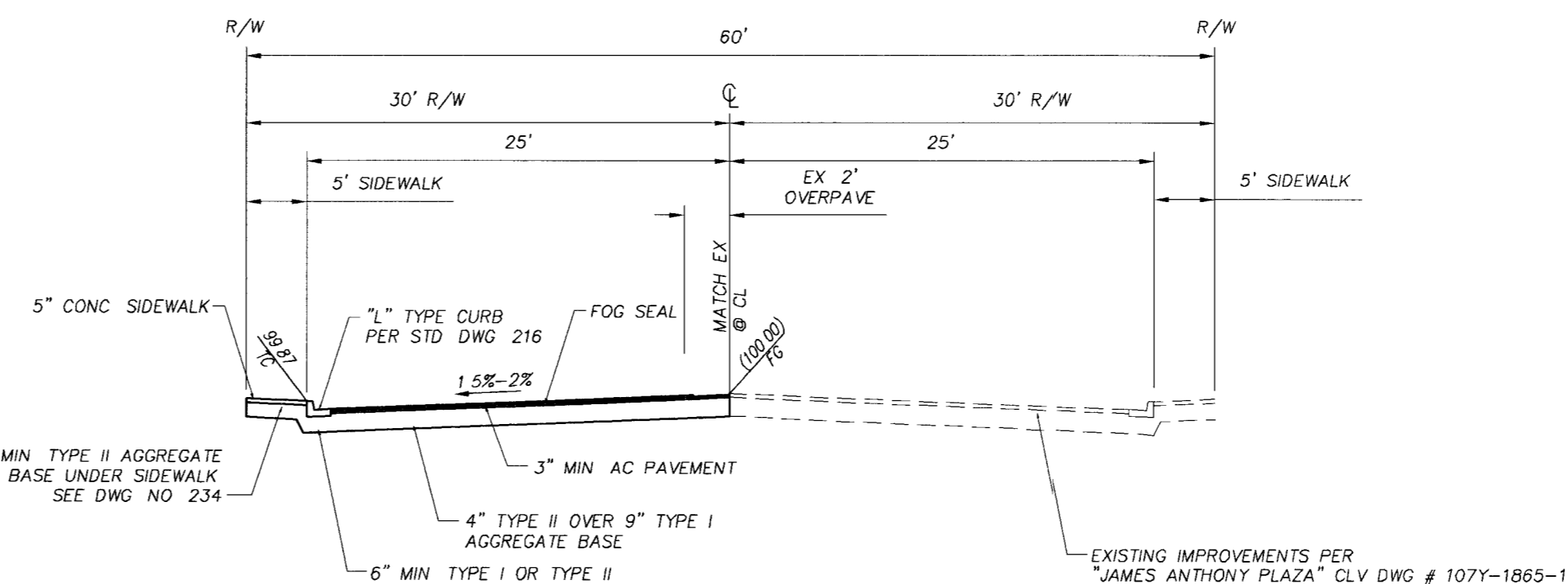
- PROPOSED 250W HPS STREETLIGHT
- PROPOSED 150W HPS STREETLIGHT
- PROPOSED 100W HPS STREETLIGHT
- EXISTING STREETLIGHT
- TRANSFORMER
- SCARP
- PROPOSED FIRE HYDRANT ASSEMBLY
- EXISTING FIRE HYDRANT ASSEMBLY
- BLOCK WALL
- RETAINING WALL



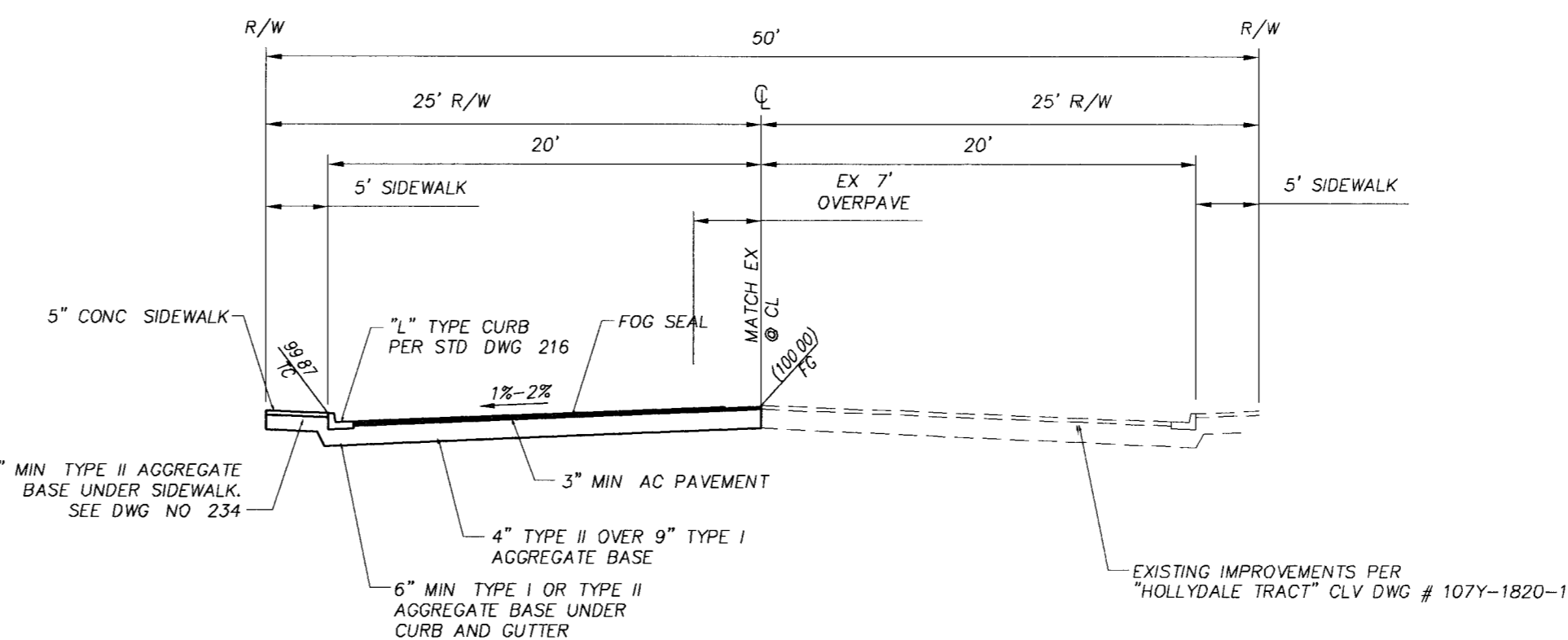
TYPICAL FOOTPRINTS
N T S



37' PRIVATE STREET SECTION
N T S



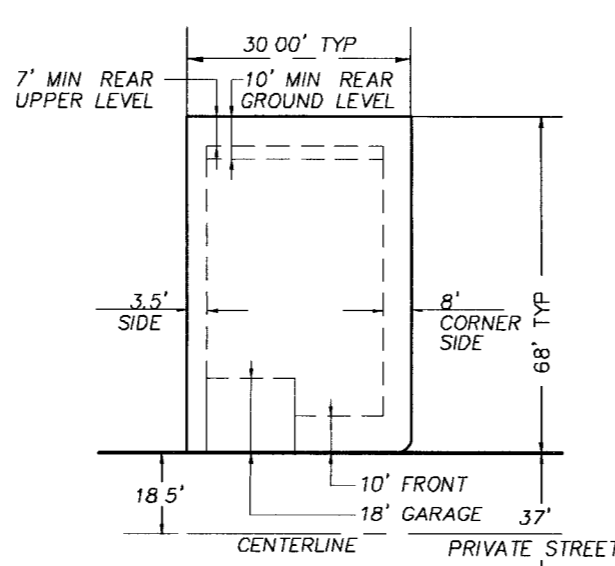
60' PUBLIC STREET SECTION - HOLLY AVENUE
NOT TO SCALE



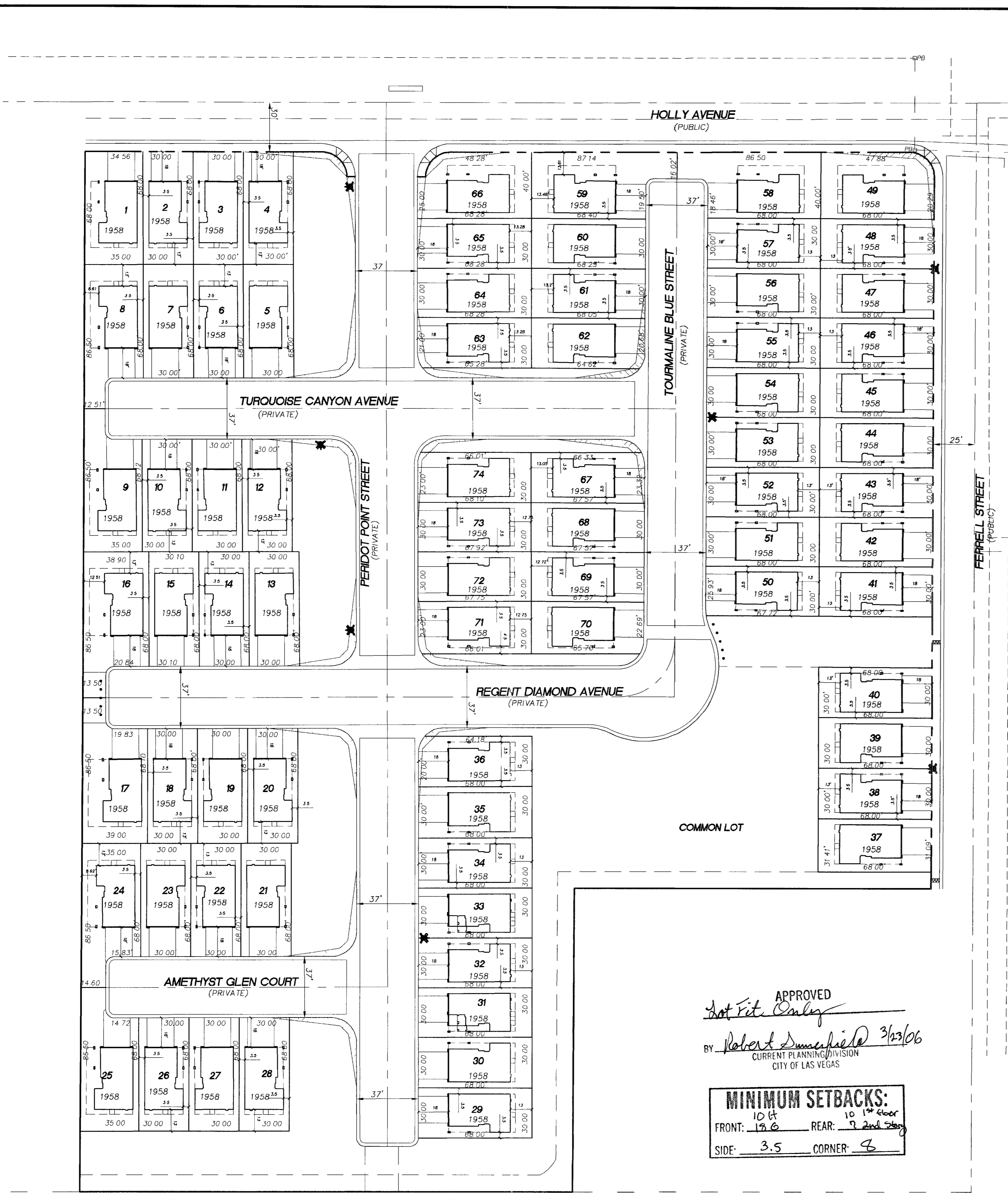
50' PUBLIC STREET SECTION - FERRELL STREET
NOT TO SCALE

APPROVED
Lot Fit Only
 BY *Robert D. ...* 3/23/06
 CURRENT PLANNING DIVISION
 CITY OF LAS VEGAS

MINIMUM SETBACKS:
 10 FT
 FRONT: 17.6 REAR: 7' 2nd 5' 3rd
 SIDE: 3.5 CORNER: 6



LOT DETAIL
(TYPICAL SETBACKS)
N T S



BENCHMARK
 CITY OF LAS VEGAS VERTICAL CONTROL POINT "DLV01 195ws", BEING A RIVET & PLATE IN TOP OF CURB @ NE CORNER OF DECATUR AND VEGAS DRIVE
 ELEVATION 2203.33 (FEET)
 671.576 (METERS)
 CITY OF LAS VEGAS VERTICAL CONTROL v2002 BASED ON
 NORTH AMERICAN VERTICAL DATUM OF 1988 (NAVD 88)

AVOID CALLING UNDERGROUND UTILITY LINES IF IT'S COSTLY
 Call before you Dig
 1-800-227-2600
 UNDERGROUND SERVICE (USA)

AVOID OVERHEAD POWER LINE CONTACT
 Call before you Overhead
 1-702-227-2929
 NEVADA POWER ENVIRONMENT SAFETY SERVICES DEPARTMENT

CALL BEFORE YOU DIG
 CALL BEFORE YOU OVERHEAD
 CALL BEFORE YOU UNDERGROUND
 1-702-455-7511
 1-702-227-2929

BASIS OF BEARING
 NORTH 89°55'00" WEST, BEING THE BEARING OF THE SOUTH LINE OF THE SOUTHWEST QUARTER (SW 1/4) OF THE SOUTHWEST QUARTER (SW 1/4) OF SECTION 20, TOWNSHIP 20 SOUTH, RANGE 61 EAST, M.D.M., CITY OF LAS VEGAS, CLARK COUNTY, NEVADA AS RECORDED IN FILE 98 OF SURVEYS, AT PAGE 01, OFFICIAL RECORDS OF CLARK COUNTY, NEVADA

LOT FIT ANALYSIS
 HOLLY / FERRELL

| LOT | PLAN 1695 | PLAN 1814 | PLAN 1958 | DRIVEWAY | DRIVEWAY SLOPE % | DROP GARAGE |
|-----|-----------|-----------|-----------|----------|------------------|-------------|
| 1 | ● | ● | ● | L | 8.9% | N |
| 2 | ● | ● | ● | R | 8.7% | N |
| 3 | ● | ● | ● | L | 8.9% | N |
| 4 | ● | ● | ● | L | 8.8% | N |
| 5 | ● | ● | ● | L | 6.0% | N |
| 6 | ● | ● | ● | R | 6.1% | N |
| 7 | ● | ● | ● | L | 5.9% | N |
| 8 | ● | ● | ● | L | 8.2% | N |
| 9 | ● | ● | ● | L | 8.2% | N |
| 10 | ● | ● | ● | R | 5.9% | N |
| 11 | ● | ● | ● | L | 6.1% | N |
| 12 | ● | ● | ● | R | 6.0% | N |
| 13 | ● | ● | ● | L | 8.4% | N |
| 14 | ● | ● | ● | R | 6.2% | N |
| 15 | ● | ● | ● | L | 6.1% | N |
| 16 | ● | ● | ● | R | 8.3% | N |
| 17 | ● | ● | ● | L | 6.4% | N |
| 18 | ● | ● | ● | R | 5.6% | N |
| 19 | ● | ● | ● | L | 5.5% | N |
| 20 | ● | ● | ● | R | 5.2% | N |
| 21 | ● | ● | ● | L | 5.9% | N |
| 22 | ● | ● | ● | R | 5.7% | N |
| 23 | ● | ● | ● | L | 5.3% | N |
| 24 | ● | ● | ● | R | 6.8% | N |
| 25 | ● | ● | ● | L | 5.9% | N |
| 26 | ● | ● | ● | R | 5.5% | N |
| 27 | ● | ● | ● | L | 5.9% | N |
| 28 | ● | ● | ● | R | 5.5% | N |
| 29 | ● | ● | ● | L | 5.8% | N |
| 30 | ● | ● | ● | R | 5.4% | N |
| 31 | ● | ● | ● | L | 5.8% | N |
| 32 | ● | ● | ● | R | 5.4% | N |
| 33 | ● | ● | ● | L | 5.8% | N |
| 34 | ● | ● | ● | R | 5.4% | N |
| 35 | ● | ● | ● | L | 5.8% | N |
| 36 | ● | ● | ● | R | 5.4% | N |
| 37 | ● | ● | ● | L | 5.3% | N |
| 38 | ● | ● | ● | R | 5.4% | N |
| 39 | ● | ● | ● | L | 5.2% | N |
| 40 | ● | ● | ● | R | 5.0% | N |
| 41 | ● | ● | ● | L | 7.3% | N |
| 42 | ● | ● | ● | R | 7.5% | N |
| 43 | ● | ● | ● | L | 7.4% | N |
| 44 | ● | ● | ● | R | 9.0% | N |
| 45 | ● | ● | ● | L | 8.3% | N |
| 46 | ● | ● | ● | R | 5.7% | N |
| 47 | ● | ● | ● | L | 5.6% | N |
| 48 | ● | ● | ● | R | 5.7% | N |
| 49 | ● | ● | ● | L | 5.8% | N |
| 50 | ● | ● | ● | R | 6.3% | N |
| 51 | ● | ● | ● | L | 5.6% | N |
| 52 | ● | ● | ● | R | 8.5% | N |
| 53 | ● | ● | ● | L | 5.4% | N |
| 54 | ● | ● | ● | R | 8.1% | N |
| 55 | ● | ● | ● | L | 5.7% | N |
| 56 | ● | ● | ● | R | 5.6% | N |
| 57 | ● | ● | ● | L | 5.7% | N |
| 58 | ● | ● | ● | R | 5.6% | N |
| 59 | ● | ● | ● | L | 5.7% | N |
| 60 | ● | ● | ● | R | 5.6% | N |
| 61 | ● | ● | ● | L | 8.6% | N |
| 62 | ● | ● | ● | R | 8.8% | N |
| 63 | ● | ● | ● | L | 6.1% | N |
| 64 | ● | ● | ● | R | 6.3% | N |
| 65 | ● | ● | ● | L | 5.8% | N |
| 66 | ● | ● | ● | R | 6.0% | N |
| 67 | ● | ● | ● | L | 6.1% | N |
| 68 | ● | ● | ● | R | 6.2% | N |
| 69 | ● | ● | ● | L | 5.8% | N |
| 70 | ● | ● | ● | R | 5.7% | N |
| 71 | ● | ● | ● | L | 6.1% | N |
| 72 | ● | ● | ● | R | 5.4% | N |
| 73 | ● | ● | ● | L | 5.4% | N |
| 74 | ● | ● | ● | R | 4.8% | N |

● FITS ON LOT
 ○ DOESN'T FIT ON LOT

SCALE 1" = 40'
 DRAWN BY
 DESIGNED BY
 CHECKED BY
 COMMENTS ADDRESSED BY
 PROJECT NO. 001.05036
 REV. DATE BY

THOMSON CONSULTING ENGINEERS
 3161 E. WARM SPRINGS ROAD, SUITE 200
 LAS VEGAS, NEVADA 89120
 702-932-6125 FAX 702-932-6129

RICHMOND AMERICAN HOMES
 HOLLY / FERRELL
 LOTFIT ANALYSIS

RECEIVED
 FEB 10 2006
 CITY OF LAS VEGAS PERMITS

SHEET 1 OF 1
 DRAWING NO. 10-4-05

89242

P:\001\05036\PL01 PLAN\LOTFIT-30-08.dwg 1/20/2006 11:31:25 AM PST
 REVISION