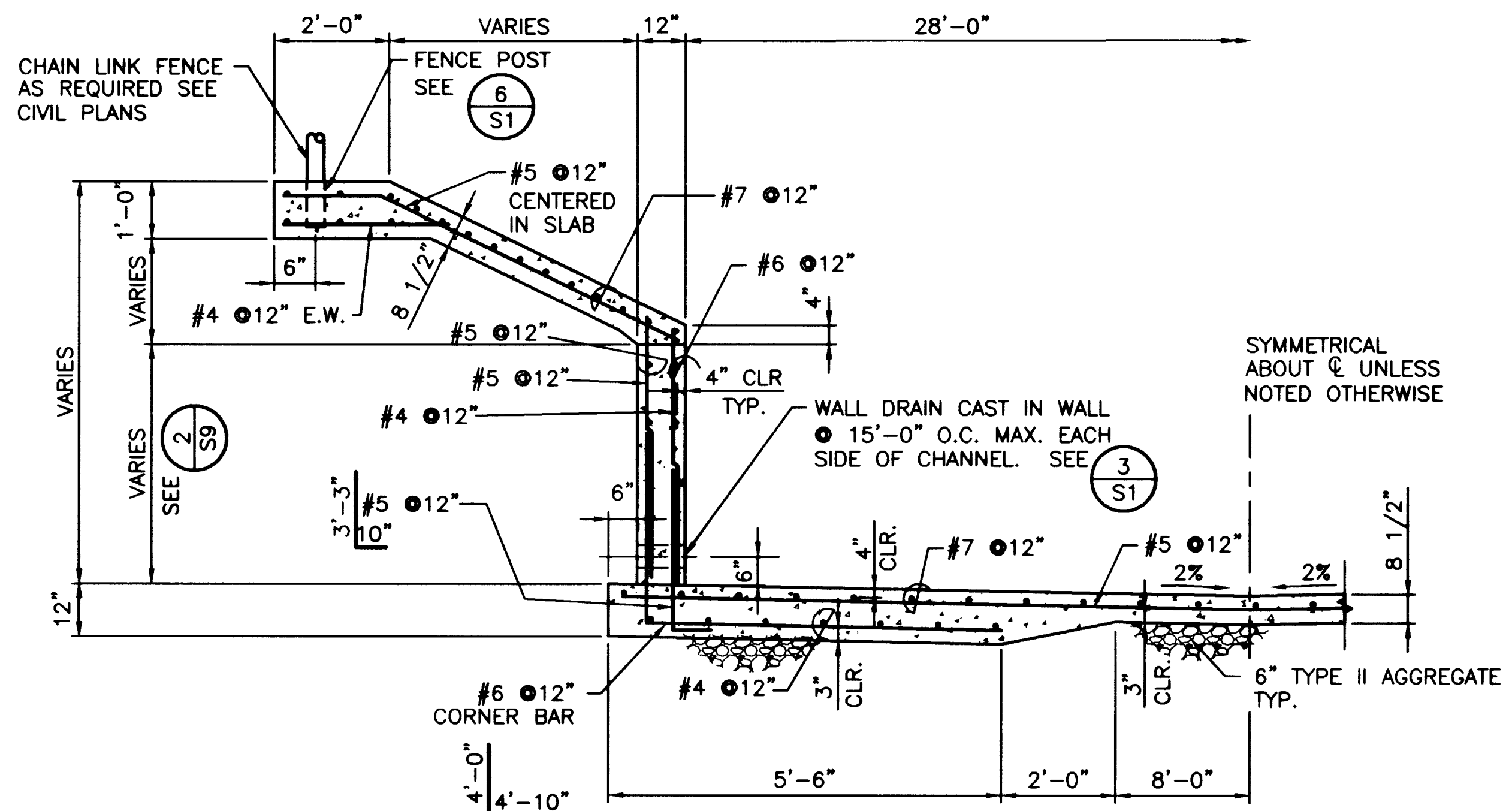


**DRAINAGE SLAB PLAN**

SCALE: N.T.S.

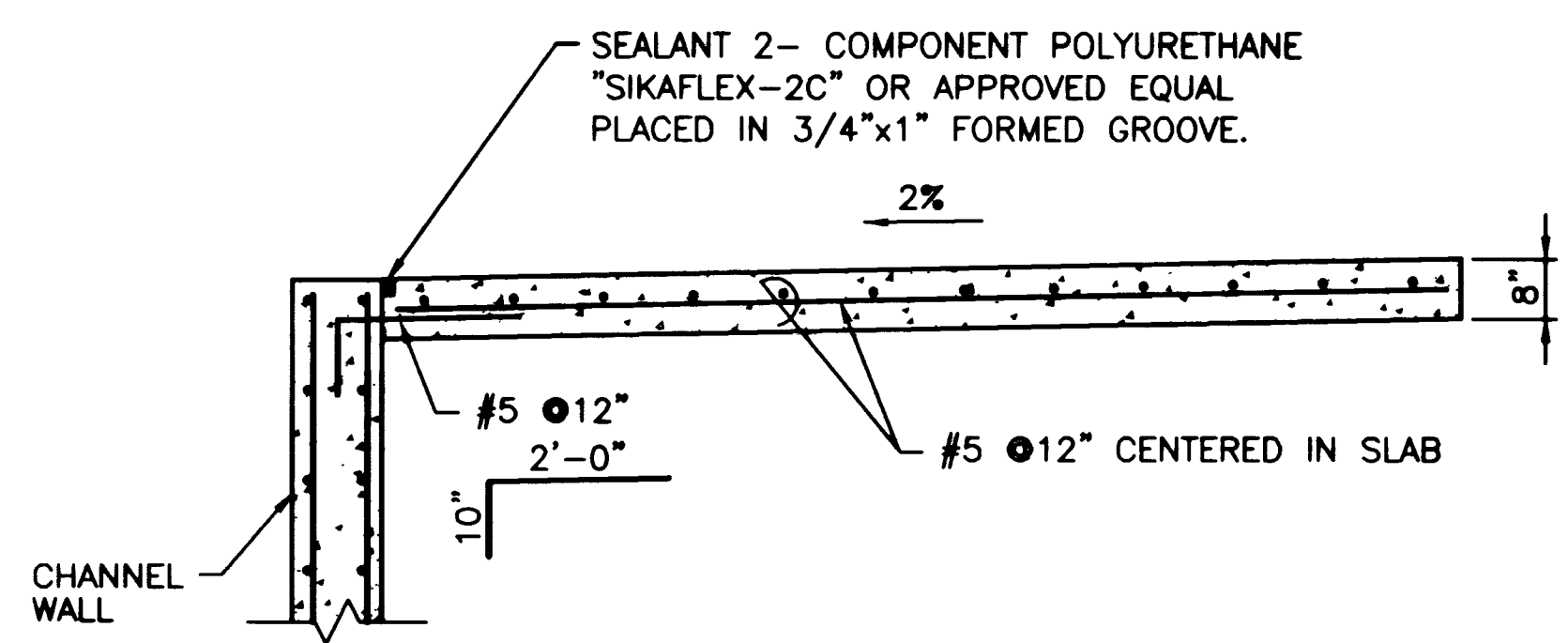
1  
S9



**TRANSITION CHANNEL SECTION**

SCALE: N.T.S.

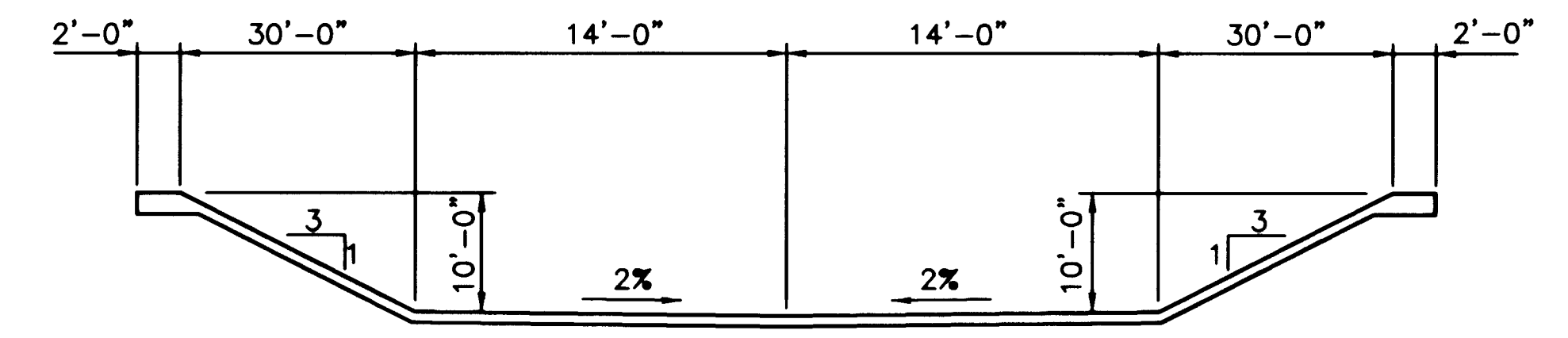
A  
S9



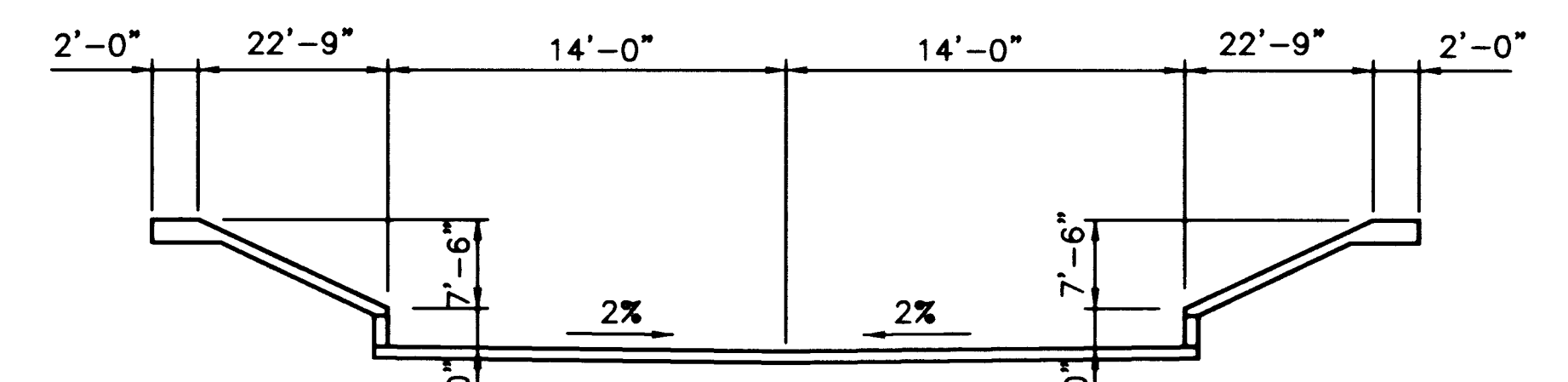
**SECTION**

SCALE: N.T.S.

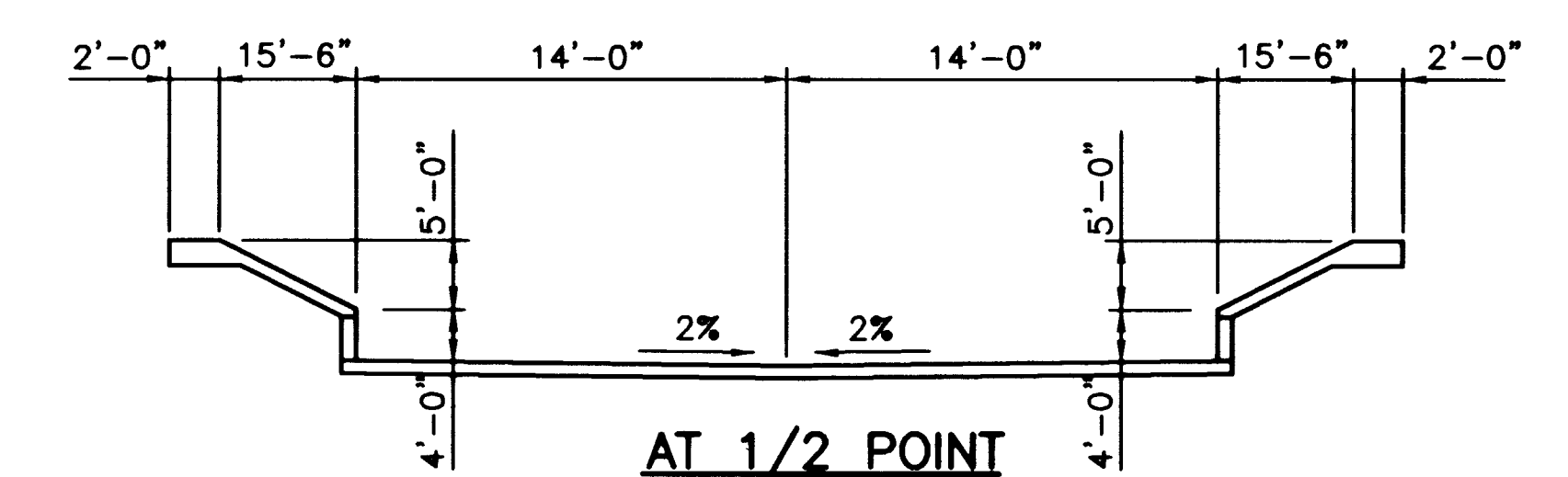
B  
S9



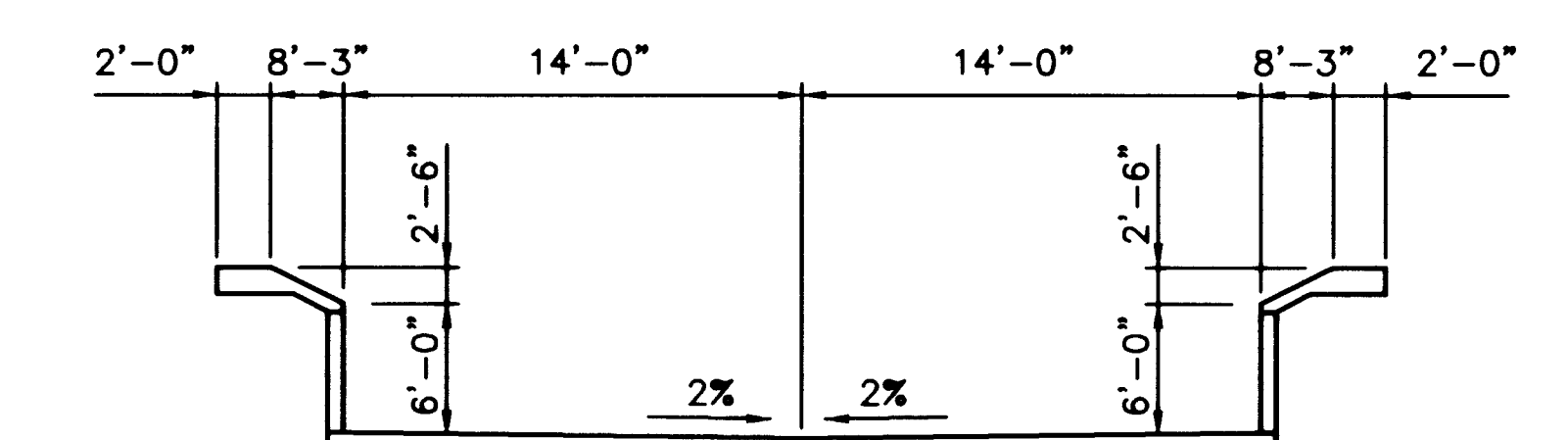
**AT BEGINNING OF TRANSITION CHANNEL**



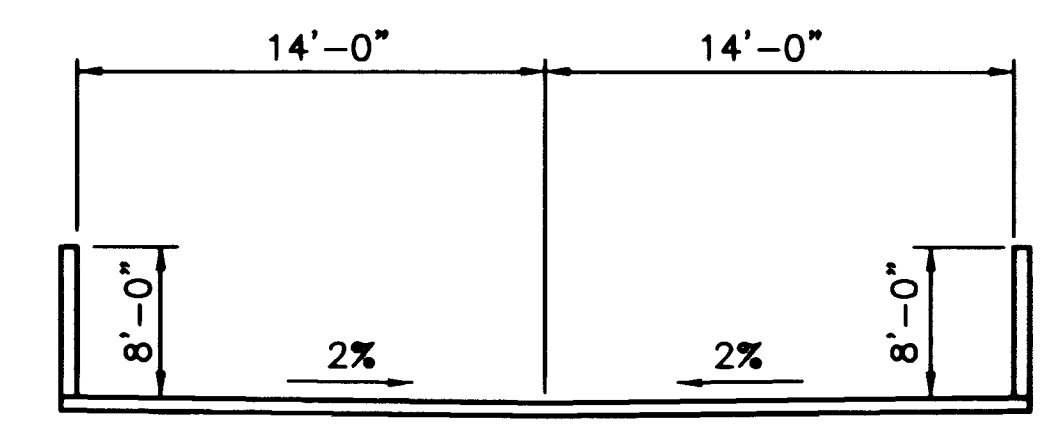
**AT 3/4 POINT**



**AT 1/2 POINT**



**AT 1/4 POINT**



**AT END OF TRANSITION**

**WALL SECTIONS AT TRANSITION CHANNEL**

SCALE: N.T.S.

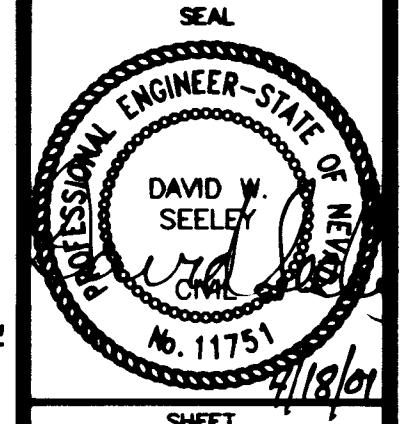
2  
S9

32459



**R2H • CB&L ENGINEERING**  
CONSULTING STRUCTURAL ENGINEERS  
840 GRIER DRIVE, SUITE 320  
LAS VEGAS, NEVADA 89119  
PHONE (702) 280-7000  
FAX (702) 280-7070

DRAWN BY: ALS	4/18/01	DESIGNED BY: DMS	4/18/01	CHECKED BY: DMS	4/18/01	PROJECT NO: 99192	SCALE:	HORIZ. VERT.	SHEET S9	TITLE GILMORE CHANNEL FLOOD CONTROL IMPROVEMENTS	PERMA BILT HOMES 715 S. LAS VEGAS BLVD. SUITE 104 LAS VEGAS, NEVADA 89101 (702) 886-9100	2727 SOUTH RAINBOW BOULEVARD LAS VEGAS, NEVADA 89102-5148 PH. (702) 873-7550 FAX (702) 362-2597 CONSULTING ENGINEERS • PLANNERS • LAND SURVEYORS	neveda vtm	DATE	BY	REV	REVISION
	DATE		BY		REV									REVISION			



SHEET  
S9  
21 OF 22 SHEETS  
DRAWING NO.  
S9 731-74