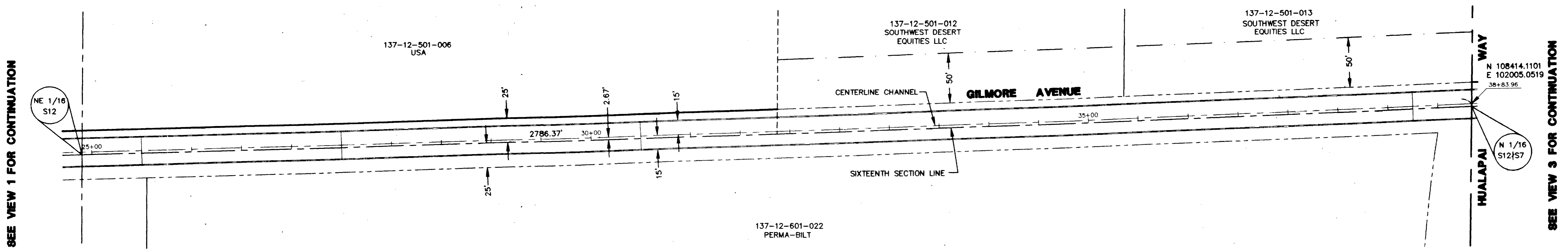
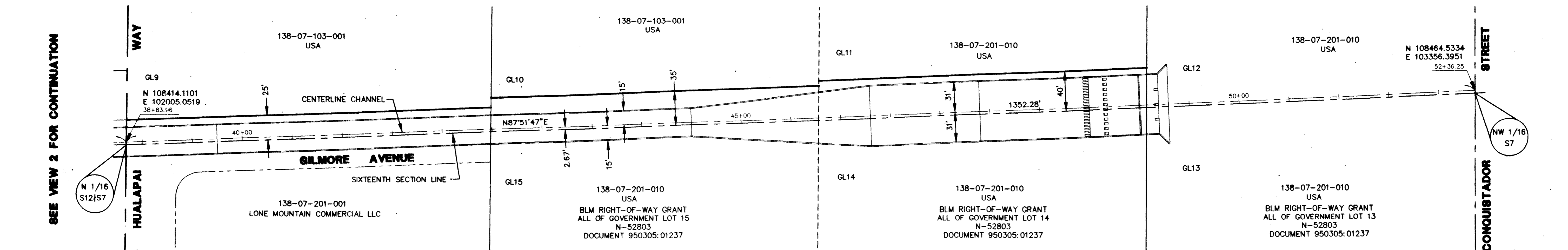


VIEW 1



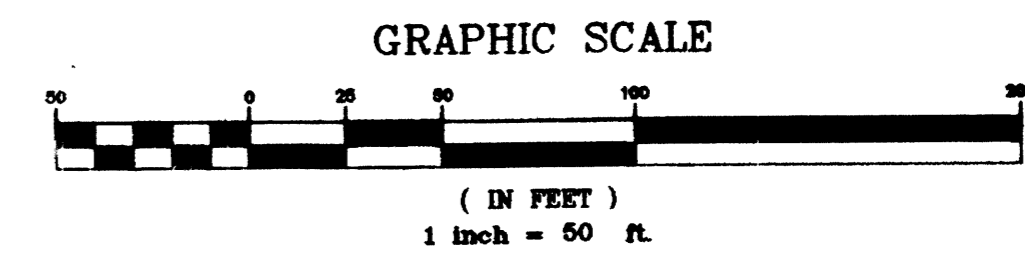
VIEW 2



VIEW 3

LEGEND

- SECTION LINE
- QUARTER SECTION LINE
- SIXTEENTH SECTION LINE
- SIXTY-FOURTH SECTION LINE
- RIGHT-OF-WAY LINE
- PROPERTY LINE
- PROPOSED RIGHT-OF-WAY
- PROPOSED TEMPORARY CONSTRUCTION EASEMENT
- GOVERNMENT LOT



<p>137-12-501-010 SUMMIT HOLDINGS LLC</p> <p>137-12-501-011 JOHN GUTT FAMILY TRUST</p> <p>137-12-501-003 USA</p> <p>137-12-601-020 PERMA-BILT</p> <p>137-12-501-006 USA</p> <p>137-12-501-012 SOUTHWEST DESERT EQUITIES LLC</p> <p>137-12-501-013 SOUTHWEST DESERT EQUITIES LLC</p> <p>137-12-601-022 PERMA-BILT</p> <p>138-07-103-001 USA</p> <p>138-07-103-001 USA</p> <p>138-07-201-010 USA</p> <p>138-07-201-010 USA</p> <p>138-07-201-010 USA</p> <p>138-07-201-010 USA</p> <p>138-07-201-010 USA</p>	<p>DECLARATION OF UTILIZATION DOCUMENT 980902:01646</p> <p>CENTERLINE CHANNEL</p> <p>SIXTEENTH SECTION LINE</p> <p>CENTERLINE CHANNEL</p> <p>SIXTEENTH SECTION LINE</p> <p>CENTERLINE CHANNEL</p> <p>SIXTEENTH SECTION LINE</p> <p>GL9</p> <p>GL10</p> <p>GL11</p> <p>GL12</p> <p>GL13</p> <p>GL14</p> <p>GL15</p>	<p>BORDEN ROAD</p> <p>HUALAPAI WAY</p> <p>HUALAPAI STREET</p> <p>CONQUISTADOR STREET</p>	<p>N 108319.6642 E 99220.2854 10+97.99</p> <p>N 108414.1101 E 102005.0519 38+83.96</p> <p>N 108464.5334 E 103356.3951 52+36.25</p>	<p>SEE VIEW 1 FOR CONTINUATION</p> <p>SEE VIEW 2 FOR CONTINUATION</p> <p>SEE VIEW 3 FOR CONTINUATION</p>	<p>PERMA-BILT HOMES</p> <p>7400 POLLOCK DR SUITE 104 LAS VEGAS, NEVADA 89118 (702) 868-9100</p> <p>2727 SOUTH RAINBOW BOULEVARD LAS VEGAS, NEVADA 89102-5148 PH. (702) 873-7550 FAX (702) 882-2597</p> <p>vtm nevada CONSULTING ENGINEERS & PLANNERS • LAND SURVEYORS</p> <p>INFORMATION SUPPLIED BY CONTRACTOR - MAY 2002</p>	<p>SHEET</p> <p>SC2</p> <p>4 OF 22 SHEETS</p> <p>DRAWING NO. 731-74</p>
--	--	--	--	--	---	--

42424