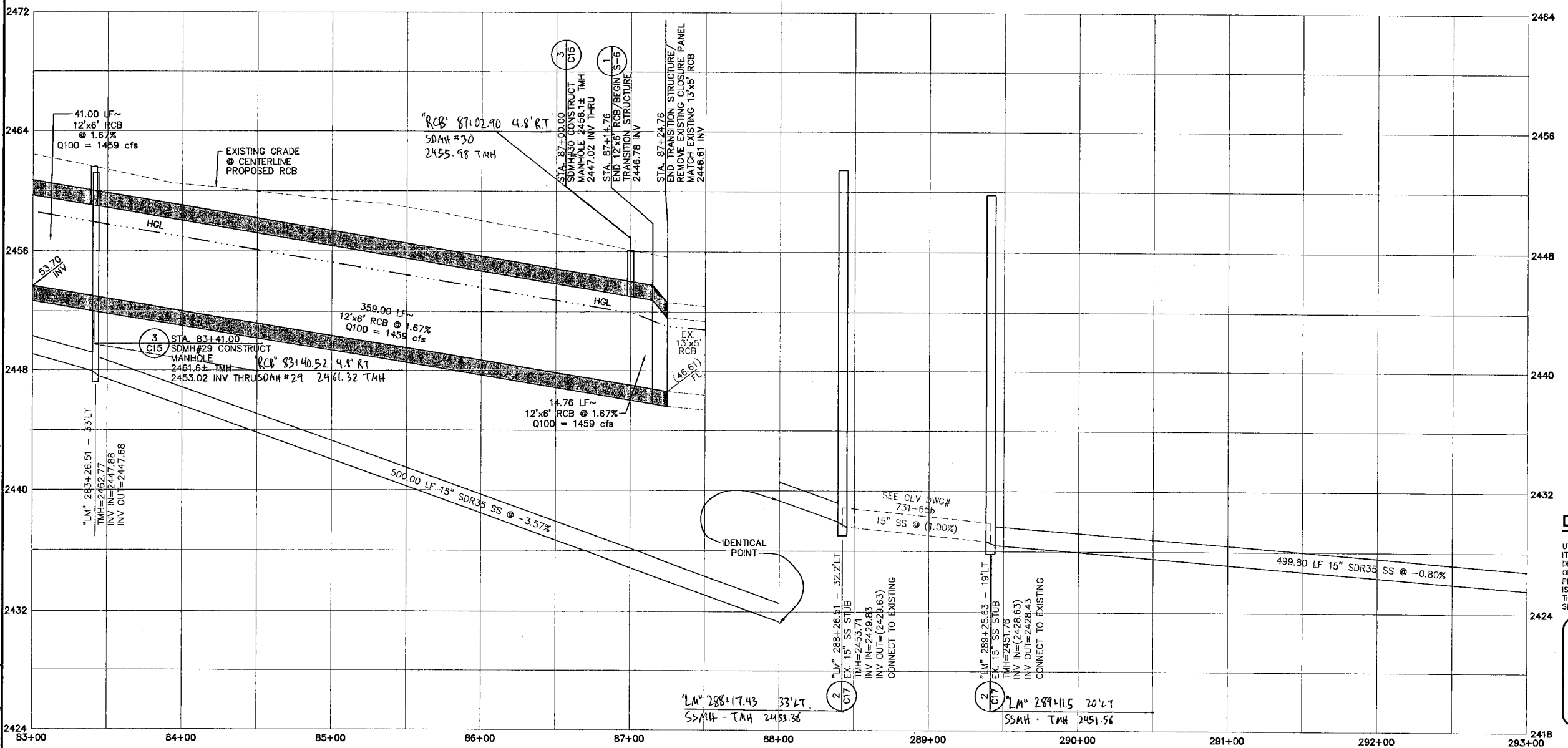
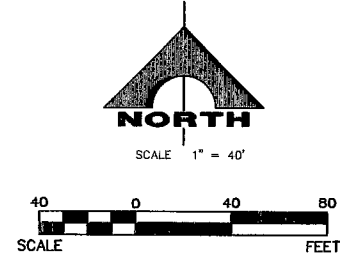
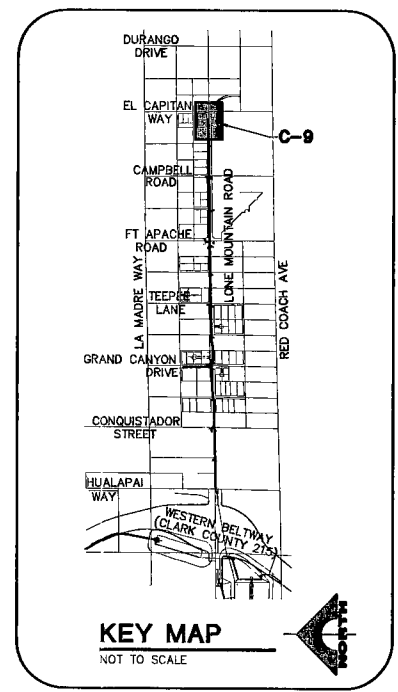


STA. 293+00.00 MATCH LINE SEE SHT. C-9a



Note:
Call Southwest Gas at
365-2296 for Standby
when excavating over or
near High Pressure Gas lines.



DISCLAIMER NOTE

UTILITY LOCATIONS SHOWN HEREON ARE APPROXIMATE ONLY. IT SHALL BE THE CONTRACTOR'S RESPONSIBILITY TO DETERMINE THE EXACT HORIZONTAL AND VERTICAL LOCATION OF ALL EXISTING UNDERGROUND AND OVERHEAD UTILITIES PRIOR TO COMMENCING CONSTRUCTION. NO REPRESENTATION IS MADE THAT ALL EXISTING UTILITIES ARE SHOWN HEREON. THE ENGINEER ASSUMES NO RESPONSIBILITY FOR UTILITIES NOT SHOWN OR UTILITIES NOT SHOWN IN THEIR PROPER LOCATION.

Avoid cutting underground utility lines. It's costly.
Call before you Dig.
1-800-227-2600
UNDERGROUND SERVICE (USA)

Avoid hitting overhead power lines. It's costly.
CALL BEFORE YOU DO OVERHEAD
1-702-227-2929

SHEET		15-22		AS BUILT	
DRAWN BY:		D.V.J.			
DESIGNED BY:		C.M.L.			
CHECKED BY:		W.E.H.			
PROJECT NO.:		412.627		SCALE: 1" = 40' HORIZ 1" = 4' VERT	
SHEET		C-9		23 OF 45 SHEETS	
DRAWING NO.		731-65C			
DEPARTMENT OF PUBLIC WORKS		400 STEWART AVENUE		LAS VEGAS NEVADA, NV 89101	
G.C. WALLACE, INC.		Engineers/Planners/Surveyors		9197 WINDYBROOK BLVD. #800	
		TELEPHONE: (702) 647-2600 FAX: (702) 647-2698			

F:\112-627\veg\mproj\gnc_c09.dwg 05-22-07 08:20:52 D:\johnson

1/01/692 JP

GOWAN NORTH CHANNEL - PHASE IV