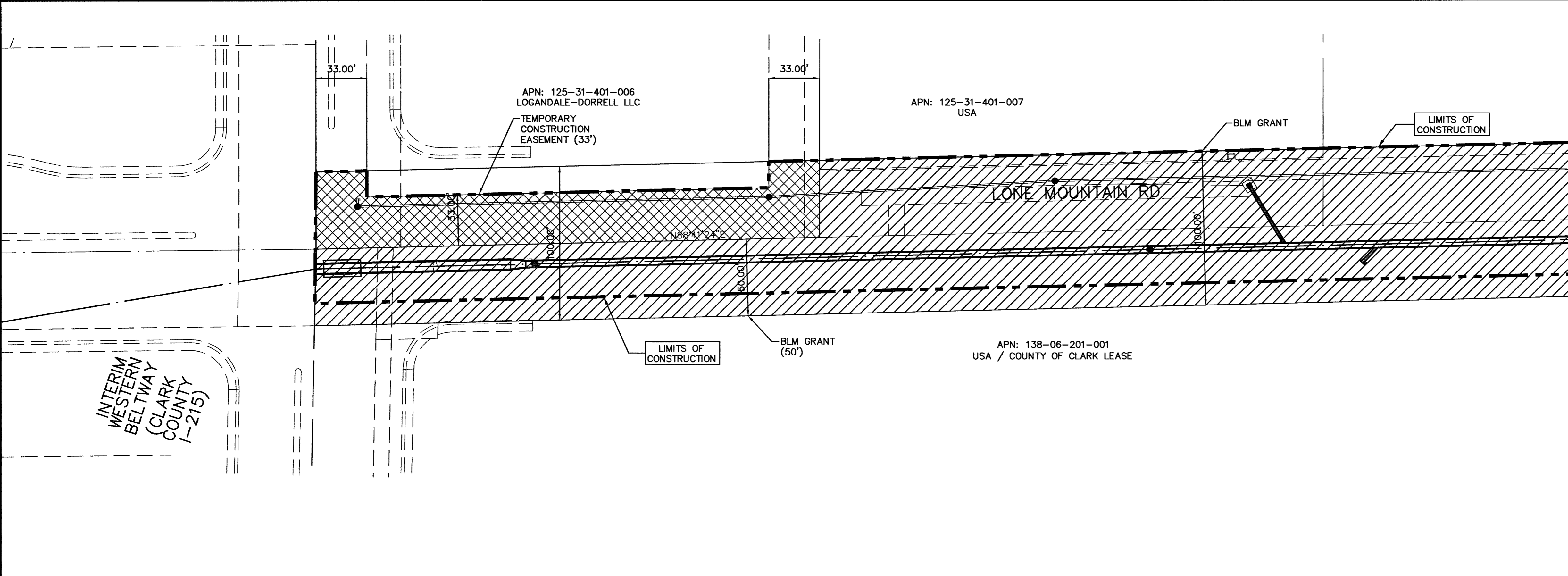
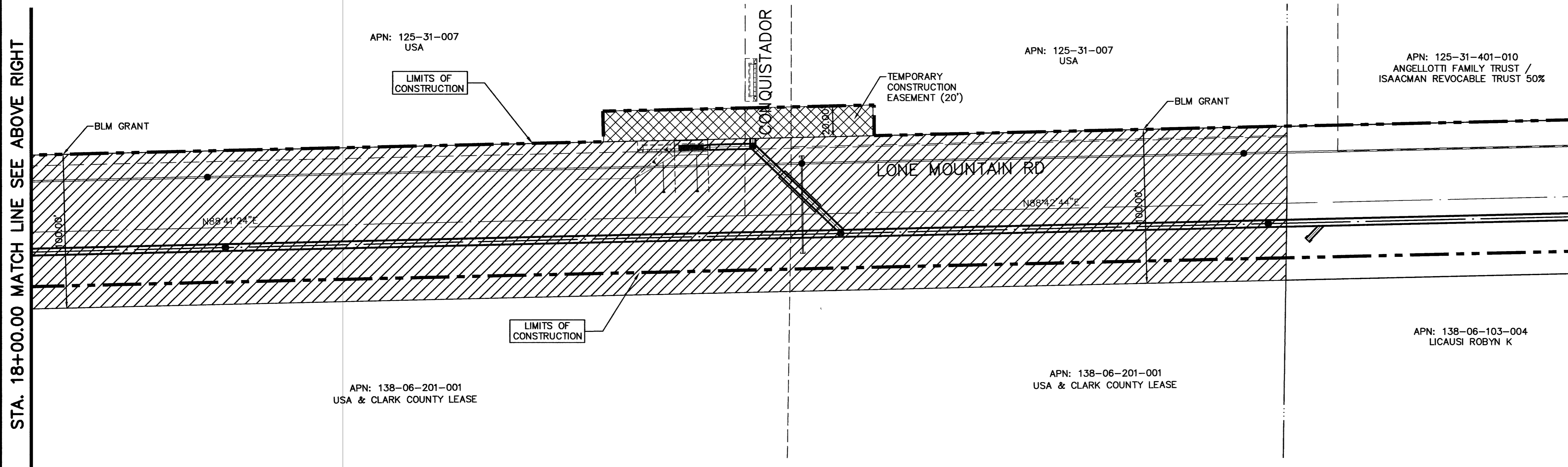


F:\412-627.dwg\improv\ignc_R01.dwg 03-22-07 08:23:30 D:\johnson

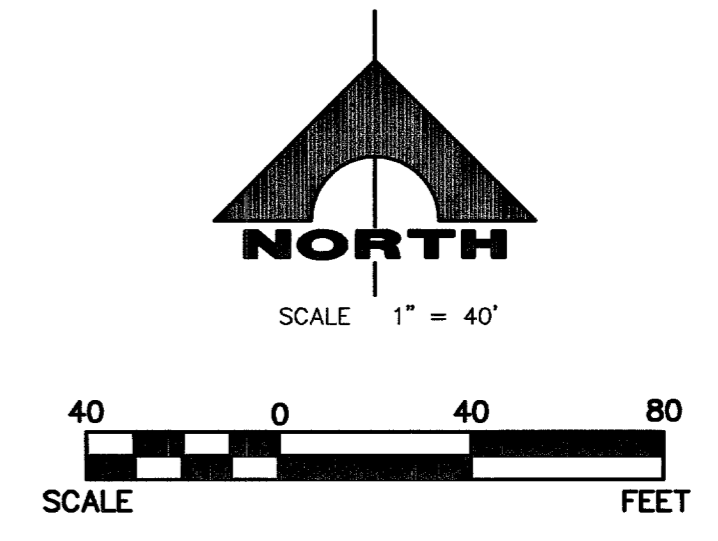
STA. 18+00.00 MATCH LINE SEE ABOVE RIGHT



STA. 18+00.00 MATCH LINE SEE BELOW LEFT



STA. 28+00.00 MATCH LINE SEE SHT. R-2



LEGEND

- BLM GRANT AMENDMENT
- PRIVATE PARCEL DECLARATION OF UTILIZATION
- TEMPORARY CONSTRUCTION EASEMENT
- TEMPORARY CONSTRUCTION EASEMENT
- LIMITS OF CONSTRUCTION
- CENTERLINE

 DEPARTMENT OF PUBLIC WORKS 600 EAST STEWART LAS VEGAS, NEVADA, NV 89101 (702) 229-6278	 G.C. WALLACE, INC. Engineers/Planners/Surveyors 1555 SOUTH RAINBOW BLVD., LAS VEGAS, NEVADA 89146 TELEPHONE: (702) 804-2000 • FAX: (702) 804-2299	RIGHT-OF-WAY PLAN STA. 8+00.00 TO STA. 28+00.00 GOWAN NORTH CHANNEL PHASE IV	SHEET R-1 9 OF 45 SHEETS DRAWING NO.	DRAWN BY: DVJ DESIGNED BY: CHL CHECKED BY: WEH PROJECT NO: 412.627 SCALE: 1" = 40' HORIZ 1" = 4' VERT		DATE: 3/22/07	REVISION BY: _____ DATE: _____

GOWAN NORTH CHANNEL - PHASE IV