

GENERAL STRUCTURAL NOTES

CONCRETE: ALL CONCRETE SHALL BE USING TYPE V CEMENT PER ASTM C-150. MODIFIED CLASS D (MAJOR) CONCRETE WITH 3/4" AGGREGATES SHALL HAVE A MINIMUM ULTIMATE COMPRESSIVE STRENGTH $f'_c=4500$ psi AT 28 DAYS AND A MAXIMUM WATER/CEMENT RATIO BY WEIGHT OF 0.45. WHERE SPECIFIED ON THE DRAWINGS, MODIFIED CLASS A (MAJOR) CONCRETE WITH 1 1/2" AGGREGATES SHALL HAVE A MINIMUM ULTIMATE COMPRESSIVE STRENGTH $f'_c=6000$ psi AT 28 DAYS AND A MAXIMUM WATER/CEMENT RATIO BY WEIGHT OF 0.40. ALL CONCRETE SHALL HAVE A 4"± SLUMP WITHOUT PLASTICIZERS AND 6"± SLUMP WHEN PLASTICIZERS ARE USED. ALL EXPOSED CORNERS SHALL BE BEVELED 3/4" UNLESS OTHERWISE NOTED.

AGGREGATE HARDNESS WILL BE CLOSELY MONITORED AND TESTED DURING CONSTRUCTION TO ENSURE THAT CLARK COUNTY STANDARD SPECIFICATIONS ARE MET.

CURING PROCESS OF BOTTOM SLAB SHALL REQUIRE CURING COMPOUND METHOD PER THE STANDARD SPECIFICATIONS (REFER TO SECTION 501.03.09).

REINFORCING STEEL: ALL REINFORCING STEEL SHALL BE ASTM A615, GRADE 60. DIMENSIONS RELATING TO BAR SPACING ARE CENTER TO CENTER. BENDING DIMENSIONS ARE FROM OUT TO OUT OF BARS. MINIMUM CLEARANCE TO REINFORCING STEEL SHALL BE 2" UNLESS OTHERWISE NOTED. HOOKS MAY BE ROTATED OR TILTED, AS NECESSARY, TO PROVIDE PROPER CLEARANCES.

STRUCTURAL STEEL: ALL WIDE FLANGE STEEL SHALL CONFORM TO ASTM A992 (FY = 50 KSI). ALL PIPE STEEL SHALL CONFORM TO ASTM A53, TYPE E OR S, GRADE B (FY = 35 KSI). ALL HOLLOW STRUCTURAL SECTIONS (HSS) SHALL CONFORM TO ASTM A500 GRADE B (FY = 46 KSI). ALL OTHER STANDARD STRUCTURAL STEEL SHAPES, ROLLED SECTIONS, BARS, AND PLATES SHALL CONFORM TO ASTM A36 (FY = 36 KSI).

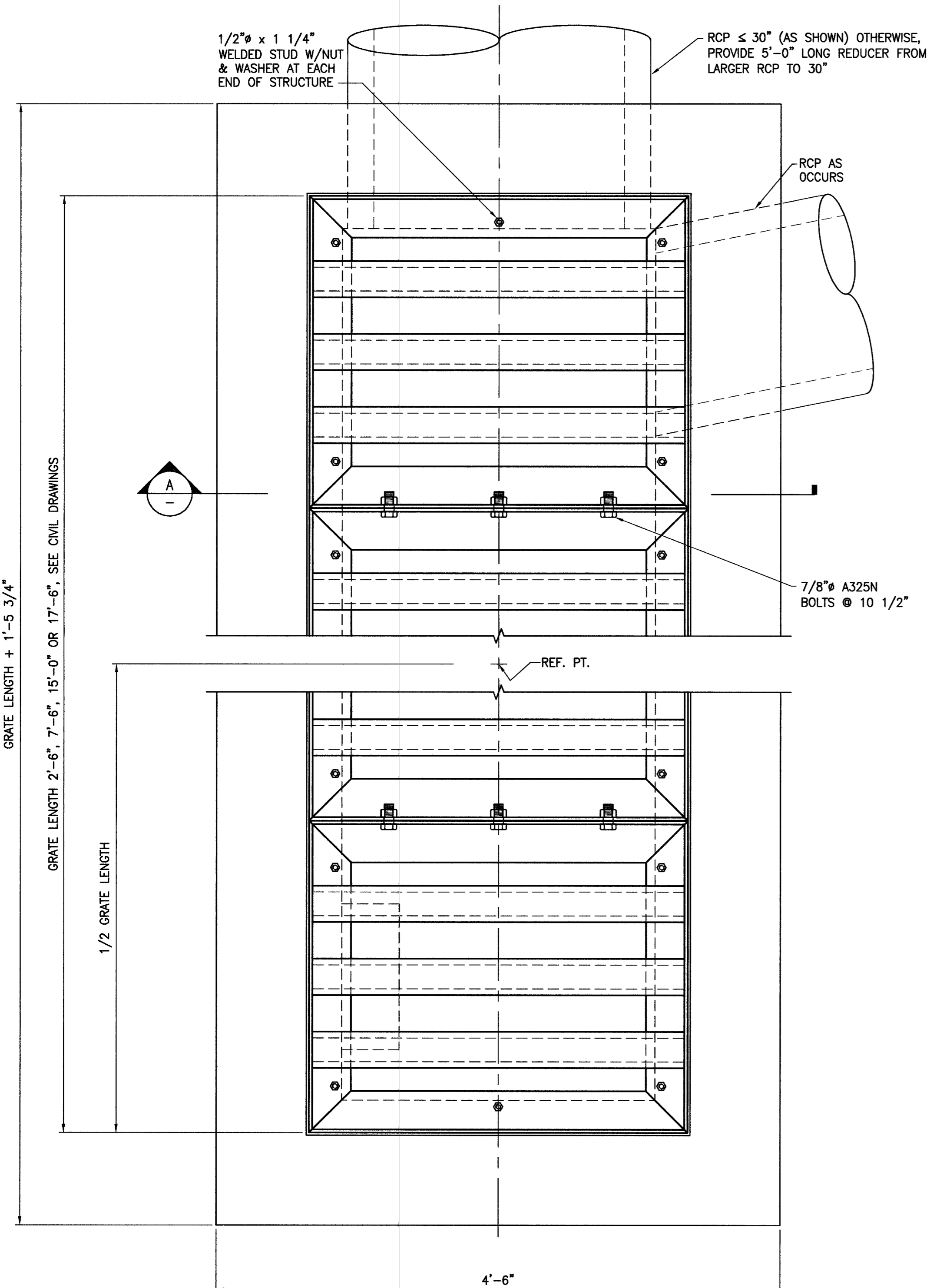
WELDING: WELDING SHALL BE BY WELDERS HOLDING CURRENT VALID CERTIFICATES AND HAVING EXPERIENCE IN THE TYPE OF WELDS SHOWN ON THE DRAWINGS AND NOTES. ALL WELDS SHALL HAVE A MINIMUM TENSILE STRENGTH OF 70 KSI UNLESS NOTED OTHERWISE. ALL WELDING SHALL BE PER THE LATEST AMERICAN WELDING SOCIETY STANDARDS. ALL WELDS ON DRAWINGS ARE SHOWN AS SHOP WELDS. CONTRACTOR MAY SHOP WELD OR FIELD WELD AT HIS DISCRETION.

BEDDING MATERIAL: BEDDING MATERIAL SHALL BE 6" OF CLARK COUNTY TYPE II AGGREGATE. THE BEDDING LAYER SHALL BE COMPACTED TO AT LEAST 95 PERCENT OF THE MAXIMUM DRY DENSITY AS ESTABLISHED BY ASTM TEST METHOD D-1557.

EXISTING UTILITIES: THE CONTRACTOR SHALL BE RESPONSIBLE FOR LOCATING ALL EXISTING UTILITIES WITHIN THE WORK AREA, AND PROVIDING PROTECTION FOR THE VARIOUS UTILITIES AFFECTED, BEFORE PROCEEDING WITH THE WORK.

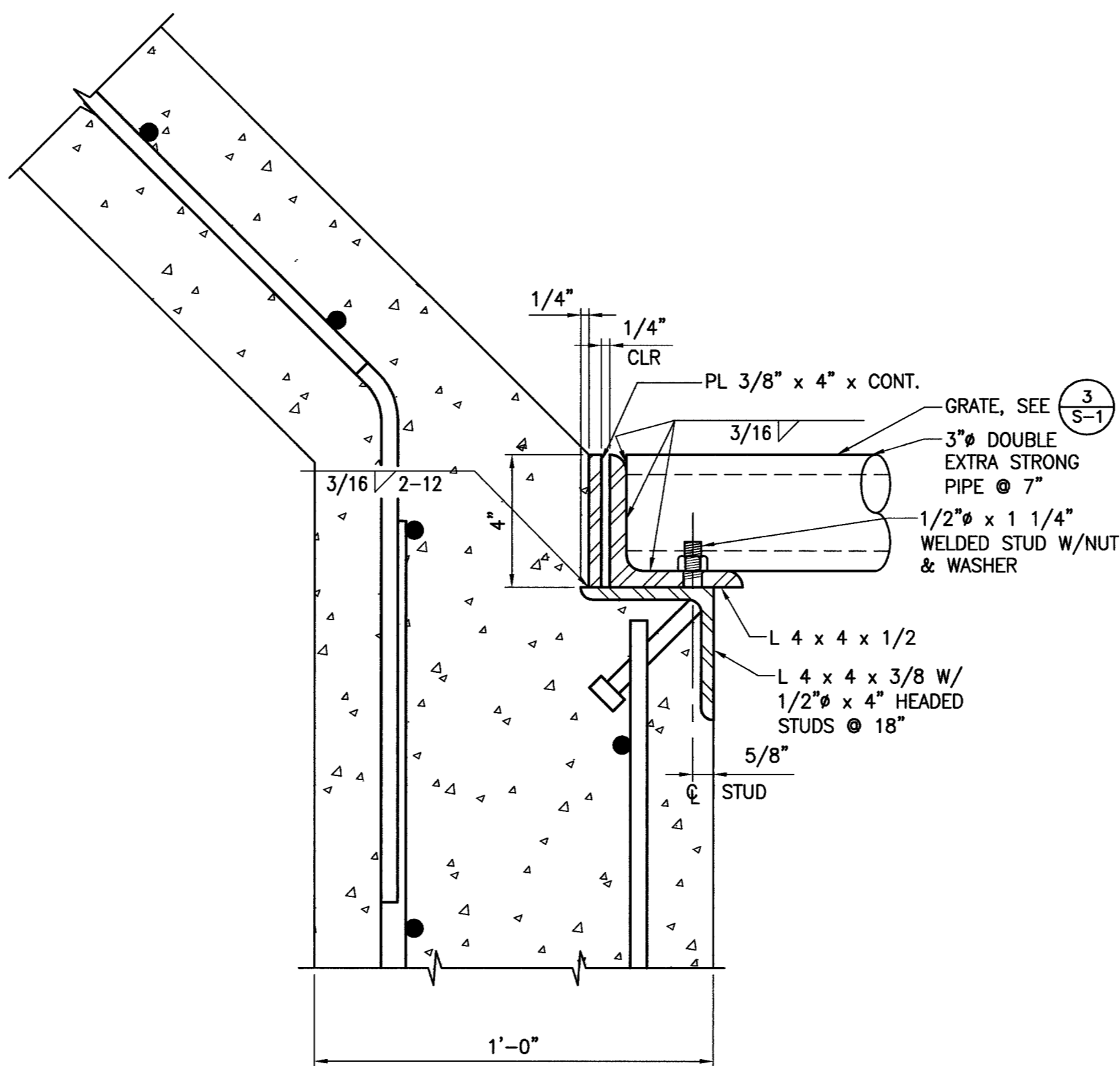
GALVANIZING: ALL EXPOSED METAL PARTS SHALL BE HOT-DIP GALVANIZED AFTER FABRICATION AND ALL GALVANIZING DAMAGED BY FABRICATION OR INSTALLATION SHALL RECEIVE TWO COATS OF ALUMINUM PAINT (GALVONOX OR EQUAL).

EPOXY: SIMPSON STRONG-TIE SET ADHESIVE (ICBO ER-5279). INSTALL PER THE ICBO EVALUATION REPORT AND THE MANUFACTURER'S WRITTEN INSTRUCTIONS.



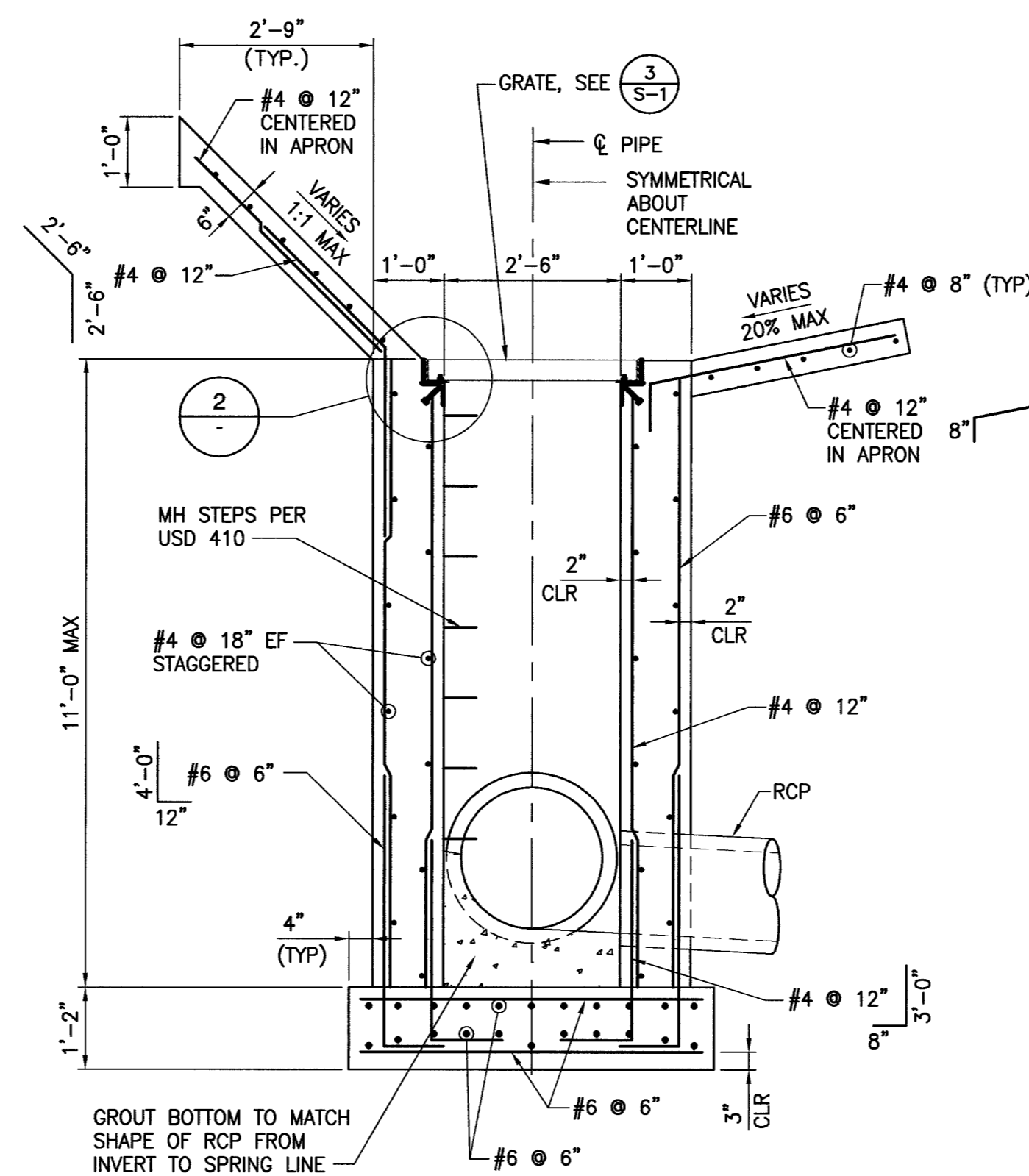
DROP INLET PLAN

1 1/2" = 1'-0"



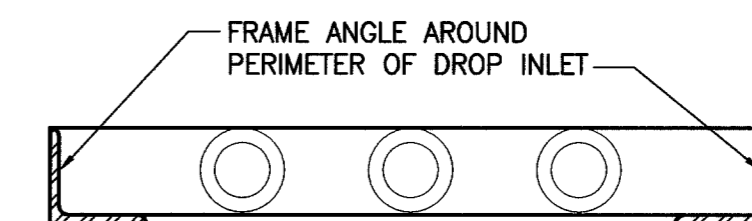
DETAIL

3" = 1'-0"



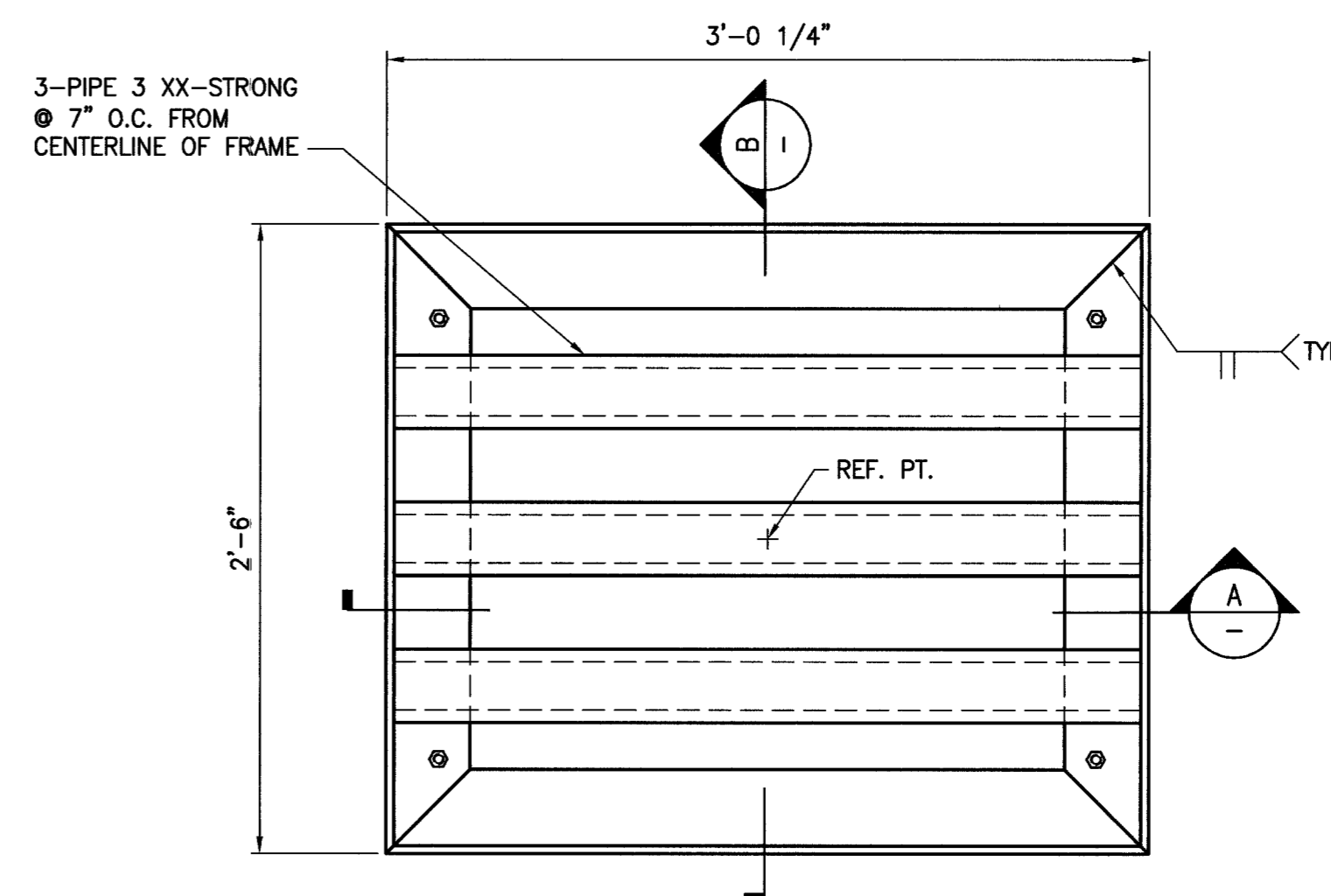
DROP INLET SECTION

1/2" = 1'-0"



TYPICAL GRATE SECTION

1 1/2" = 1'-0"



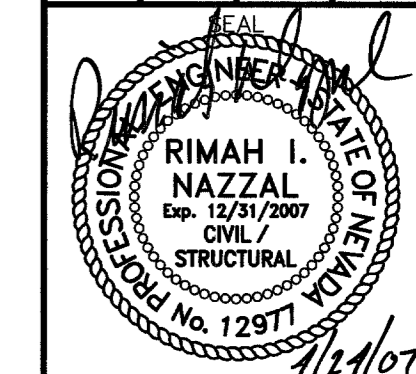
TYPICAL GRATE PLAN

1 1/2" = 1'-0"

SHEET		GENERAL STRUCT. NOTES		DEPARTMENT OF PUBLIC WORKS	
DRAWN BY:		DROP INLETS AND GRATES		400 STEWART AVENUE	
DESIGNED BY:		SECTIONS AND DETAILS		LAS VEGAS NEVADA, NV 89101	
CHECKED BY:		GOWAN NORTH CHANNEL		(702) 228-8276	
PROJECT NO:		PHASE IV		G.C. WALLACE, INC.	
SCALE:				Engineers/Planners/Surveyors	
AS SHOWN/HORIZ				1555 SOUTH RAINBOW BLVD./LAS VEGAS, NEVADA 89146	
AS SHOWN/VERT				TELEPHONE: (702) 804-2000 • FAX: (702) 804-2399	
REVISION				BY	
				DATE	
				REV	
				DATE	

101705

GOWAN NORTH CHANNEL - PHASE IV



SHEET
S-1
36 OF 45 SHEETS
DRAWING NO.
731-65C