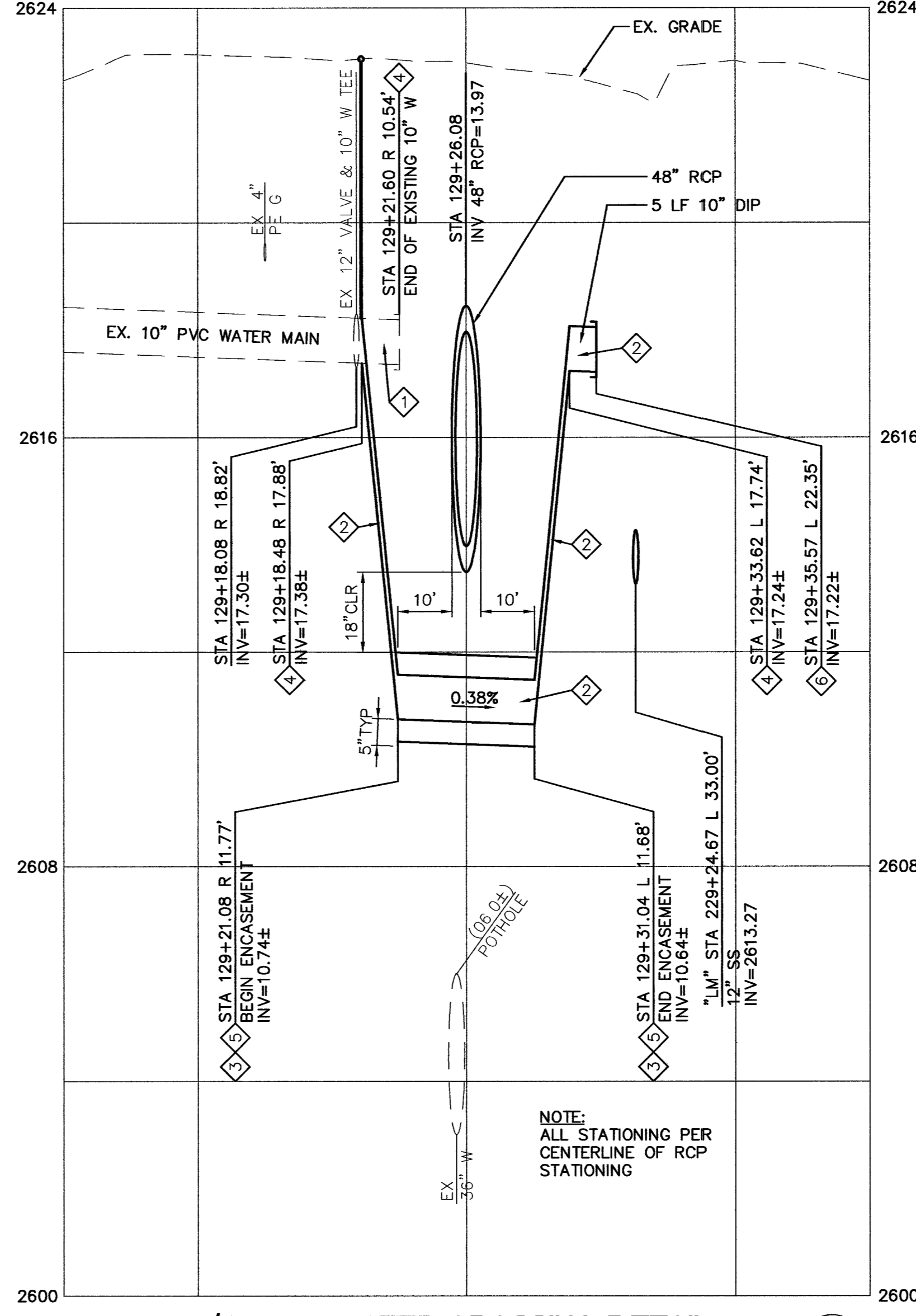
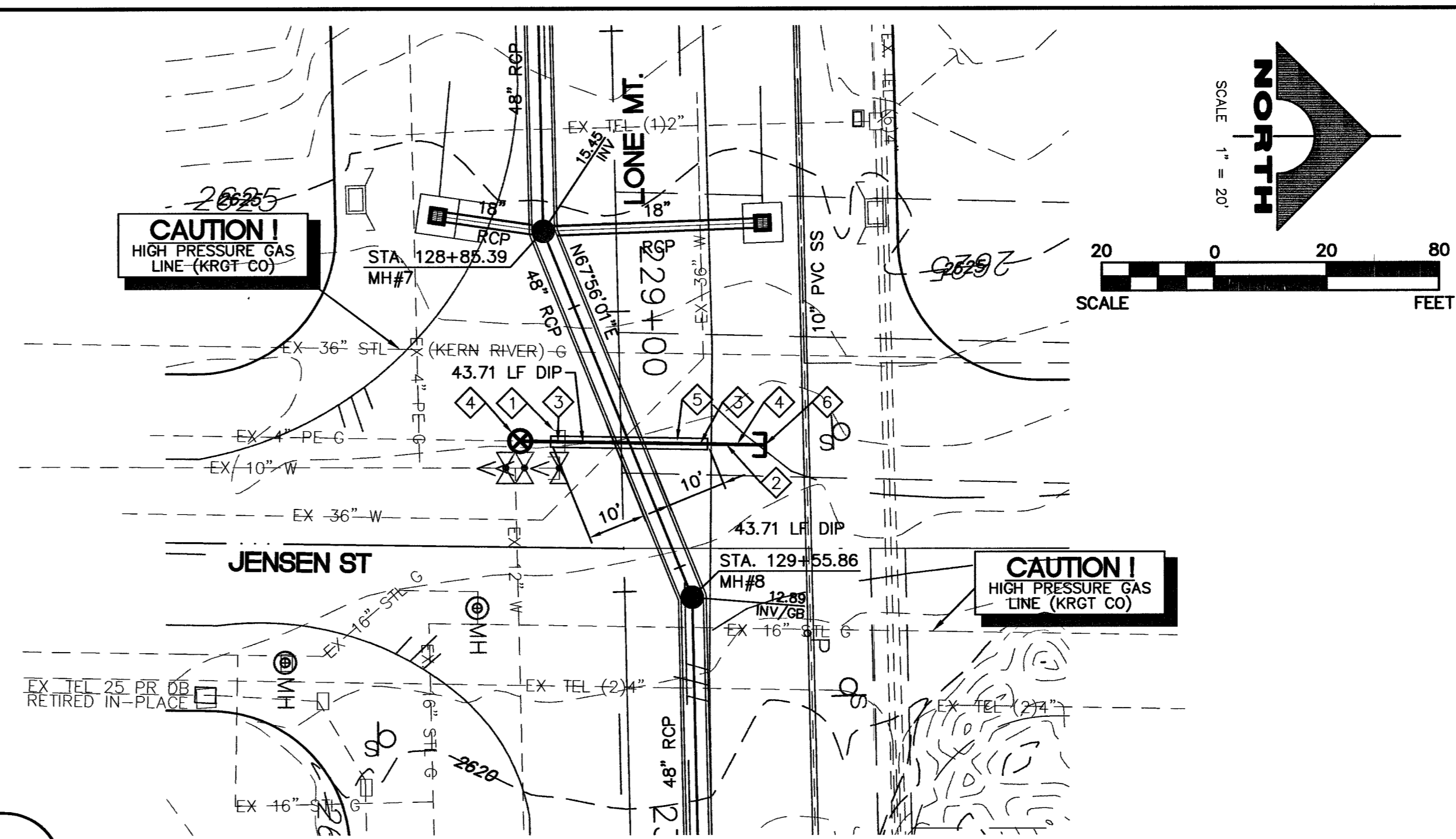
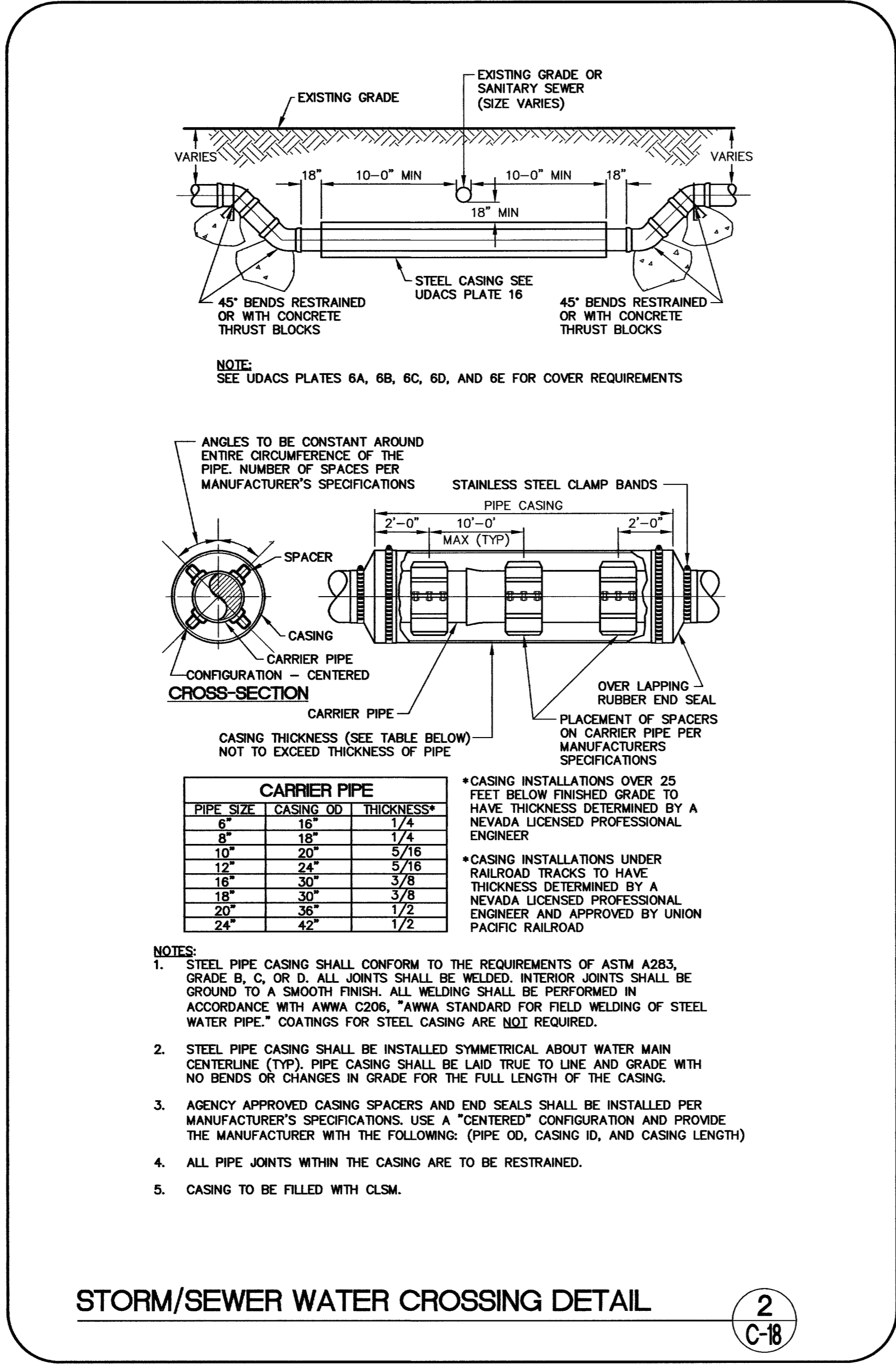


F:\142-627\dwg\improv\grc_c18.dwg 03-22-07 08:22:46 D Johnson

101704



- WATER CONSTRUCTION NOTES**
- 1 REMOVE EXISTING 10" WATER LINE AND THRUST BLOCKS
 - 2 10" DIP CLASS 350 (43.71 LF)
 - 3 10" 45° BEND
 - 4 10" 45° BEND DOWN
 - 5 PIPE ENCASEMENT (SEE DETAIL C-18)
 - 6 PLUG OR CAP WITH THRUST BLOCK PER UDS PLATE No. 5

Note:
Call Southwest Gas at 365-2296 for Standby when excavating over or near High Pressure Gas lines.

Note:
Call Kern River Gas at 639-3600 for Standby when excavating over or near High Pressure Gas lines.

DISCLAIMER NOTE

UTILITY LOCATIONS SHOWN HEREON ARE APPROXIMATE ONLY. IT SHALL BE THE CONTRACTOR'S RESPONSIBILITY TO DETERMINE THE EXACT HORIZONTAL AND VERTICAL LOCATION OF ALL EXISTING UNDERGROUND AND OVERHEAD UTILITIES PRIOR TO COMMENCING CONSTRUCTION. NO REPRESENTATION IS MADE THAT ALL EXISTING UTILITIES ARE SHOWN HEREON. THE ENGINEER ASSUMES NO RESPONSIBILITY FOR UTILITIES NOT SHOWN OR UTILITIES NOT SHOWN IN THEIR PROPER LOCATION.

Avoid cutting underground utility lines. It's costly.

Call before you Dig.
1-800-227-2600
UNDERGROUND SERVICE (USA)

Avoid hitting overhead power lines. It's costly.

CALL BEFORE YOU DO OVERHEAD

1-702-227-2929

William E. Hunter III
3-23-07
LAS VEGAS VALLEY WATER DISTRICT DATE

DEPARTMENT OF PUBLIC WORKS
400 STEWART AVENUE
LAS VEGAS, NEVADA, NV 89101
(702) 228-8278

G.C. WALLACE, INC.
Engineers/Planners/Surveyors
1555 SOUTH RAINBOW BLVD., LAS VEGAS, NEVADA 89146
TELEPHONE: (702) 804-2000 • FAX: (702) 804-2299

PLAN & PROFILE
10" WATER RELOCATION
AT STA. 129+26.08
GOWAN NORTH CHANNEL
PHASE IV

SHEET
DRAWN BY: DVJ
DESIGNED BY: CAL
CHECKED BY: WEH
PROJECT NO: 412.627
SCALE: 1" = 20' HORIZ
1" = 2' VERT

3/22/07

SHEET
C-18
35 OF 45 SHEETS
DRAWING NO.
731-65C

REV DATE BY
REVISION
GOWAN NORTH CHANNEL - PHASE IV