

Call before you Dig  
1-800-227-2600  
Nevada Power Equipment and Safety Services Department

Call before you Overhead  
1-702-593-6111  
Nevada Power Equipment and Safety Services Department

NOTES:  
A. ROADWAY STATIONING USED THROUGHOUT EXCEPT GOWAN CHANNEL STATIONING.

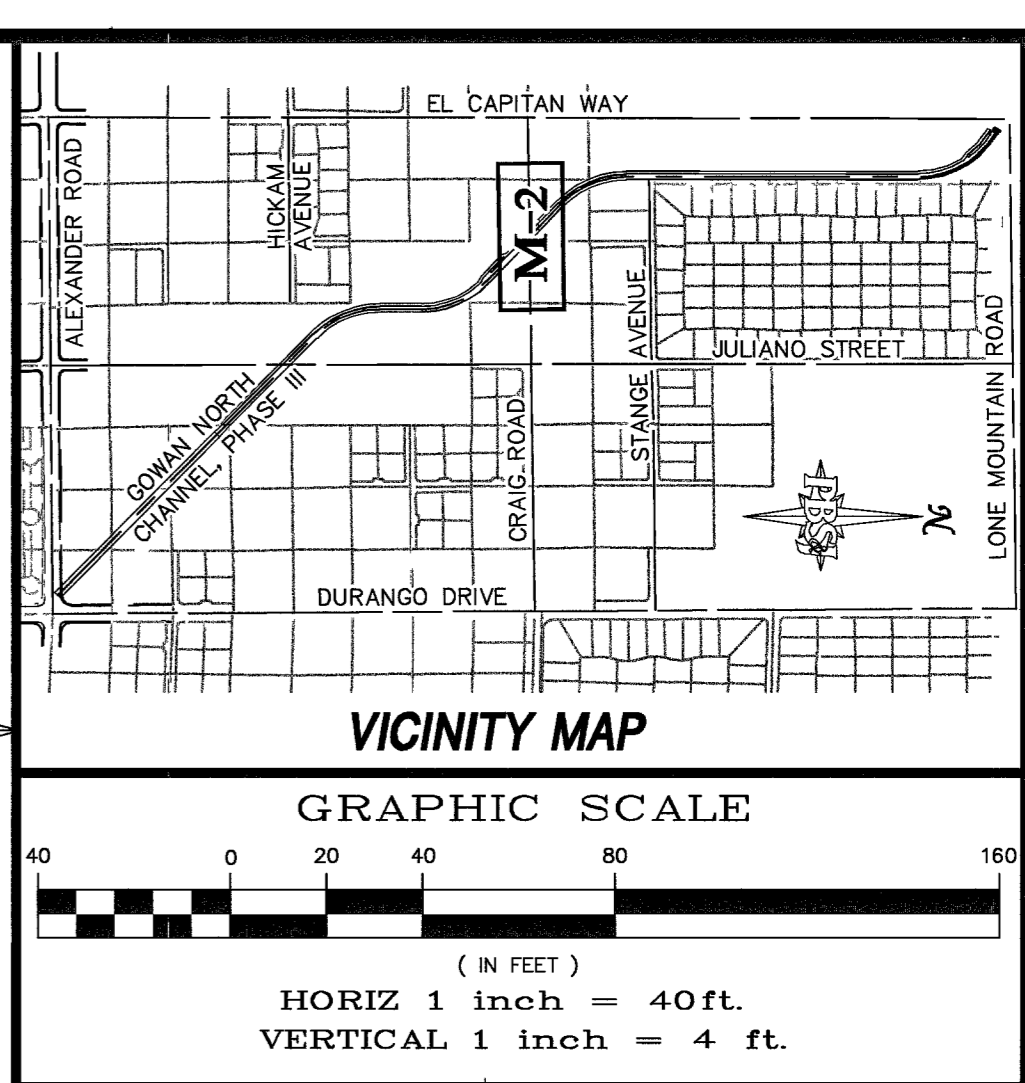
REFER TO DRAWING C19 FOR 8'x5' RCB PLAN AND PROFILE

TABLE 1 SWALE			TABLE 2 ACCESS ROAD		
#	STATION	OFFSET	#	STATION	OFFSET
S1	14+00	22.4' RT	A1	15+46.10	50.00' RT.
S2	14+50	31.1' RT.	A2	15+92.07	64.14' RT.
S3	15+00	39.8' RT.	A3	16+39.86	78.85' RT.
			A4	16+88.03	93.56' RT.
			A5	17+22.71	104.34' RT.

CURVE TABLE	
C1	
RADIUS	60.00'
BEGIN	17+23.09 104.34' RT
END	17+47.32 118.99' RT

NOTE: CONTRACTOR TO POTHOLE UTILITIES (NPCs, SPRINT, SWG, COX, WATER, AND SEWER) A MINIMUM OF 10 WORKING DAYS PRIOR TO CONSTRUCTION OF THE NEW DROP INLETS AND STORM DRAINS, CONTRACTOR WILL BE SOLELY RESPONSIBLE FOR RESOLUTION OF ANY UTILITY CONFLICTS.



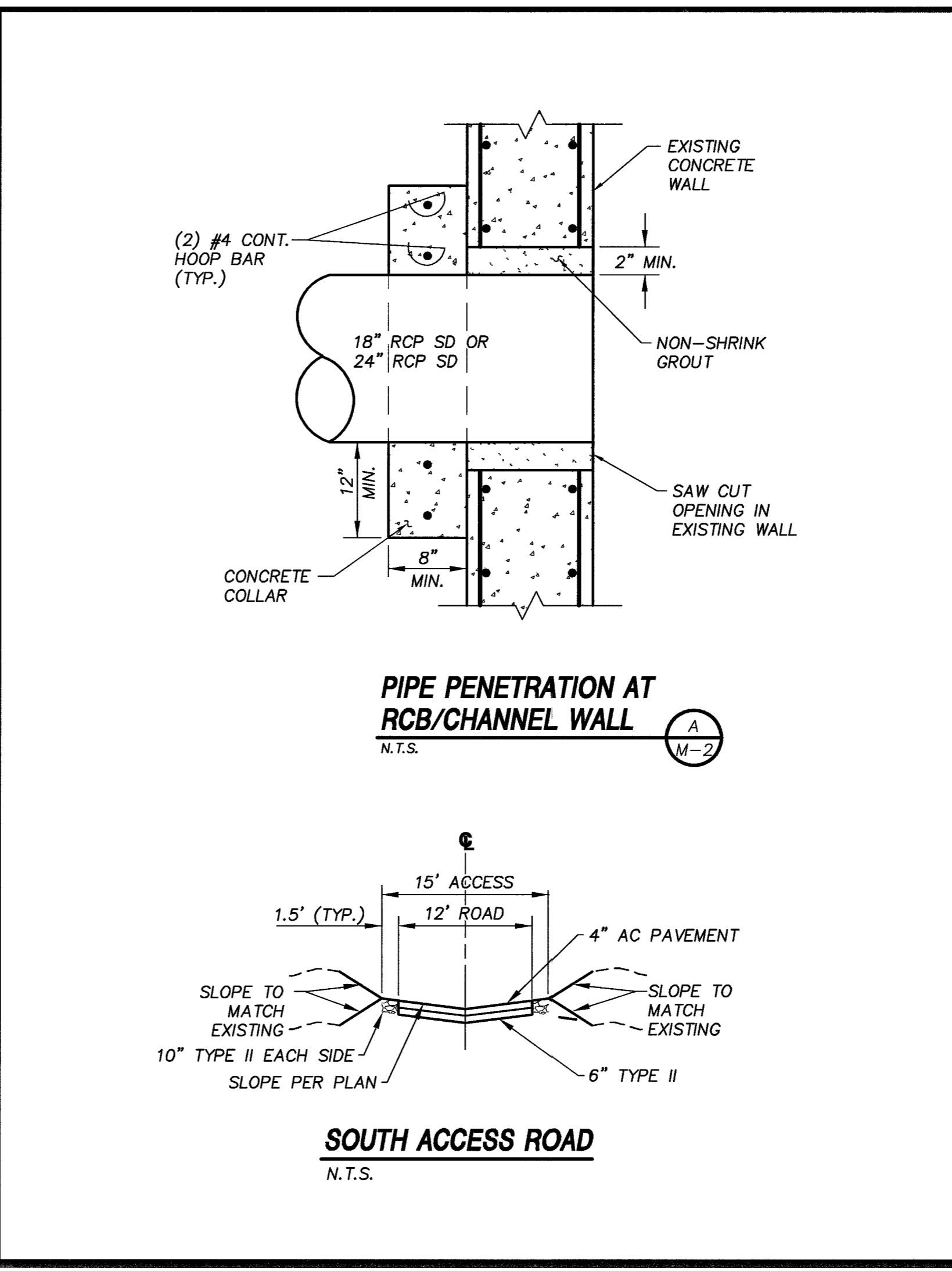
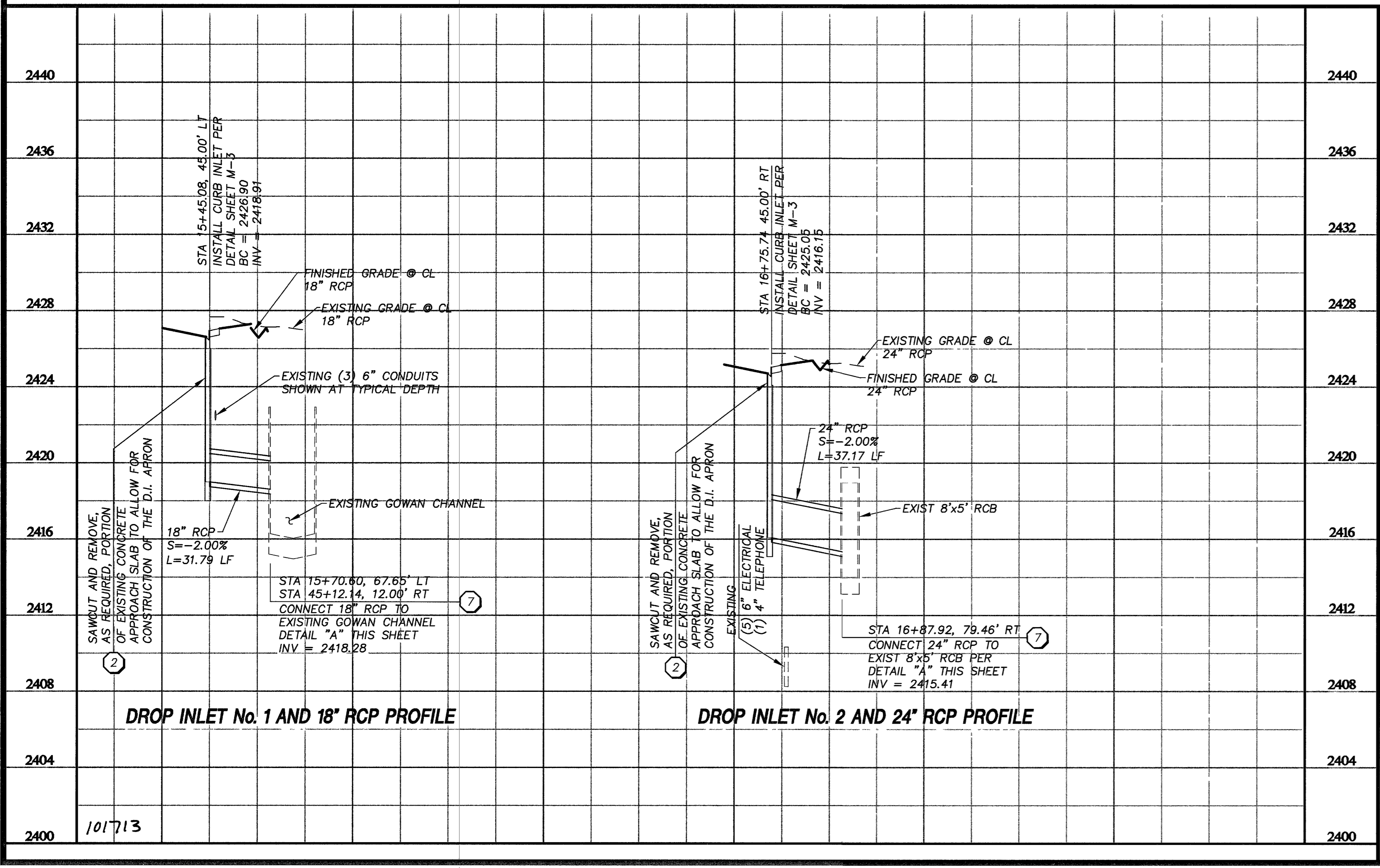
**GRAPHIC SCALE**  
(IN FEET)  
HORIZ 1 inch = 40ft.  
VERTICAL 1 inch = 4 ft.

**BASIS OF BEARING**  
THE BASIS OF BEARING FOR THE SURVEY SHOWN HEREON IS GRID NORTH AS DEFINED BY THE NEVADA COORDINATE SYSTEM OF 1983 (NCS83) EAST ZONE (2701) - REF CLV DRAWING NO. 731-65B, SHEET C-4.

**BENCHMARK**  
CITY OF LAS VEGAS BENCHMARK NO. 1LV00 3W4 - RIVET AND PLATE IN ELECTRIC BASE, 250' EAST OF BUFFALO DRIVE ON SOUTH SIDE OF CRAIG ROAD.  
NAVD 1988  
DATUM ELEVATION = 14.7310 METERS 2345.01 FEET

**CAUTION:**  
EXISTING UTILITIES ARE LOCATED ON THE PLANS FROM A SEARCH OF AVAILABLE RECORDS. CONTRACTOR TO VERIFY LOCATIONS AND DEPTHS PRIOR TO CONSTRUCTION.

**SURVEYOR NOTE:**  
HORIZONTAL CONTROL PLANS FOR WORK SHOWN ON SHEETS M-1, M-2 & M-3 CAN BE FOUND ON CLV REF DRAWING NO. 731-65B SHEET C-4.



- KEY NOTES**
- CONSTRUCTION ITEMS:** (THIS SHEET ONLY)
- RELOCATE EXISTING PORTABLE CONCRETE BARRIER RAILS (6 EA.) TO A LOCATION DIRECTED BY ENGINEER. INSTALL NEW CONCRETE BARRIER RAILS (14 EA.) AS SHOWN ON THIS DRAWING OR AS DIRECTED BY THE ENGINEER.
  - SAWCUT TO CLEAN EDGE, MATCH EXISTING SURFACE.
  - CONSTRUCT SOUTH ACCESS ROAD PER DETAIL THIS SHEET AND TABLE 2.
  - INSTALL 18" CLASS III RCP PER DETAIL THIS SHEET AND DETAIL "C" SHEET M-1.
  - INSTALL 24" CLASS III RCP PER DETAIL THIS SHEET AND DETAIL "C" SHEET M-1.
  - INSTALL DROP INLET PER DETAILS ON SHEET M-3.
  - CONNECT RCP TO EXISTING RCB OR CHANNEL PER DETAIL "A" THIS SHEET.
  - CONSTRUCT SWALE, GRADE TO NEW CURB FLOWLINE. GRADE FROM EDGE OF PAVEMENT TO FLOWLINE AND FROM FLOWLINE AT 5:1 SLOPE. SEE TABLE 1.
  - SAWCUT EXISTING CONCRETE SIDEWALK TO NEAREST CONSTRUCTION JOINT. INSTALL CONCRETE TO MATCH SIDEWALK SURFACE.
  - CONSTRUCT DRIVEWAY PER USD #224 OPTION "A", L=16'.
  - CONSTRUCT DRIVEWAY PER USD #224 OPTION "A", L=40'.
  - CONSTRUCT SIDEWALK PER USD #234.
  - CONSTRUCT "L" TYPE CURB AND GUTTER PER USD #216.
  - NEW ASPHALT PAVEMENT TO MATCH EXISTING.
  - FIELD FIT TO EXISTING, MATCH EXISTING ELEVATION AT GATE.
  - REPLACE EXISTING SSMH RING & COVER WITH WATERTIGHT RING & COVER.

Professional Engineer Seal for Wayne Horlacher, No. 08830, dated 11/17/06.

FOR REVISION #1 ONLY

DEPARTMENT OF PUBLIC WORKS  
ENGINEERING DESIGN SECTION

CITY ENGINEER: CHARLES KAJKOWSKI JR., P.E.  
CITY PROJECT MANAGER: MARVIN STINE, P.E.  
DESIGN BY: NK  
PROJECT MANAGER: ALI ZENHARI, P.E.  
CHECK BY: AZ  
DATE: MARCH, 2006  
DRAWN BY: DJ

CITY OF LAS VEGAS

CRAIG ROAD  
ACCESS ROAD, SWALE,  
AND STORM DRAIN

GOWAN NORTH CHANNEL  
PHASE IV

SHEET: M-2  
DRAWING: 731-65C  
36 OF 37

I:\projects\1510018 As-Builts\10-25-05\10-Craig\m2-035.dwg Nov 17, 2006 - 8:46am