

Call before you Dig
 1-800-227-2600
 Nevada Power, Environment and Safety Services Department

Call before you Overhead
 1-702-593-6111
 Nevada Power, Environment and Safety Services Department

POINT TABLE

NO.	NORTHING	EASTING	NO.	NORTHING	EASTING
P1	792341.6990	744669.2800	P25	796329.0433	746013.8069
P2	792353.0483	746038.2911	P26	796310.5894	744661.7124
P3	795005.6049	746023.3610	P27	796291.3779	743307.7055
P4	797656.8702	746008.4849	P28	796974.5044	744660.5007
P5	797638.4194	744659.2889	P29	796965.1033	743984.7399
P6	797620.0266	743310.2530	P30	796955.7022	743308.9792
P7	794968.2062	743305.9011	P31	797629.2370	743984.7714
P8	792336.3784	744013.2321	P32	797624.6310	743647.4524
P9	792662.9606	744002.8705	P33	795304.2062	743645.5958
P10	792330.6057	743301.4642	P34	795635.0291	743645.9039
*P11	792380.9863	745936.1599	P35	795634.3109	743628.4423
P12	793796.2192	744504.5629	P36	792633.0740	745681.6206
P13	793650.1886	743303.4506	P37	792555.4208	743388.3098
P14	794385.0302	744355.5956	P38	797558.7438	743397.1954
P15	794744.1953	744202.0534	P39	797569.7301	743379.0523
P16	795160.9281	743767.0589	P40	797679.0570	743316.4024
P17	795486.1145	743628.3631	P41	797597.6275	743301.6275
P18	797116.5958	743629.6339	P42	797597.6275	743301.6275
P19	792667.2835	745644.4777	P43	797633.5455	743168.7207
P20	793680.1048	746030.7385	P44	792365.1480	745683.9626
P21	793672.5582	745348.7135	P45	797955.3374	743305.3908
P22	793663.1157	744666.5194	P46	793931.8726	744375.3732
P23	794152.2111	744355.8593	P47	797633.3366	743153.4263
P24	794987.2281	744663.6888	P48	792704.3481	743316.0326
			P49	796295.9348	743628.8770

LINE DATA

LINE	BEARING	DISTANCE
L1	S58°48'13"E	101.70'
L2	S89°13'04"W	15.30'
L3	S58°48'13"E	21.21'
L4	N00°49'35"W	25.29'
L5	S47°21'15"E	50.50'
L6	S00°01'50"W	148.20'
L7	S00°03'04"W	156.43'

CURVE DATA

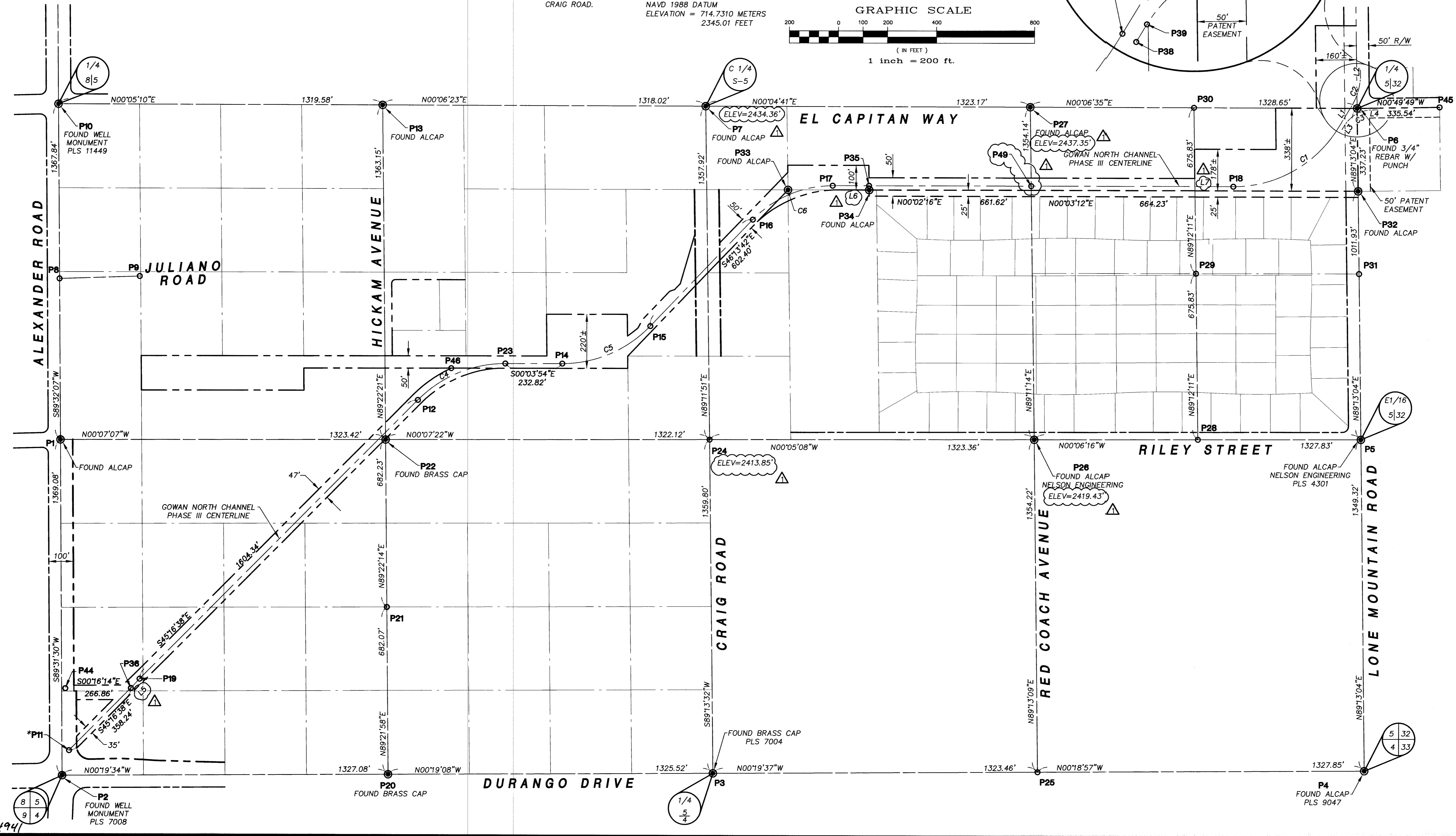
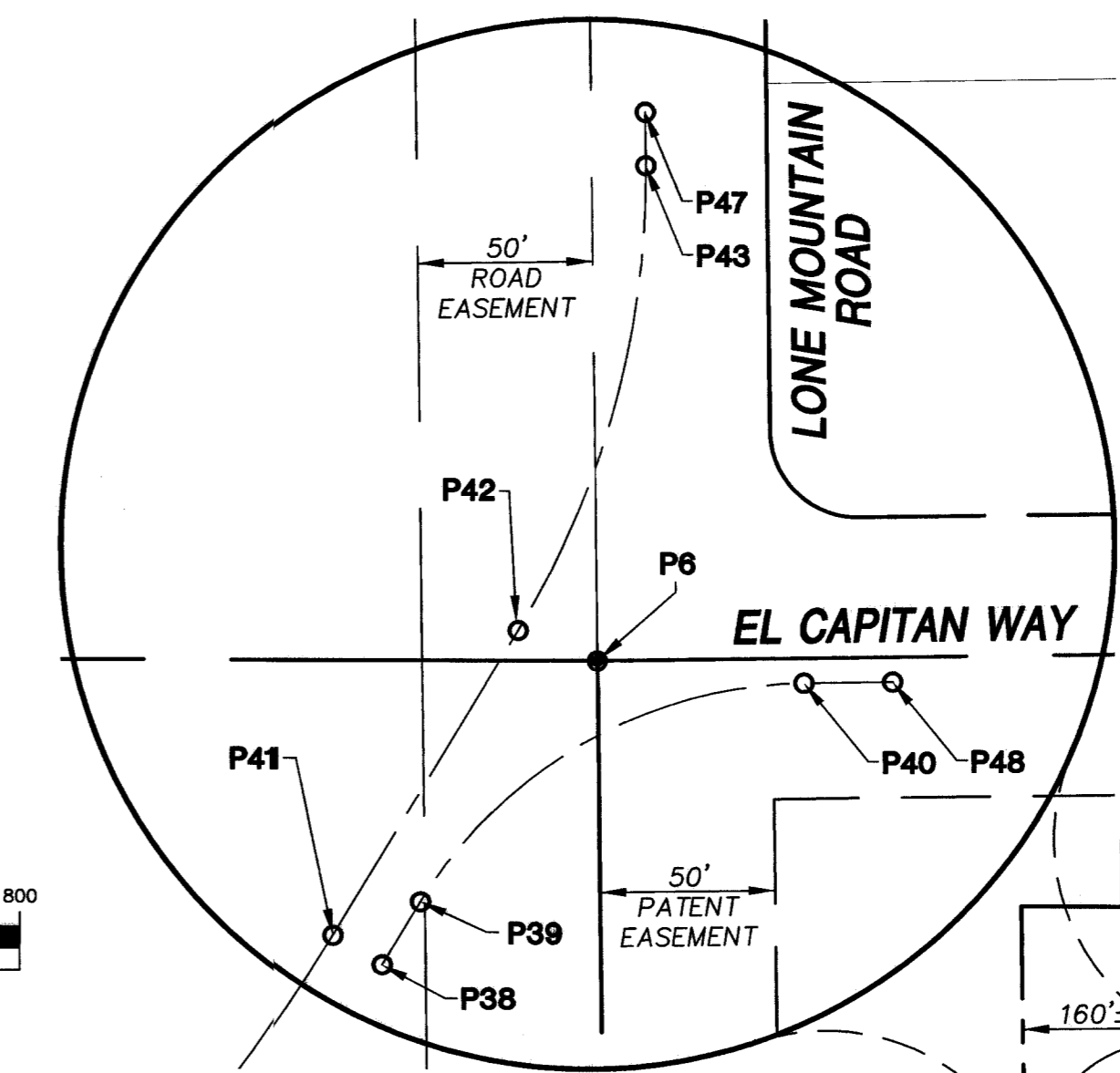
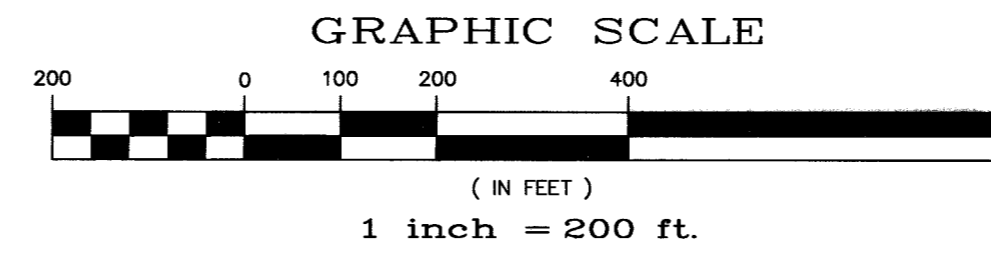
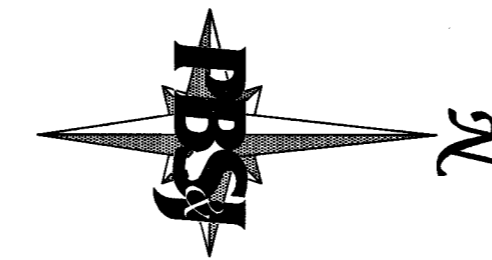
CURVE	RADIUS	DELTA	LENGTH	TANGENT
C1	500.00'	58°51'17"	513.60'	282.05'
C2	250.00'	31°58'43"	139.53'	71.64'
C3	130.00'	57°58'38"	131.55'	72.03'
C4	501.83'	45°12'44"	396.00'	208.96'
C5	498.17'	46°09'48"	401.38'	212.30'
C6	450.00'	46°15'32"	363.32'	192.21'

BASIS OF BEARING

THE BASIS OF BEARING FOR THE SURVEY SHOWN HEREON IS GRID NORTH AS DEFINED BY THE NEVADA COORDINATE SYSTEM OF 1983 (NCS83) EAST ZONE (2701)

BENCHMARK

CITY OF LAS VEGAS BENCHMARK NO. 1LV00 3W4 - RIVET AND PLATE IN ELECTRIC BASE, 250' EAST OF BUFFALO DRIVE ON SOUTH SIDE OF CRAIG ROAD.
 NAVD 1988 DATUM
 ELEVATION = 714.7310 METERS
 2345.01 FEET



DEPARTMENT OF PUBLIC WORKS
 ENGINEERING DESIGN SECTION

CITY ENGINEER: CHARLES KAJKOWSKI JR., P.E.
 CITY PROJECT ENGINEER: MARVIN STINE, P.E.
 PROJECT MANAGER: ALI ZENHARI, P.E.
 DESIGN BY: PC
 DRAWN BY: LSB/TH

CHECK BY: TH
 DATE: DEC. 12, 2003

GOWAN NORTH CHANNEL
 PHASE III

SURVEY CONTROL PLAN

TITLE: SHEET:

PROFESSIONAL LAND SURVEYOR STATE OF NEVADA
 TYRONE L. HICKS
 No. 12063

SHEET: **C4**
 4 OF 42

DRAWING: 731-65B

D:\pwws\51007018_3004-018.DWG Jun 11, 2004 11:46am

RELOT