

Avoid cutting underground utility lines. It's costly.
Call before you Dig
 1-800-227-2600



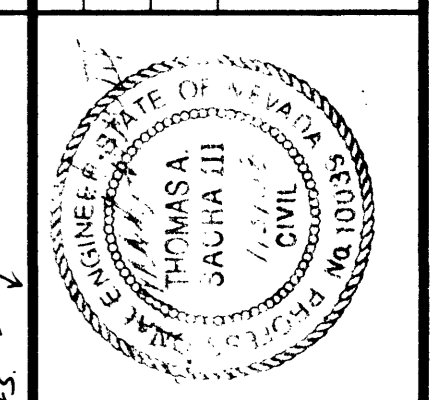
WATSON ENGINEERING
 CONSULTING ENGINEERS
 2450 WEST POPPY AVENUE
 TUCSON, ARIZONA 85705
 PH: (520) 888-6468
 FAX: (520) 292-6974

NOTE: These drawings and the information contained herein are the property of CON-ARCH. No part of these drawings or information may be reproduced, stored in a retrieval system, or transmitted in any form or by any means, electronic, mechanical, photocopying, recording, or by any information storage and retrieval system, without the prior written permission of CON-ARCH. The unauthorized use of these drawings is strictly prohibited.

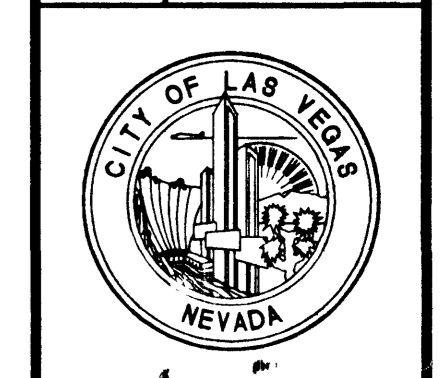
GOWAN NORTH CHANNEL	
DESIGNED BY:	TAS
CHECKED BY:	TAS
DATE:	6/6/98
DRAWN BY:	ATS
JOB NO.:	98047

REVISIONS			
NO.	DATE	DESCRIPTION	APPROVED

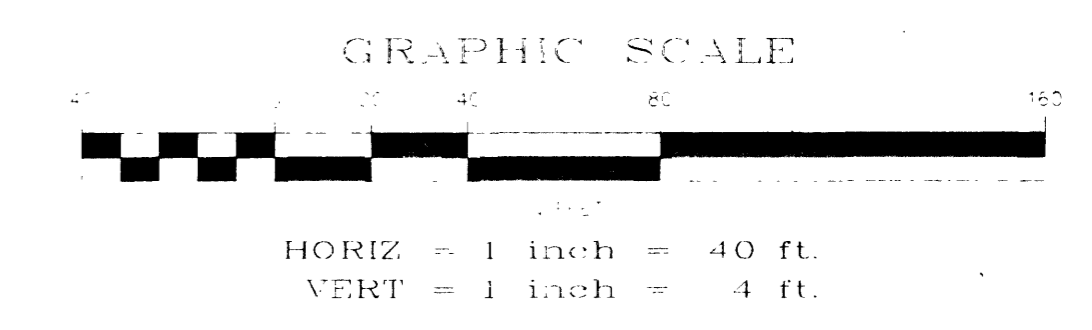
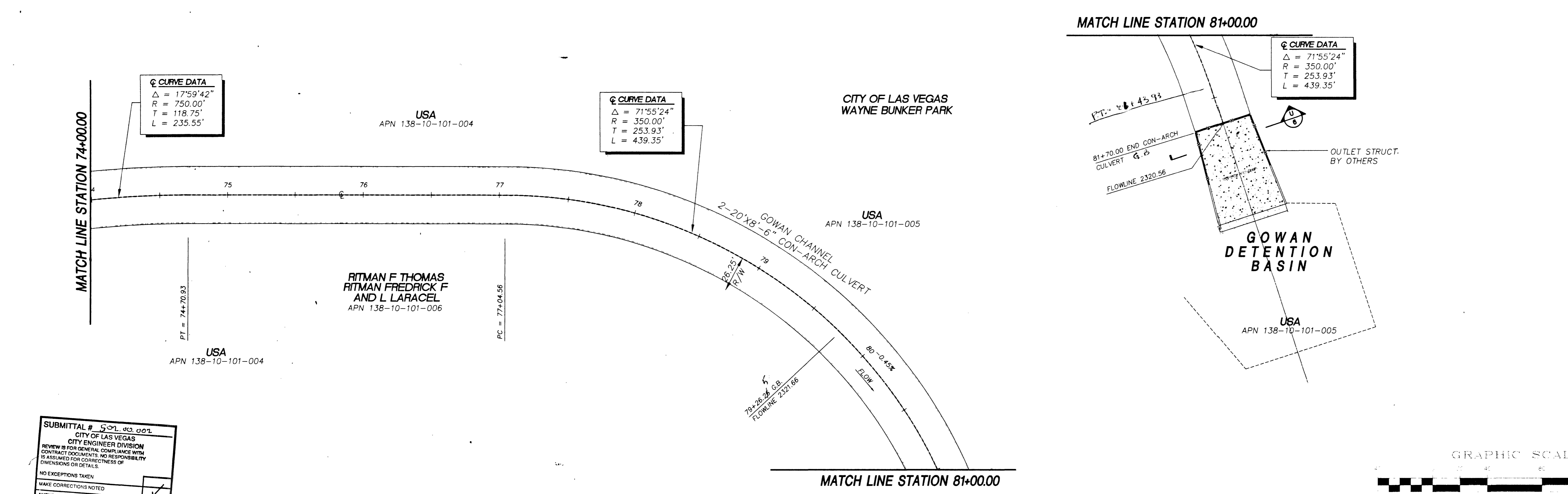
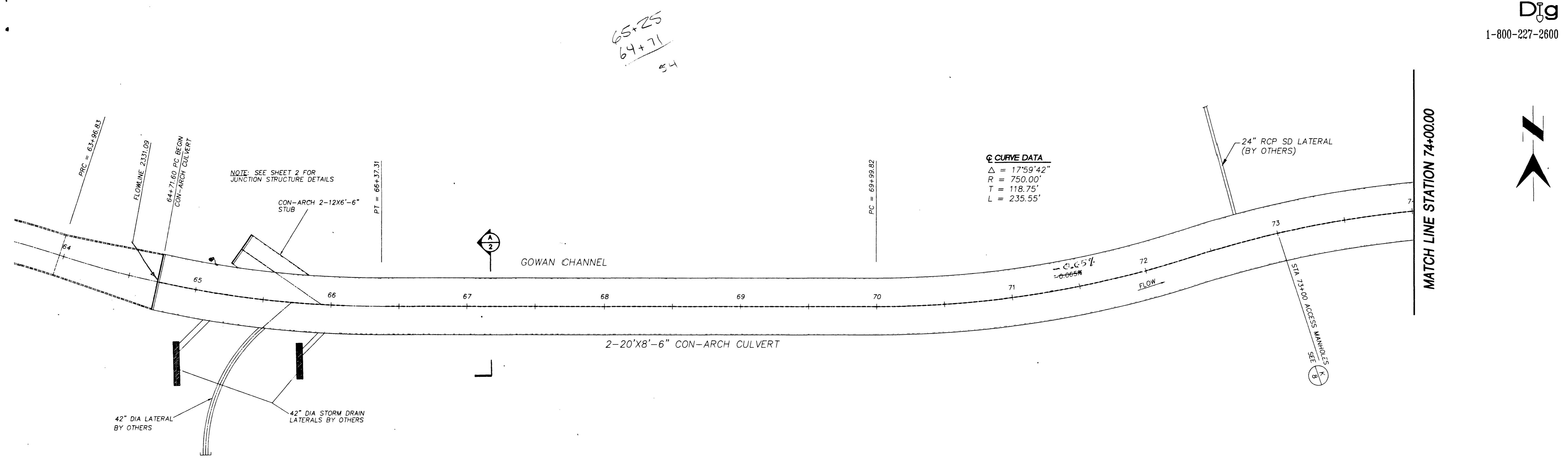
NOTE: See/perform only to work performed by Watson Engineering for Con-Arch culvert. Survey data, grades, hydraulic calculations etc. provided by others.



Department of Public Works
GOWAN NORTH CHANNEL - PHASE 1
CON-ARCH CULVERT PLAN
 STA 64+71 TO 81+70



DRAWING No. 731-65
 29



SUBMITTAL # 501.00.001
 CITY OF LAS VEGAS
 CITY ENGINEER DIVISION
 REVIEW IS FOR GENERAL COMPLIANCE WITH CONTRACT DOCUMENTS. NO RESPONSIBILITY IS ASSUMED FOR CORRECTNESS OF DIMENSIONS OR DETAILS.
 NO EXCEPTIONS TAKEN
 MAKE CORRECTIONS NOTED
 AMEND AND RESUBMIT
 REJECTED - SEE REMARKS
 DATE: 7/16/98 BY: [Signature]

44333