

**SURVEYOR'S CERTIFICATE**

- 1, ERIC CHRISTIANSON, A PROFESSIONAL LAND SURVEYOR, REGISTERED IN THE STATE OF NEVADA, CERTIFY THAT:
- 1) THIS PLAT REPRESENTS THE RESULTS OF A SURVEY CONDUCTED UNDER MY DIRECT SUPERVISION AT THE INSTANCE OF CLARK COUNTY SCHOOL DISTRICT
  - 2) THE LANDS SURVEYED, LIE WITHIN SECTION 24, TOWNSHIP 19 SOUTH, RANGE 50 EAST, M.D.M., CLARK COUNTY, NEVADA AND THAT THE SURVEY WAS COMPLETED ON APRIL 17, 1998.
  - 3) THIS PLAT COMPLIES WITH THE APPLICABLE STATE STATUTES AND LOCAL ORDINANCES IN EFFECT ON THE DATE THAT THE GOVERNING BODY GAVE ITS FINAL APPROVAL.
  - 4) THAT MONUMENTS DEPICTED ON THE PLAT ARE OF THE CHARACTER SHOWN AND OCCUPY THE POSITIONS INDICATED AND ARE OF SUFFICIENT NUMBER AND DURABILITY.

ERIC CHRISTIANSON  
PROFESSIONAL LAND SURVEYOR  
STATE OF NEVADA  
REGISTRATION NO. 8895

**BASIS OF BEARINGS:**

SOUTH 89°06'00" WEST, BEING THE SOUTH LINE OF THE SOUTHWEST QUARTER (SW1/4) OF THE SOUTHWEST QUARTER (SW1/4) OF SECTION 24, TOWNSHIP 19 SOUTH, RANGE 50 EAST, M.D.M., CLARK COUNTY, NEVADA AS SHOWN ON MAP IN FILE 37 OF SURVEYS, PAGE 21 OFFICIAL RECORDS CLARK COUNTY, NEVADA.

**NOTES**

ACREAGE: 74.57 ACRES ±

**REFERENCES**

- ROS - F.86, PG.65
- (R1) ROS - F.37, PG.21
- (R2) PM - F.82, PG.48
- (R3) PM - F.84, PG.84
- (R4) ROS - F.74, PG.58
- (R5) ROS - F.89, PG.03

**LEGEND**

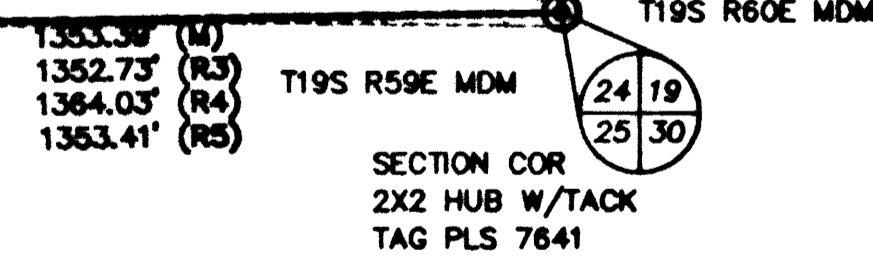
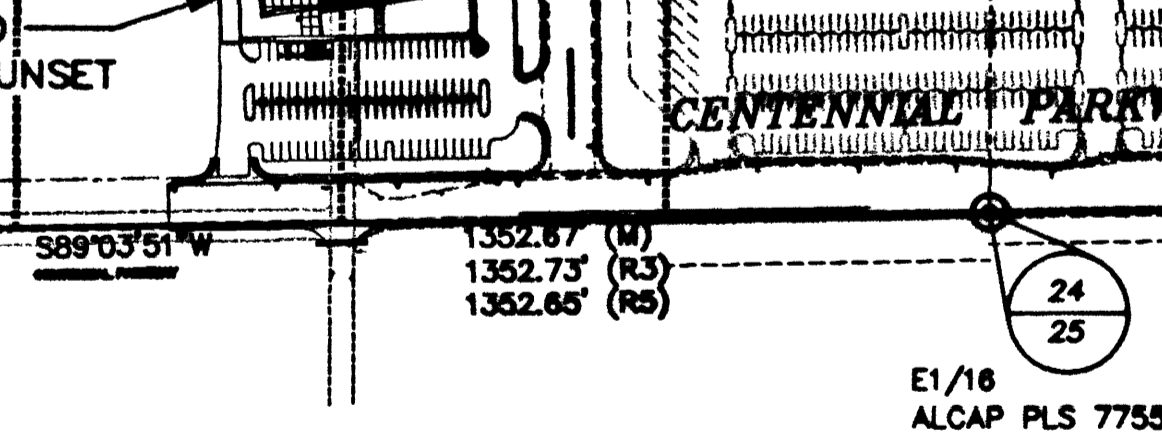
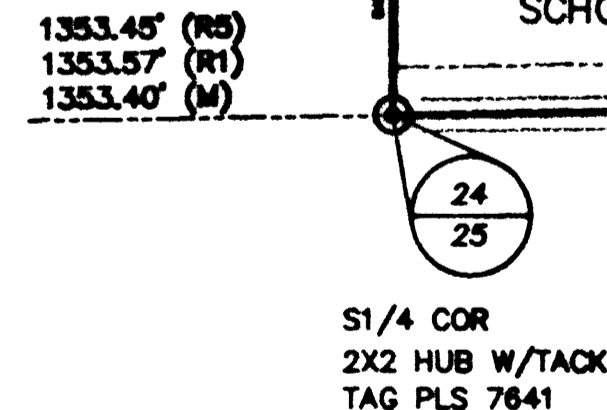
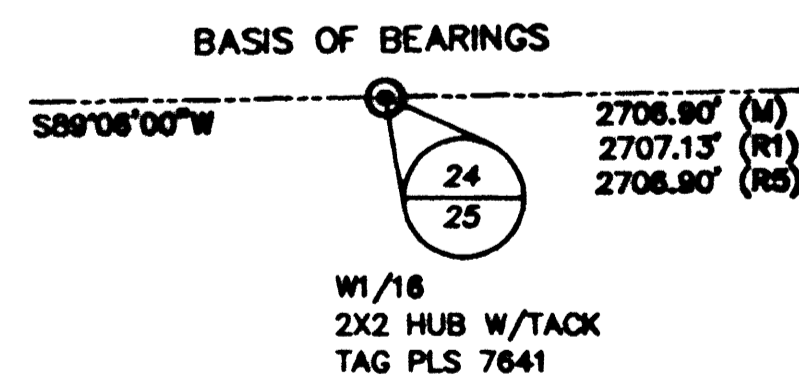
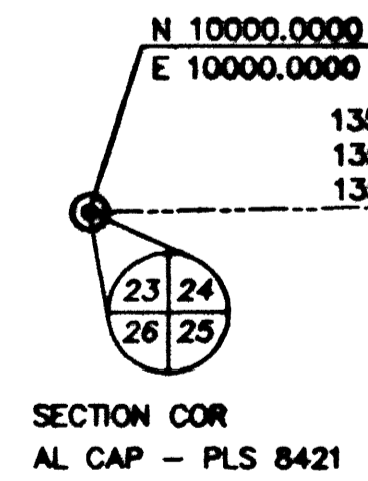
- BOUNDARY LINE
- SET 5/8" REBAR W/ALCAP PLS # 8895
- FOUND POINT AS NOTED
- (R) RADIAL BEARING
- C1 CURVE NUMBER
- L1 LINE NUMBER
- (M) MEASURED DISTANCE
- (R1) RECORD DISTANCE

**CURVE TABLE**

No.	RADIUS	DELTA	LENGTH	TANGENT
C1	2825.00'	17°24'06"	858.00'	432.33'
C2	2818.92'	10°59'31"	540.79'	271.23'
C3	1356.00'	35°30'39"	840.42'	434.20'
C4	50.00'	77°43'50"	67.83'	40.29'
C5	1470.00'	13°10'00"	337.81'	169.85'

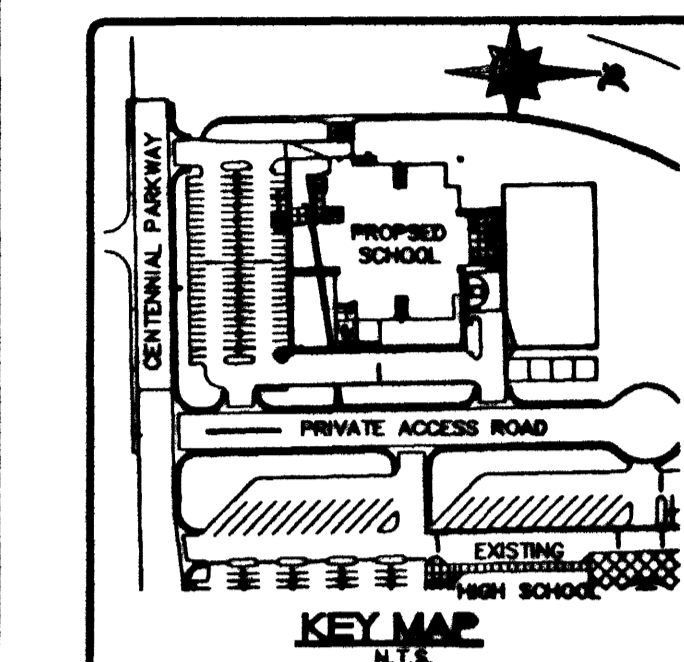
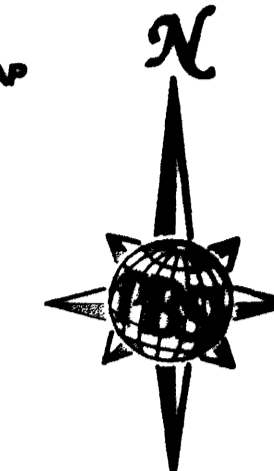
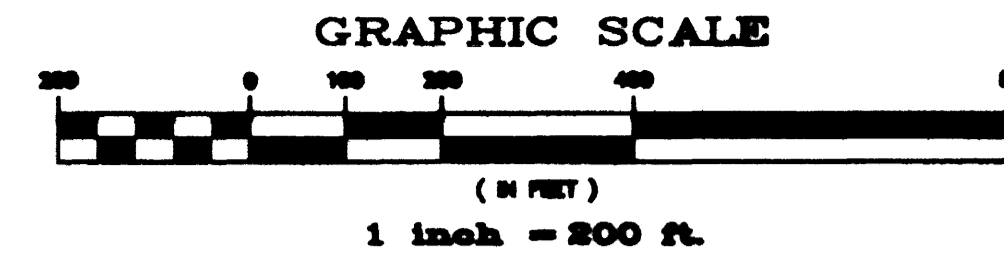
**LINE TABLE**

No.	BEARING	DISTANCE
L1	S00°24'35" W	130.00'
L2	N89°35'25" W	50.00'
L3	S84°09'15" E	232.72'
L4	N00°24'35" E	198.70'



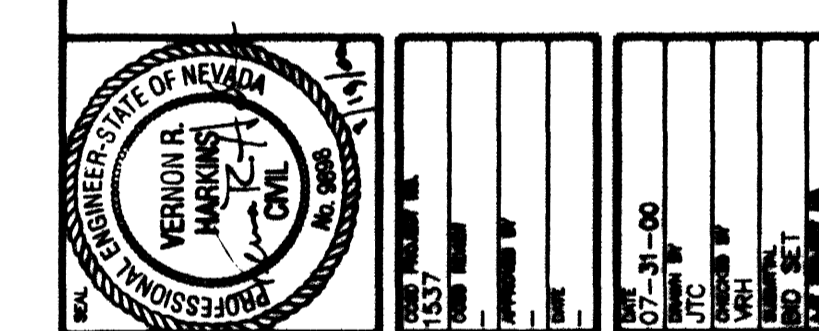
ANY SUBSEQUENT CHANGES TO THIS MAP SHOULD BE EXAMINED AND MAY BE DETERMINED BY REFERENCE TO THE COUNTY RECORDER'S CUMULATIVE MAP INDEX NRS 278.5695

SHEET 1 of 1  
EPC



Call before you DIG  
1-800-227-2800

Call before you OVERHEAD  
1-702-563-6111



**PBS&J**  
709 VALLE VERDE COURT  
HENDERSON NEVADA 89014  
(702) 456.3000

**TATE & SNYDER ARCHITECTS**  
709 VALLE VERDE COURT  
HENDERSON NEVADA 89014  
(702) 456.3000

**CLARK COUNTY SCHOOL DISTRICT**  
CONSTRUCTION MANAGEMENT DEPARTMENT 4828 S. PEARL STREET 798-7900 LAS VEGAS, NEVADA 89121

**HORIZON/SUNSET HIGH SCHOOL NORTHWEST**  
CLARK COUNTY

**SURVEY BOUNDARY CONTROL MAP**

**C2.00**  
715-128  
SHEET 3 of 14

THIS DOCUMENT IS THE PROPERTY OF PBS&J, INC. AND IS NOT TO BE REPRODUCED OR TRANSMITTED IN ANY FORM OR BY ANY MEANS, ELECTRONIC OR MECHANICAL, INCLUDING PHOTOCOPYING, RECORDING, OR BY ANY INFORMATION STORAGE AND RETRIEVAL SYSTEM, WITHOUT THE WRITTEN PERMISSION OF PBS&J, INC.

Copyright © 2000 PBS&J, INC.

1202-bnd.dwg JAG 08/09/00 10:45:48

27306