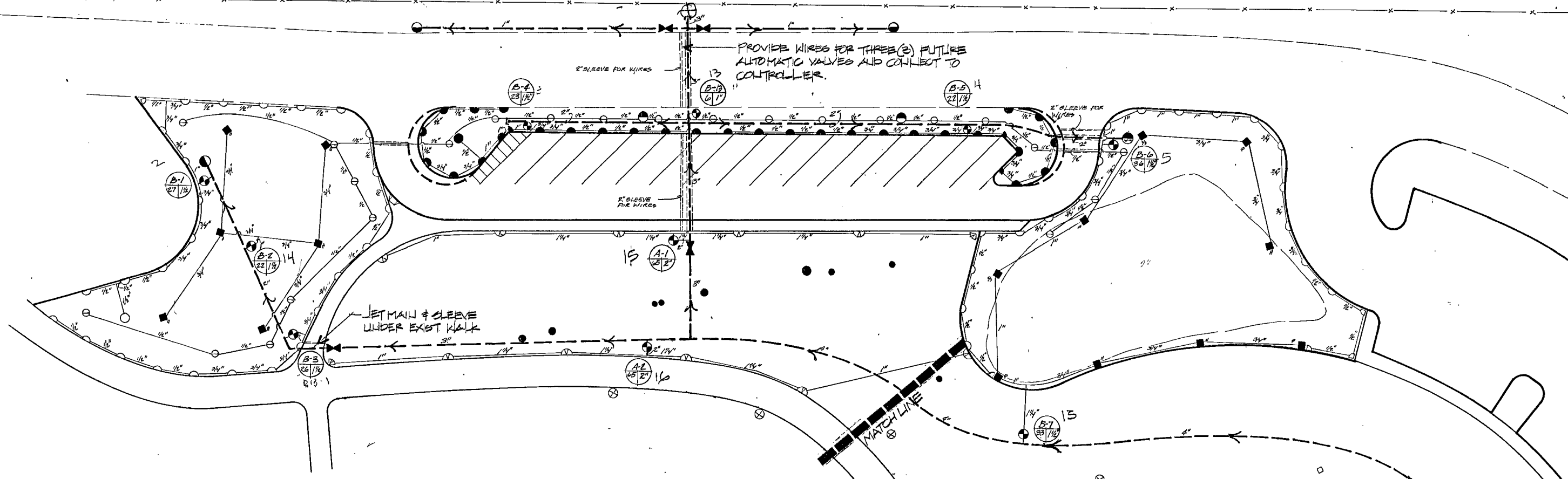


IRRIGATION NOTES

1. ALL SPRINKLER EQUIPMENT SHALL BE RAINBIRD AS SPECIFIED IN LEGEND TO MATCH EXISTING EQUIPMENT.
2. EXACT LOCATION OF CONTROLLERS SHALL BE DETERMINED BY THE PROJECT COORDINATOR.
3. ALL 24 VOLT WIRING UNDER PAVING SHALL BE IN P.V.C. SCH. 40 SLEEVES.
4. DRAWINGS ARE DIAGRAMATIC AND PLACEMENT OF BUBBLERS IS DEPENDENT ON PLACEMENT OF TREES, WHEN POSSIBLE.
5. ALL WIRING FROM VALVES TO CONTROLLERS IS TO BE INSTALLED IN COMMON TRENCH W/ WATER LINES WHEN POSSIBLE.
6. REFER TO SPECIFICATIONS FOR ADDITIONAL IRRIGATION EQUIPMENT AND INSTALLATION PROCEDURES.
7. OPERATE FULL CIRCLE LAWN SPRINKLER HEADS FOR 36 MINUTES PER STATION, SEVEN DAYS A WEEK TO APPLY 2.5 INCHES OF PRECIPITATION PER WEEK DURING PEAK MOISTURE USE.
8. OPERATE PART CIRCLE SPRINKLER HEADS FOR 26 MINUTES PER STATION, SEVEN DAYS A WEEK TO APPLY THE SAME AMOUNT OF WATER PER WEEK.
9. CONTROL NUMBER
VALVE NUMBER
VALVE SIZE
G.P.M. PER STATION

10. THE IRRIGATION CONTRACTOR SHALL FLUSH AND ADJUST ALL SPRINKLER HEADS FOR OPTIMUM PERFORMANCE AND TO PREVENT OVERSPRAY ONTO WALKS, ROADWAYS, AND OR BUILDINGS AS MUCH AS POSSIBLE. THIS SHALL INCLUDE SELECTING THE BEST DEGREE OF ARC TO FIT THE EXISTING SITE CONDITIONS AND TO THROTTLE THE FLOW CONTROL AT EACH VALVE TO OBTAIN THE OPTIMUM OPERATING PRESSURE FOR EACH SYSTEM.
11. POWER AND TELEPHONE ALONG FENCE LINE TO BE FIELD LOCATED BY THE UTILITIES COMPANIES PRIOR TO CONSTRUCTION.

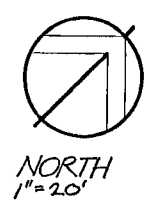
CAUTION!
POWER & TELEPHONE LOCATED ALONG FENCE LINE CONTINUOUS (CONTRACTOR TO HAVE UTILITIES LOCATE).



LEGEND

- FULL CIRCLE RAINBIRD ROTOR POP-UP #41-31A 6AM, 60'R 7/82 x 3/16 NOZZLE
- ◐ PART CIRCLE RAINBIRD ROTOR POP-UP #47A 6AM, 37'R 1/4 NOZZLE
- ◑ PART CIRCLE RAINBIRD ROTOR POP-UP #37A 6AM 40'R 7/82 NOZZLE
- ◒ FULL/PART CIRCLE RAINBIRD IMPACT ROTOR POP-UP MAXI-PAK 6AM 40'R 08 NOZZLE
- POP-UP SPRAY SPRINKLER RAINBIRD 1812-13 SERIES FULL CIRCLE
- ◐ POP-UP SPRAY SPRINKLER RAINBIRD 1812-13 SERIES THREE QUARTER CIRCLE
- ◑ POP-UP SPRAY SPRINKLER RAINBIRD 1812-13 SERIES HALF CIRCLE
- ◒ POP-UP SPRAY SPRINKLER RAINBIRD 1812-13 SERIES QUARTER CIRCLE
- POP-UP SPRAY SPRINKLER RAINBIRD 1812-12 SERIES FULL CIRCLE
- ◐ POP-UP SPRAY SPRINKLER RAINBIRD 1812-12 SERIES THREE QUARTER CIRCLE
- ◑ POP-UP SPRAY SPRINKLER RAINBIRD 1812-12 SERIES THIRD CIRCLE
- ◒ POP-UP SPRAY SPRINKLER RAINBIRD 1812-12 SERIES HALF CIRCLE
- ◓ POP-UP SPRAY SPRINKLER RAINBIRD 1812-12 SERIES QUARTER CIRCLE
- ⊙ PRESSURE COMPENSATING BUBBLER RAINBIRD #1402 FULL CIRCLE
- ⊙ POP-UP SPRAY SPRINKLER RAINBIRD 1804-15 SERIES HALF, QUARTER, THREE-QUARTER, FULL
- ⊙ REMOTE CONTROL VALVE - RAINBIRD EFA-CP-PRG - SIZES AS NOTED
- ⊙ AUTOMATIC CONTROLLER RAINBIRD EFA-CP-PRG - SIZES AS NOTED
- NON-PRESSURE PIPING - P.V.C. CL. 200 SOLVENT WELD PIPE
- PIPING UNDER PRESSURE - 4" & LESS CL. 160 RUBBER RING JOINTS
- ⊕ GATE VALVE W/ VALVE BOX & LID
- COH. 40 P.V.C. SOLVENT WELD SLEEVE - SIZE AS REQUIRED. SLEEVES TO BE JETTED UNDER EXIST. WALKS
- ⊗ EXISTING LAWN HEADS
- ⊙ QUICK COUPLER VALVE 1" - RAINBIRD #44 LVC, SUPPLY (6) 44 K(FE) 1/2 SCH 40 (SKIMEL)

SPI 820
1400
41



date	revisions

FILE NO. EL 83-85A 149.0	date
PROJ. NO. 52-00-00185	initial
PROJ. COORD. Bob MARTIN	
UNIT SUPV. Steve Weaver	
ASST. ADM. PERS. Steve Weaver	
DIR. ADMIN. Steve Weaver	

FLOYD LAMB STATE PARK

IRRIGATION PLAN

DEPARTMENT OF CONSERVATION and NATURAL RESOURCES

NEVADA DIVISION OF STATE PARKS

CAPITOL COMPLEX CARSON CITY NEVADA 89710

