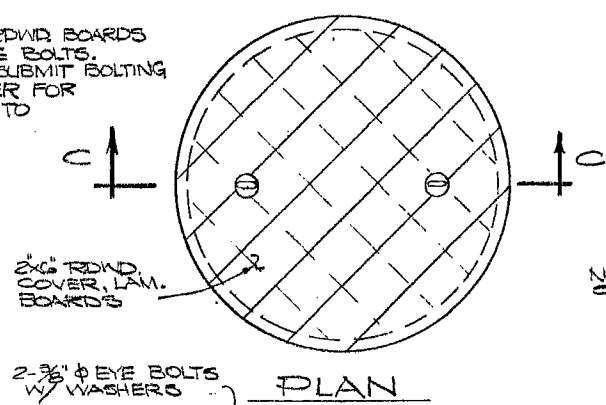
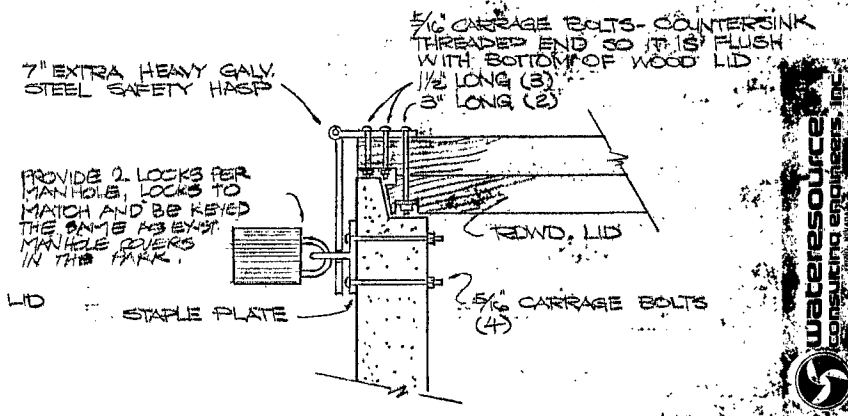


JOHNSON FLA. WATER INTAKE SCREEN 8'-12" LONG / 25" SLOTS OR APPROVED EQUAL

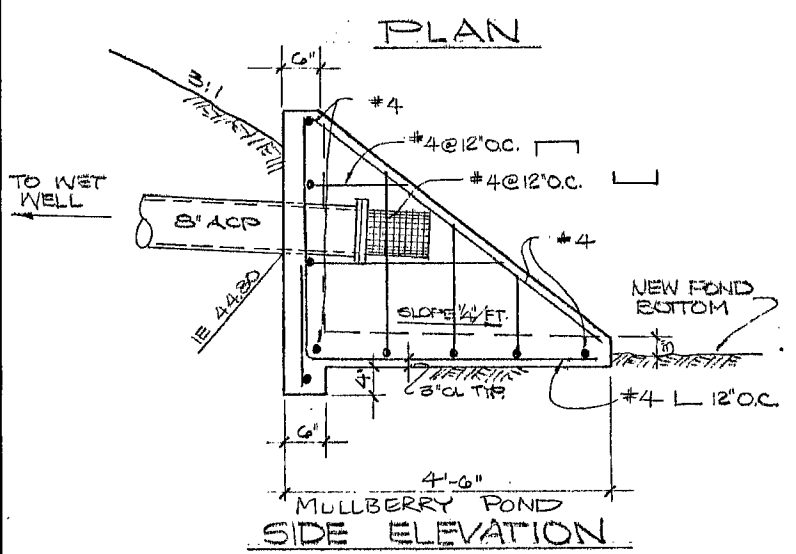
NOTE: LAMINATE 2X6' REDWOOD BOARDS UTILIZING CARRIAGE BOLTS. CONTRACTOR TO SUBMIT BOLTING PLAN TO ENGINEER FOR APPROVAL PRIOR TO FABRICATION.



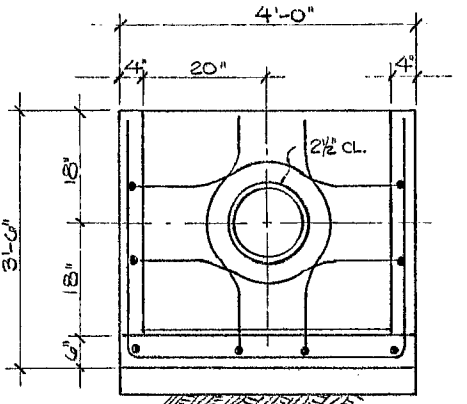
PLAN



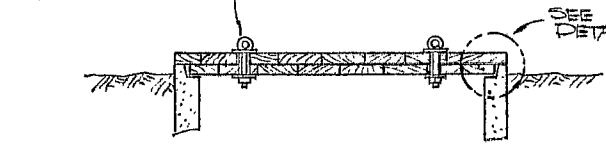
SAFETY HASP DETAIL



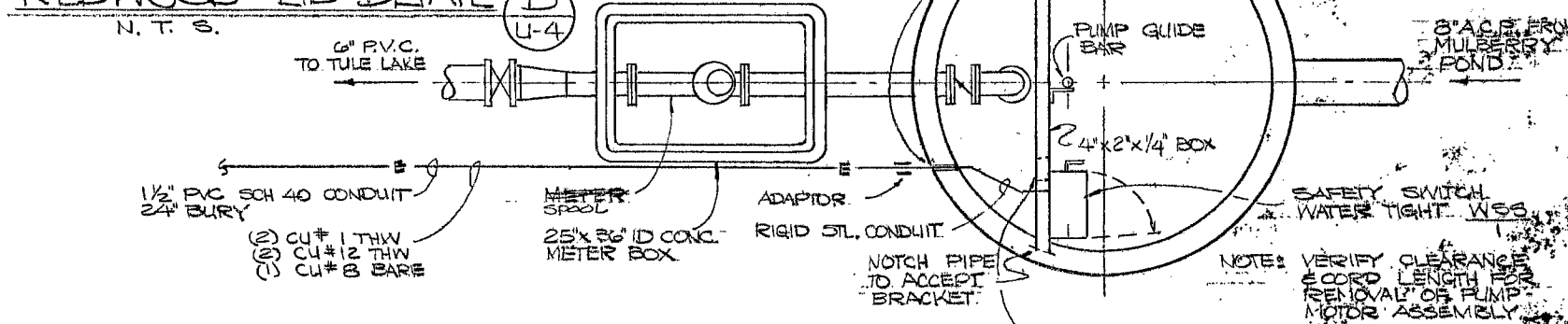
MULBERRY POND SIDE ELEVATION



FRONT ELEVATION

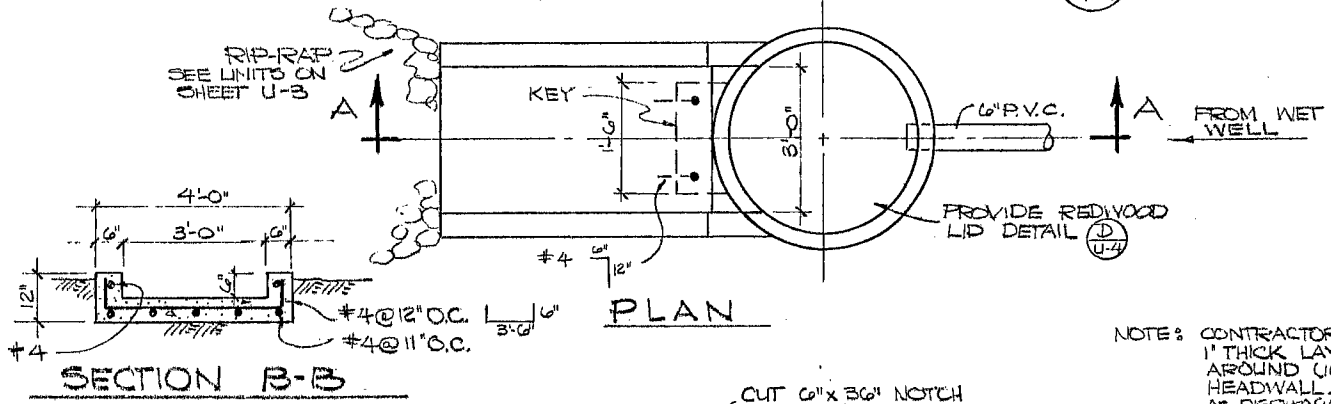


SECTION C-C REDWOOD LID DETAIL

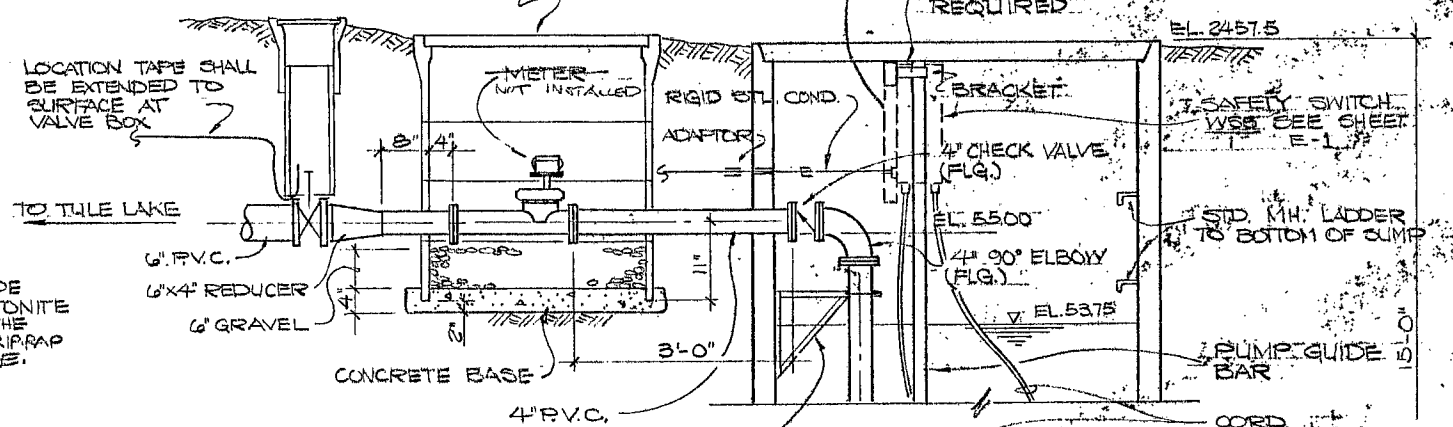


PLAN

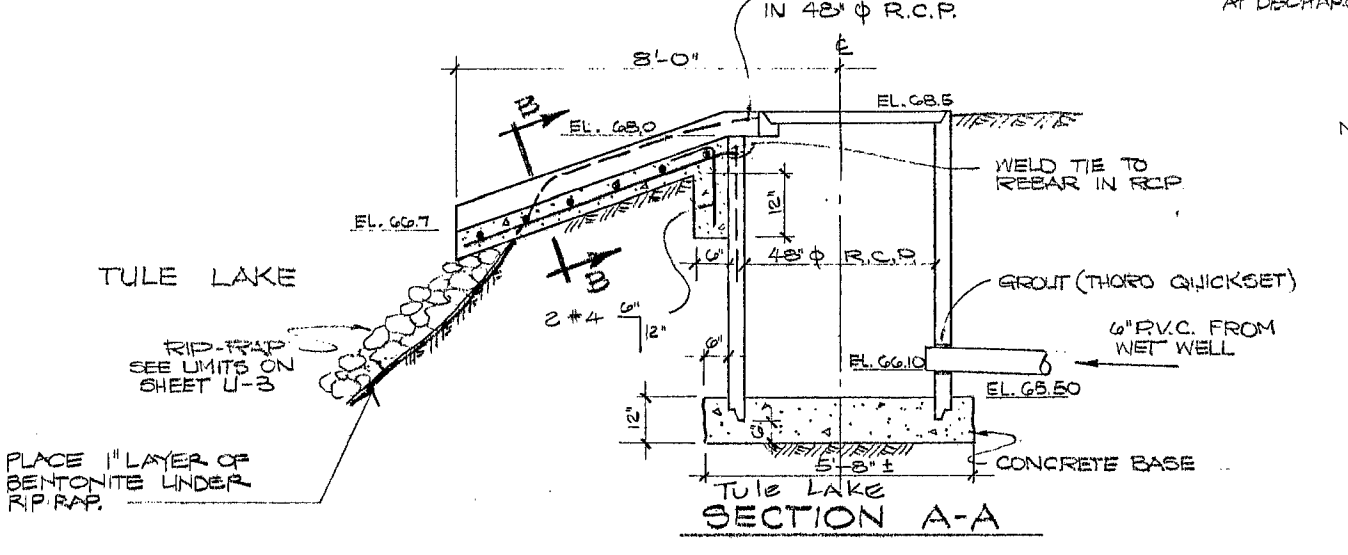
CONCRETE HEADWALL DETAIL



SECTION B-B



SECTION



SECTION A-A

DISCHARGE STRUCTURE DETAIL

NOTE: ALL 4" PVC PIPE SHALL BE SCH. 40

NOTE: CONTRACTOR SHALL SUPPLY 4" PVC FLANGED END FOR METER REPLACEMENT WHEN METER NOT IN USE.

NOTE: THE CONTRACTOR SHALL SUBMIT FOUR COPIES OF ALL PERFORMANCE CURVES AND DATA PERTINENT TO THE SPECIFIED CURVES FOR EACH PUMP SPECIFIED.



WET WELL & METER DETAIL

DATE: MAY 08
REVISIONS:

FILE NO. 010303-4110
PROJ. NO. 2700000112
PROJ. COORD. BOB MARTIN
UNIT SUPV. ASST. ADM. P&D
ASST. ADM. DIV. ADMIN.

FLORES LAMAR STATE PARK - PHASE III
RECIRCULATION PUMP WELLMET
AND DISCHARGE STRUCTURE DETAILS

DEPARTMENT OF CONSERVATION AND NATURAL RESOURCES
NEVADA DIVISION OF STATE PARKS
CAPITOL COMPLEX CARSON CITY NEVADA 89710

OF 7
U-4