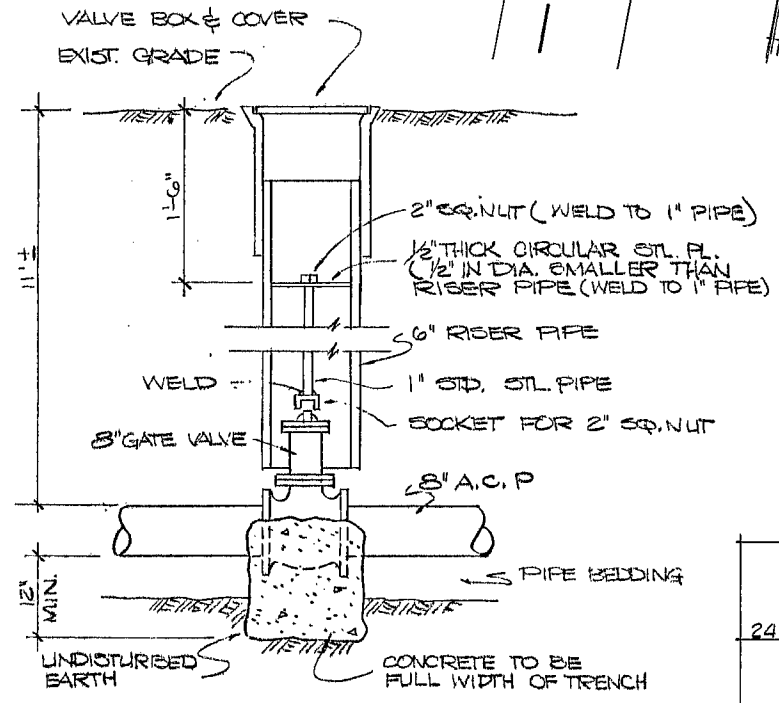
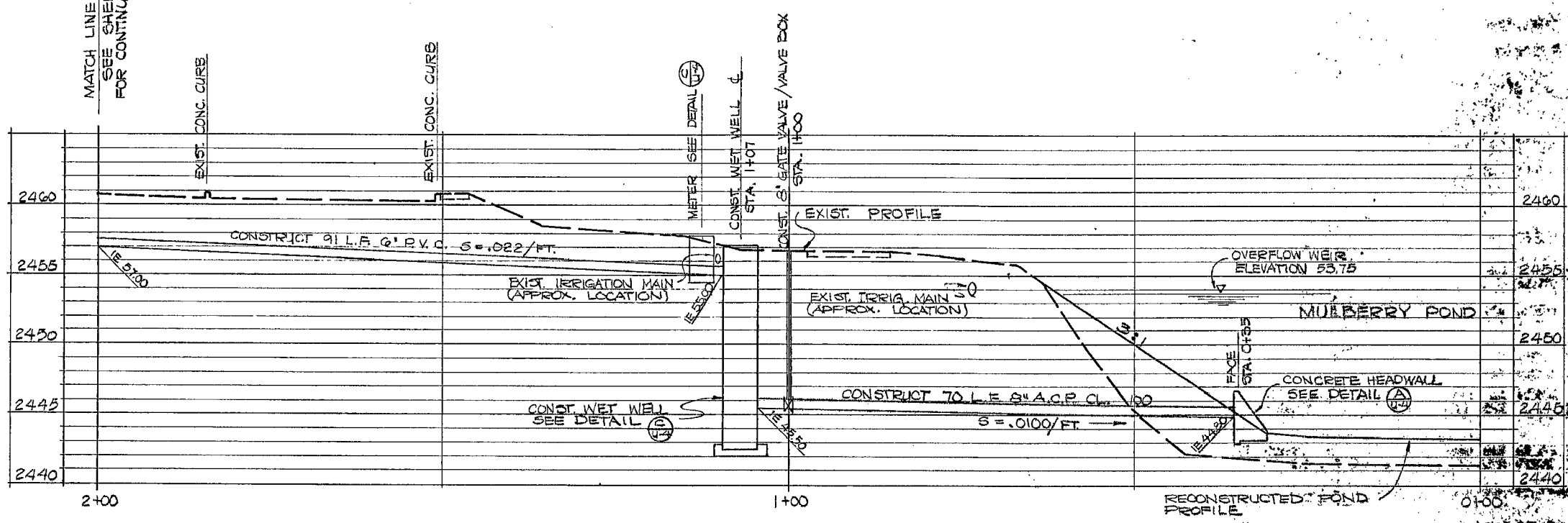


RECIRCULATION PIPELINE LAYOUT STA. 0+00 THRU 2+00
SCALE: 1"=10'



8" GATE VALVE AND VALVE BOX
DETAIL A
N.T.S. U-1

- NOTES:
1. CONTRACTOR SHALL REMOVE A MINIMUM OF 6 FEET OF EACH SIDE OF ALL ASPHALT AND CONCRETE BEFORE TRENCHING AND REPAIRS SHALL BE MADE OR APPROVED BY THE ENGINEER.
 2. LOCATIONS OF WATER AND SEWER LINES ARE APPROXIMATE ONLY AND MUST BE VERIFIED IN THE FIELD WITH THE PARK MAINTENANCE SUPERVISOR, JIM CHUSMITH PRIOR TO STARTING ANY TRENCHING.



RECIRCULATION PIPELINE PROFILE
SCALE: HORIZONTAL - 1"=10'
VERTICAL - 1"=5'



DATE	REVISIONS
11/11/10	1
11/11/10	2

FILE NO. E-161235-44.0
PROJ. NO. 24-00-0010
PROJ. COORD. E.B. MASIN
UNIT SUPV. J. MASIN
ASST. ADM. P.D.
ASST. ADM. O.B.M.
UNADMIN.

FLOODLAND STATE PARK - PHASE III
RECIRCULATION PIPELINE
PLAN & PROFILE

DEPARTMENT OF CONSERVATION AND NATURAL RESOURCES
NEVADA DIVISION
OF STATE PARKS
CARTON COMPLEX - CARSON CITY, NEVADA - 89710

