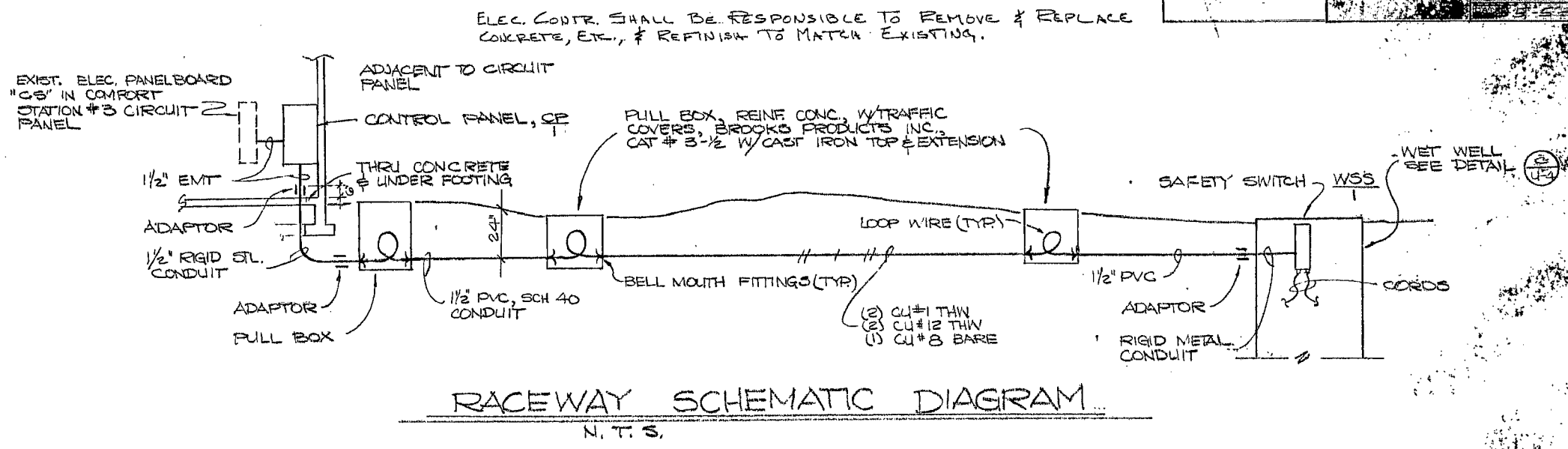
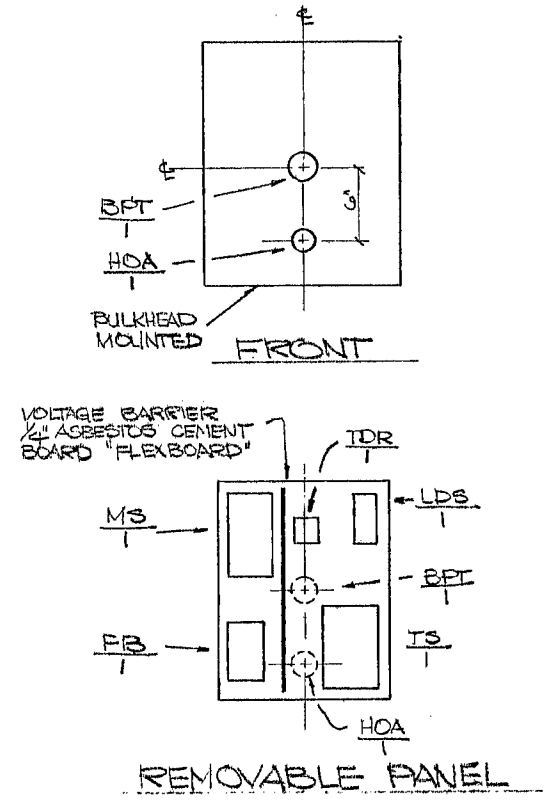


DATE: 1/15/70
 REVISIONS:
 FILE NO. 11-115-10
 PROJ. NO. 22-021140
 INITIALS: []
 PROJ. COORD. EDD MASTIN
 UNITS: SUPPLY
 ASST. ADM. PERS.
 DIVISION

ELECTRICAL PLAN DETAILS

NEWADA DIVISION OF STATE PARKS
 DEPARTMENT OF CONSERVATION AND NATURAL RESOURCES
 CARSON CITY, NEVADA-89710
 CARTON COMPLEX



BPT BYPASS TIMER, OFF TYPE, SPRING DRIVEN; MANUAL, 0 TO 5 HOURS; BULKHEAD/CENTER STD MOUNT; SPST CONTACTS RATED 1 HP @ 20 A @ 120 & 240 VAC; UL & CSA LISTED; W/O "HOLD" POSITION; M.H. RHODES CO., "MARK-TIME" CAT # 7401B0DK

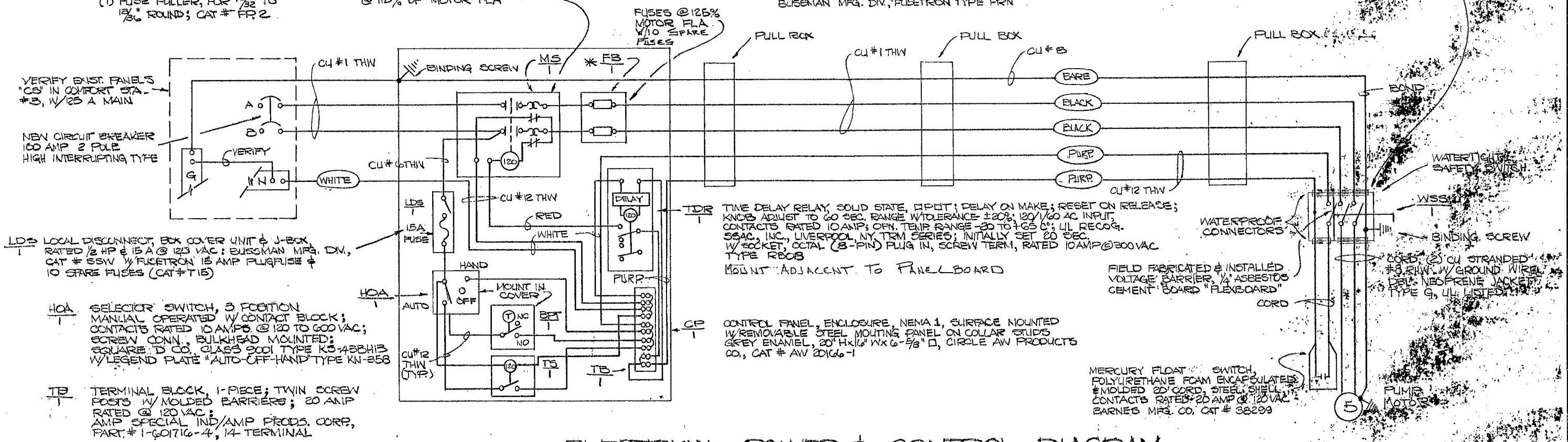
TS TIME SWITCH 24 HOUR W/DAY OMITTING, LESS CASE W/BACKET (OPEN); RATED 40A PER POLE @ 277 VAC & 1HP @ 120 VAC; SPST CONTACTS, 120/1/60 FULL UP COIL; TORK TIME CONTROLS CO., MODEL 7100

*** PROVIDE** (6) CLIP CLAMPS, 0 TO 60 AMPS
 (6) FUSE REDUCER, 60 TO 30 AMPS
 (1) FUSE FULLER, FOR 1/2" TO 3/8" ROUND; CAT # FR-2

MS MAGNETIC STARTER, ACROSS THE LINE, NEMA SIZE 1P OPEN TYPE; RATED 5HP @ 230 VAC, MELTING ALLOY OVERLOAD RELAYS, 2 POLE; SQUARE D CO. CLASS 8536 CAT # 500-2 OVERLOAD RELAYS @ 115% OF MOTOR FLA

FB FUSE BLOCK, CLASS K FUSES, MOLDED PHENOLIC W/SIDE BARRIERS, 60 AMP MAX @ 250 VAC, 2 POLE BUSSMAN MFG. DIV., CAT # 2730 FUSES, TIME DELAY, DUAL ELEMENT, CLASS K 250 VAC; BUSSMAN MFG. DIV., "FLEETRON" TYPE FRN

WSS WATERTIGHT SAFETY SWITCH, HVV DUTY, NEMA 4, NON-FUSEIBLE; 100 AMP, 3 POLE, 600 VOLT; SQUARE D CO., CAT # HU 365 DS



VERIFY EXIST. PANELS "CS" IN COMFORT STA. #3, W/25 A MAIN
 NEW CIRCUIT BREAKER 100 AMP 2 POLE HIGH INTERRUPTING TYPE
LDS LOCAL DISCONNECT, EX COVER UNIT & J-BOX RATED 1/2 HP @ 15 A @ 125 VAC; BUSSMAN MFG. DIV., CAT # 55W W/FLEETRON 15 AMP PLUG FUSE & 10 SPARE FUSES (CAT # T-15)

HOA SELECTOR SWITCH, 3 POSITION MANUAL OPERATED W/CONTACT BLOCK; CONTACTS RATED 10 AMPS @ 120 TO 600 VAC; SCREW CONN., BULKHEAD MOUNTED; SQUARE D CO., CLASS 9001 TYPE K3-43BH3 W/LEGEND PLATE "AUTO-OFF-HAND" TYPE KN-258

TB TERMINAL BLOCK, 1-PIECE; TWIN SCREW POSTS W/MOLDED BARRIERS; 20 AMP RATED @ 120 VAC; AMP SPECIAL IND/AMP PRODS. CORP., PART # 1-60716-4, 14 TERMINAL

TDR TIME DELAY RELAY, SOLID STATE, DIPOT; DELAY ON MAKE; RESET ON RELEASE; KNOBS ADJUST TO 60 SEC RANGE W/TOLERANCE ±20%; 120/1/60 AC INPUT; CONTACTS RATED 10AMP; OPN. TEMP RANGE -30 TO +65 C; UL RECOG. SSAC, INC., LIVERPOOL NY TRM SERIES; INITIALLY SET 20 SEC. W/ SOCKET, OCTAL (8-PIN) PLUG IN, SCREW TERM., RATED 10AMP @ 300VAC TYPE RB08
 MOUNT ADJACENT TO PANELBOARD

CP CONTROL PANEL, ENCLOSURE, NEMA 1, SURFACE MOUNTED W/REMOVABLE STEEL MOUNTING PANEL ON COLLAR STRIPS GREY ENAMEL, 20" H X 16" W X 6-5/8" D, CIRCLE AV PRODUCTS CO., CAT # AV 2016-1

FIELD FABRICATED & INSTALLED VOLTAGE BARRIER, 1/4" ASBESTOS CEMENT BOARD "FLEXBOARD"
 WATERTIGHT SAFETY SWITCH
 WSS
 BINDING SCREW
 (6) #8 CU STRANDED W/GROUND WIRE DELV. NEOPRENE JACKET TYPE G, UL LISTED
 MERCURY FLOAT SWITCH, POLYURETHANE FOAM ENCAPSULATED #MOLDED 20' CORD, STEEL SHELL CONTACTS RATED 20 AMP @ 120 VAC; BARNES MFG. CO., CAT # 38299
 PUMP MOTOR