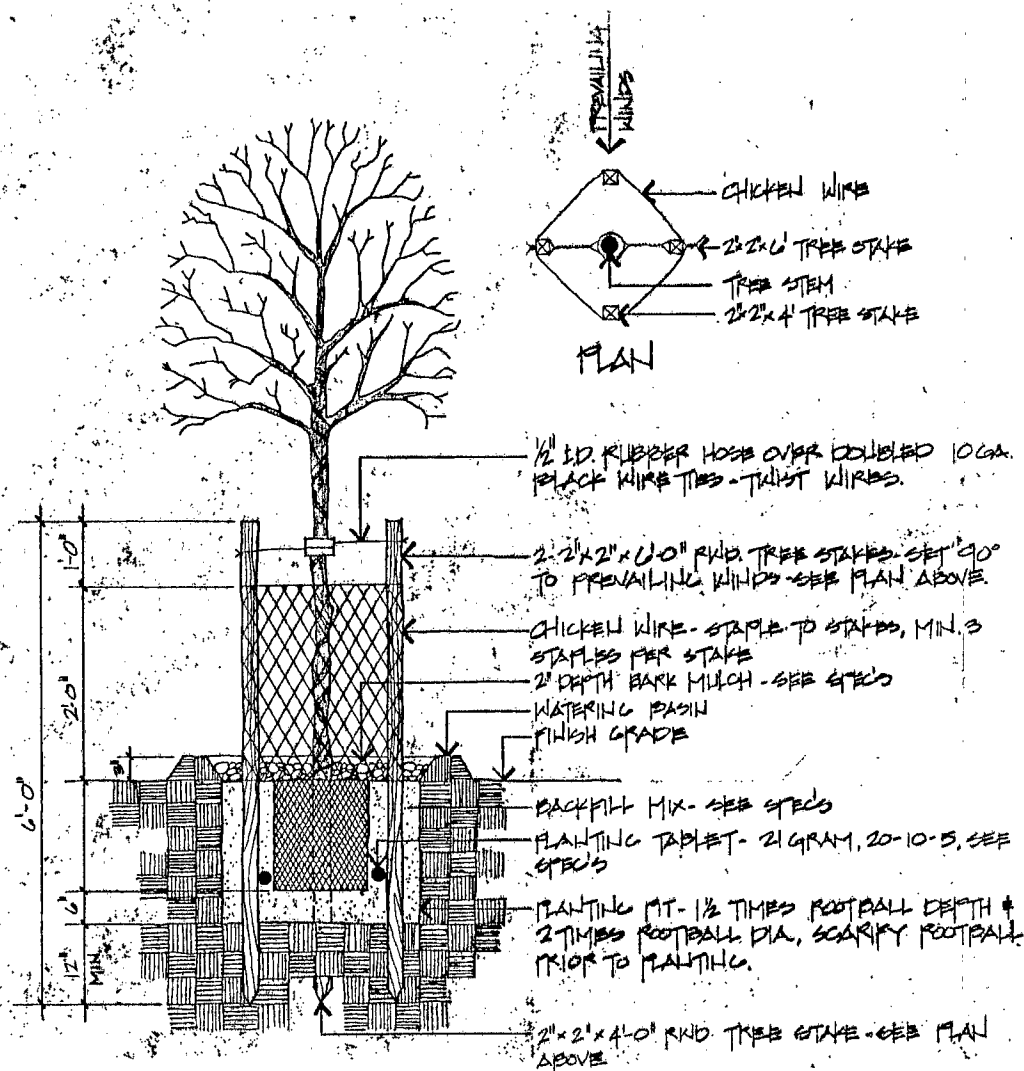


SHRUB PLANTING DETAIL  
NO SCALE



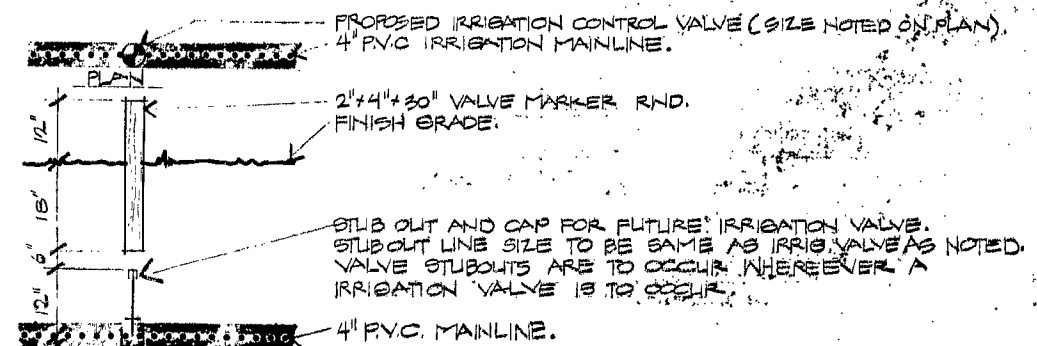
TREE PLANTING DETAIL  
NO SCALE

NOTES:

- 1) ALL SPRINKLER HEADS MUST BE INSTALLED IN ACCORDANCE WITH THE MANUFACTURER'S INSTRUCTIONS AND THE IRRIGATION CONTRACTOR SHALL BE RESPONSIBLE FOR THE PROPER INSTALLATION AND MAINTENANCE OF THE SYSTEM.
  - 2) EXACT LOCATION OF ALL CONTROLLERS SHALL BE SHOWN ON THE IRRIGATION PLAN.
  - 3) ALL VALVES SHALL BE INSTALLED IN ACCORDANCE WITH THE IRRIGATION CONTRACTOR'S SPECIFICATIONS.
  - 4) OPERATE ALL VALVES IN ACCORDANCE WITH THE IRRIGATION CONTRACTOR'S INSTRUCTIONS.
  - 5) OPERATE ALL VALVES IN ACCORDANCE WITH THE IRRIGATION CONTRACTOR'S INSTRUCTIONS.
  - 6) TOTAL SYSTEM FLOW SHALL NOT EXCEED THE CAPACITY OF THE MAINLINE.
  - 7) OPERATE ALL CONTROLLERS IN ACCORDANCE WITH THE IRRIGATION CONTRACTOR'S INSTRUCTIONS.
  - 8) VALVE SIZE SHALL BE AS NOTED ON THE PLAN.
  - 9) THIS DESIGN IS DIAGNOSTIC. ALL PIPING, VALVES, ETC. SHALL BE INSTALLED IN ACCORDANCE WITH THE IRRIGATION CONTRACTOR'S SPECIFICATIONS AND THE IRRIGATION CONTRACTOR SHALL BE RESPONSIBLE FOR THE PROPER INSTALLATION AND MAINTENANCE OF THE SYSTEM.
  - 10) THE IRRIGATION CONTRACTOR SHALL FLUSH AND ADJUST ALL SPRINKLER HEADS FOR OPTIMUM PERFORMANCE AND TO PREVENT OVERSPRINKING OF WALKS, ROADS, AND OTHER BUILDINGS AS MUCH AS POSSIBLE. THE CONTRACTOR SHALL INCLUDE SELECTING THE BEST DESIGN OF VALVE TO FIT THE DESIGN AND TO THROTTLE THE FLOW CONTROL. A CHECK VALVE TO MAINTAIN THE OPTIMUM OPERATING PRESSURE FOR EACH SYSTEM.
- \* 11. IF BID ITEMS B (AREA A IRRIGATION) and/or C (AREA B+C) ARE DELETED FROM THE CONTRACT THE CONTRACTOR SHALL INSTALL 20% MORE VALVE MARKERS WITH THESE ADJUSTED FOR ALL FUTURE VALVE AND CONTROL VALVE LOCATIONS OFF THE MAINLINE SEE DETAIL DRAWING.
- \* 12. QUICK CLOSING VALVES ARE TO BE BID AS PART OF THE IRRIGATION MAINLINE SEE DETAIL DRAWING.

LEGEND

- FULL CIRCLE RAINBIRD ROTOR RPLP # 31A - 3/4" 1/2" NOZZLE
- PART CIRCLE RAINBIRD ROTOR RPLP # 31A - 3/4" 1/2" NOZZLE
- PART CIRCLE RAINBIRD ROTOR RPLP # 31A - 3/4" 3/8" NOZZLE
- PART CIRCLE RAINBIRD ROTOR RPLP # 31A - 3/4" 1/8" NOZZLE
- LYZZ RPLP # 2800 FULL CIRCLE
- LYZZ RPLP # 2800 HALF CIRCLE
- LYZZ RPLP # 2800 THIRD CIRCLE
- LYZZ RPLP # 2800 QUARTER CIRCLE
- RAINBIRD CONTROL VALVE - RAINBIRD EPA COP - PRESS - SIZE NOTED (TURE)
- QUICK CLOSING VALVE - RAINBIRD # 41 LYC, SUPPLY (G) 4 1/2" (N) 1/2" (S) (SHWEL)
- AUTOMATIC CONTROLLER - RAINBIRD RO SERIES - SEE PLANS FOR SIZE
- NON-PRESSURE PIPING - PVC, PL 200 SOLVENT WELD PIPE
- PIPING UNDER PRESSURE - 4" CLASS 150 - RUBBER AND JOINTS (SEE DETAIL)
- PIPING UNDER PRESSURE - 4" CLASS 150 - RUBBER AND JOINTS (SEE DETAIL)
- GATE VALVE W/ VALVE BOX AND LID - SIZE NOTED
- ==== 8CH. 40 PVC SOLVENT WELD SLEEVE - SIZE AS REQUIRED



IRRIGATION VALVE MARKERS  
NO SCALE

date MAY 84  
revisions

FILE NO. 1-1-1-1-1-1-1-1-1-1  
PROJ. NO. 1-1-1-1-1-1-1-1-1-1  
DATE  
UNIT SUPV. ASST. ADM. PERS. DIV. ADMIN.

IRRIGATION LEGEND NOTES  
DETAILS

DEPARTMENT OF CONSERVATION and NATURAL RESOURCES  
NEVADA DIVISION  
OF STATE PARKS  
CAPITOL COMPLEX CARSON CITY NEVADA 89710