

# LEGEND...

- FULL CIRCLE ROTOR POP UP-RAIN BIRD #41A-SAM-RC 1/4" X 11/64" NOZZLES
- PART CIRCLE ROTOR POP UP-RAIN BIRD #47A-SAM-RC 9/32" NOZZLE
- PART CIRCLE ROTOR POP UP-RAIN BIRD #47A-SAM-RC 1/4" NOZZLE
- PART CIRCLE ROTOR POP UP-RAIN BIRD #37A-SAM-RC 3/16" NOZZLE
- PART CIRCLE ROTOR POP UP-RAIN BIRD #37A-SAM-RC 3/16" NOZZLE
- PART CIRCLE ROTOR POP UP-RAIN BIRD #27A-SAM-RC 9/64" NOZZLE
- LAWN POP UP-RAIN BIRD #2800-F, H, T & Q.
- SHRUB SPRAY-RAIN BIRD #2400-H.
- FLAT SHRUB SPRAY-RAIN BIRD #2400-FLT.-Q.
- QUICK COUPLING VALVE 1"-RAIN BIRD #44 LVC
- REMOTE CONTROL VALVE-RAIN BIRD EFA-CP-SIZE AS SHOWN (TURF).
- REMOTE CONTROL VALVE-RAIN BIRD TH-SIZES AS SHOWN (EMITTERS).
- 12 STATION AUTOMATIC CONTROLLER-RAIN BIRD RC-12B (TURF).
- 18 STATION AUTOMATIC CONTROLLER-RAIN BIRD RC-18B (TURF).
- 13 STATION AUTOMATIC CONTROLLER-RAIN BIRD RC-13 (EMITTER).
- 7 STATION AUTOMATIC CONTROLLER-RAIN BIRD RC-7 (EMITTER).
- PART CIRCLE IMPACT-RAIN BIRD #25 PJ SPECIAL-3/16" NOZZLE
- PART CIRCLE IMPACT-RAIN BIRD #25 PJ SPECIAL-1/8" NOZZLE
- PIPING UNDER PRESSURE (BID ITEM "X").
- PIPING UNDER PRESSURE (INCLUDED WITHIN BID ITEMS OTHER THAN BID ITEM "X").
- PIPING UNDER PRESSURE-4" (BID ITEM "BB").
- PIPING UNDER PRESSURE-EMITTER SYSTEM (BID ITEM "CC" & "HH").
- PIPING UNDER PRESSURE-EMITTER SYSTEM (INCLUDED WITHIN BID ITEMS OTHER THAN BID ITEM "CC" & "HH").
- PIPING UNDER PRESSURE (2" & LARGER) SHALL BE PVC CL. 160 RUBBER RING JOINT PIPE.
- PIPING UNDER PRESSURE (1 1/2" & SMALLER) SHALL BE PVC SCH. 40 SOLVENT WELD PIPE.
- NON PRESSURE PIPING-PVC CL. 200 SOLVENT WELD PIPE.
- NON PRESSURE EMITTER FEEDER LINE (GROUND COVER AND SHRUB AREAS)-3/4" POLYETHYLENE TUBING.
- NON PRESSURE EMITTER FEEDER LINE (TREES)-3/4" POLYETHYLENE TUBING.
- MANUAL FLUSHING END PLUG-3/4"
- CONNECTION BETWEEN PVC LATERAL AND POLYETHYLENE FEEDER LINE.
- 1-1/4" REDUCED PRESSURE VACUUM BREAKER-RAIN BIRD #RP 125.
- TWO (2) 3/4" FILTERS IN TANDEM.
- 1-1/4" PRESSURE REGULATOR.
- GATE VALVE INCLUDED IN BID ITEM "X" AND BID ITEM "BB-SAME SIZE AS LINE.
- GATE VALVE INCLUDED WITHIN BID ITEMS OTHER THAN "X" AND "CC" & "HH"-SAME SIZE AS LINE.
- EXISTING GATE VALVE (POINT OF CONNECTION).
- EXISTING MAIN (PHASE 1-A)
- EXISTING RCV (PHASE 1-A)
- EXISTING ROTOR POP UP (PHASE 1-A)
- EXISTING LATERAL PIPE (PHASE 1-A)
- SLEEVING UNDER PAVING FOR 24 VOLT WIRING-PVC SCH. 40 SOLVENT WELD PIPE

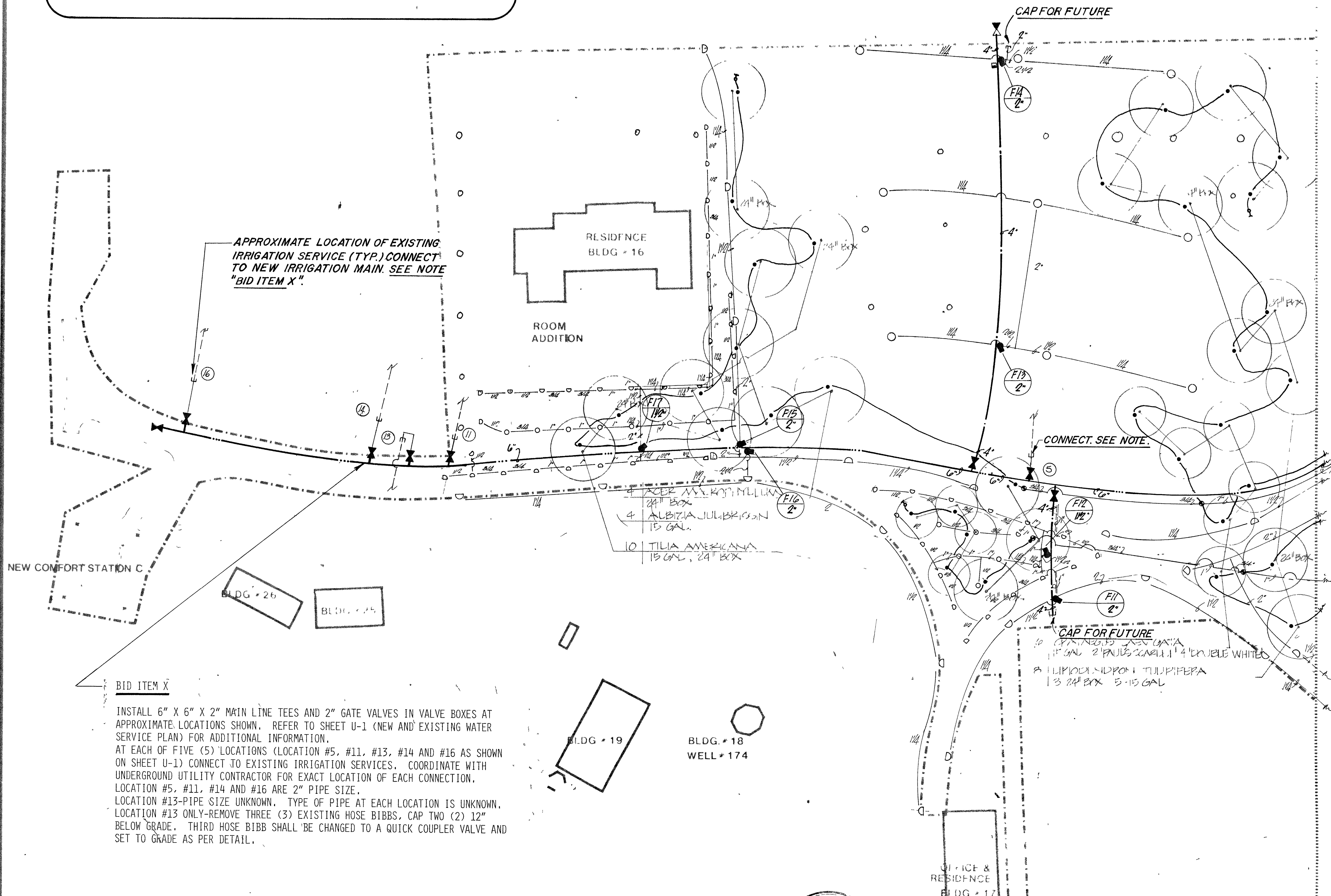
# NOTES...

1. ALL SPRINKLER EQUIPMENT SHALL BE RAIN BIRD AS SPECIFIED IN LEGEND. TO MATCH EXISTING EQUIPMENT IN PHASE 1-A.
2. SET PRESSURE REGULATOR FOR EMITTER SYSTEM AT 35 PSI.
3. EXACT LOCATION OF CONTROLLERS SHALL BE DETERMINED BY LANDSCAPE ARCHITECT.
4. EMITTER SYSTEM INSTALLATION SHALL BE COORDINATED WITH PLANTING INSTALLATION.
5. ALL 24 VOLT WIRING UNDER WALKS SHALL BE IN PVC SCH. 40 SLEEVES.
6. CONTROLLER "D" IS A 12 STATION CONTROLLER; CONTROLLERS "E" AND "F" ARE 18 STATION CONTROLLERS. CONTROLLER "M" IS A 13 STATION CONTROLLER; CONTROLLERS "W" AND "Z" ARE 7 STATION CONTROLLERS. CONTROLLERS "Y", "W" AND "Z" SHALL HAVE EXTENDED TIMING FROM 1.2 HOURS MINIMUM TO 24 HOURS PER STATION.
7. ABANDON EXISTING LATERAL LINE AND CAP AS REQUIRED. REMOVE THREE (3) EXISTING ROTOR POP UP HEADS AND DELIVER TO OWNER. CHANGE EXISTING 2" RCV (PHASE 1-A, RCV B-9) TO 1-1/4" RCV AND DELIVER 2" RCV TO OWNER.
8. BID ITEM "AA"-INSTALL 4" PVC MAIN FROM GATE VALVE (BID ITEM "X") TO LOCATION OF TEMPORARY PUMP. CONNECT TO EXISTING SYSTEM AT THIS LOCATION. CONTACT MR. JIM SHOESMITH AT PARK HEADQUARTERS FOR ADDITIONAL INFORMATION. REMOVE AND DELIVER PUMP TO OWNER.
9. SHOULD BID ITEM "M" BE ACCEPTED, SALVAGE OF EXISTING SYSTEM WILL BE BY OWNER.

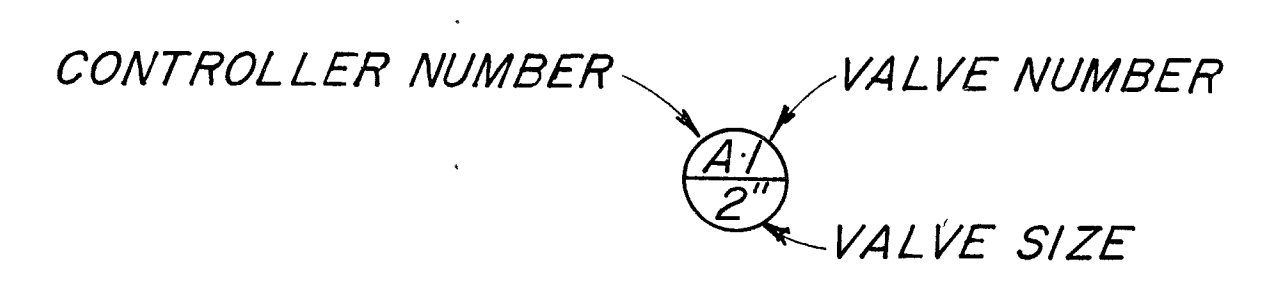
# OPERATION...

1. OPERATE FULL CIRCLE SPRINKLER HEADS FOR 36 MINUTES PER STATION, SEVEN (7) DAYS PER WEEK TO APPLY 2.5 INCHES OF PRECIPITATION PER WEEK DURING PEAK MOISTURE USE. OTHER PERIODS WILL REQUIRE LESS WATERING.
2. OPERATE PART CIRCLE SPRINKLER HEADS FOR 26 MINUTES PER STATION, SEVEN (7) DAYS PER WEEK TO APPLY THE SAME AMOUNT OF WATER PER WEEK.
3. TOTAL WATERING TIME FOR TURF IS NINE (9) HOURS PER DAY.
4. OPERATE ALL CONTROLLERS SIMULTANEOUSLY.
5. OPERATE EMITTERS FOR FOUR (4) HOURS PER STATION, EVERY FOUR (4) DAYS DURING PEAK MOISTURE PERIODS. OTHER PERIODS WILL REQUIRE LESS WATERING.

SEE SHEET NO. 19 FOR BID ITEM LIST.



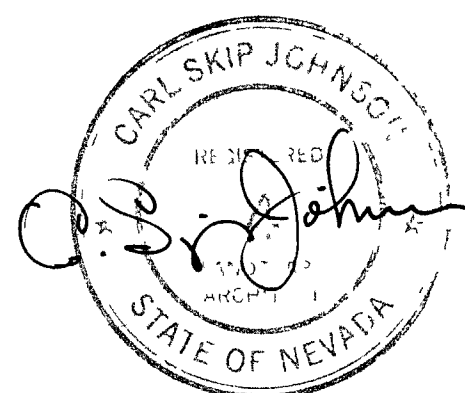
**BID ITEM X**  
 INSTALL 6" X 6" X 2" MAIN LINE TEES AND 2" GATE VALVES IN VALVE BOXES AT APPROXIMATE LOCATIONS SHOWN. REFER TO SHEET U-1 (NEW AND EXISTING WATER SERVICE PLAN) FOR ADDITIONAL INFORMATION.  
 AT EACH OF FIVE (5) LOCATIONS (LOCATION #5, #11, #13, #14 AND #16 AS SHOWN ON SHEET U-1) CONNECT TO EXISTING IRRIGATION SERVICES. COORDINATE WITH UNDERGROUND UTILITY CONTRACTOR FOR EXACT LOCATION OF EACH CONNECTION. LOCATION #5, #11, #14 AND #16 ARE 2" PIPE SIZE.  
 LOCATION #13-PIPE SIZE UNKNOWN. TYPE OF PIPE AT EACH LOCATION IS UNKNOWN. LOCATION #13 ONLY-REMOVE THREE (3) EXISTING HOSE BIBBS, CAP TWO (2) 12" BELOW GRADE. THIRD HOSE BIBB SHALL BE CHANGED TO A QUICK COUPLER VALVE AND SET TO GRADE AS PER DETAIL.



CONTROLLER AND VALVE DESIGNATION

CHARLES SALADINO-LANDSCAPE ARCHITECT-ASLA-LTD  
**IRRIGATION PLAN AREAS A, C**  
 FLOYD LAMB STATE PARK AT TULE SPRINGS PHASE 1-B & 2  
 NEVADA DIVISION OF STATE PARKS  
 1395 HASKELL ST. - SUITE C - RENO, NEVADA - 89509-702-786-2560

OCTOBER 1979  
  
**sherman johnson associates**  
 irrigation consultants  
 SJA JOB NO. 79-184-1B  
 REVISD APRIL 1980



101345