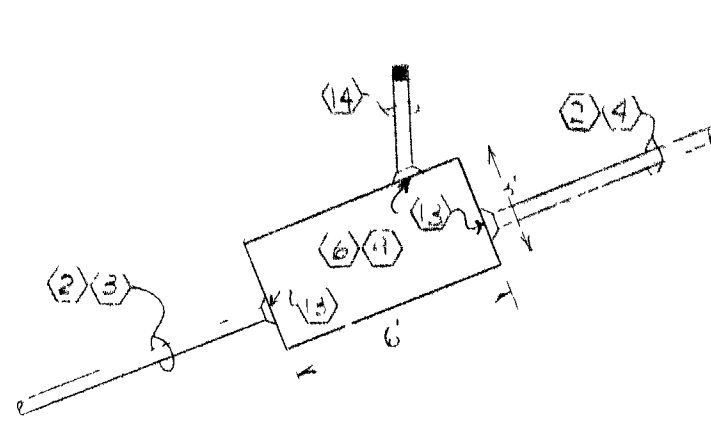
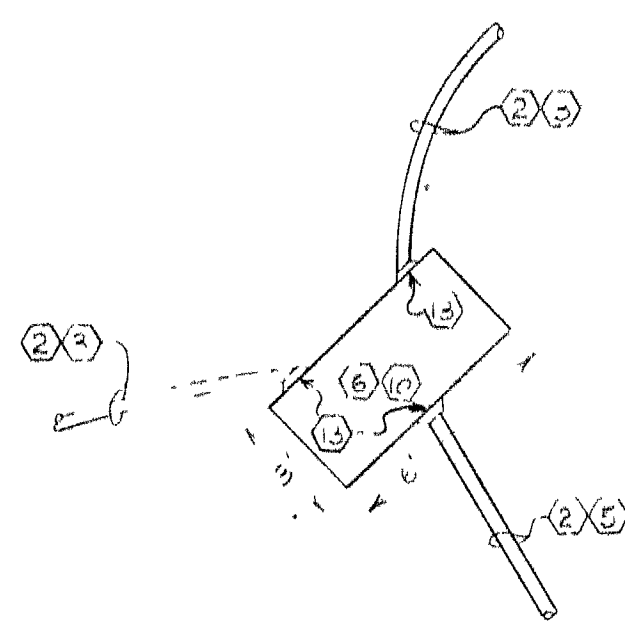


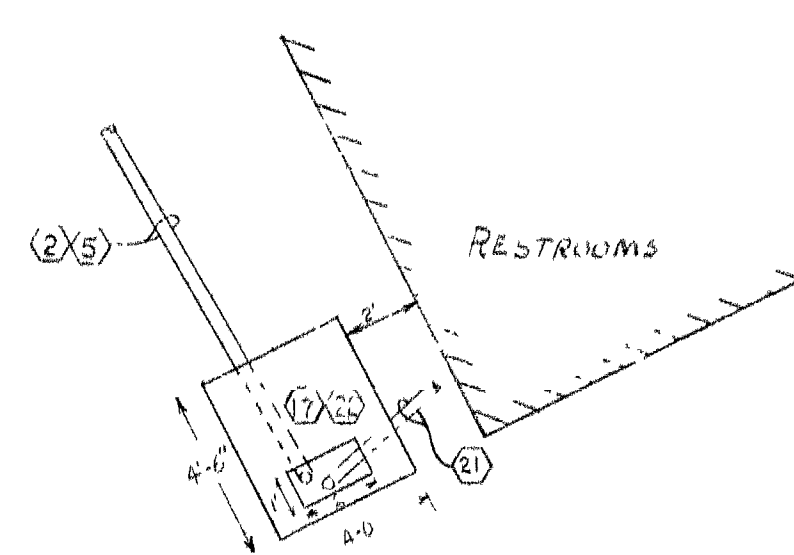
DETAIL "A"



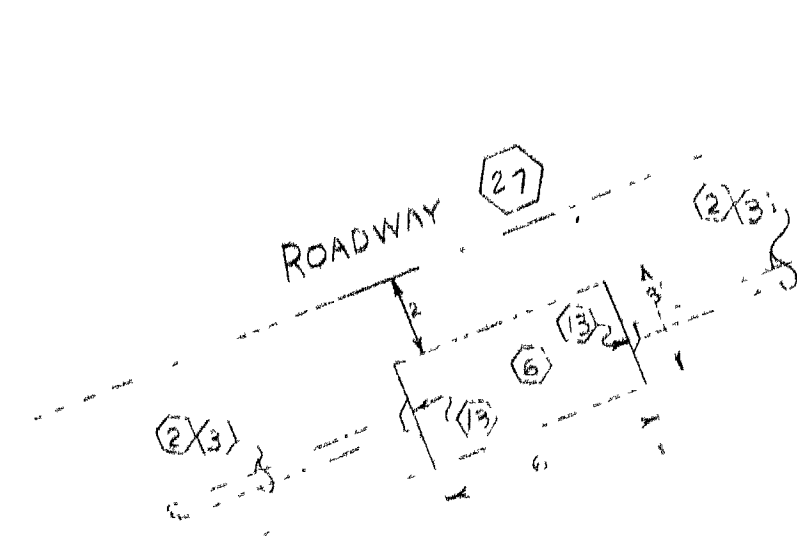
DETAIL "B"



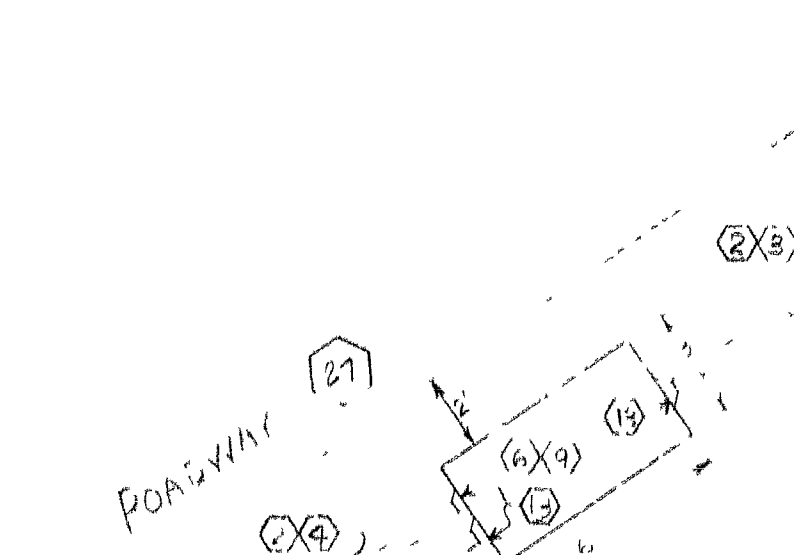
DETAIL "C"



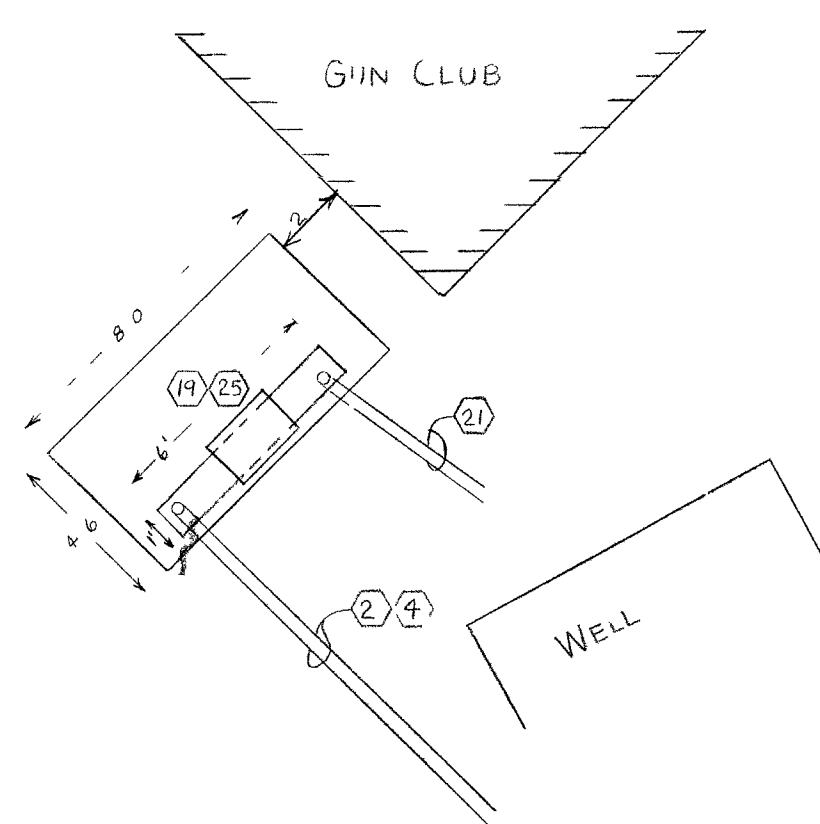
DETAIL "D"



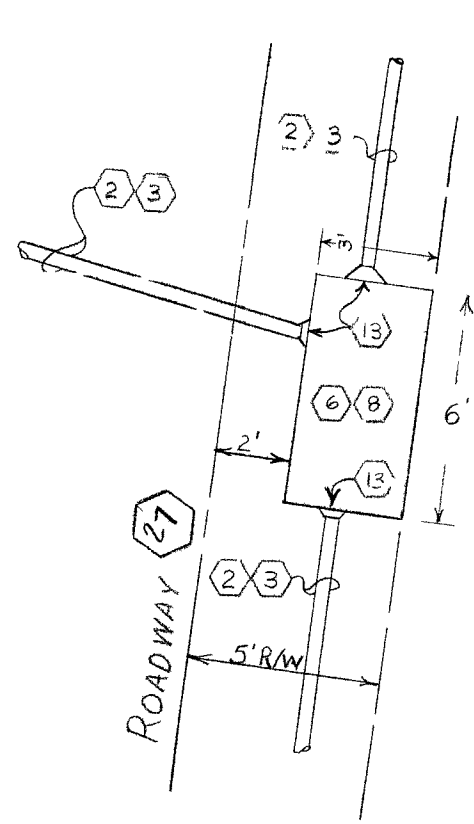
DETAIL "E"



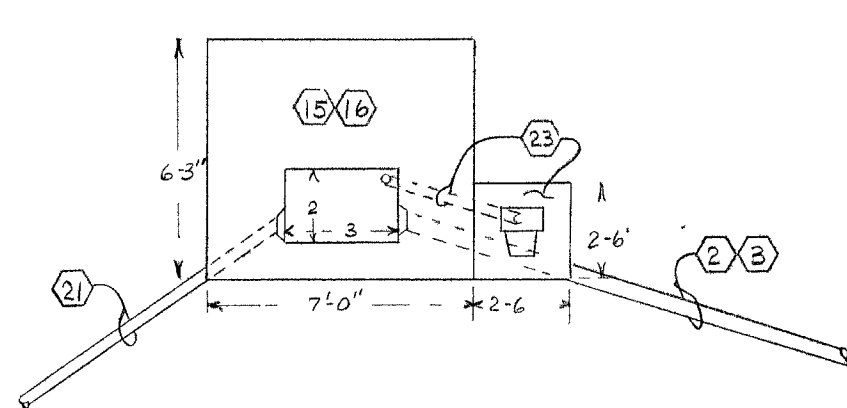
DETAIL "F"



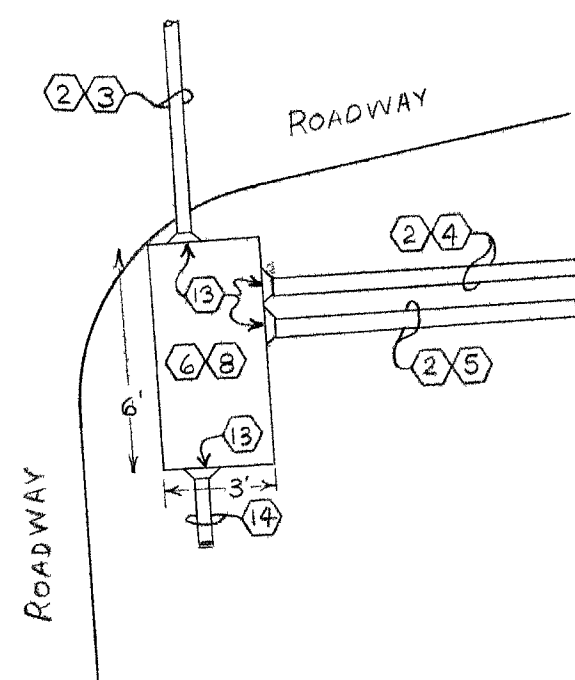
DETAIL "G"



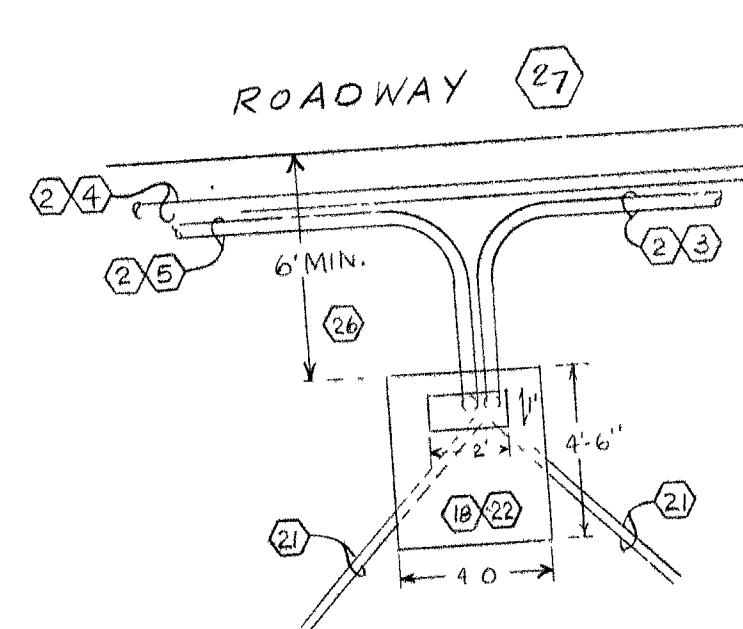
DETAIL "H"



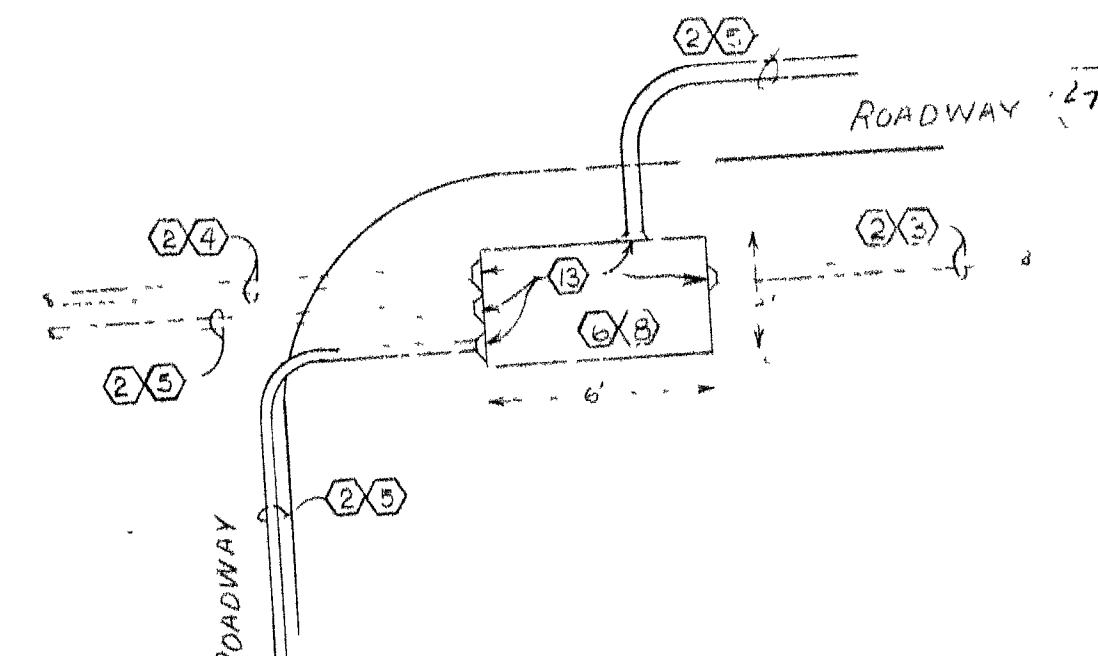
DETAIL "I"



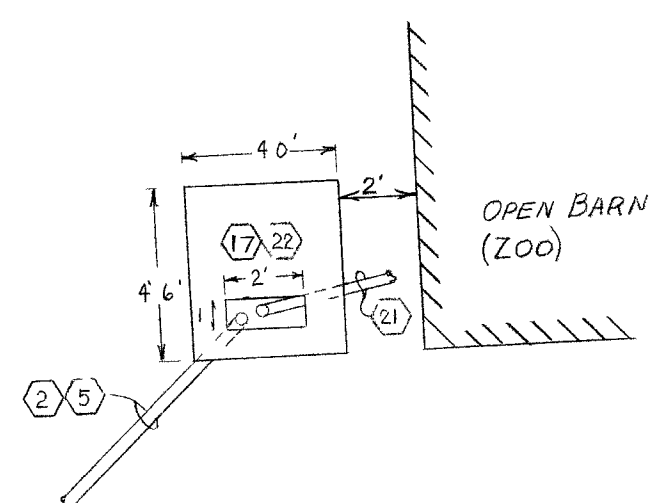
DETAIL "J"



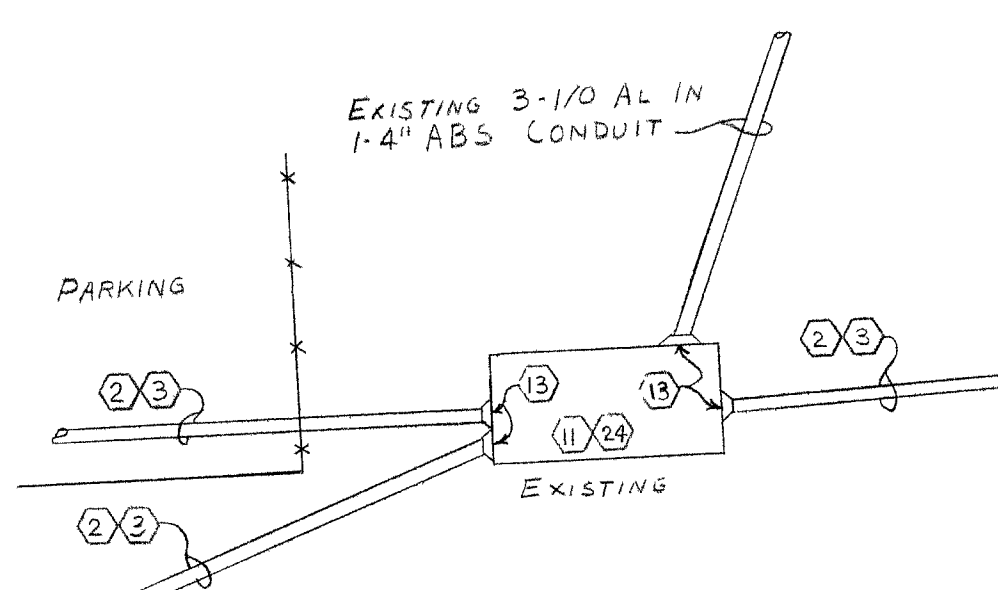
DETAIL "K"



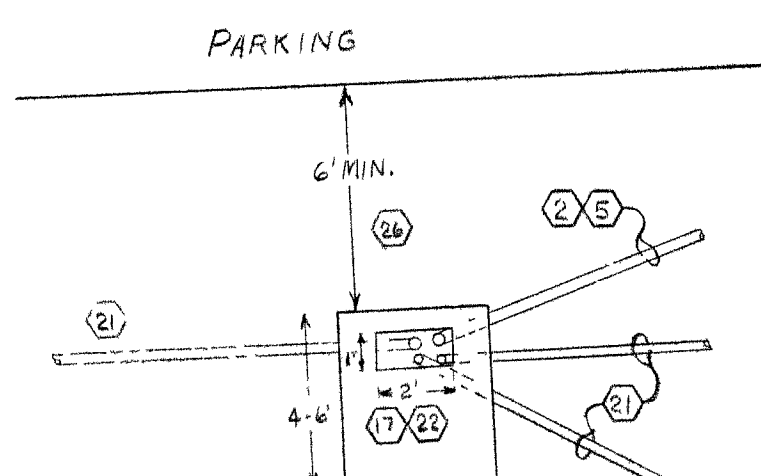
DETAIL "L"



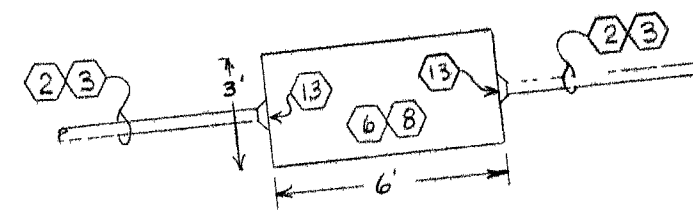
DETAIL "M"



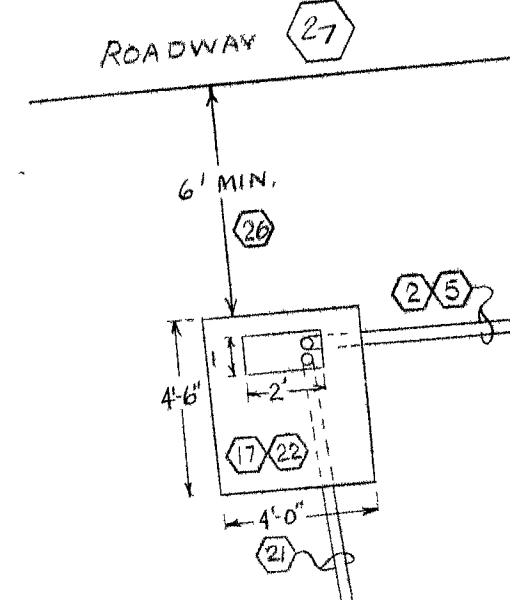
DETAIL "N"



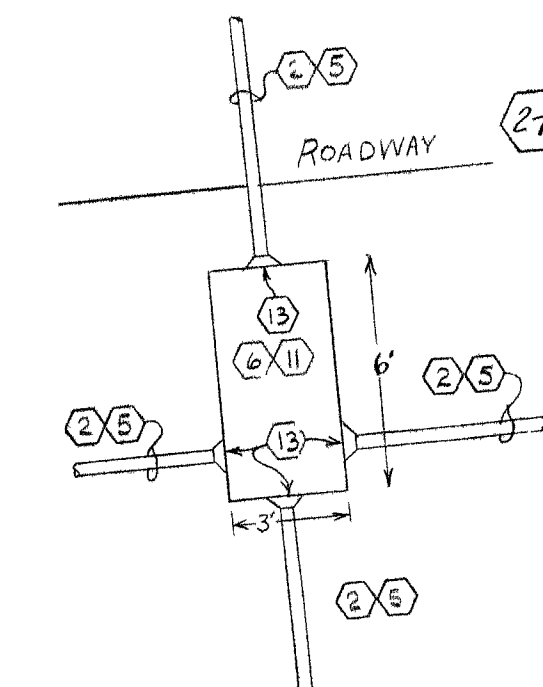
DETAIL "O"



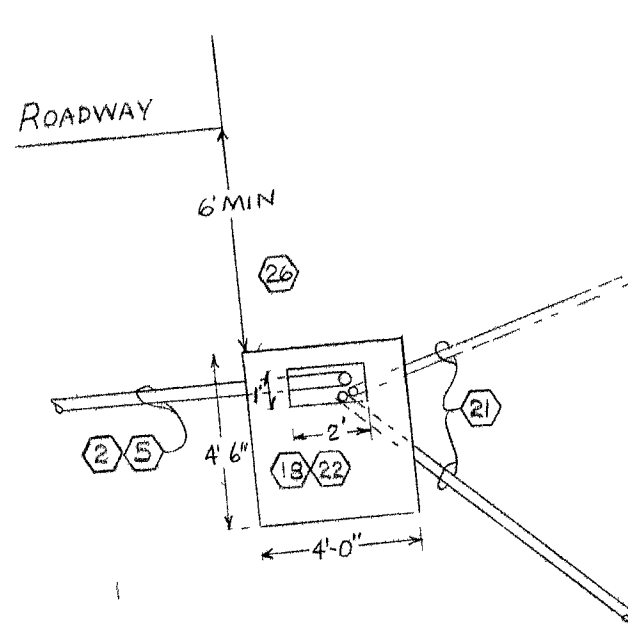
DETAIL "P"



DETAIL "Q"



DETAIL "R"



DETAIL "S"

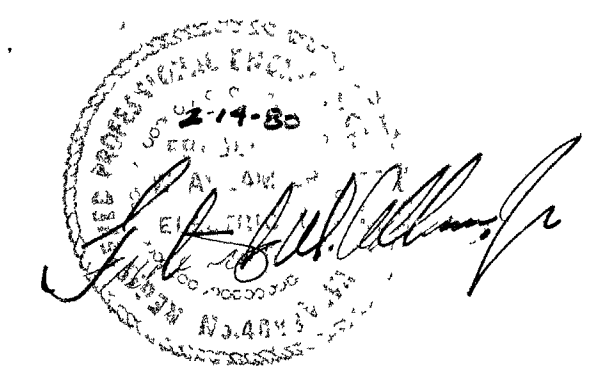
NOTES: (THIS SHEET ONLY)

- ①---INSTALL 3Ø PRIMARY POLE RISER PER N.P.CO. STD. 4 A-3/2 W/8Ø FUSES BY N.P.CO.
- ②---INSTALL 1-4" ABS COND. BY ELEC. CONTR.
- ③---INSTALL 3-1/2 AL-15KV CABLE BY N.P.CO.
- ④---INSTALL 2-1/2 AL-15KV CABLE BY N.P.CO.
- ⑤---INSTALL 1-1/2 AL-15KV CABLE BY N.P.CO.
- ⑥---INSTALL 3'x4'x4" DEEP PRIMARY PULLBOX PER N.P.CO. ENG. NO. 1502 W/ TRAFFIC COVER BY ELEC. CONTRACTOR.
- ⑦---INSTALL 1-4 WAY L.B. MODULE BY N.P.CO.
- ⑧---INSTALL 3-3 WAY L.B. MODULE BY N.P.CO.
- ⑨---INSTALL 2-3 WAY L.B. MODULE & 1-2 WAY L.B. MODULE BY N.P.CO.
- ⑩---INSTALL 1-3 WAY L.B. MODULE & 2-2 WAY L.B. MODULES BY N.P.CO.
- ⑪---INSTALL 1-4 WAY L.B. MODULE & 2-3 WAY L.B. MODULES BY N.P.CO.
- ⑫---PROVIDE 4Ø LENGTH FOR FUTURE SPICING.
- ⑬---TERMINATE ALL COND. RUNS W/ END BELLS & GROUT FLUSH TO WALLS BY ELEC. CONTRACTOR.
- ⑭---INSTALL 1-4" ABS COND. 3' PAST EDGE OF PRIMARY PULLBOX & STUB, CAP & MARK BY ELEC. CONTRACTOR.
- ⑮---INSTALL PAD PER N.P.CO. STD. 13-31 BY ELEC. CONTR.
- ⑯---INSTALL 50 KVA, 480Y/277V, 3Ø PM TRANSFORMER WITHOUT FUSES BY N.P.CO.
- ⑰---INSTALL 50 KVA, 120/240V, 1Ø PM TRANSFORMER BY N.P.CO.
- ⑱---INSTALL 75 KVA, 120/240V, 1Ø PM TRANSFORMER BY N.P.CO.
- ⑲---INSTALL 1-75 KVA & 1-50 KVA, 1Ø PM TRANSFORMERS CONN. FOR OPEN DELTA (120/240 V, 1Ø, 240V, 3Ø) BY N.P.CO.
- ⑳---INSTALL 1-20M ANCHOR, 2-G M.D.G. (25' LEAD) BY N.P.CO.
- ㉑---INSTALL SECONDARY SERVICE CABLE (AS REQD) BY ELEC. CONTRACTOR.
- ㉒---INSTALL PAD PER N.P.CO. STD. 13A-25 BY ELEC. CONTRACTOR.

- ㉓---INSTALL SECONDARY METERING PAD & METERING BOX BY ELEC. CONTR. PER N.P.CO. STD. 18-80. N.P.CO. TO INSTALL METER.
- ㉔---EXISTING 8'x4'x4" DEEP PRIMARY PULLBOX.
- ㉕---INSTALL PAD PER N.P.CO. STD. 13A-34 BY ELEC. CONTR.
- ㉖---6" MINIMUM DISTANCE IN BACK OF CURB MUST BE MAINTAINED AND BARRIERS - PER N.P.CO. STD. 11-2 WILL BE INSTALLED BY ELEC. CONTRACTOR.
- ㉗---VERIFY EXACT LOCATION OF NEW WATER SERVICE PIPING. MAINTAIN PROPER SPACING BETWEEN SYSTEMS AS N.P.CO. STANDARDS.
- ㉘---ELECTRICAL CONTRACTOR SHALL OBTAIN FROM N.P.CO. A CERTIFIED APPROVED SET OF DRAWINGS AND INSTALL ALL WORK IN ACCORDANCE WITH THE RULES & REGULATIONS. INCLUDE ALL N.P.CO. COSTS & CHARGES FOR THESE SERVICES IN THE ELECTRICAL BID.

COMMERCIAL NOTES:

- ㉙---ELECTRICAL CONTRACTOR TO PROVIDE & INSTALL ALL TRENCHING (W/ SELECT BACKFILL) PER N.P.CO. U.G. STD. TRANSFORMER PADS, PULLBOXES, HANDHOLES, & PROTECTIVE BARRIERS (IF REQD) PER N.P.CO. U.G. STD.
- ㉚---CONDUIT SYSTEM (W/ 1/2" PROPLENE PULLING CORD) & RGS BENDS (PVC COATED OR TAPE) PER N.P.CO. U.G. STD.
- ㉛---SECONDARY SERVICES TO MAINTAIN W/ ONE METER.
- ㉜---N.P.CO. TO PROVIDE & INSTALL PRIMARY POLE RISER.
- ㉝---PRIMARY CABLE.
- ㉞---TRANSFORMERS & CONNECTIONS TO THIS EQUIPMENT.
- ㉟---SECONDARY SERVICES TO MAINTAIN W/ MULTIPLE METERS.
- ㊱---FOR APPLICABLE NORTH ORIENTATION, REFERENCE SITE PLAN 10-B.



ELECTRICAL DETAILS

FLOYD LAMB STATE PARK @ TULE SPRINGS PHASE 1-B & 2

NEVADA DIVISION OF STATE PARKS

1395 HASKELL ST. - SUITE C - RENO, NEVADA - 89509 - 702.786.2590

LAS VEGAS, NEVADA

LAS VEGAS, NEVADA 89102 (702) 876-5374

CONSULTING ENGINEER SUITE 201

ARCHITECT-ASLA-LTD

JAMES H. GLOVER

101360

SHEET

U-9