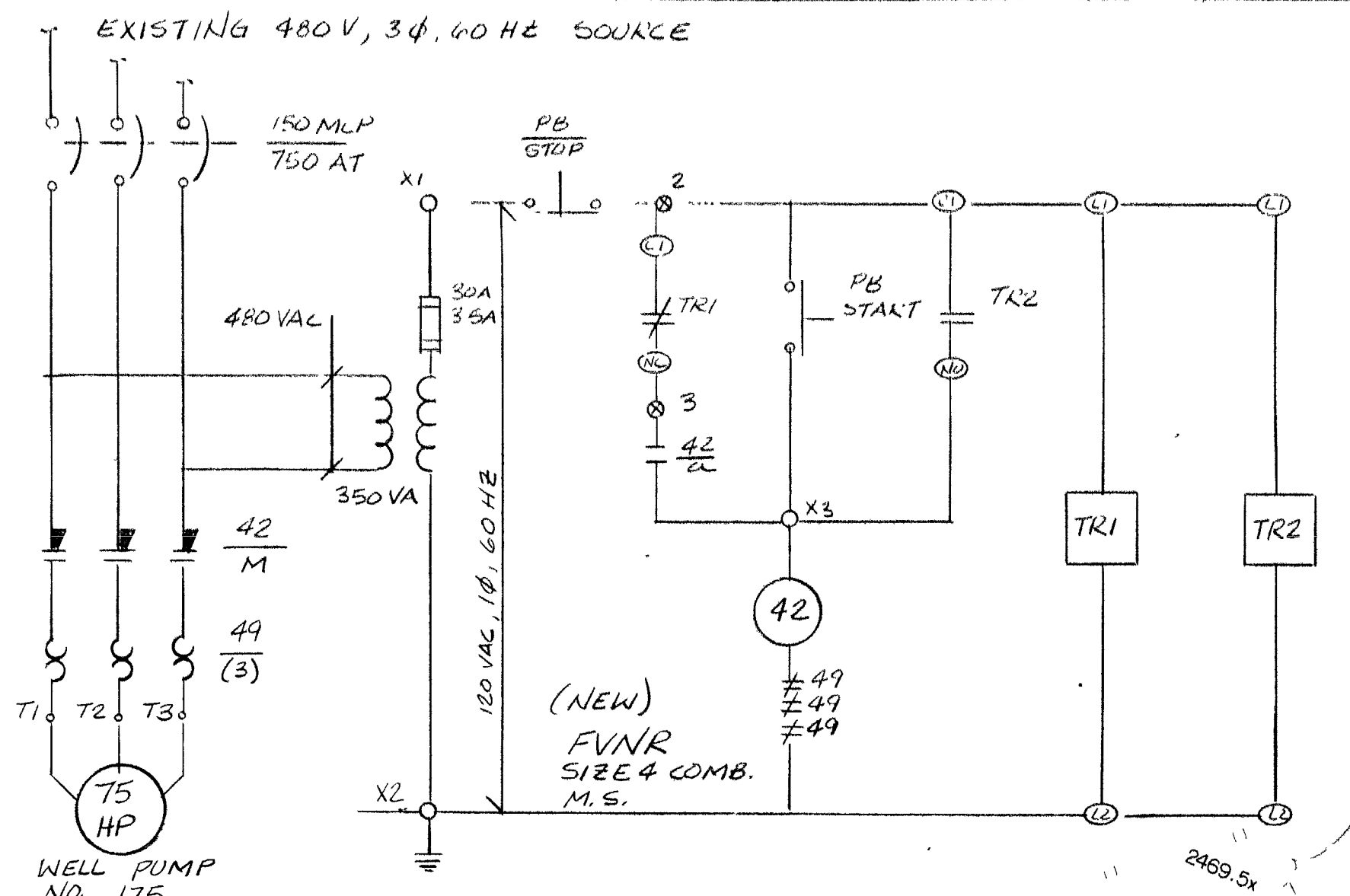


NOTES:

1. 3" PRIMARY POLE (USE PER N.P.CO. STD #A-3.2 N/307 FUSES 3" N.P.CO.)
2. 4" PVC CONDUIT BY ELECTRICAL CONTRACTOR
3. 3-10 AL - 15KV CABLES BY N.P.CO.
4. 1-10 AL - 15KV CABLES BY N.P.CO.
5. 1-10 AL - 15KV CABLES BY N.P.CO.
6. 3" X 1/2" DEEP PRIMARY TULL BOX PER (10) (REF U-10) STD. 1500 W/TRAFFIC COVER BY ELECTRICAL CONTRACTOR
7. 1-4 WAY L.B. MODULE BY N.P.CO.
8. 1-3 WAY L.B. MODULE BY N.P.CO.
9. 1-2 WAY L.B. MODULE 1/2 WAY L.B. MODULE BY N.P.CO.
10. 1-1 WAY L.B. MODULE 1/2 WAY L.B. MODULES BY N.P.CO.
11. 1-1 WAY L.B. MODULE 1/2 WAY L.B. MODULES BY N.P.CO.
12. PROVIDE SUFFICIENT LENGTH FOR FUTURE SPLICING.
13. TERMINATE ALL CONDUIT RUNS W/ENDBELLS & GROUT FLUSH TO WALLS BY ELECTRICAL CONTRACTOR
14. 4. ABS CONDUIT 3" DIA. EDGE OF PRIMARY PULLBOX & STUB, CAP, & MARK BY ELECTRICAL CONTRACTOR
15. PAD PER N.P.CO. STD. 15-51 BY ELECTRICAL CONTRACTOR
16. 150 KVA 480V/277V, 3Ø 1PM TRANSFORMER WITHOUT FUSES BY N.P.CO.
17. 75 KVA 120/240V, 1Ø 1PM TRANSFORMER BY N.P.CO.
18. 75 KVA 120/240V, 1Ø 1PM TRANSFORMER BY N.P.CO.
19. 175 KVA 1-150 KVA, 1Ø 1PM TRANSFORMERS CONNECTED FOR OPEN DELTA (120/240 V, 1Ø 240V, 3Ø) BY N.P.CO.
20. 1-ØM. ANCHOR, 2-ØM. Ø 6 (25%) BY N.P.CO.
21. SECONDARY SERVICE CABLE (AS REQ'D) BY ELECTRICAL CONTRACTOR
22. PAD PER N.P.CO. STD. 15A-85 BY ELECTRICAL CONTRACTOR
23. SECONDARY METERING PAD & METERING BOX BY ELECTRICAL CONTRACTOR
24. PER N.P.CO. STD. 15-80 (N.P.CO. TO INSTALL METER.)
25. EXISTING 3" X 1/2" PRIMARY PULLBOX
26. PAD PER N.P.CO. STD. 15A-34 BY ELECTRICAL CONTRACTOR
27. 4" MIN. DISTANCE IN BACK OF CURB SHALL BE MAINTAINED FOR BARRIERS PER N.P.CO. STD. 11-2
28. 2" PVC CONDUIT FOR TELEPHONE SYSTEM BY ELECTRICAL CONTRACTOR
29. 2" PVC CONDUIT FOR TELEPHONE SYSTEM BY ELECTRICAL CONTRACTOR
30. 2" PVC CONDUIT FOR TELEPHONE SYSTEM BY ELECTRICAL CONTRACTOR
31. 2" PVC CONDUIT FOR TELEPHONE SYSTEM BY ELECTRICAL CONTRACTOR
32. 2" PVC CONDUIT FOR TELEPHONE SYSTEM BY ELECTRICAL CONTRACTOR
33. 2" PVC CONDUIT FOR TELEPHONE SYSTEM BY ELECTRICAL CONTRACTOR
34. 2" PVC CONDUIT FOR TELEPHONE SYSTEM BY ELECTRICAL CONTRACTOR
35. 2" PVC CONDUIT FOR TELEPHONE SYSTEM BY ELECTRICAL CONTRACTOR
36. 2" PVC CONDUIT FOR TELEPHONE SYSTEM BY ELECTRICAL CONTRACTOR
37. 2" PVC CONDUIT FOR TELEPHONE SYSTEM BY ELECTRICAL CONTRACTOR
38. 2" PVC CONDUIT FOR TELEPHONE SYSTEM BY ELECTRICAL CONTRACTOR
39. 2" PVC CONDUIT FOR TELEPHONE SYSTEM BY ELECTRICAL CONTRACTOR
40. 2" PVC CONDUIT FOR TELEPHONE SYSTEM BY ELECTRICAL CONTRACTOR
41. 2" PVC CONDUIT FOR TELEPHONE SYSTEM BY ELECTRICAL CONTRACTOR
42. 2" PVC CONDUIT FOR TELEPHONE SYSTEM BY ELECTRICAL CONTRACTOR
43. 2" PVC CONDUIT FOR TELEPHONE SYSTEM BY ELECTRICAL CONTRACTOR
44. 2" PVC CONDUIT FOR TELEPHONE SYSTEM BY ELECTRICAL CONTRACTOR
45. 2" PVC CONDUIT FOR TELEPHONE SYSTEM BY ELECTRICAL CONTRACTOR
46. 2" PVC CONDUIT FOR TELEPHONE SYSTEM BY ELECTRICAL CONTRACTOR
47. 2" PVC CONDUIT FOR TELEPHONE SYSTEM BY ELECTRICAL CONTRACTOR
48. 2" PVC CONDUIT FOR TELEPHONE SYSTEM BY ELECTRICAL CONTRACTOR
49. 2" PVC CONDUIT FOR TELEPHONE SYSTEM BY ELECTRICAL CONTRACTOR
50. 2" PVC CONDUIT FOR TELEPHONE SYSTEM BY ELECTRICAL CONTRACTOR
51. 2" PVC CONDUIT FOR TELEPHONE SYSTEM BY ELECTRICAL CONTRACTOR
52. 2" PVC CONDUIT FOR TELEPHONE SYSTEM BY ELECTRICAL CONTRACTOR
53. 2" PVC CONDUIT FOR TELEPHONE SYSTEM BY ELECTRICAL CONTRACTOR
54. 2" PVC CONDUIT FOR TELEPHONE SYSTEM BY ELECTRICAL CONTRACTOR
55. 2" PVC CONDUIT FOR TELEPHONE SYSTEM BY ELECTRICAL CONTRACTOR
56. 2" PVC CONDUIT FOR TELEPHONE SYSTEM BY ELECTRICAL CONTRACTOR
57. 2" PVC CONDUIT FOR TELEPHONE SYSTEM BY ELECTRICAL CONTRACTOR
58. 2" PVC CONDUIT FOR TELEPHONE SYSTEM BY ELECTRICAL CONTRACTOR
59. 2" PVC CONDUIT FOR TELEPHONE SYSTEM BY ELECTRICAL CONTRACTOR
60. 2" PVC CONDUIT FOR TELEPHONE SYSTEM BY ELECTRICAL CONTRACTOR
61. 2" PVC CONDUIT FOR TELEPHONE SYSTEM BY ELECTRICAL CONTRACTOR
62. 2" PVC CONDUIT FOR TELEPHONE SYSTEM BY ELECTRICAL CONTRACTOR
63. 2" PVC CONDUIT FOR TELEPHONE SYSTEM BY ELECTRICAL CONTRACTOR
64. 2" PVC CONDUIT FOR TELEPHONE SYSTEM BY ELECTRICAL CONTRACTOR
65. 2" PVC CONDUIT FOR TELEPHONE SYSTEM BY ELECTRICAL CONTRACTOR
66. 2" PVC CONDUIT FOR TELEPHONE SYSTEM BY ELECTRICAL CONTRACTOR
67. 2" PVC CONDUIT FOR TELEPHONE SYSTEM BY ELECTRICAL CONTRACTOR
68. 2" PVC CONDUIT FOR TELEPHONE SYSTEM BY ELECTRICAL CONTRACTOR
69. 2" PVC CONDUIT FOR TELEPHONE SYSTEM BY ELECTRICAL CONTRACTOR
70. 2" PVC CONDUIT FOR TELEPHONE SYSTEM BY ELECTRICAL CONTRACTOR
71. 2" PVC CONDUIT FOR TELEPHONE SYSTEM BY ELECTRICAL CONTRACTOR
72. 2" PVC CONDUIT FOR TELEPHONE SYSTEM BY ELECTRICAL CONTRACTOR
73. 2" PVC CONDUIT FOR TELEPHONE SYSTEM BY ELECTRICAL CONTRACTOR
74. 2" PVC CONDUIT FOR TELEPHONE SYSTEM BY ELECTRICAL CONTRACTOR
75. 2" PVC CONDUIT FOR TELEPHONE SYSTEM BY ELECTRICAL CONTRACTOR
76. 2" PVC CONDUIT FOR TELEPHONE SYSTEM BY ELECTRICAL CONTRACTOR
77. 2" PVC CONDUIT FOR TELEPHONE SYSTEM BY ELECTRICAL CONTRACTOR
78. 2" PVC CONDUIT FOR TELEPHONE SYSTEM BY ELECTRICAL CONTRACTOR
79. 2" PVC CONDUIT FOR TELEPHONE SYSTEM BY ELECTRICAL CONTRACTOR
80. 2" PVC CONDUIT FOR TELEPHONE SYSTEM BY ELECTRICAL CONTRACTOR
81. 2" PVC CONDUIT FOR TELEPHONE SYSTEM BY ELECTRICAL CONTRACTOR
82. 2" PVC CONDUIT FOR TELEPHONE SYSTEM BY ELECTRICAL CONTRACTOR
83. 2" PVC CONDUIT FOR TELEPHONE SYSTEM BY ELECTRICAL CONTRACTOR
84. 2" PVC CONDUIT FOR TELEPHONE SYSTEM BY ELECTRICAL CONTRACTOR
85. 2" PVC CONDUIT FOR TELEPHONE SYSTEM BY ELECTRICAL CONTRACTOR
86. 2" PVC CONDUIT FOR TELEPHONE SYSTEM BY ELECTRICAL CONTRACTOR
87. 2" PVC CONDUIT FOR TELEPHONE SYSTEM BY ELECTRICAL CONTRACTOR
88. 2" PVC CONDUIT FOR TELEPHONE SYSTEM BY ELECTRICAL CONTRACTOR
89. 2" PVC CONDUIT FOR TELEPHONE SYSTEM BY ELECTRICAL CONTRACTOR
90. 2" PVC CONDUIT FOR TELEPHONE SYSTEM BY ELECTRICAL CONTRACTOR
91. 2" PVC CONDUIT FOR TELEPHONE SYSTEM BY ELECTRICAL CONTRACTOR
92. 2" PVC CONDUIT FOR TELEPHONE SYSTEM BY ELECTRICAL CONTRACTOR
93. 2" PVC CONDUIT FOR TELEPHONE SYSTEM BY ELECTRICAL CONTRACTOR
94. 2" PVC CONDUIT FOR TELEPHONE SYSTEM BY ELECTRICAL CONTRACTOR
95. 2" PVC CONDUIT FOR TELEPHONE SYSTEM BY ELECTRICAL CONTRACTOR
96. 2" PVC CONDUIT FOR TELEPHONE SYSTEM BY ELECTRICAL CONTRACTOR
97. 2" PVC CONDUIT FOR TELEPHONE SYSTEM BY ELECTRICAL CONTRACTOR
98. 2" PVC CONDUIT FOR TELEPHONE SYSTEM BY ELECTRICAL CONTRACTOR
99. 2" PVC CONDUIT FOR TELEPHONE SYSTEM BY ELECTRICAL CONTRACTOR
100. 2" PVC CONDUIT FOR TELEPHONE SYSTEM BY ELECTRICAL CONTRACTOR



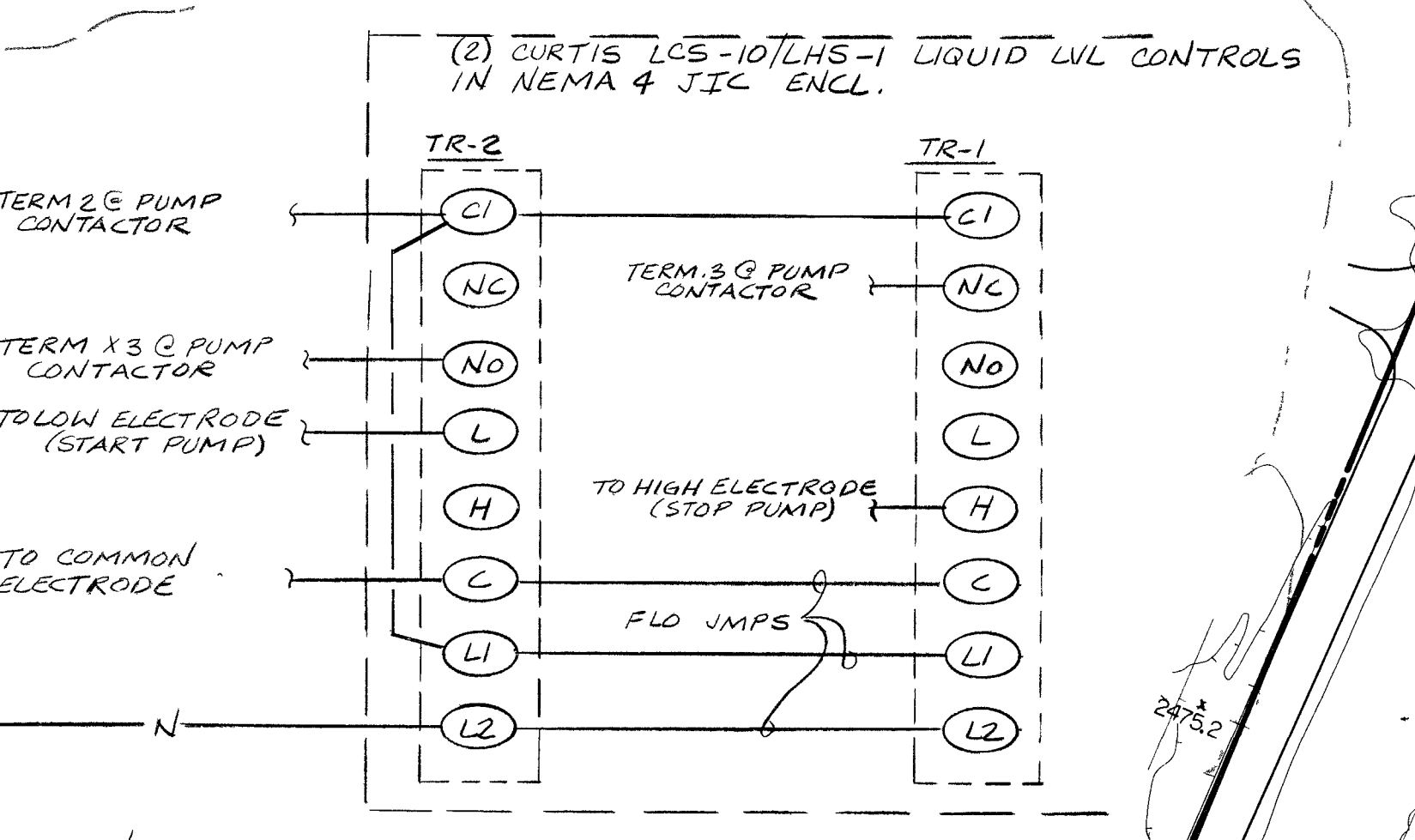
ELEM. DIAGRAM-TULE SPRINGS LAKE FILL PUMP

FILL PUMP (AKA WELL PUMP NO. 175)

NO SCALE

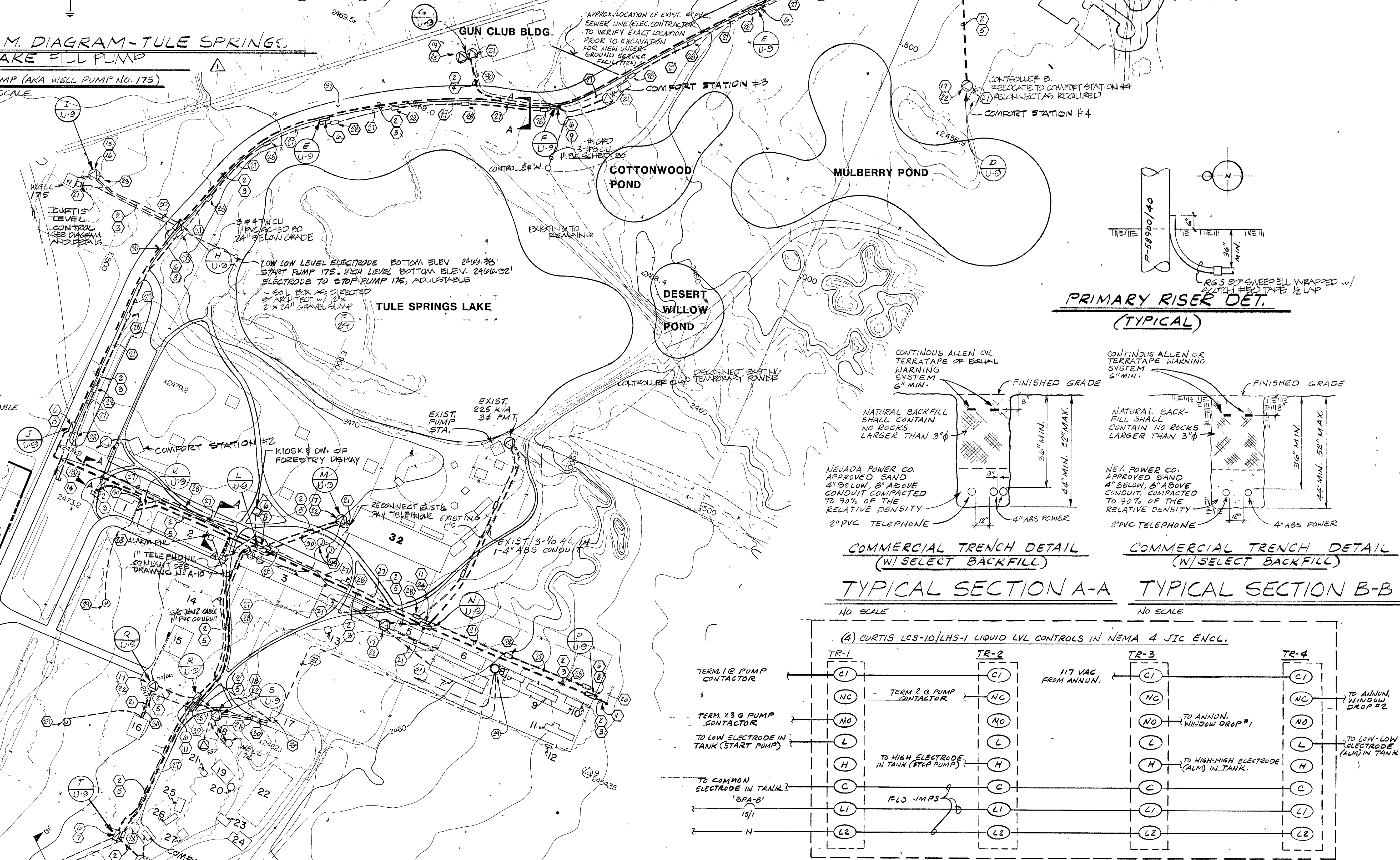
ELECTRICAL CONTRACTOR TO PROVIDE & INSTALL

- a) ALL TRENCHING (W/SELECT BACKFILL) PER N.P.CO. U.G. STD.
 - b) TRANSFORMER PADS, PULL BOXES, HANDHOLES, & PROTECTIVE BARRIERS (AS REQUIRED) PER N.P.CO. U.G. STD.
 - c) CONDUIT & DUCT SYSTEMS (W/1/2" PROPYLENE PULLING COAD) & 90° BENDS (PVC COATED OR TAPER) PER N.P.CO. U.G. STD.
 - d) SECONDARY SERVICES TO MAINS W/ONE METER.
- N.P.CO. TO PROVIDE & INSTALL**
- a) ALL PRIMARY POLE RISERS & ACCESSORIES
 - b) PRIMARY CABLE & ACCESSORIES
 - c) TRANSFORMERS & TERMINATIONS TO ALL N.P.CO. SUPPLIED EQUIPMENT.
 - d) SECONDARY SERVICES TO MAINS W/MULTIPLE METERS.
- IT SHALL BE THE RESPONSIBILITY OF THE ELECTRICAL CONTRACTOR TO DETERMINE THE EXACT LOCATION OF ALL POWER & TELEPHONE COMPANY PULL BOXES WITH THE APPLICABLE UTILITY COMPANY AND THE LANDSCAPE ARCHITECT PRIOR TO ACTUAL EXCAVATION AND/OR ROUGH-IN.
- 1) LOCATE TRENCH ON NORTHEAST EDGE OF EXISTING GRAVEL ROAD (WITHIN ROAD) ON A 4" WATER LINE IS LOCATED ON SOUTHEAST EDGE OF ROAD.
 - 2) CONDUIT IS UNDER EXISTING CREEK, INSTALL AT 50" MIN. DEPTH, ENCASE CONDUIT IN 3" CONC. (ALL AROUND) FOR A DISTANCE OF 4' EITHER SIDE OF CENTERLINE OF CREEK BED. DUPLEX SEWAGE ELECTOR SHP 240V 3Ø.



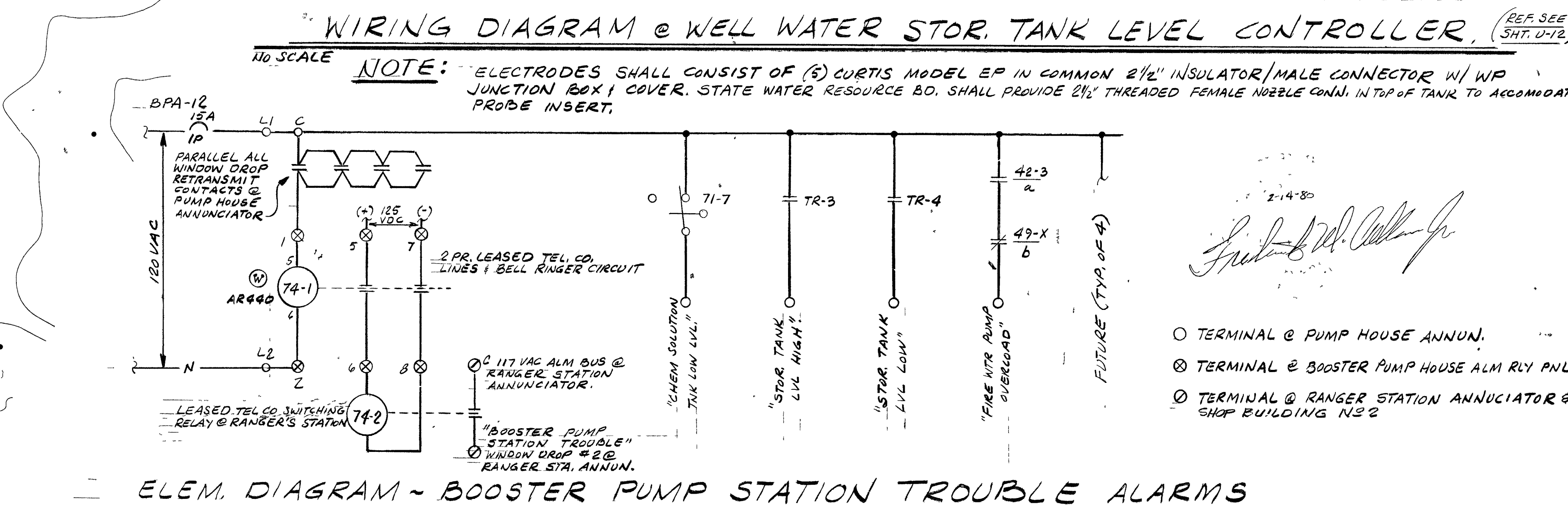
WIRING DIAGRAM FILL PUMP 175

NOTE: ELECTRODES SHALL CONSIST OF (3) CURTIS MODEL EP IN COMMON 2 1/2" INSULATOR/MALE CONNECTOR W/ WP JUNCTION BOX COVER. STATE WATER RESOURCE BD. SHALL PROVIDE 2 1/2" THREADED FEMALE NOZZLE CONN. IN TOP OF ANCHORED SETTLING WELL TO ACCOMMODATE



WIRING DIAGRAM @ WELL WATER STOR. TANK LEVEL CONTROLLER

NO SCALE



ELEM. DIAGRAM - BOOSTER PUMP STATION TROUBLE ALARMS

ELECTRICAL SITE PLAN

CHARLES SALADINO-LANDSCAPE ARCHITECT-ASLA-LTD

FLOYD LAMB STATE PARK @ TULE SPRINGS

PHASE 1-B & 2

1395 HASKELL ST. - SUITE C - RENO, NEVADA - 89509 - 702-786-2560

NEVADA DIVISION OF STATE PARKS

U-8