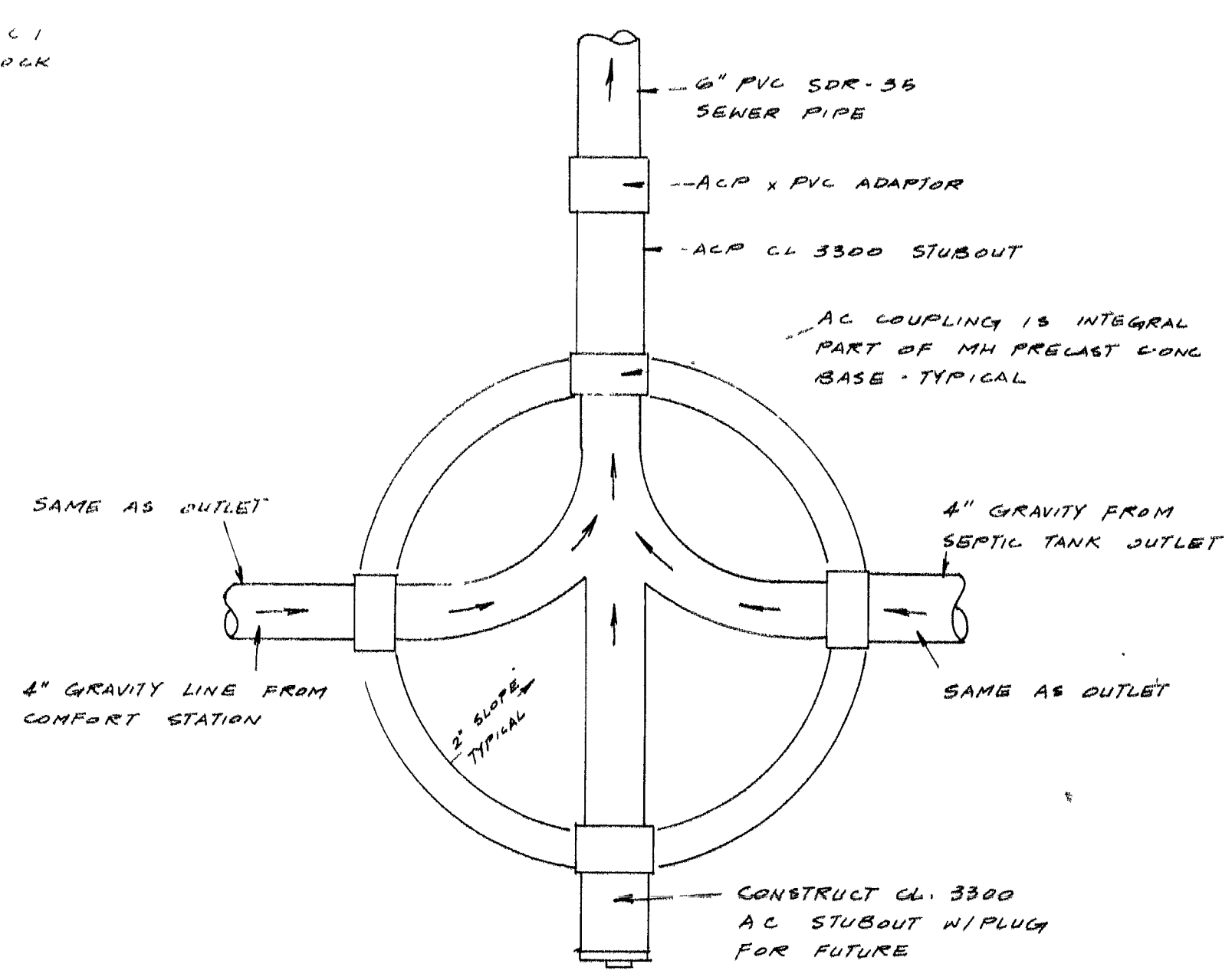
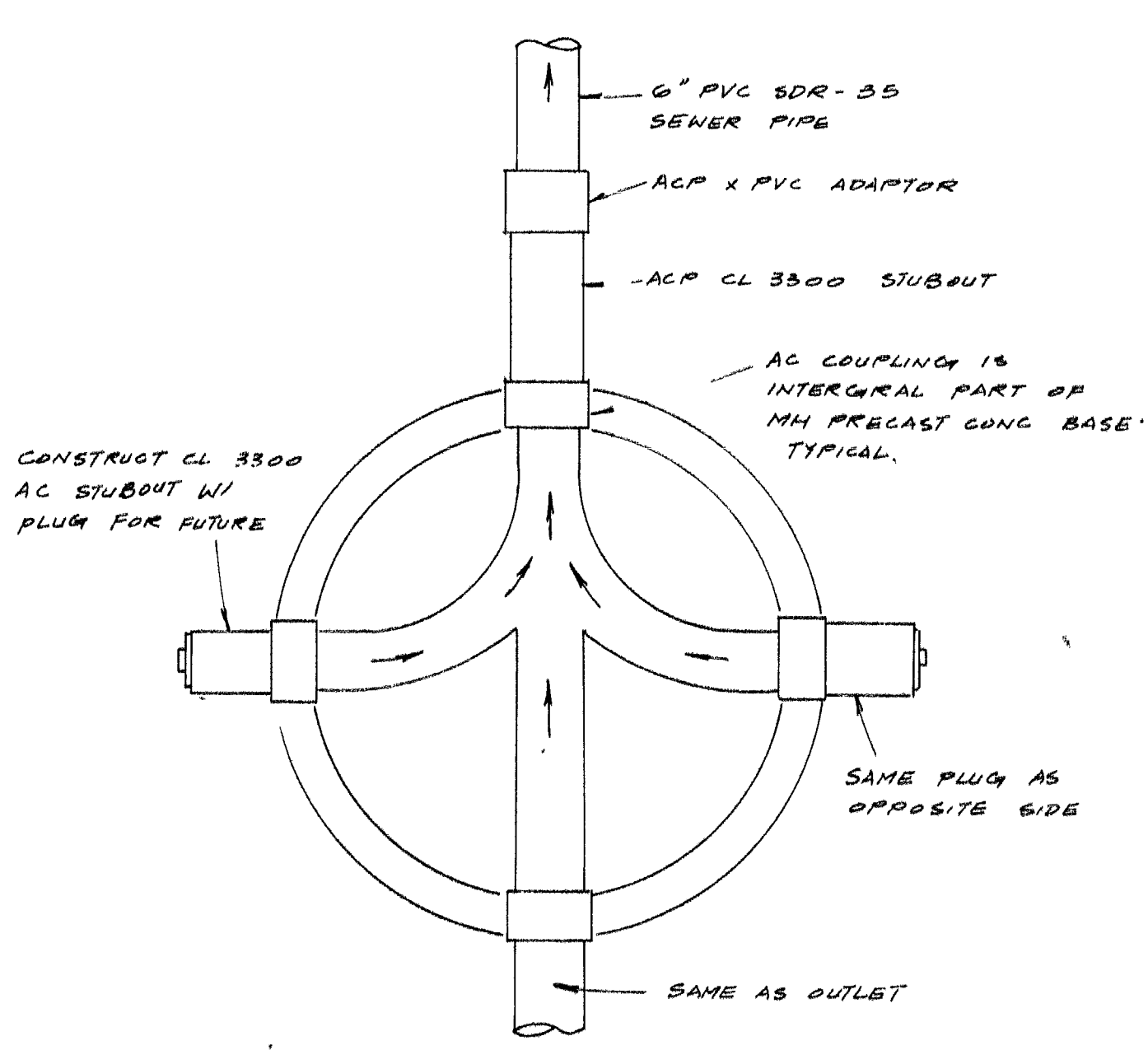


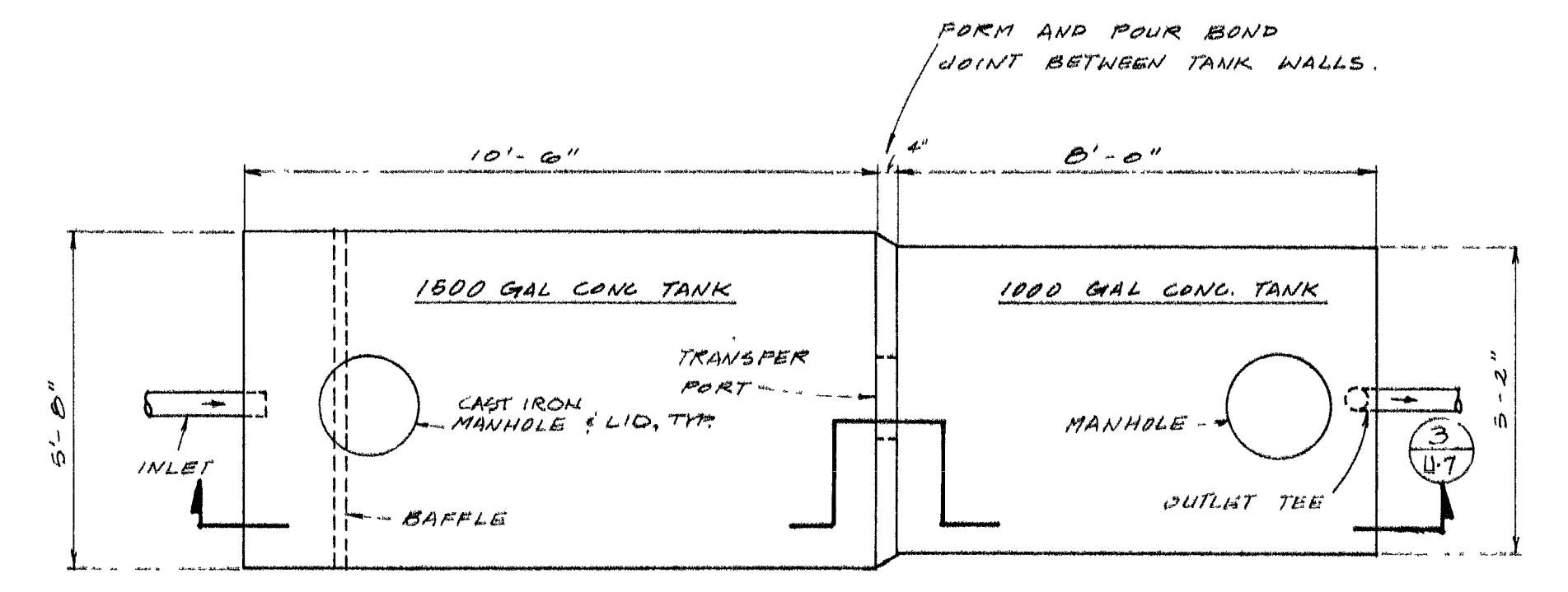
TYPICAL MANHOLE SECTION
N.T.S.



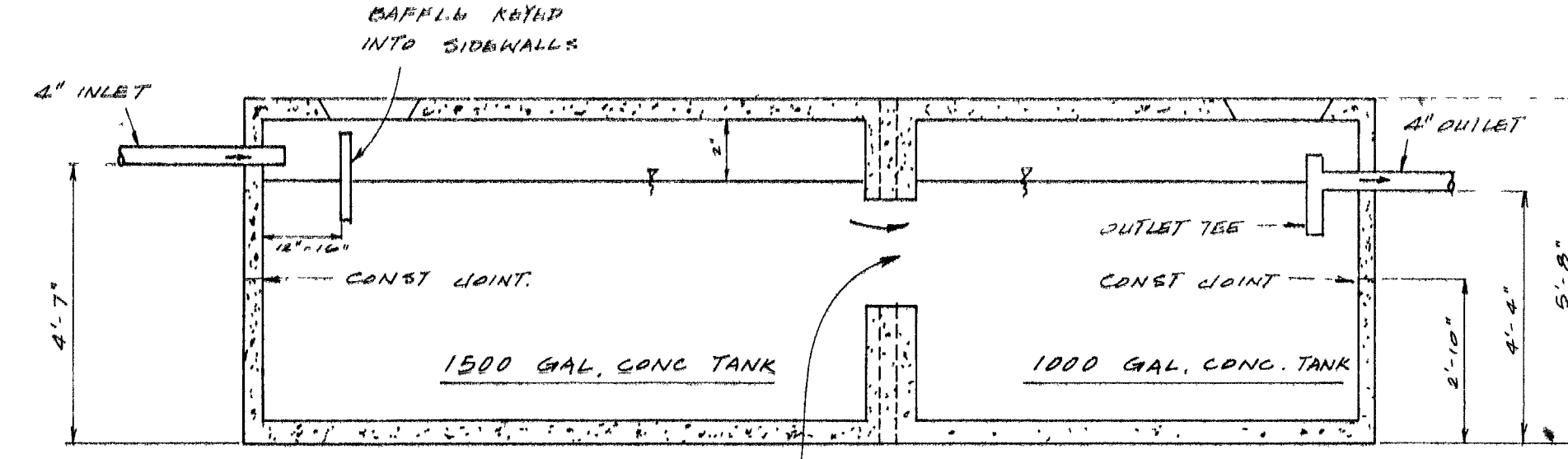
PLAN-MANHOLE NO. 1
N.T.S.



PLAN-MANHOLE NO. 2
N.T.S.

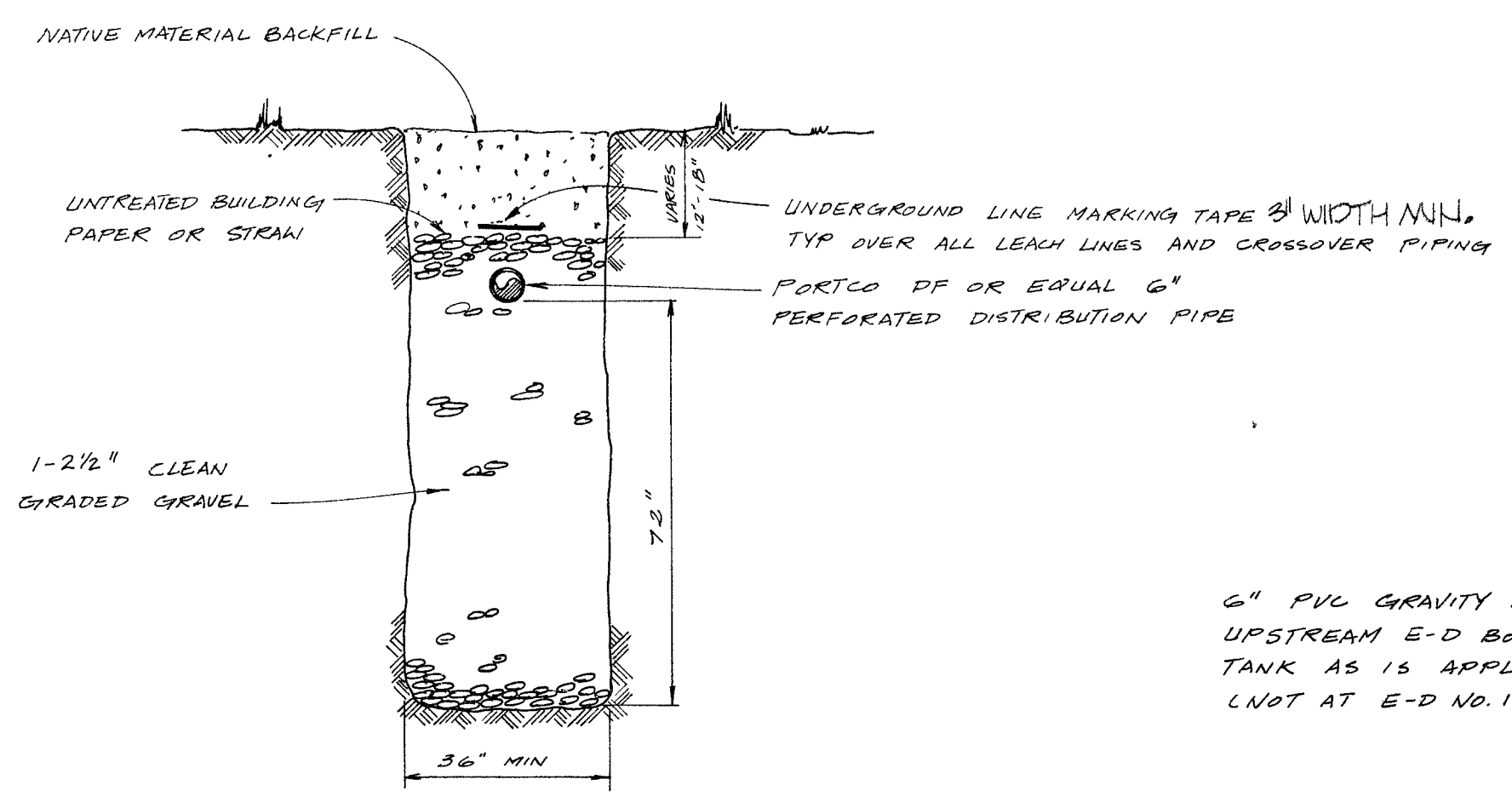


PLAN - SEPTIC TANK
SCALE 3/8" = 1'-0"

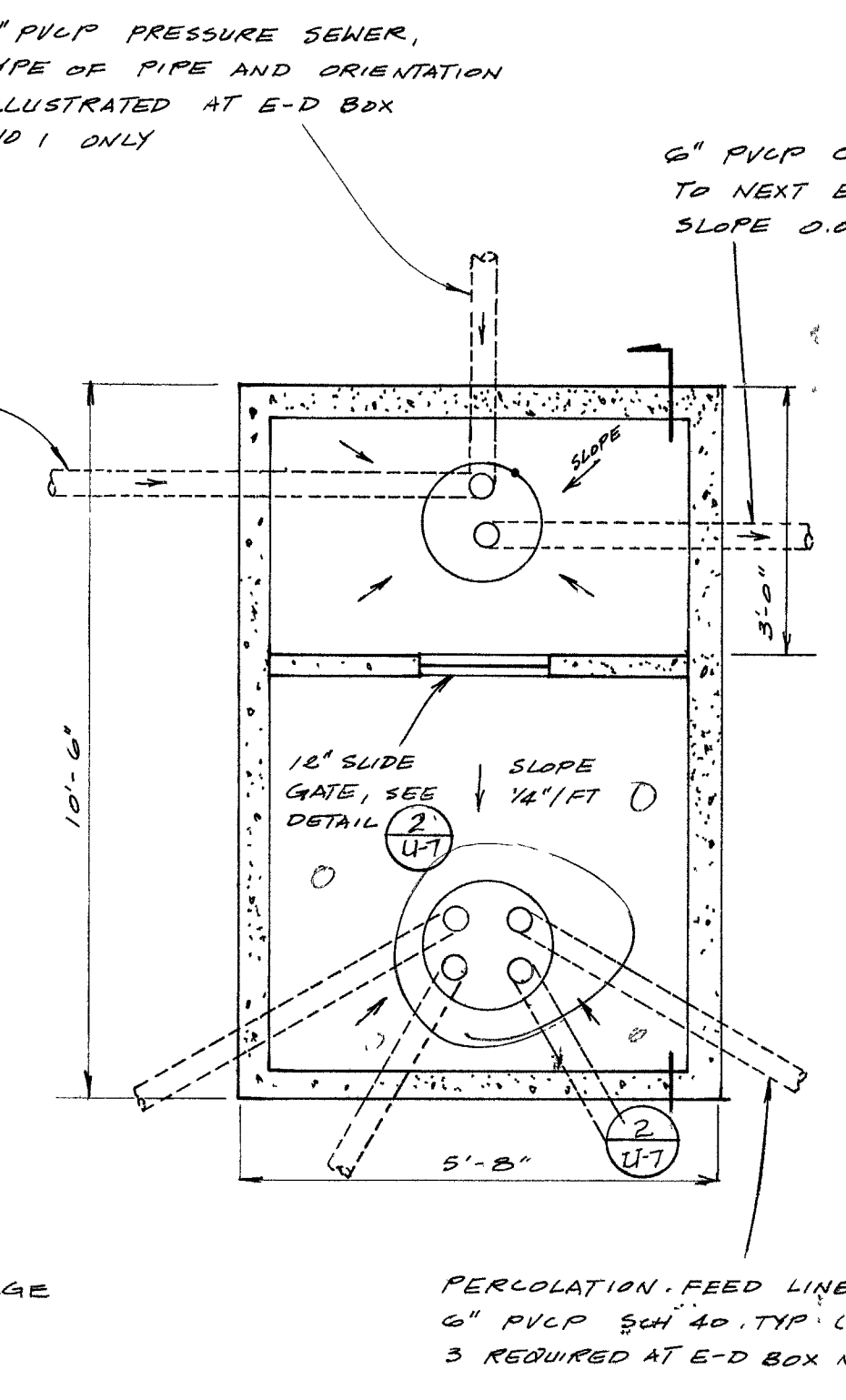


SECTION - CONCRETE SEPTIC TANK
SCALE 3/8" = 1'-0"

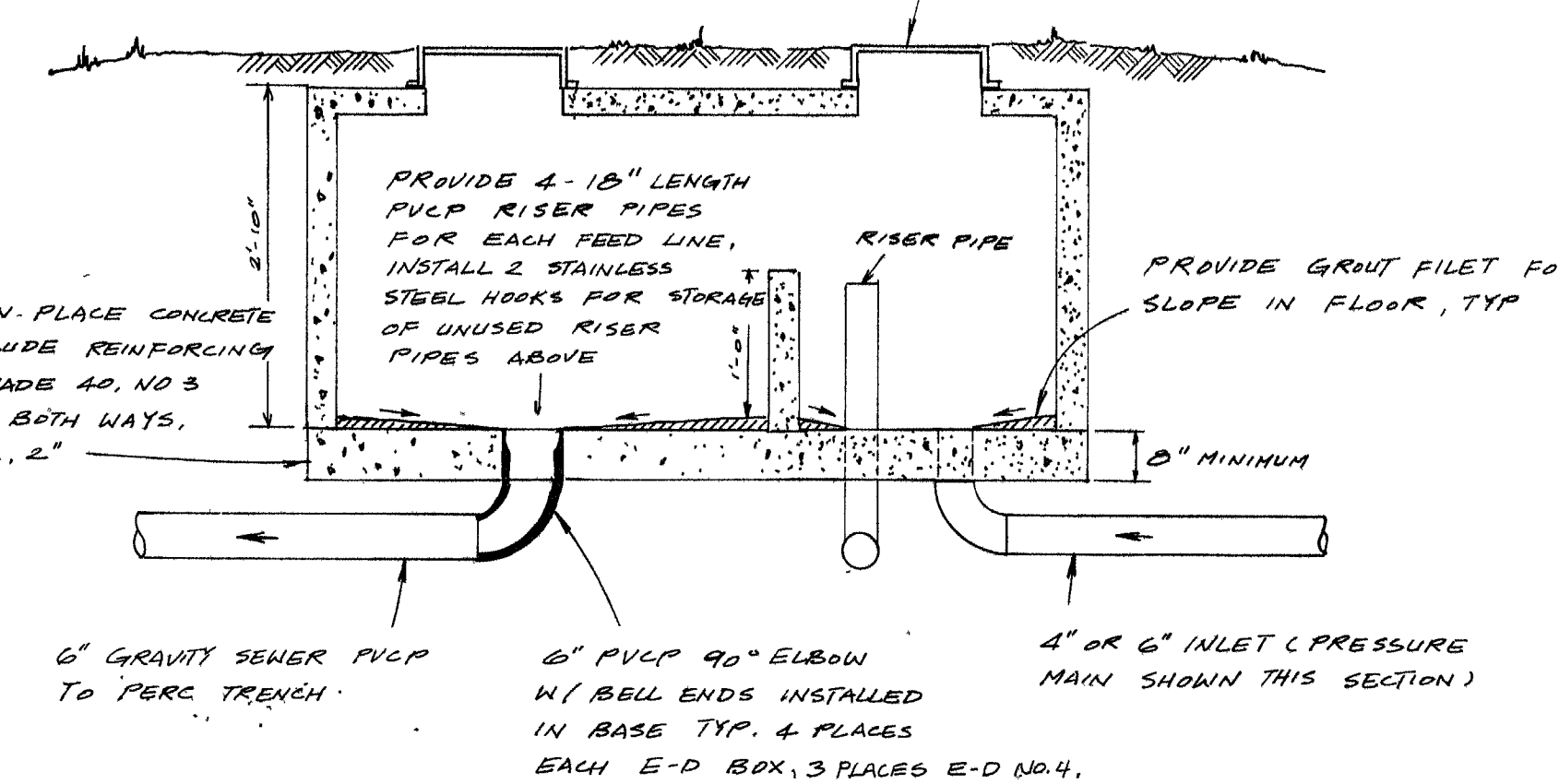
- NOTES
- 1 CONTRACTOR SHALL SUBMIT SHOP DRAWINGS OF TANKS HE INTENDS TO USE FOR APPROVAL PRIOR TO START OF CONSTRUCTION.
 - 2 SEPTIC TANKS SHALL NOT BE INSTALLED WITHIN 5 FEET OF ANY BUILDING.
 - 3 CONTRACTOR SHALL SET FOUR 4" X 4" REDWOOD POST MARKERS ADJACENT TO INLET MANHOLE.
 - 4 CONSTRUCTION JOINTS AND COMPLETED TANK SHALL BE WATER TIGHT.
 - 5 TANK VOLUME REQUIREMENTS LESS THAN 2800 GALLONS MAY BE ACCOMPLISHED WITH ONE SINGLE TANK UNIT. PLAN & SECTION ABOVE ILLUSTRATES 2800 CAPACITY.



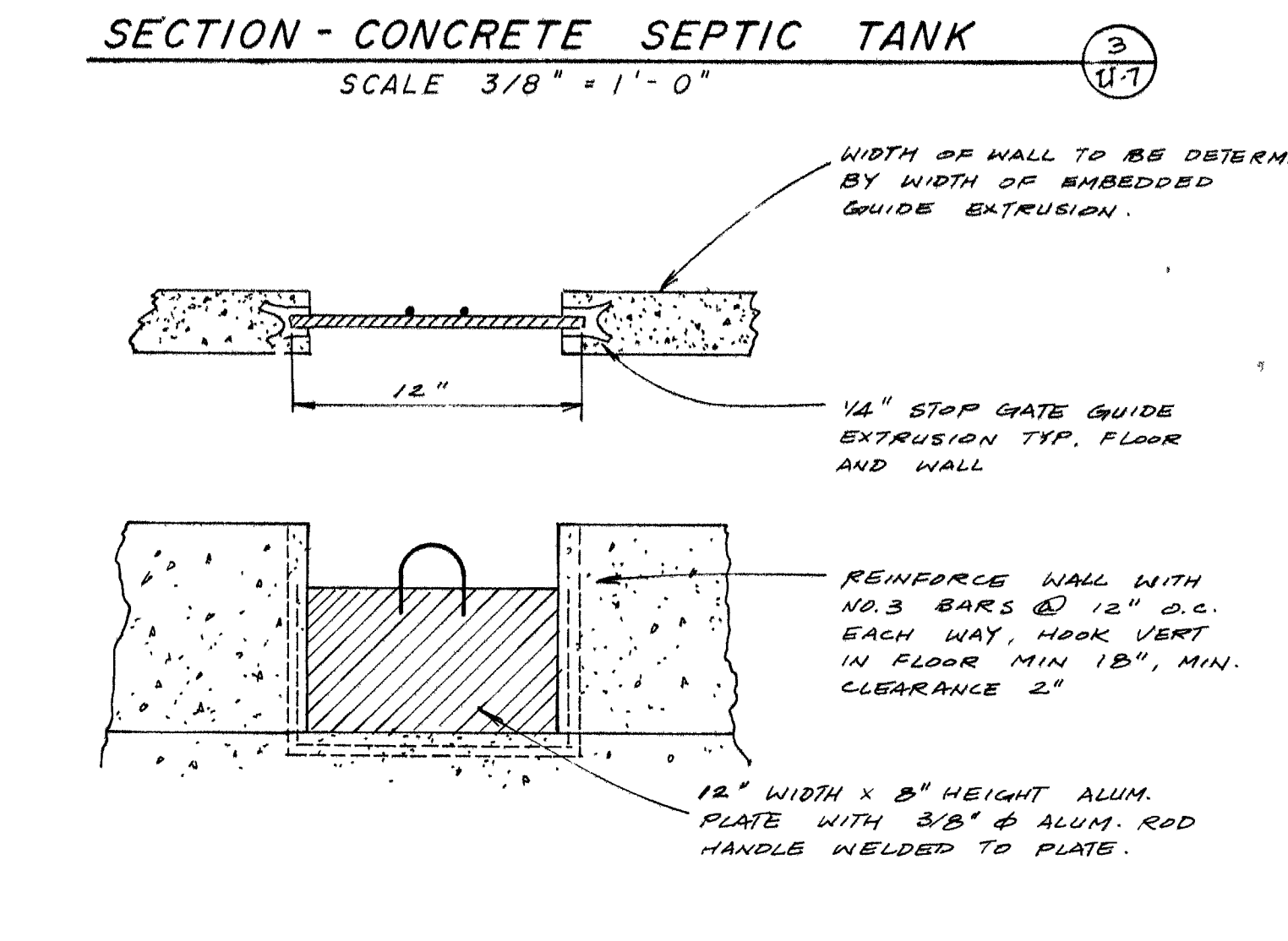
DETAIL - PERCOLATION TRENCH
N.T.S.



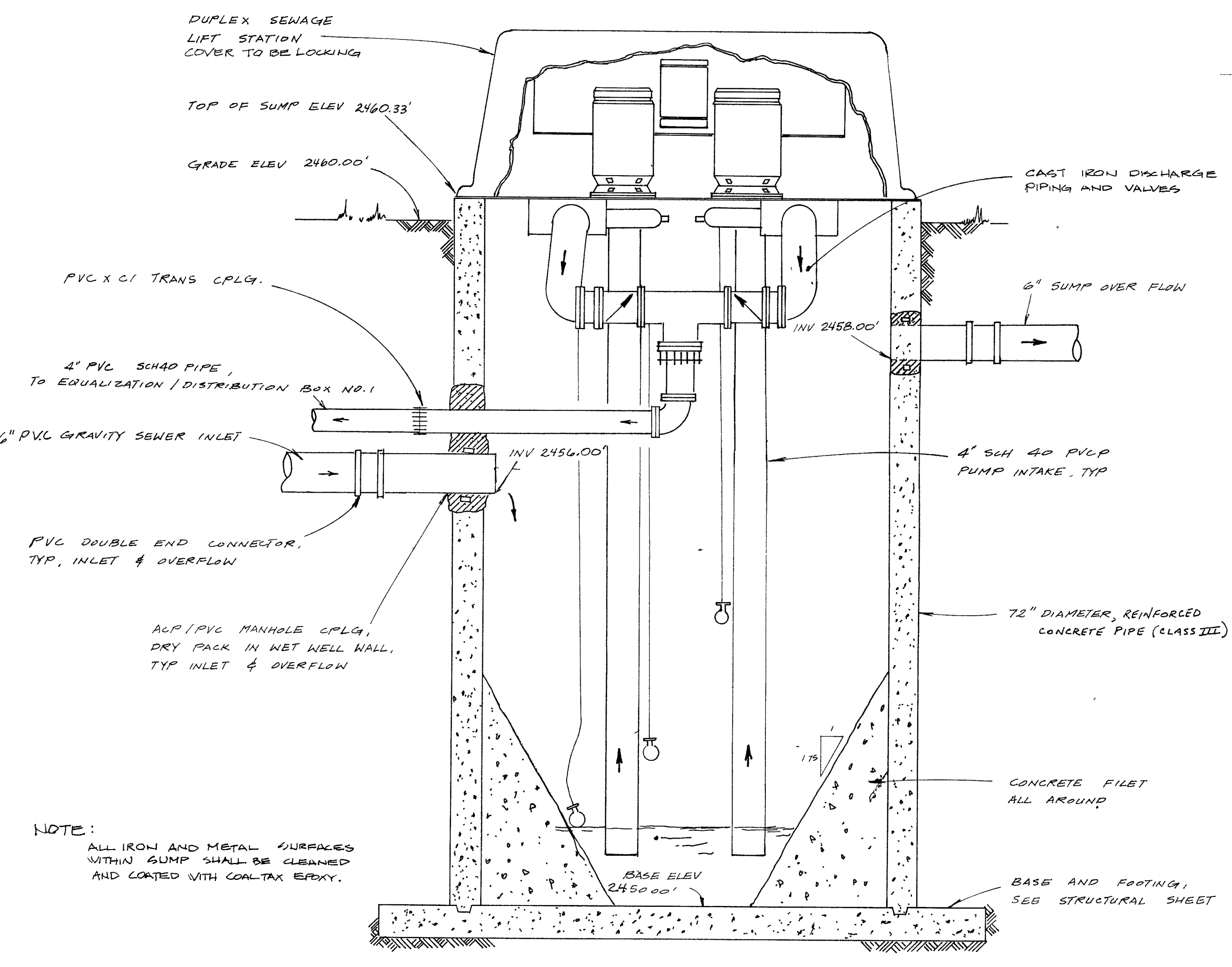
PLAN-EQUALIZATION-DISTRIBUTION BOX
N.T.S.



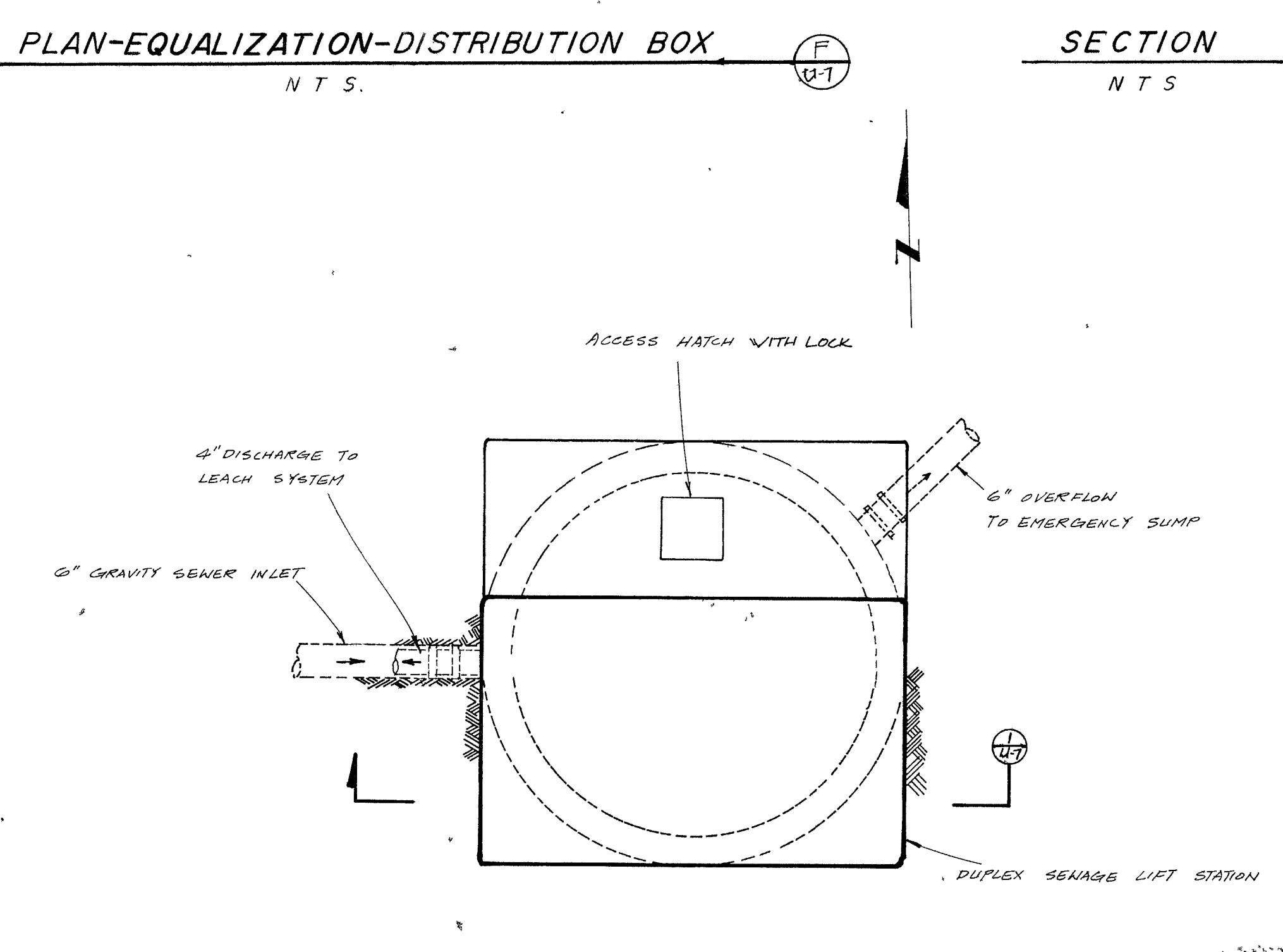
SECTION
N.T.S.



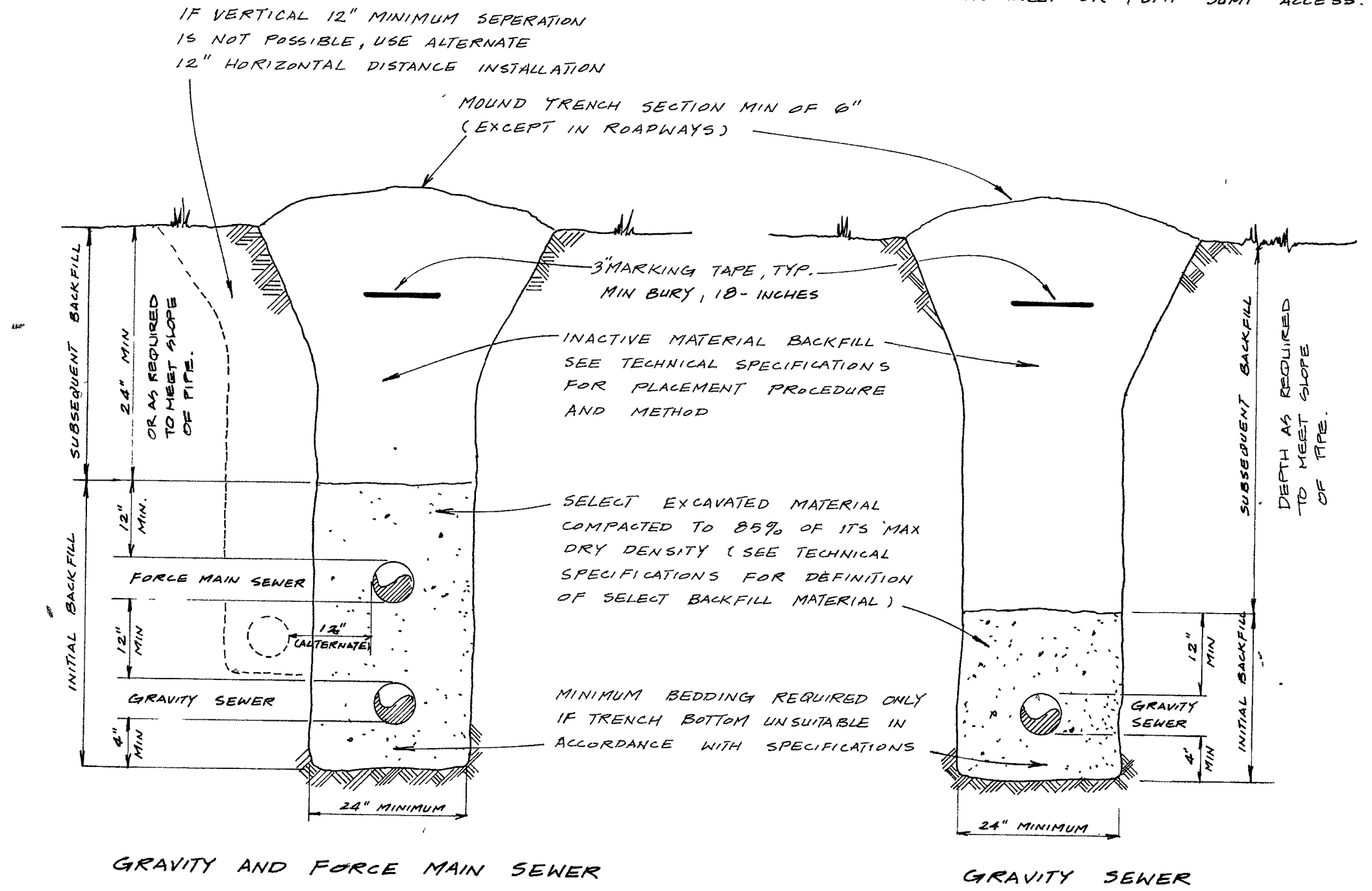
DETAIL - SLIDE GATE
N.T.S.



SECTION
SCALE 3/4" = 1'-0"



PLAN - SEWAGE PUMP STATION
SCALE 1/2" = 1'-0"



SEWER TRENCH BEDDING & BACKFILL
N.T.S.

waterresource consulting engineers

CHARLES SALADINO-LANDSCAPE ARCHITECT-ASLA-LTD

SEWAGE SYSTEM DETAILS

PHASE 1-B & 2

FLOYD LAMB STATE PARK TULE SPRINGS

1395 HASKELL ST. SUITE C-RENO, NEVADA-89509-707-786-2560

U-7