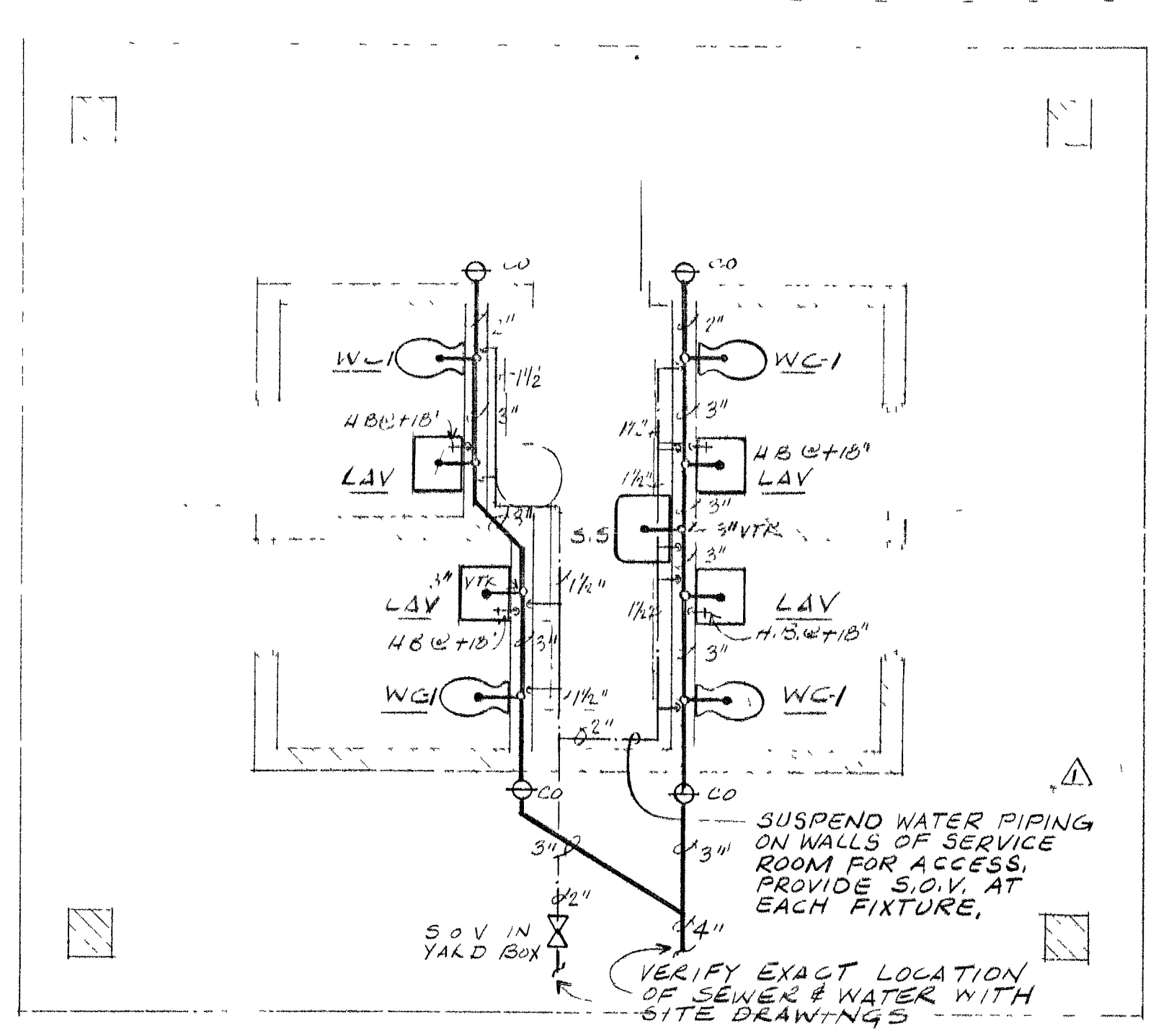
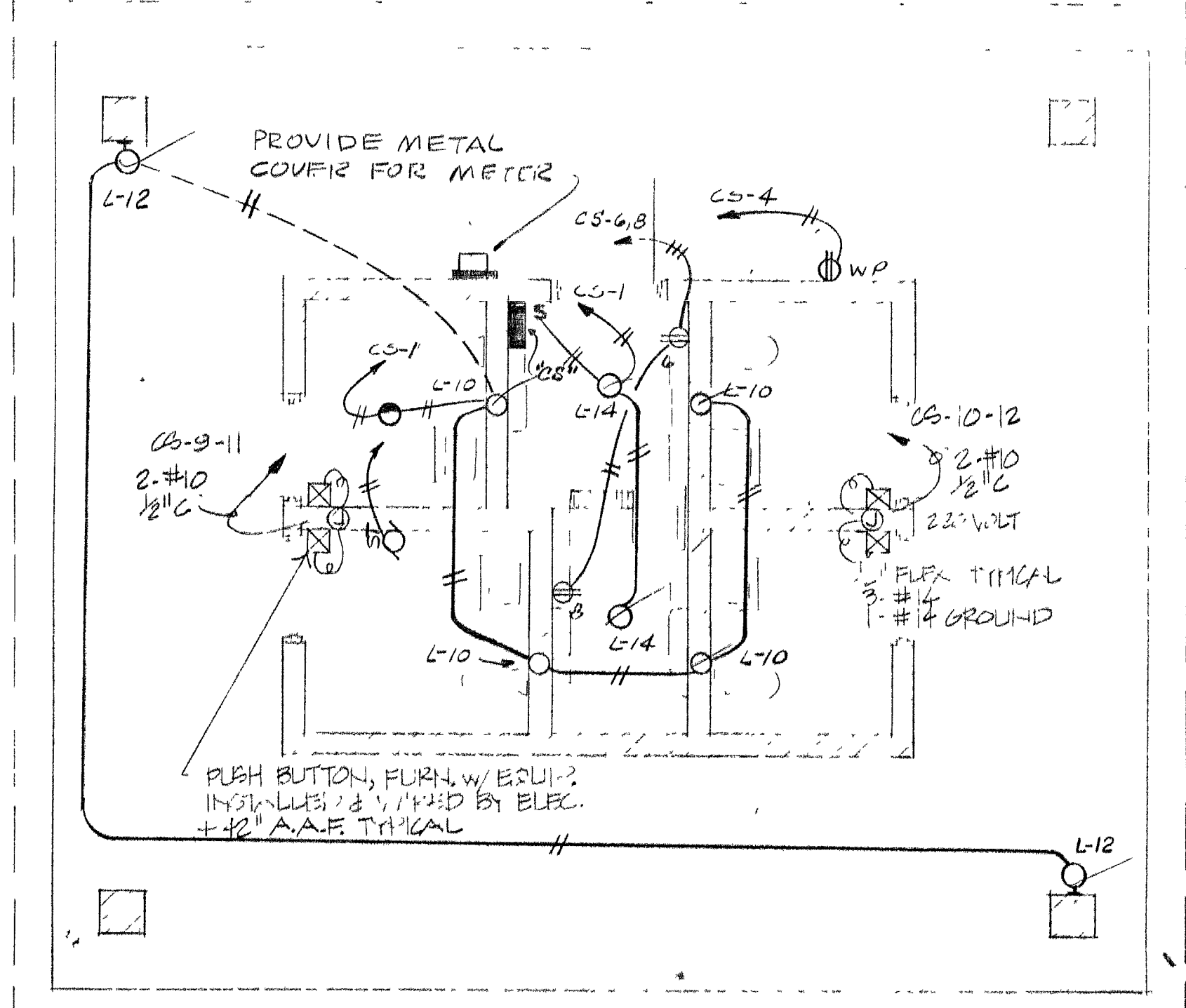


PLUMBING FIXTURE LIST

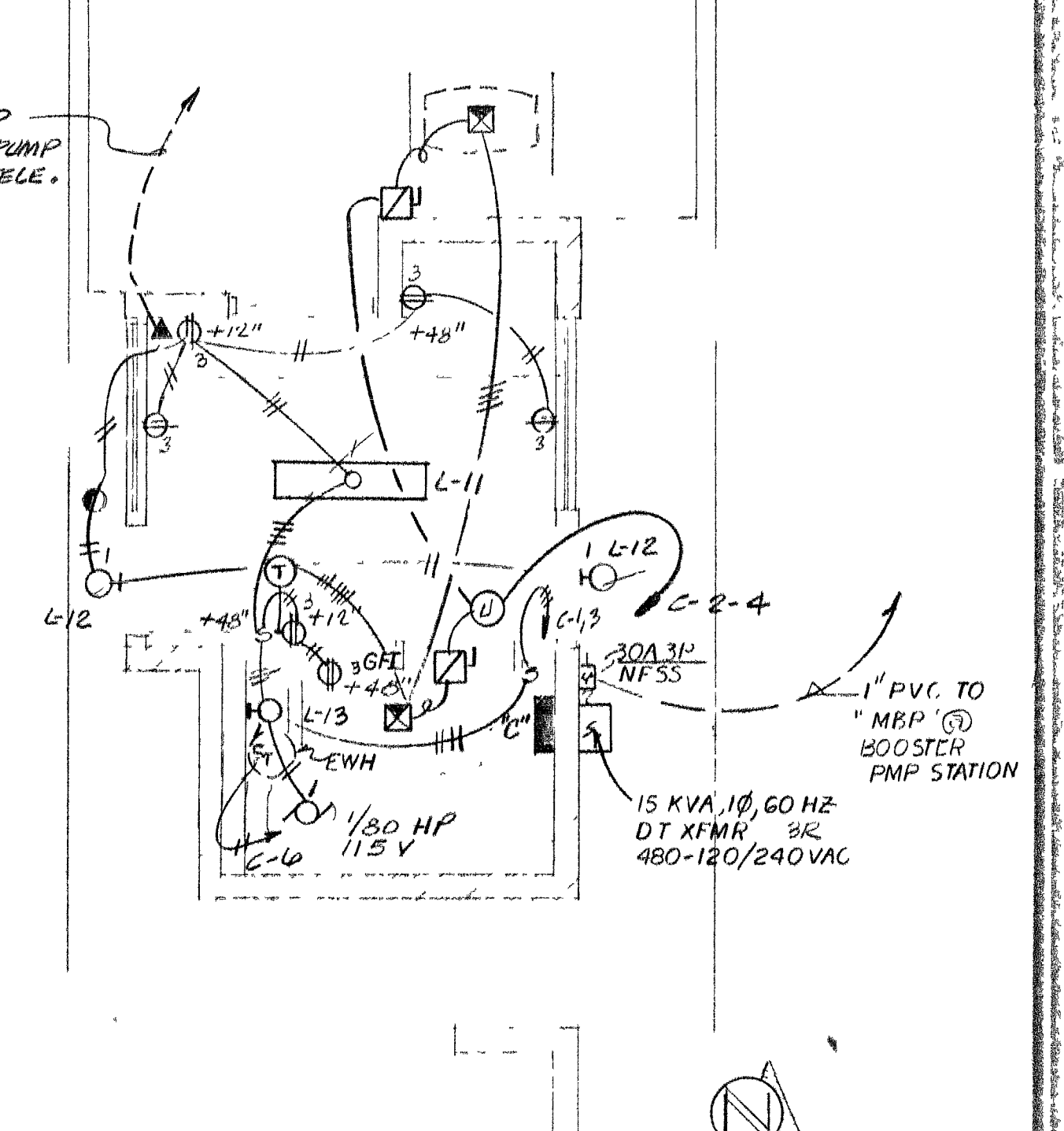
- WC-1 - WATER CLOSET - AMERICAN STANDARD NO 2228.016 "MADERA" VITREOUS CHINA SIPHON W/ ACTION - ELONGATED BOWL, 1/2" DP SPUD W/ DOWNSHUTE NO 46 OPEN FRONT SEAT & COVER AND SWAN ROYAL NO 110 FLUSH VALVE WITH VACUUM BREAKER & SCREWDRIVER STOP.
- WC-2 - WATER CLOSET - AMERICAN STANDARD NO 2109.056 ELONGATED CADET TOILET - BUOY COVERED TANK, FREE STANDING, VITREOUS CHINA W/ DOWNSHUTE NO 46 OPEN FRONT SEAT & COVER AND C.P. ANGLE STOP & C.P. SUPPLY RISER.
- LAV - LAVATORY - AMERICAN STANDARD NO 0321.075 DECLYN LAVATORY W/ FRONT OVERFLOW, VITREOUS CHINA W/ ELKAY NO LR-2417 CENTERSET LAV FAUCET & CHROME PLATED LEVER HANDLES, COMPLETE W/ POP-UP DRAIN ASSEMBLY, C.P. ANGLE STOP VALVES, C.P. SUPPLY RISERS & C.P. P-TRAP.
- LAV-1 - LAVATORY - AMERICAN STANDARD NO 3201.035 "KILLYN" FITTING LEVER FRONT OVERFLOW, VITREOUS CHINA W/ ELKAY NO LR-2417 CENTERSET LAV FAUCET & CHROME PLATED LEVER HANDLES, COMPLETE W/ POP-UP DRAIN ASSEMBLY, C.P. ANGLE STOP VALVES, C.P. SUPPLY RISERS & C.P. P-TRAP.
- SS - SERVICE SINK - AMERICAN STANDARD NO 7692.049 (22" x 18") LAKEVIEW ENAMELED CAST IRON W/ 8341.075 FAUCET W/ VACUUM BREAKER & SCREWDRIVER STOPS, AND NO 7798.044 TRAP STANDARD.
- SH - SHOWER - AMERICAN STANDARD MODEL 132 2151.017 W/ ELKAY NO 3552 W/ INTEGRAL STOPS & DRAIN P/R FIBERGLASS ENCLOSURE.
- S-1 - TWO COMPARTMENT SINK - ELKAY NO WNSF-8230R SINK - 55" x 27 1/2" OVERALL, 8" HIGH BACKSPASH, 1/2" COMPARTMENT DEPTH W/ LK-66-C FAUCET, NO LK-3 BASKET STRAINER, LK-33 WASTE CONN., C.P. SUPPLY RISERS, CP ANGLE STOP VALVES, 1 C.P. P-TRAP.
- BT - BATHTUB - AMERICAN STANDARD NO 2605.103 ENAMELED CAST IRON, SLIP RESISTANT SURFACE, W/ NO 1303.577 HERITAGE DIVERTER BATH & SHOWER FITTING W/ CRYSTALLINE HANDLES & NO 1560.101 MULTI FLEX POP-UP DRAIN.
- KS-1 - (N.I.C.)
- KS-2 - TWO COMPARTMENT CORNER KITCHEN SINK - ELKAY NO 21732-4 WITH DUAL CONTROL FAUCET WITH SPRAY NO 0-6595 AND (2) 3/8" DRAIN OUTLET FITTINGS, NO D-1125 WITH C.P. ANGLE STOP VALVES, C.P. SUPPLY RISERS & C.P. P-TRAP.



COMFORT STATION PLUMBING PLAN
SCALE: 1/4" = 1'-0"



TYPICAL COMFORT STATION ELECTRICAL PLAN
SCALE: 1/4" = 1'-0"



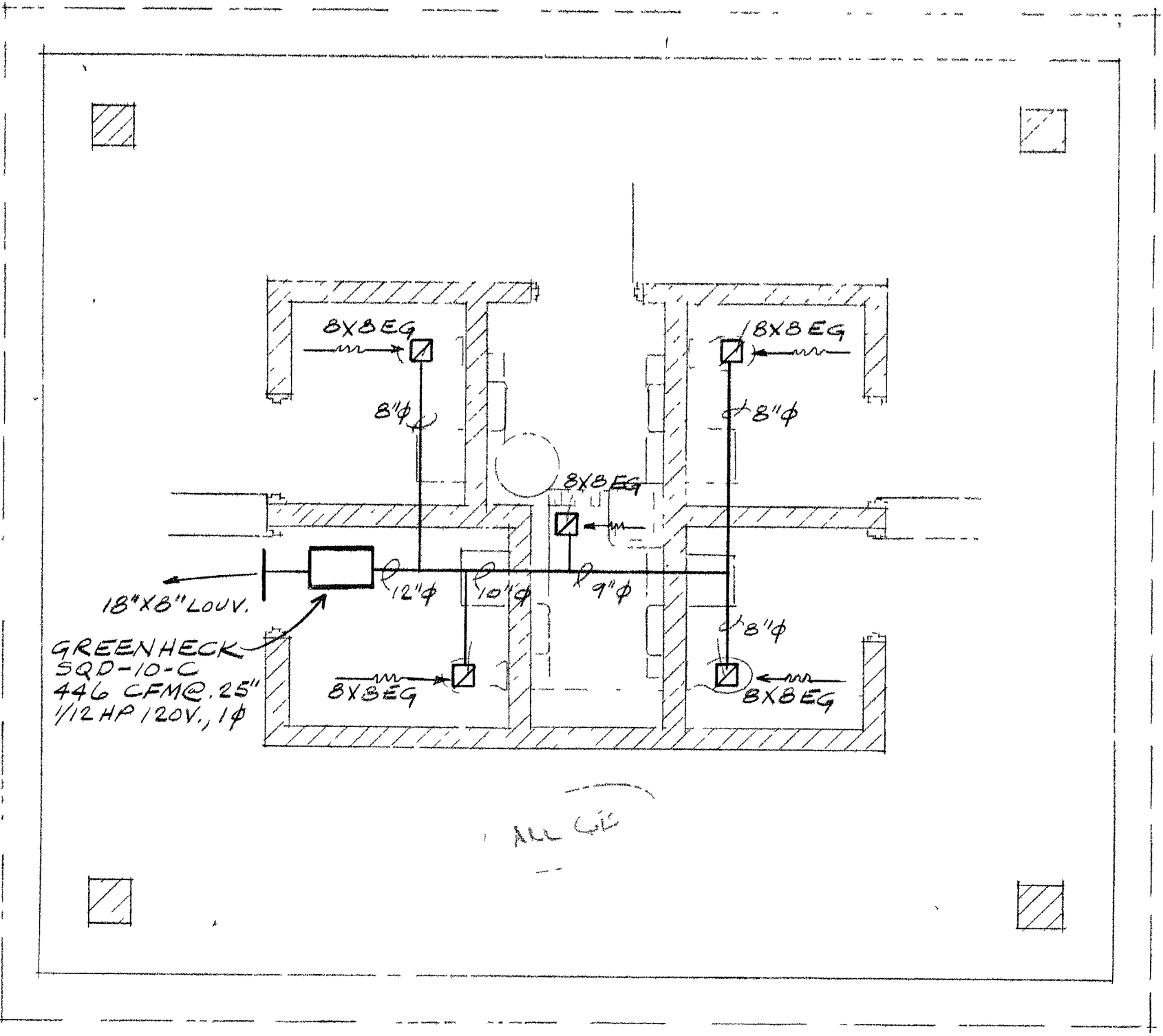
CONTACT STATION ELECTRICAL PLAN
SCALE: 1/4" = 1'-0"

PANEL "CS" SCHEDULE
TYPE LOAD CENTER NEMA I BRACING 10Ka (MIN)
VOLTAGE: 120/240, 3W, 1Ø MOUNTING SURFACE MAINS: 125 AMP
TOTALS: 4A 1" 250 4B 10,880 = 23,130 VA MAIN BREAKER
AMP CALC: 13,130 ÷ 230 = 57.08 A X 1.25 = 71.35 AMPS

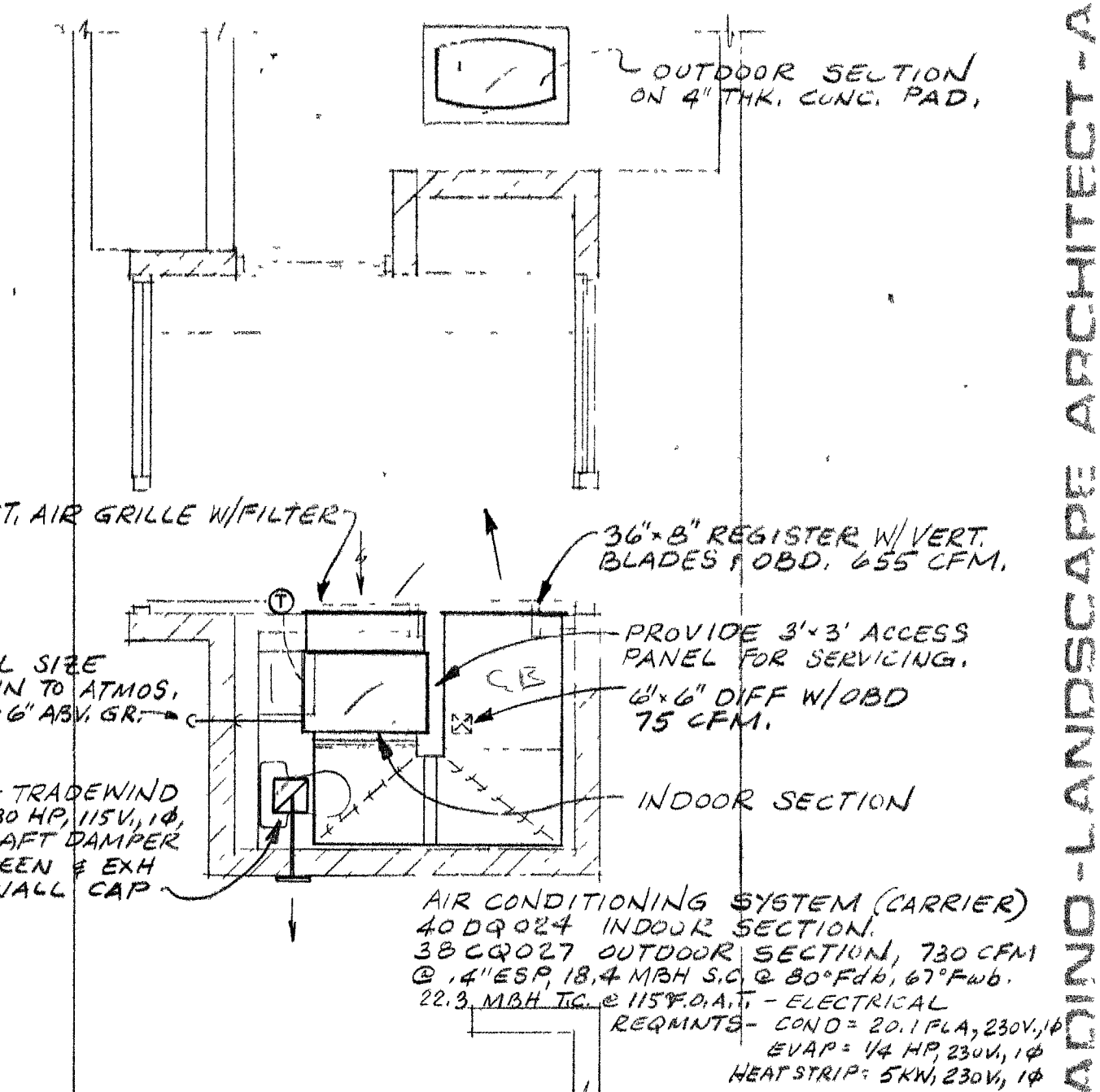
CIRCUIT DESCRIPTION	BRK	SIZE	NO	VA	W	WATT	CIRCUIT DESCRIPTION
LIGHTING	1	300	1	300	300	90,000	EXHAUST FAN
IRRIGATION CONTROL	3	1000	1	1000	1000	300,000	EXTERIOR RECEPT
* 3000 CONTROL VALVE	7	1000	1	1000	1000	300,000	HEAT TAPE
HAND DRYER	9	2200	1	2200	2200	660,000	HAND DRYER
2" H.O. S.C.	11	2200	1	2200	2200	660,000	2" H.O. S.C.
SPACE W/ BUS	18	1000	1	1000	1000	300,000	SPACE W/ BUS

PANEL "C" SCHEDULE
TYPE LOAD CENTER NEMA I BRACING 10Ka (MIN)
VOLTAGE: 120/240, 3W, 1Ø MOUNTING SURFACE MAINS: 100 AMP
TOTALS: 4A 1" 250 4B 6660 = 13,320 VA MAIN BREAKER
AMP CALC: 13,320 ÷ 230 = 57.91 A X 1.25 = 72.39 AMPS

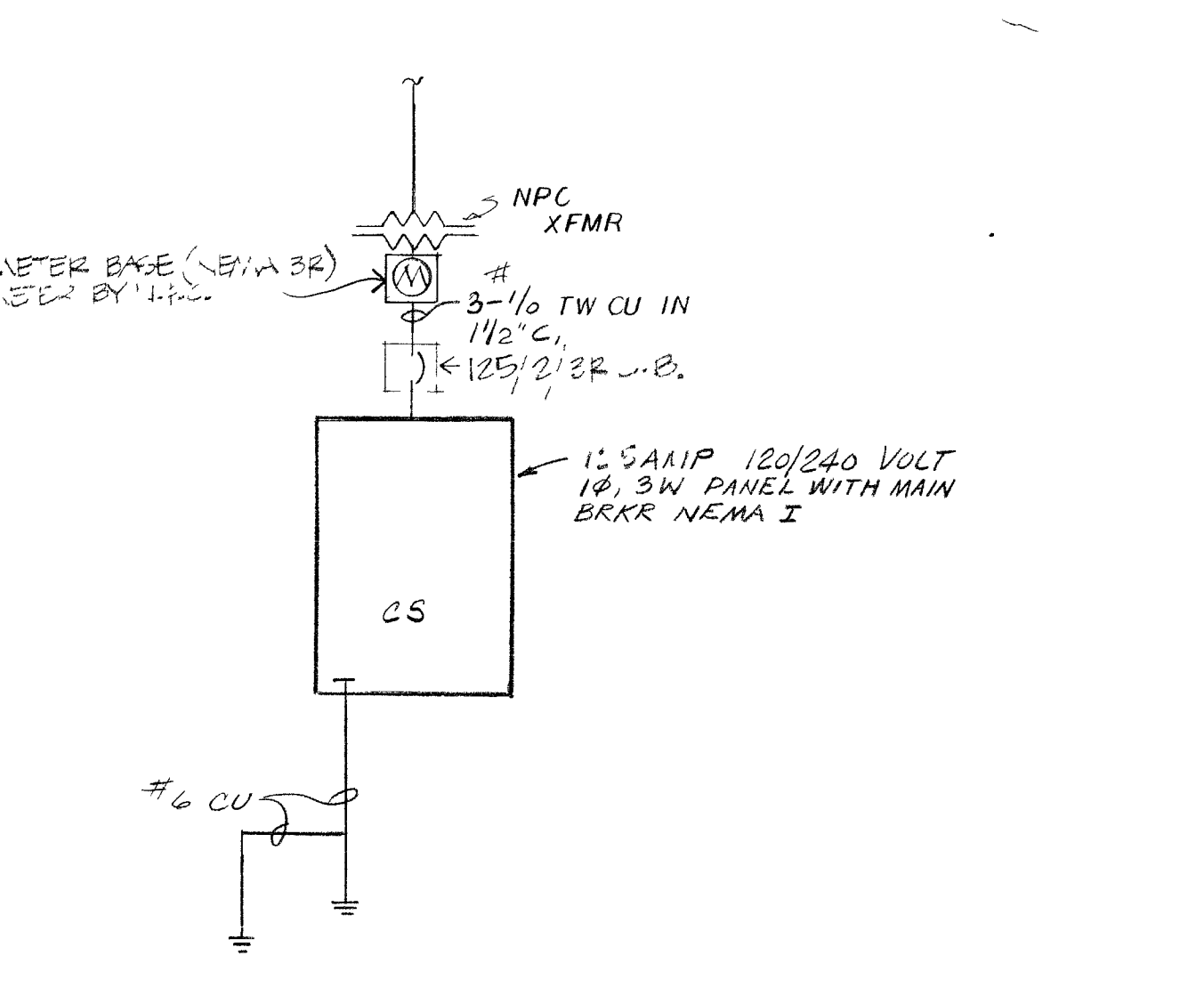
CIRCUIT DESCRIPTION	BRK	SIZE	NO	VA	W	WATT	CIRCUIT DESCRIPTION
SPARE	1	5140	1	5140	5140	154,200	A/C WINDOW
RECEPTACLES	2	130	2	260	260	7800	UNIT 240V, 1Ø
IRRIGATION CONTROL	5	200	1	200	200	6000	ELEC. W. H.
LTS.	7	1500	1	1500	1500	45000	SPACE W/ BUS
SPACE W/ BUS	11	1000	1	1000	1000	30000	SPACE W/ BUS



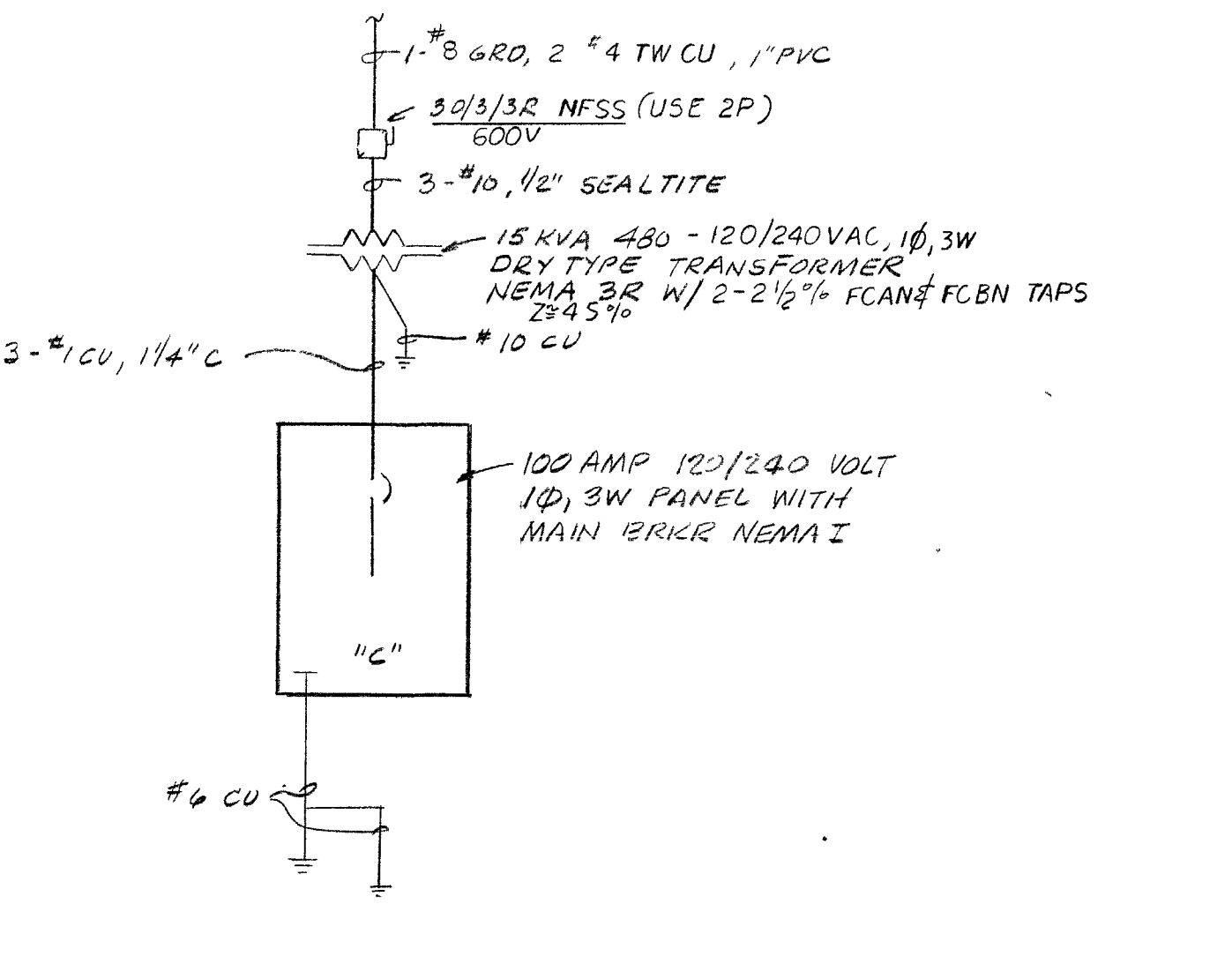
COMFORT STATION VENTILATION PLAN
SCALE: 1/4" = 1'-0"



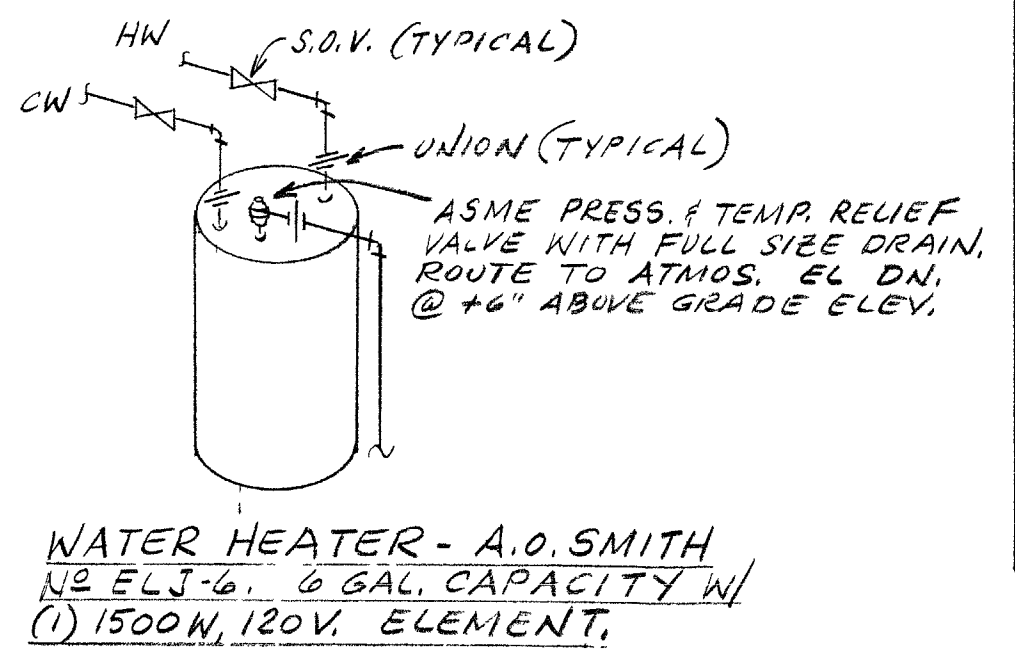
CONTACT STATION AIR CONDITIONING PLAN
SCALE: 1/4" = 1'-0"



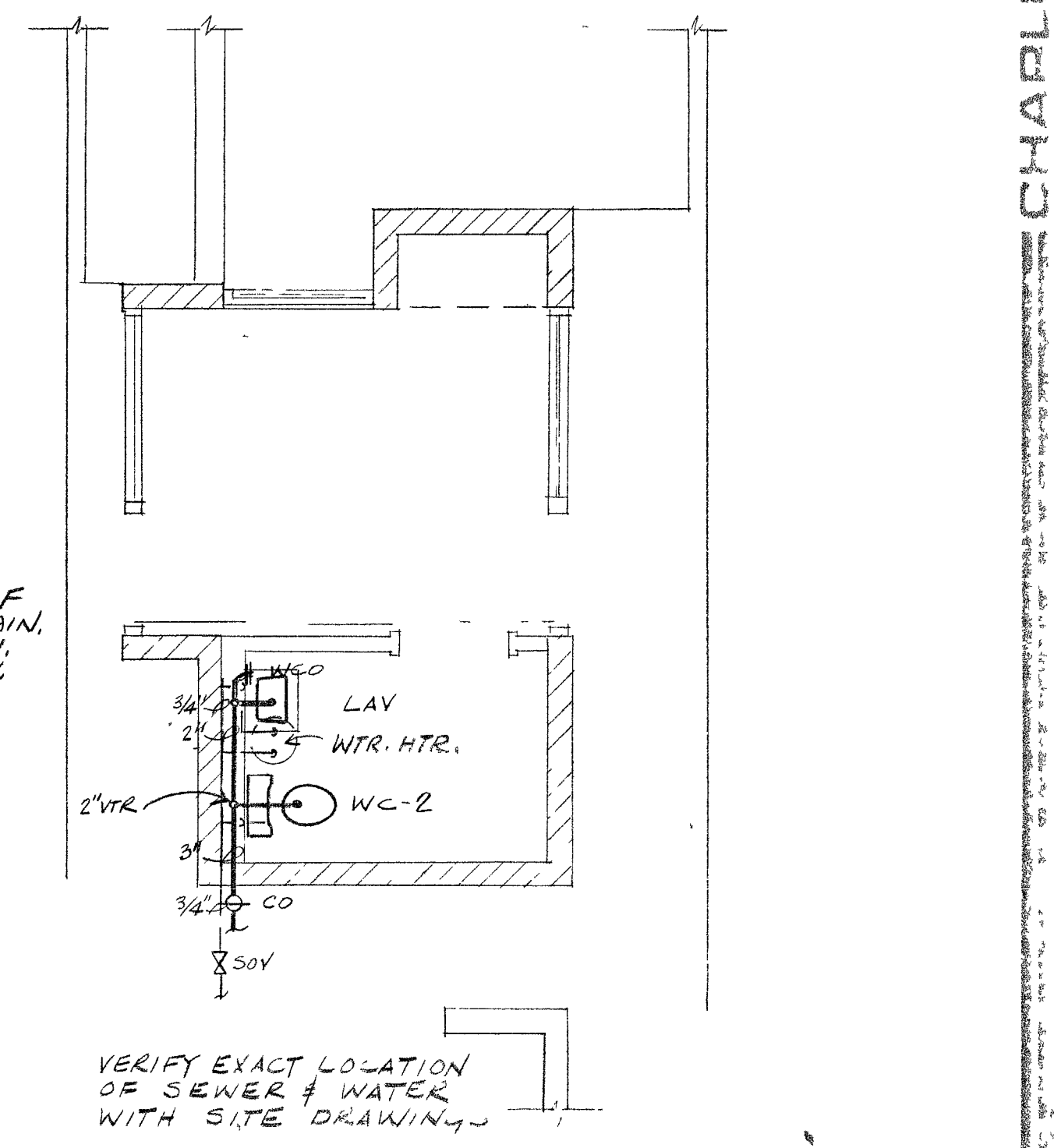
TYPICAL COMFORT STATION SINGLE LINE DIAGRAM
NOT TO SCALE



CONTACT STATION SINGLE LINE DIAGRAM
NOT TO SCALE



ELECTRIC WATER HEATER DETAIL
NOT TO SCALE



CONTACT STATION PLUMBING PLAN
SCALE: 1/4" = 1'-0"

JAMES H. GLOVER
CONSULTING ENGINEER
4000 W. PIONEER AVENUE
SUITE 201
LAS VEGAS, NEVADA 89102 (702) 876-3374

CHARLES SALADINO - LANDSCAPE ARCHITECT - ASLA - LTD
ELECTRICAL PLANS COMFORT STATIONS
FLOYD LAMB STATE PARK - TULE SPRINGS
1955 HASKELL ST. - SUITE C - DENO, NEVADA - 89009 - 709-756-2560