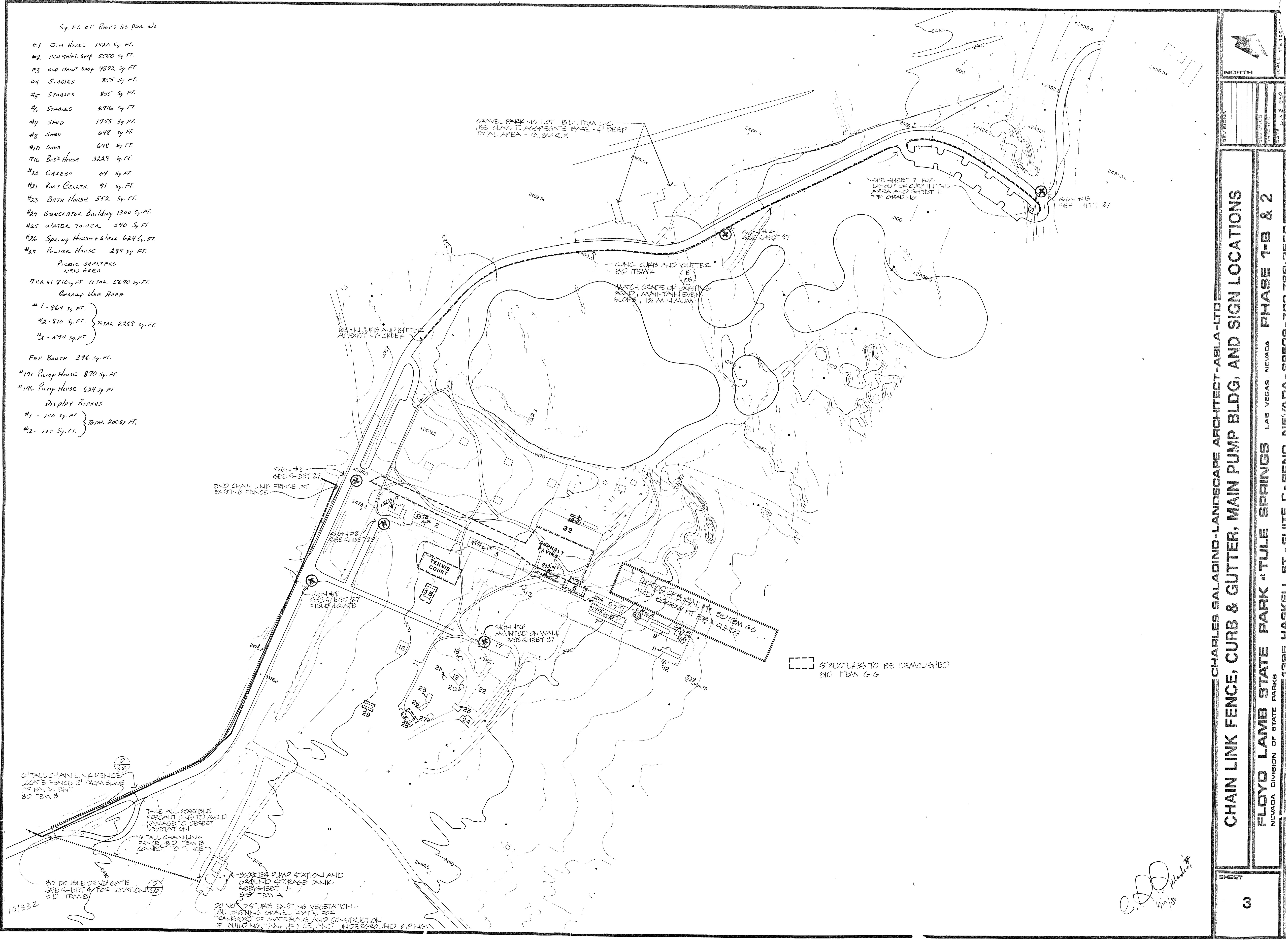


Sq. Ft. of Roofs AS PER No.

- #1 JIM HOUSE 1520 Sq. Ft.
- #2 NEW MINT SHIP 5550 Sq. Ft.
- #3 OLD MINT SHIP 4872 Sq. Ft.
- #4 STABLES 855 Sq. Ft.
- #5 STABLES 855 Sq. Ft.
- #6 STABLES 2716 Sq. Ft.
- #7 SHED 1755 Sq. Ft.
- #8 SHED 648 Sq. Ft.
- #10 SHED 648 Sq. Ft.
- #16 BOB'S HOUSE 3228 Sq. Ft.
- #20 GAZEBO 64 Sq. Ft.
- #21 ROOT CELLAR 91 Sq. Ft.
- #23 BATH HOUSE 552 Sq. Ft.
- #24 GENERATOR BUILDING 1300 Sq. Ft.
- #25 WATER TOWER 540 Sq. Ft.
- #26 SPRING HOUSE + WELL 624 Sq. Ft.
- #27 POWER HOUSE 284 Sq. Ft.
- PICNIC SHEDS
NEW AREA
- 7 EM. AT 810 Sq. FT. TOTAL 5670 Sq. FT.
- CONC. USE AREA
- #1 - 964 Sq. Ft.
- #2 - 810 Sq. Ft. TOTAL 2268 Sq. Ft.
- #3 - 594 Sq. Ft.
- FEE BOOTH 396 Sq. Ft.
- #171 PUMP HOUSE 870 Sq. Ft.
- #176 PUMP HOUSE 624 Sq. Ft.
- DISPLAY BOARDS
- #1 - 100 Sq. Ft. TOTAL 200 Sq. Ft.
- #2 - 100 Sq. Ft.



NORTH

REVISIONS

DATE

SCALE 1"=100'

CHAIN LINK FENCE, CURB & GUTTER, MAIN PUMP BLDG, AND SIGN LOCATIONS

FLOYD LAMB STATE PARK LAS VEGAS, NEVADA **PHASE 1-B & 2**

NEVADA DIVISION OF STATE PARKS

1200 W. LAS VEGAS ST. SUITE C, DENVER, NEVADA 89001

SHEET

3

C. J. Saladino
6/1/18

101332