

MATCH LINE A

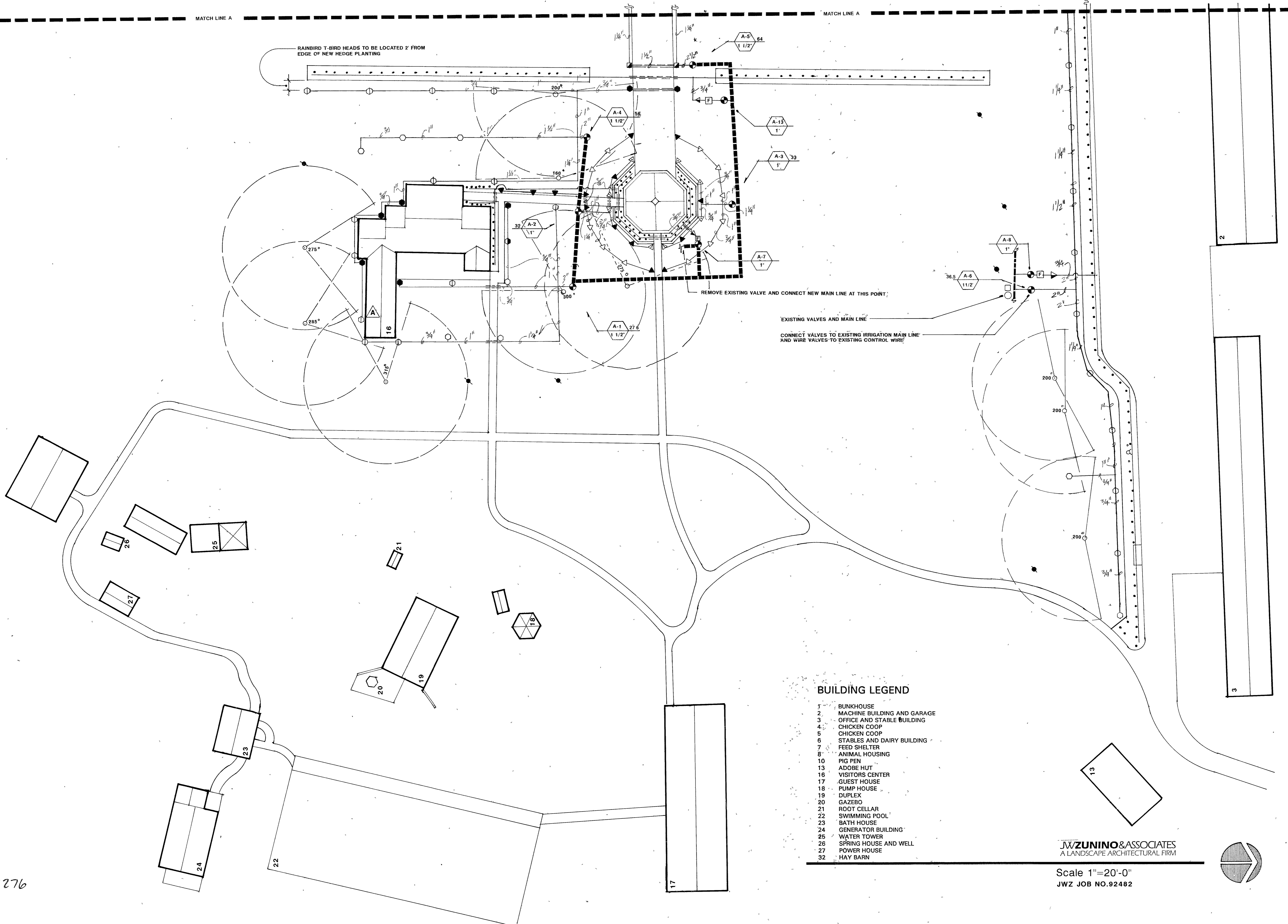
MATCH LINE A

RAINBIRD T-BIRD HEADS TO BE LOCATED 2' FROM  
EDGE OF NEW HEDGE PLANTING

REMOVE EXISTING VALVE AND CONNECT NEW MAIN LINE AT THIS POINT

EXISTING VALVES AND MAIN LINE

CONNECT VALVES TO EXISTING IRRIGATION MAIN LINE  
AND WIRE VALVES TO EXISTING CONTROL WIRE

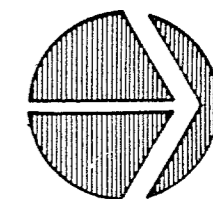


**BUILDING LEGEND**

- 1 BUNKHOUSE
- 2 MACHINE BUILDING AND GARAGE
- 3 OFFICE AND STABLE BUILDING
- 4 CHICKEN COOP
- 5 CHICKEN COOP
- 6 STABLES AND DAIRY BUILDING
- 7 FEED SHELTER
- 8 ANIMAL HOUSING
- 10 PIG PEN
- 13 ADOBE HUT
- 16 VISITORS CENTER
- 17 GUEST HOUSE
- 18 PUMP HOUSE
- 19 DUPLEX
- 20 GAZEBO
- 21 ROOT CELLAR
- 22 SWIMMING POOL
- 23 BATH HOUSE
- 24 GENERATOR BUILDING
- 25 WATER TOWER
- 26 SPRING HOUSE AND WELL
- 27 POWER HOUSE
- 32 HAY BARN

**JWZUNINO & ASSOCIATES**  
A LANDSCAPE ARCHITECTURAL FIRM

Scale 1"=20'-0"  
JWZ JOB NO. 92482



Patrick J. Kern AIA  
Wayne P. Schirmer AIA  
Thomas H. Sims AIA

**HSA ARCHITECTS, INC.**  
Architecture Planning Interiors  
1531 West Gabley Boulevard, Las Vegas, Nevada 89102  
(702) 983-0077 FAX (702) 983-0077

IRRIGATION PLAN

FLOYD LAMB STATE PARK

Job No. 92482

Date 7/1/94

Drawn By JWZ

Check JWZ

Sheet L3.01

7

101276