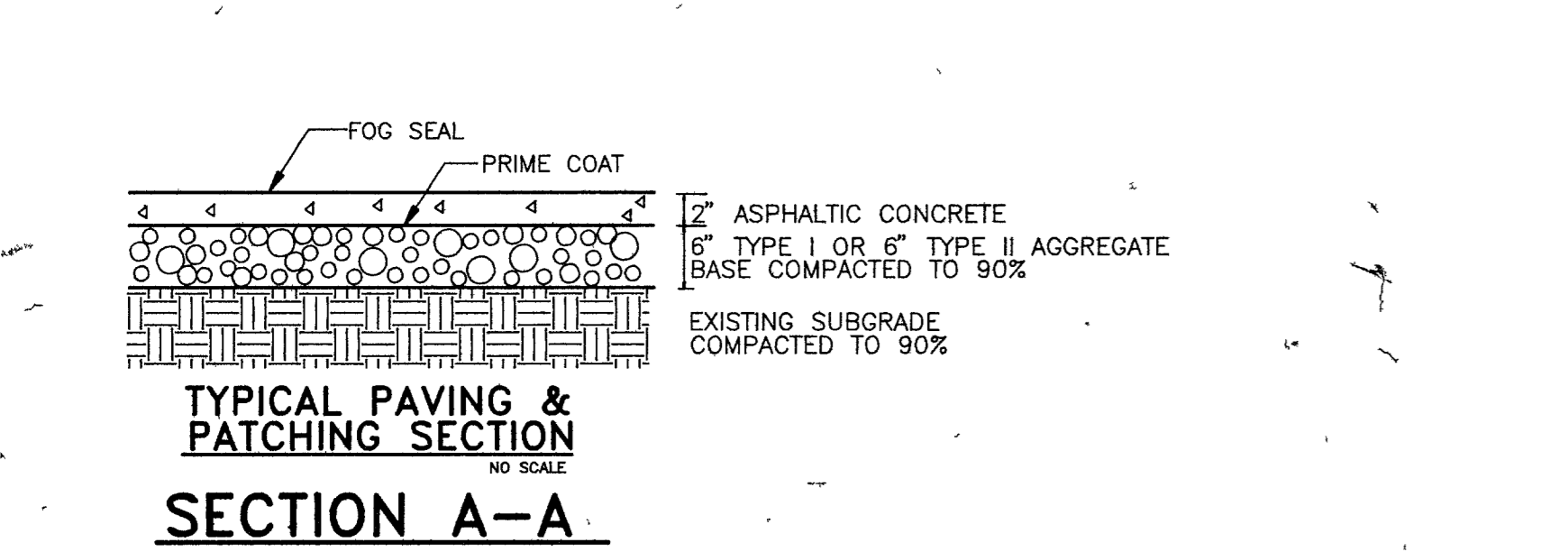
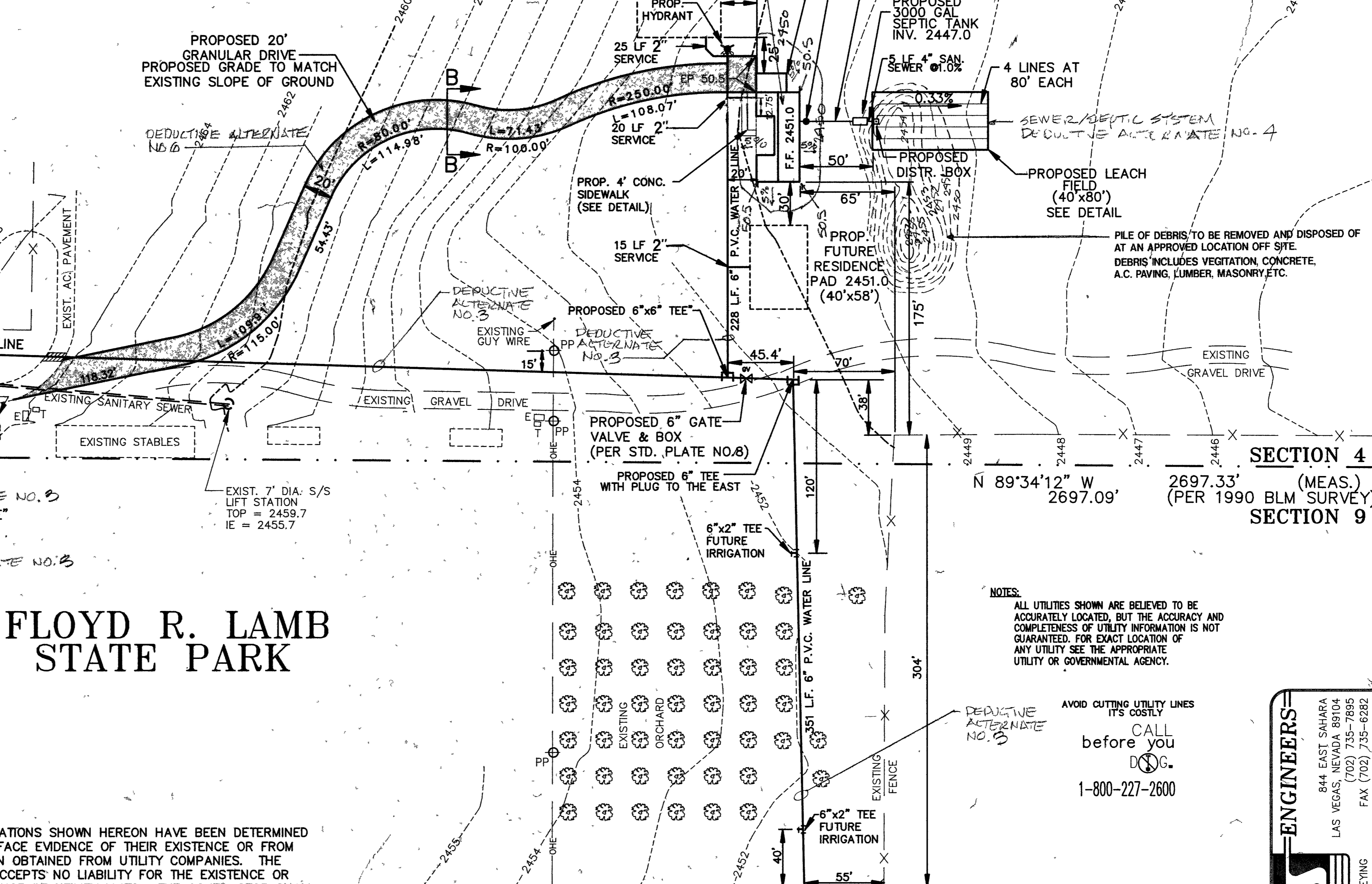
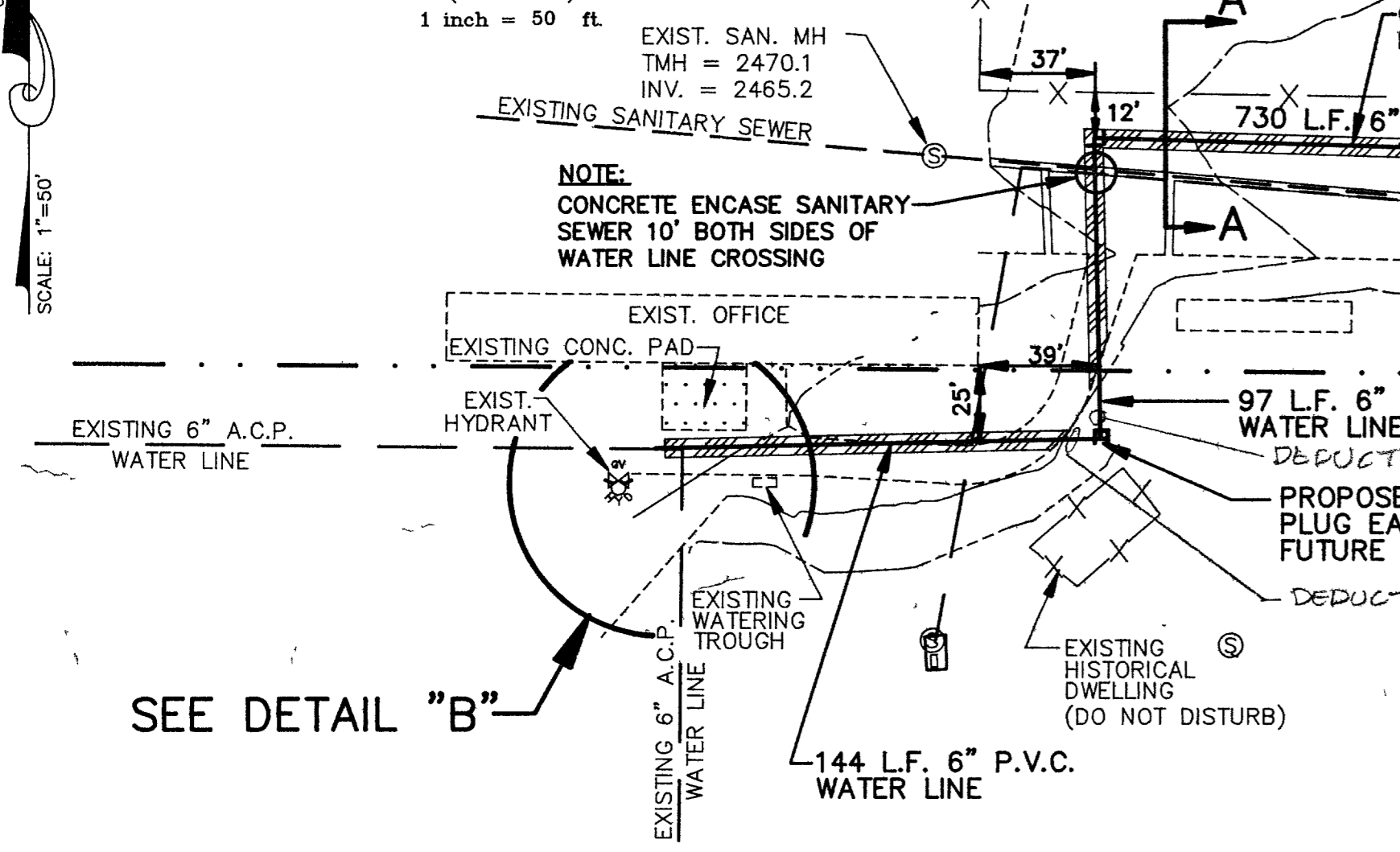
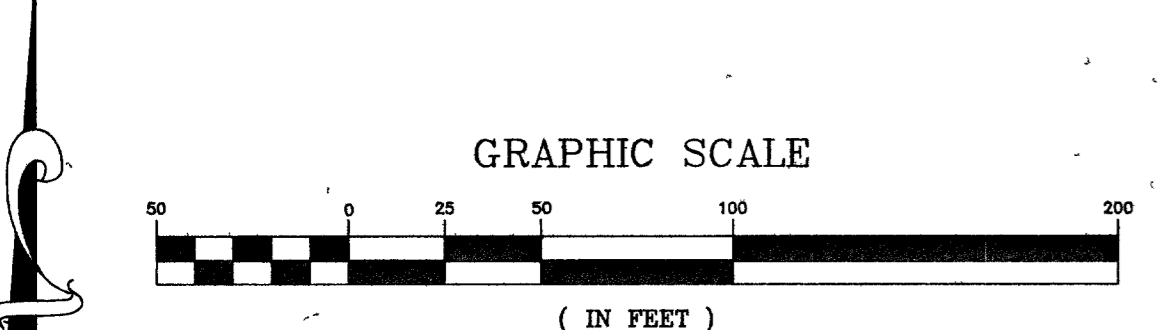
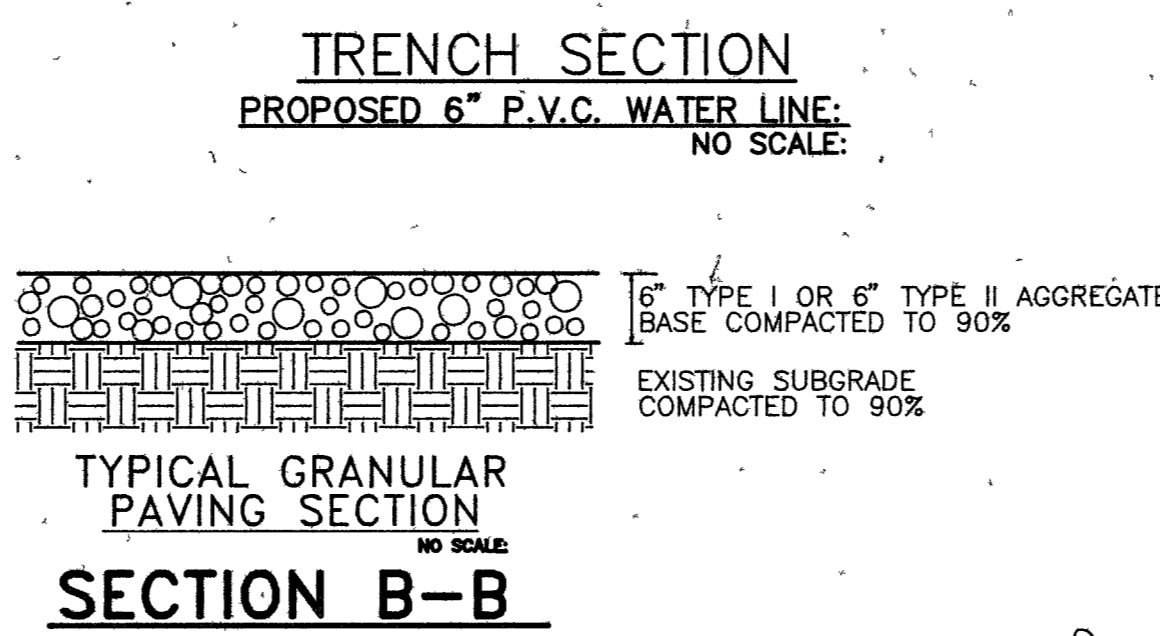
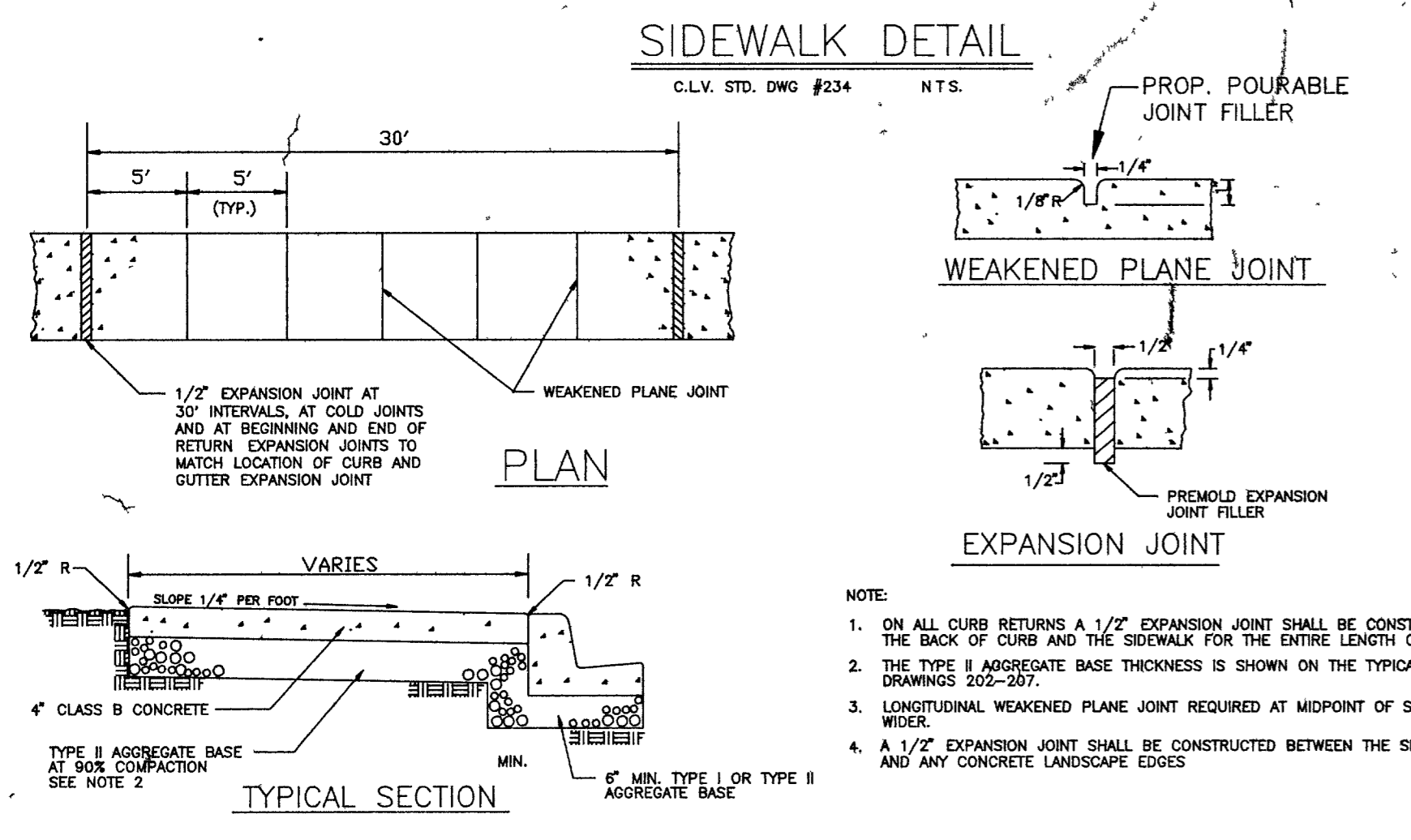


LEGEND:

- EXISTING SEWER LINE
- EXISTING WATER LINE
- PROPOSED WATER LINE
- ⊗ EXISTING WATER VALVE
- ⊗ EXISTING FIRE HYDRANT
- ⊗ EXISTING SEWER MANHOLE
- ⊗ EXISTING POWER POLE
- OHE --- EXISTING OVERHEAD LINES
- MONUMENT AS NOTED
- EXISTING CONTOUR LINES
- EXISTING AC ROAD
- EXISTING DIRT ROAD
- EXISTING BUILDING
- PROPOSED BUILDING
- EXISTING FENCE LINE
- EXISTING CONCRETE
- ⊗ EXISTING TELEPHONE VAULT
- ⊗ EXISTING ELECTRIC VAULT
- PROPOSED PAVEMENT REMOVAL AND REPLACEMENT
- PROPOSED 6 inch GRANULAR PAVEMENT SECTION



NOTE:
UTILITY LOCATIONS SHOWN HEREON HAVE BEEN DETERMINED FROM SURFACE EVIDENCE OF THEIR EXISTENCE OR FROM INFORMATION OBTAINED FROM UTILITY COMPANIES. THE ENGINEER ACCEPTS NO LIABILITY FOR THE EXISTENCE OR NON-EXISTENCE OF UTILITY LINES. THE CONTRACTOR SHALL DETERMINE THE EXACT HORIZONTAL AND VERTICAL LOCATION OF ALL EXISTING UTILITIES PRIOR TO COMMENCING CONSTRUCTION.

NOTE:
LOCATIONS SHOWN ARE APPROXIMATE ONLY. ALL PROPOSED WATERLINE AND VALVE LOCATIONS WILL BE LOCATED IN THE FIELD BY A STATE PARKS REPRESENTATIVE.

MATCHLINE
SEE SHEET C3

NOTES:
ALL UTILITIES SHOWN ARE BELIEVED TO BE ACCURATELY LOCATED, BUT THE ACCURACY AND COMPLETENESS OF UTILITY INFORMATION IS NOT GUARANTEED. FOR EXACT LOCATION OF ANY UTILITY SEE THE APPROPRIATE UTILITY OR GOVERNMENTAL AGENCY.

AVOID CUTTING UTILITY LINES IT'S COSTLY
CALL before you dig.
1-800-227-2600

JAS ENGINEERS
844 EAST SAHARA
LAS VEGAS, NEVADA 89104
(702) 735-7895
(702) 735-6282
FAX (702) 735-6282

LAND SURVEYING
CIVIL ENGINEERING
STRUCTURAL ENGINEERING
FORENSIC ENGINEERING

Patrick J. Kriek AIA
Wayne P. Schreiner AIA
Thomas M. Silva AIA

HSA Architects, Inc.
ARCHITECTURE PLANNING INTERIORS
1525 West Oakey Boulevard, Las Vegas, Nevada 89102
(702) 353-0077

SITE PLAN AND DETAILS
FLOYD R. LAMB STATE PARK
DEPARTMENT OF CONSERVATION AND NATURAL RESOURCES

Sheet Title
Job Title
Job 92-011
Date 7/1/94
Drawn By B.P.T.
Check B.P.T.
Sheet C4
Of 4

101271