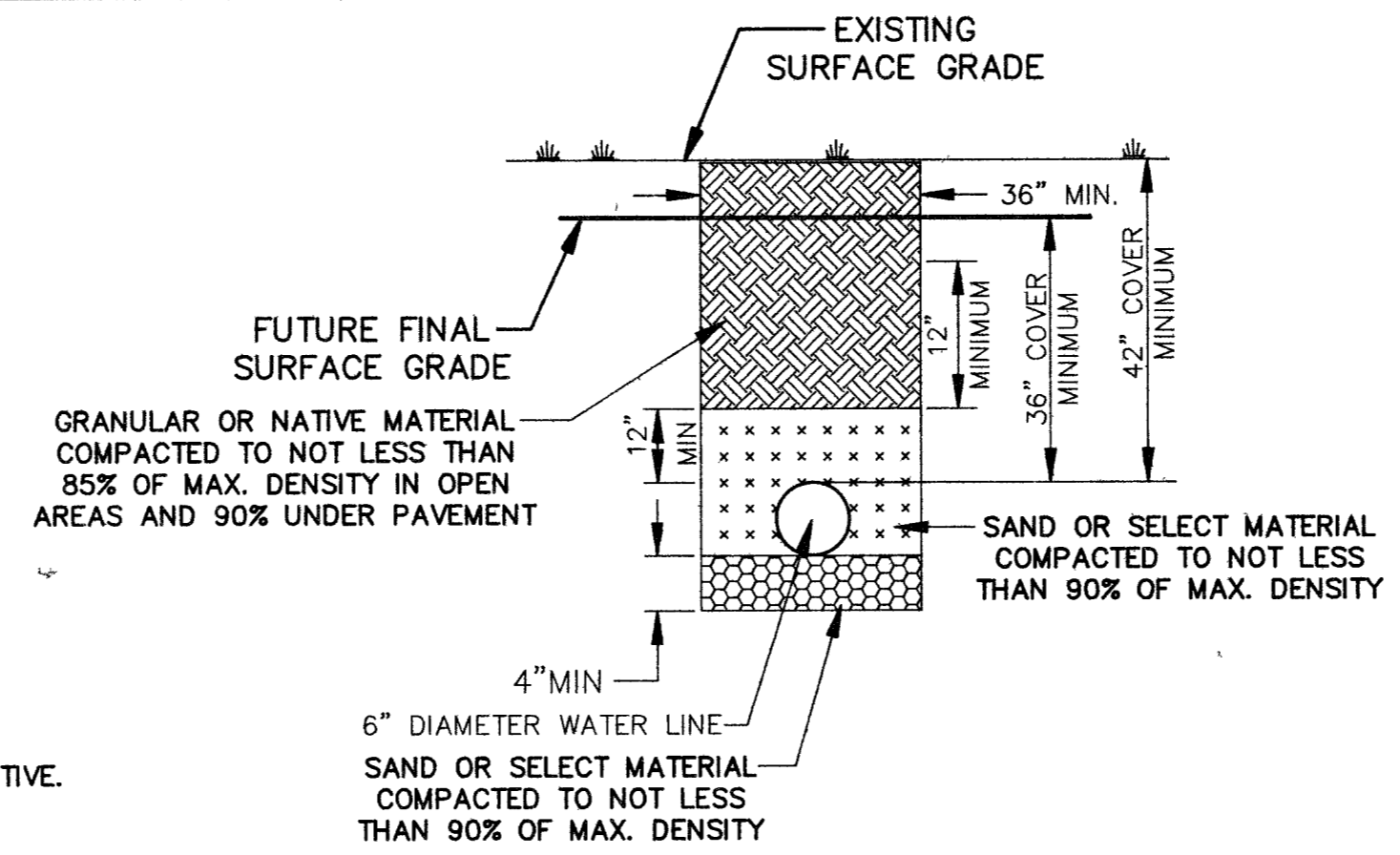


NOTE:
UTILITY LOCATIONS SHOWN HEREON HAVE BEEN DETERMINED FROM SURFACE EVIDENCE OF THEIR EXISTENCE OR FROM INFORMATION OBTAINED FROM UTILITY COMPANIES. THE ENGINEER ACCEPTS NO LIABILITY FOR THE EXISTENCE OR NON-EXISTENCE OF UTILITY LINES. THE CONTRACTOR SHALL DETERMINE THE EXACT HORIZONTAL AND VERTICAL LOCATION OF ALL EXISTING UTILITIES PRIOR TO COMMENCING CONSTRUCTION.

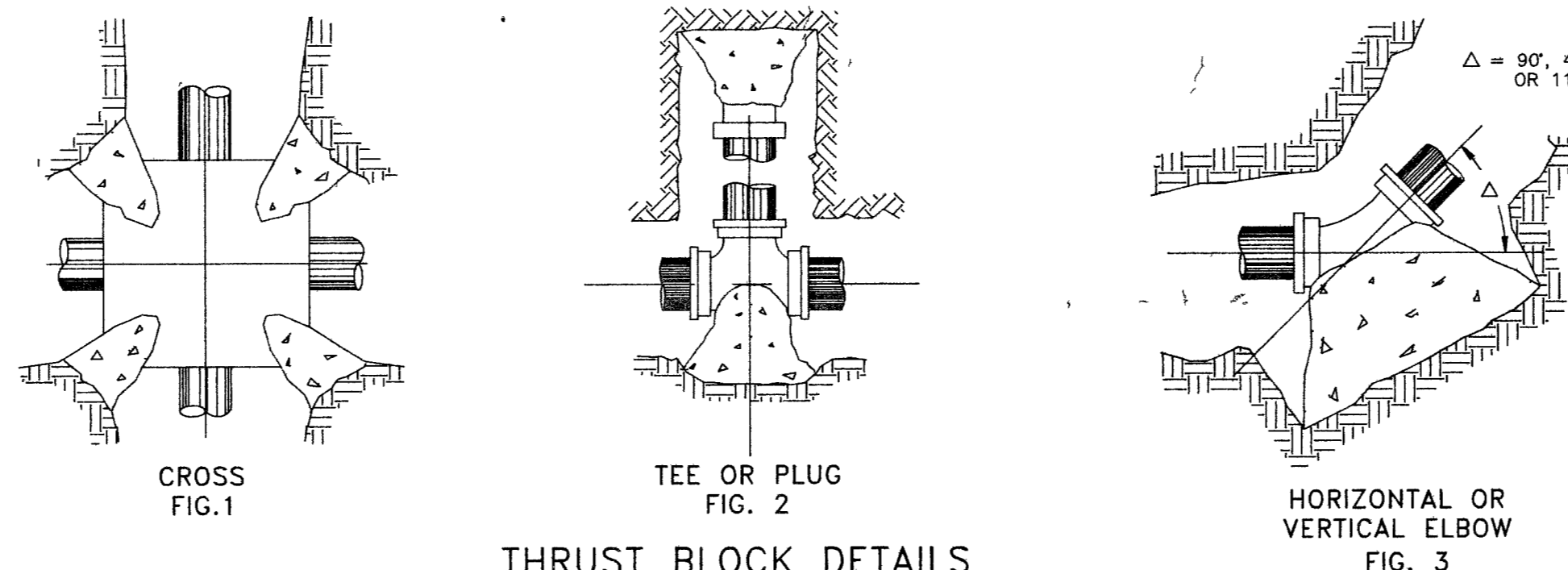
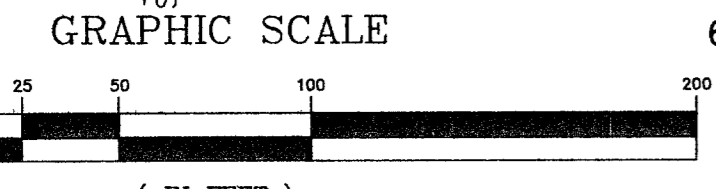
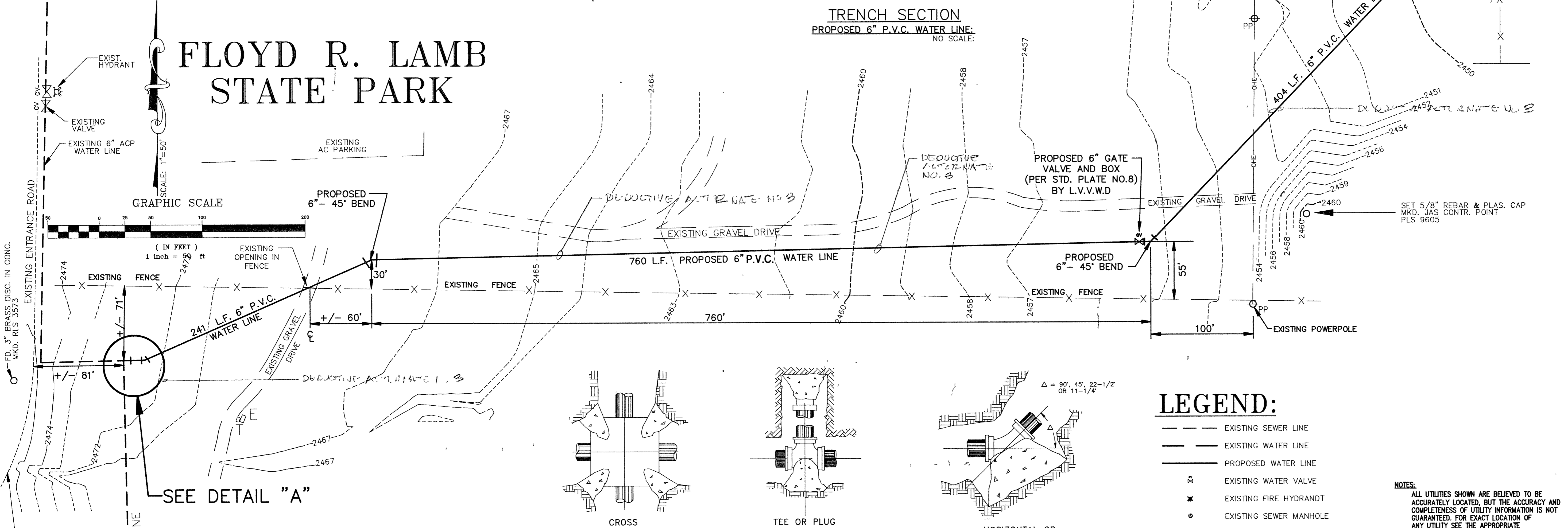
NOTE:
LOCATIONS SHOWN ARE APPROXIMATE ONLY. ALL PROPOSED WATERLINE AND VALVE LOCATIONS WILL BE LOCATED IN THE FIELD BY A STATE PARKS REPRESENTATIVE.



TRENCH SECTION
PROPOSED 6" P.V.C. WATER LINE.
NO SCALE.

MATCHLINE
SEE SHEET C4

FLOYD R. LAMB STATE PARK



THRUST BLOCK DETAILS

- NOTES:**
1. ALL FITTING AND EXPOSED REBAR TO BE COATED WITH EC 244 AND WRAPPED WITH TWO LAYERS OF 6 MIL. POLYETHYLENE.
 2. ALL CONCRETE SHALL BE CLASS C MINIMUM 28 DAY STRENGTH.
 3. TABLE BELOW DENOTES MINIMUM BEARING AREA OR VOLUME OF THRUST BLOCK. SPECIAL DESIGN FOR EACH INSTALLATION IS REQUIRED IF ALLOWABLE SOIL BEARING CAPACITY IS LESS THAN 3000 P.S.F.
 4. PLACE CONCRETE AGAINST UNDISTURBED EARTH.
 5. VERTICAL SURFACES NOT BEARING AGAINST UNDISTURBED EARTH SHALL BE FORMED.

SIZE OF PIPE	MIN. BEARING IN SQUARE FEET				CUBIC YARDS OF CONCRETE				
	FIG. 1	FIG. 2	FIG. 3		FIG. 4				
			90'	45'	22-1/2'	11-1/4'	45'	22-1/2'	11-1/4'
4"		2	2	1	1	1	1.0	5	.5
6"	2	3	3	2	1	1	1.5	1.0	.5
8"	2	5	6	3	2	1	2.0	1.0	.5

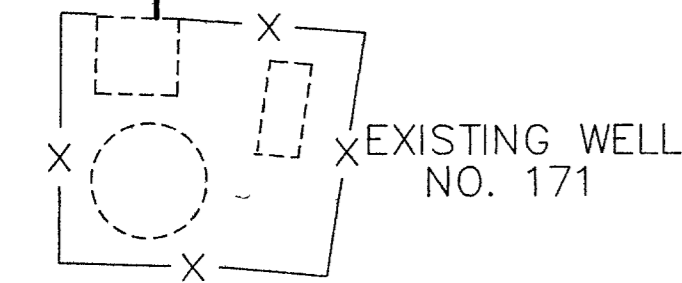
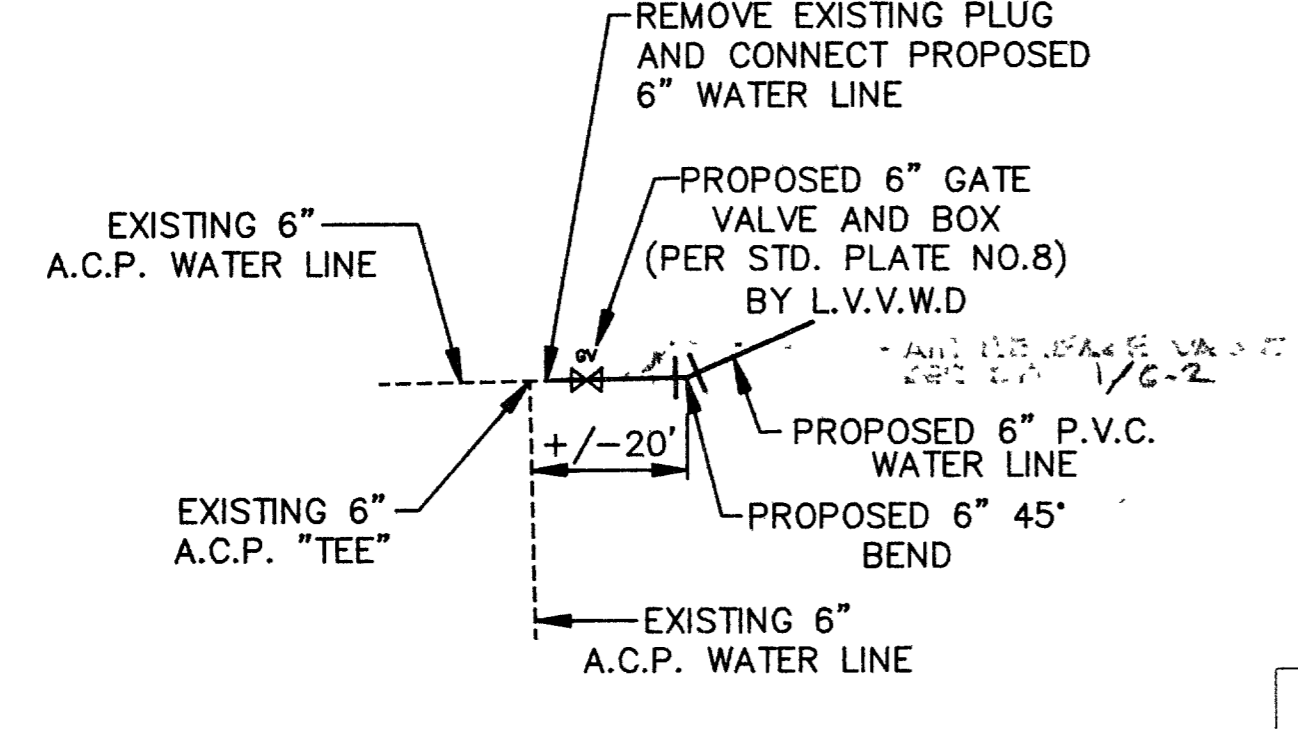
LEGEND:

- EXISTING SEWER LINE
- - - EXISTING WATER LINE
- PROPOSED WATER LINE
- ⊕ EXISTING WATER VALVE
- ⊙ EXISTING FIRE HYDRANT
- ⊙ EXISTING SEWER MANHOLE
- ⊕ EXISTING POWER POLE
- OHE — EXISTING OVERHEAD LINES
- MONUMENT AS NOTED
- EXISTING CONTOUR LINES
- == EXISTING AC ROAD
- == EXISTING DIRT ROAD
- EXISTING BUILDING
- PROPOSED BUILDING
- x - x - EXISTING FENCE LINE
- ⊕ EXISTING CONCRETE
- ⊕ EXISTING TELEPHONE VAULT
- ⊕ EXISTING ELECTRIC VAULT

NOTES:
ALL UTILITIES SHOWN ARE BELIEVED TO BE ACCURATELY LOCATED, BUT THE ACCURACY AND COMPLETENESS OF UTILITY INFORMATION IS NOT GUARANTEED. FOR EXACT LOCATION OF ANY UTILITY SEE THE APPROPRIATE UTILITY OR GOVERNMENT AGENCY.

AVOID CUTTING UTILITY LINES
IT'S COSTLY
CALL
before you
DIG.
1-800-227-2600

DETAIL "A"
NO SCALE



Patrick J. Klenk AIA
Wayne P. Schreiner AIA
Thomas M. Silva AIA

HSA Architects, Inc.
ARCHITECTURE PLANNING INTERIORS
1525 West Oakey Boulevard, Las Vegas, Nevada 89102
(702) 383-0077

WATER LINE LOCATION
FLOYD R. LAMB STATE PARK
DEPARTMENT OF CONSERVATION AND NATURAL RESOURCES
Verify all Dimensions and Conditions at the Site

Sheet Title
Job Title
Job
Date
Drawn By
Check

92-011
7/1/94
B.P.T.
B.P.T.

Sheet
C3
Of
4

JAS ENGINEERS
844 EAST SAHARA
LAS VEGAS, NEVADA 89104
(702) 735-7895
FAX (702) 735-6282
LAND SURVEYING
CIVIL ENGINEERING
STRUCTURAL ENGINEERING
FORENSIC ENGINEERING

11210