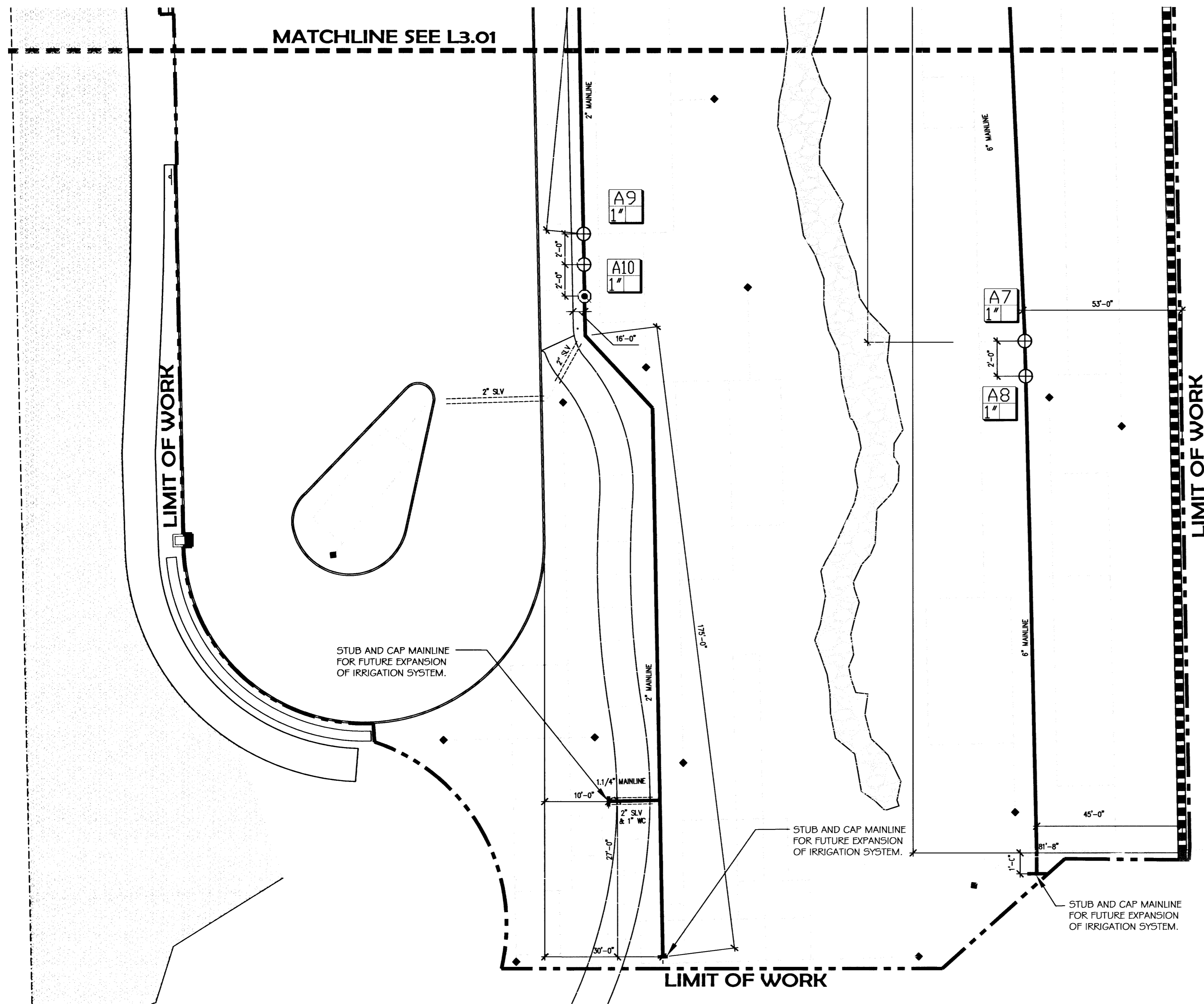


NOTE: IRRIGATION IS PART OF ADDITIVE ALTERNATE #2
 UTILITIES TO FUTURE IRRIGATION COMPONENTS ARE INCLUDED IN THE BASE BID.



IRRIGATION LEGEND

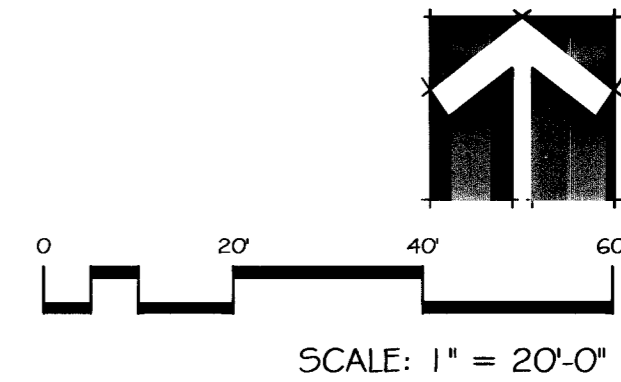
SYMBOL	DESCRIPTION
	POINT OF CONNECTION. SEE CIVIL UTILITY DRAWINGS.
	IRRIGATION CONTROLLER
	BACKFLOW PREVENTION DEVICE
	GATE VALVE
	DRIP VALVE ASSEMBLY
	RAIN BIRD 44NP QUICK COUPLER
	FLUSH VALVE
	SUPPLY LINE
	MAINLINE
	DRIP LINE HEADER
	SLEEVE(S)
	SLEEVE
	WIRE CHASE
	VALVE IDENTIFICATION

NOTES:

- SEE SHEETS L6.01 FOR IRRIGATION DETAILS AND IRRIGATION EQUIPMENT INFORMATION.
- INSTALL MAINLINE ADJACENT TO CURB OR SIDEWALK WHERE POSSIBLE.
- INSTALL CONTROL WIRE ADJACENT TO MAINLINE WHERE POSSIBLE.
- CONTRACTOR TO COORDINATE THE EXACT LOCATION AND ORIENTATION OF THE CONTROLLER(S) WITH THE OWNER'S REPRESENTATIVE.
- THE IRRIGATION SYSTEM IS BASED ON THE SITE STATIC WATER PRESSURE OF 73.2 PSI (BASED ON INFORMATION FROM T4GRF CIVIL ENGINEERS.) CONTRACTOR TO VERIFY PRIOR TO IRRIGATION WORK AND NOTIFY OWNER OF ANY DISCREPANCIES IMMEDIATELY.
- THE IRRIGATION SYSTEM HAS BEEN DESIGNED TO ACCOMMODATE A MAXIMUM OF 8 GPM PER EACH DRIP VALVE ASSEMBLY.

**RECORD DRAWINGS
 NOT FOR CONSTRUCTION**

- TO ALTER THESE DOCUMENTS FOR ANOTHER PROJECT BY ANYONE OTHER THAN THE ORIGINAL ARCHITECT IS A VIOLATION OF NRS 623.
- THIS RECORD DRAWING HAS BEEN PREPARED IN PART, BASED UPON INFORMATION FURNISHED BY THE GENERAL CONTRACTOR, WHILE THIS INFORMATION IS BELIEVED TO BE RELIABLE, THE DESIGN PROFESSIONAL CANNOT ASSURE ITS ACCURACY, AND THIS IS NOT RESPONSIBLE FOR THE ACCURACY OF THIS RECORD DRAWING OR FOR ANY ERRORS OR OMISSIONS WHICH MAY HAVE BEEN INCORPORATED INTO IT AS A RESULT. THE DESIGN PROFESSIONAL CANNOT AND DOES NOT WARRANT THEIR ACCURACY.
- INFORMATION THAT MAY BE INCLUDED WOULD BE SIGNIFICANT CHANGES TO PLANTING OR IRRIGATION LAYOUT PLANS AND ASSOCIATED DRAWINGS. MINOR DIMENSION OR CONSTRUCTION DETAIL CHANGES MAY NOT BE INCLUDED.



REVISIONS

1	CITY COMMENTS	www
2	RECORD DWG	www

CONSULTANT

SOUTHWICK LANDSCAPE ARCHITECTS
 12 Commerce Center Drive
 Henderson, NV 89004
 Phone: 702.597.3108
 Fax: 702.597.3177

City of Las Vegas
 Gilmore Cliff Shadows Trail Head
 IRRIGATION PLAN
 (ADDITIVE ALTERNATE #2)

STAMP

OWNER: CITY OF LAS VEGAS
 DEPARTMENT OF PUBLIC WORKS
 ARCHITECTURAL SERVICES

400 EAST STEWART AVENUE
 LAS VEGAS, NEVADA 89101
 PHONE: (702) 228-6535
 FAX: (702) 384-4846
 TDD: (702) 386-9108

DRAWN: SEWCD
 FILE: L04-033T
 DATE: SEPTEMBER 2006
 SCALE: AS SHOWN
 BID NO: 06.1534.11
 CLV DWG NO: 65083

SHEET NO: **L3.02**

108603