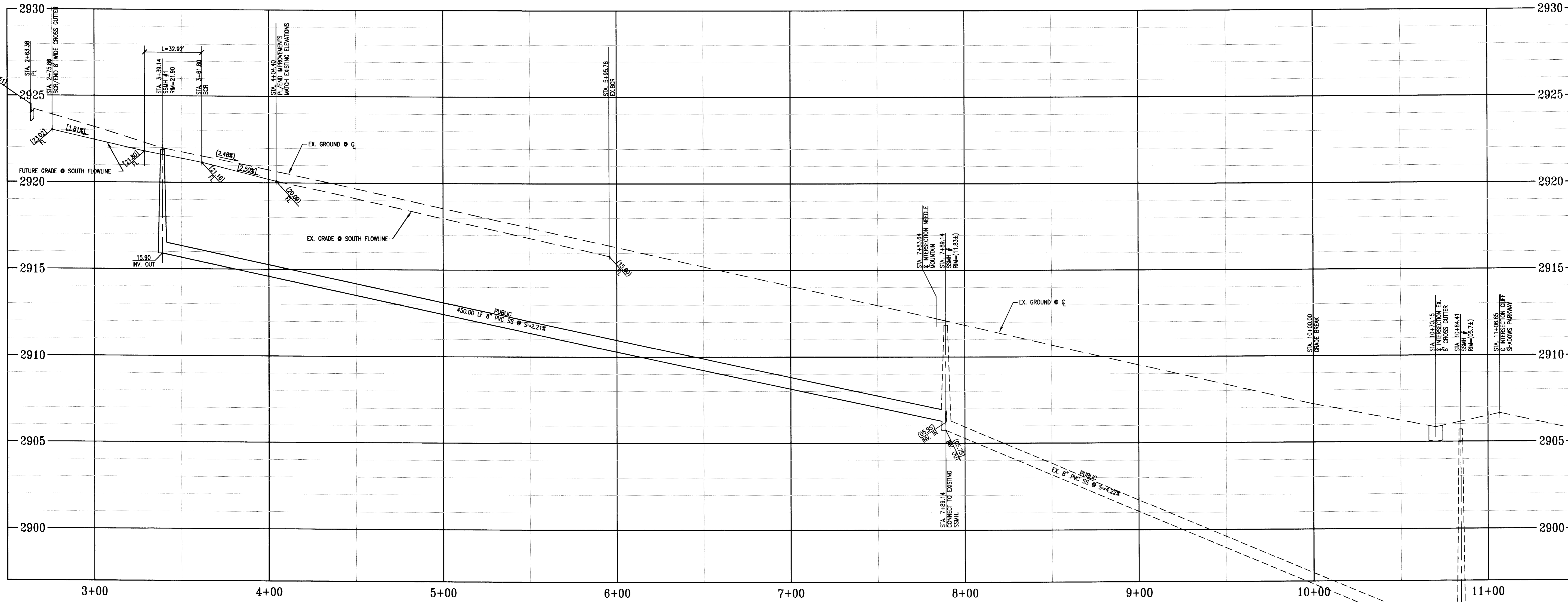


ALEXANDER ROAD PLAN
SCALE: HORIZONTAL - 1"=30'

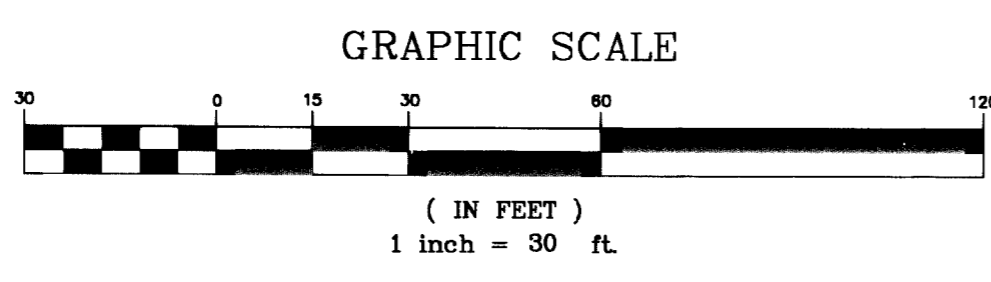
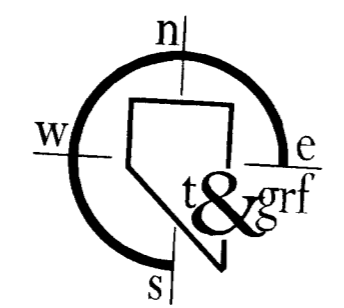


ALEXANDER ROAD PROFILE
SCALE: HORIZONTAL - 1"=30' VERTICAL - 1"=3'

- CONSTRUCTION NOTES**
- 1 CONSTRUCT L-TYPE CURB AND GUTTER PER CC AREA STD. DWG. No. 216.
 - 2 CONSTRUCT CONCRETE SIDEWALK PER CC AREA STD. DWG. No. 234
 - 3 NA
 - 4 CONSTRUCT SIDEWALK RAMP PER CC AREA STD. DWG. No. 235.
 - 5 MATCH IMPROVEMENTS PER TRITON ENGINEERING, CLV PLAN No. 10744831.
 - 6 MATCH IMPROVEMENTS PER WRG ENGINEERING, CLV PLAN No. 1074678.

BACK OF CURB CURVE DATA

CURVE No.	RADIUS	LENGTH	DELTA
C1	35.00'	32.92'	53°53'07"
C2	40.50'	64.96'	91°54'21"
C3	15.00'	27.89'	105°46'57"
C4	25.00'	17.71'	40°34'57"



BENCHMARK
CITY OF LAS VEGAS VERTICAL CONTROL POINT "LV09 12NWB", BEING A RIVET AND ALUMINUM PLATE IN A CONCRETE PAD (TRANS SW213), ON THE EAST SIDE OF CLIFF SHADOWS PARKWAY +/- 50 SOUTH OF CONCRETE WASH.
ELEVATION: 2861.21 (FEET)
872.0977 (METERS)
CITY OF LAS VEGAS VERTICAL CONTROL v.2003 BASED ON NORTH AMERICAN VERTICAL DATUM OF 1988 (NAVD 88).

BASIS OF BEARING
THE BASIS OF BEARINGS FOR THIS SURVEY IS NORTH 01°09'30" WEST, BEING THE WEST LINE OF THE NORTHWEST QUARTER (NW1/4) OF THE NORTHWEST QUARTER (NW1/4) OF SECTION 12, TOWNSHIP 20 SOUTH, RANGE 59 EAST, M.D.M., CLARK COUNTY, NEVADA AS SHOWN IN FILE 120 OF SURVEYS AT PAGE 83, OFFICIAL RECORDS, CLARK COUNTY, NEVADA.

RECORD DRAWINGS NOT FOR CONSTRUCTION

1. TO ALTER THESE DOCUMENTS FOR ANOTHER PROJECT BY ANYONE OTHER THAN THE ORIGINAL ARCHITECT IS A VIOLATION OF NRS 623.
2. THIS RECORD DRAWING HAS BEEN PREPARED IN PART, BASED UPON INFORMATION FURNISHED BY THE GENERAL CONTRACTOR, WHILE THIS INFORMATION IS BELIEVED TO BE RELIABLE, THE DESIGN PROFESSIONAL CANNOT ASSURE ITS ACCURACY, AND THIS IS NOT RESPONSIBLE FOR THE ACCURACY OF THIS RECORD DRAWING OR FOR ANY ERRORS OR OMISSIONS WHICH MAY HAVE BEEN INCORPORATED INTO IT AS A RESULT. THE DESIGN PROFESSIONAL CANNOT AND DOES NOT WARRANT THEIR ACCURACY.
3. INFORMATION THAT MAY BE INCLUDED WOULD BE SIGNIFICANT CHANGES TO PLANTING OR IRRIGATION LAYOUT PLANS AND ASSOCIATED DRAWINGS. MINOR DIMENSION OR CONSTRUCTION DETAIL CHANGES MAY NOT BE INCLUDED.

Use of the information contained in this instrument for other than the specific purpose for which it was intended and for other than the client for whom it was prepared is forbidden unless expressly permitted in writing in advance by t&grf Civil Engineering, and t&grf Civil Engineering shall have no liability to any use of this information without their written consent.

NOTICE !

EXISTING UTILITIES ARE LOCATED ON THE PLANS FOR THE CONVENIENCE OF THE CONTRACTOR ONLY. THE ENGINEER BEARS NO RESPONSIBILITY FOR THE LOCATION OF UTILITIES SHOWN OR NOT SHOWN ON THE PLANS. THE CONTRACTOR SHALL NOTIFY ALL UTILITY COMPANIES BEFORE STARTING CONSTRUCTION AND IT SHALL BE THE RESPONSIBILITY OF THE CONTRACTOR TO VERIFY THE LOCATION OF ALL UTILITIES WITH THE UTILITY COMPANIES.

Avoid cutting underground utility lines. It's costly.
Call before you Dig
1-800-227-2600
UNDERGROUND SERVICE (USA)

Avoid overhead power line contact.
Call before you OVERHEAD
1-702-227-2929
NEVADA POWER ENVIRONMENT AND SAFETY SERVICES DEPARTMENT

REVISIONS

CONSULTANT

t&grf
CIVIL ENGINEERING
1231 DARMAK DRIVE
LAS VEGAS, NV 89102
PHONE: 702-870-2660
FAX: 702-870-6033

OWNER: CITY OF LAS VEGAS
DEPARTMENT OF PUBLIC WORKS
ARCHITECTURAL SERVICES

400 EAST STEWART AVENUE
LAS VEGAS, NEVADA 89101
PHONE: (702) 329-6535
FAX: (702) 384-4846
TDD: (702) 386-9108

DRAWN: gfr
FILE: C50004TRAILHEAD
DATE: SEPTEMBER 2006
SCALE: 1"=30'
SHEET NO: 061534111
CLV DWG NO: 65083
SHEET NO: C5.00

City of Las Vegas
Gilmore Cliff Shadows Trail Head
ALEXANDER ROAD PLAN AND PROFILE

108595