

FIXTURE TYPE B - POLE BASE DETAIL

APPROXIMATE QUANTITIES - SECURITY LIGHTING

22 ea.	18' Pole
22 ea.	150W HPS Fixture
2600 LF	#8 Wire
5200 LF	#4 Wire
440 LF	#10/2 LF w/grd
22 ea.	Double Fuseholders

ADDITIVE ITEM II

APPROXIMATE QUANTITIES

10 ea.	Size 3 1/2 Pullbox
3 ea.	Size 5 Pullbox
2 ea.	Size 66 Pullbox
1 ea.	NPCo Pullbox RS-81
1 ea.	NPCo Switch Manhole RS-100
7 ea.	32' Pole w/ 8' Double Arm
1 ea.	200A - 3 ϕ Service Pedestal
1 ea.	400A Switchboard
14 ea.	250W HPS Fixture
1 ea.	Transformer Pad RS-20
29 ea.	Pole Foundation
1 ea.	PhotoCell
1 ea.	Contacto
5760 LF	Trenching
5760 LF	Backfilling
5310 LF	1 1/4" Conduit
1190 LF	1 1/2" Conduit
480 LF	2" Conduit
30 LF	2 1/2" Conduit
480 LF	4" Conduit
750 LF	6" Conduit
480 LF	#12 Wire
350 LF	#10/2 LF w/grd
1000 LF	#8 Wire
2000 LF	#4 Wire
20 LF	#2 Wire
60 LF	#3/0 Wire
120 LF	#4/0 Wire
7 ea.	Double Fuseholders

BASE BID

APPROXIMATE QUANTITIES - TENNIS COURT LIGHTING

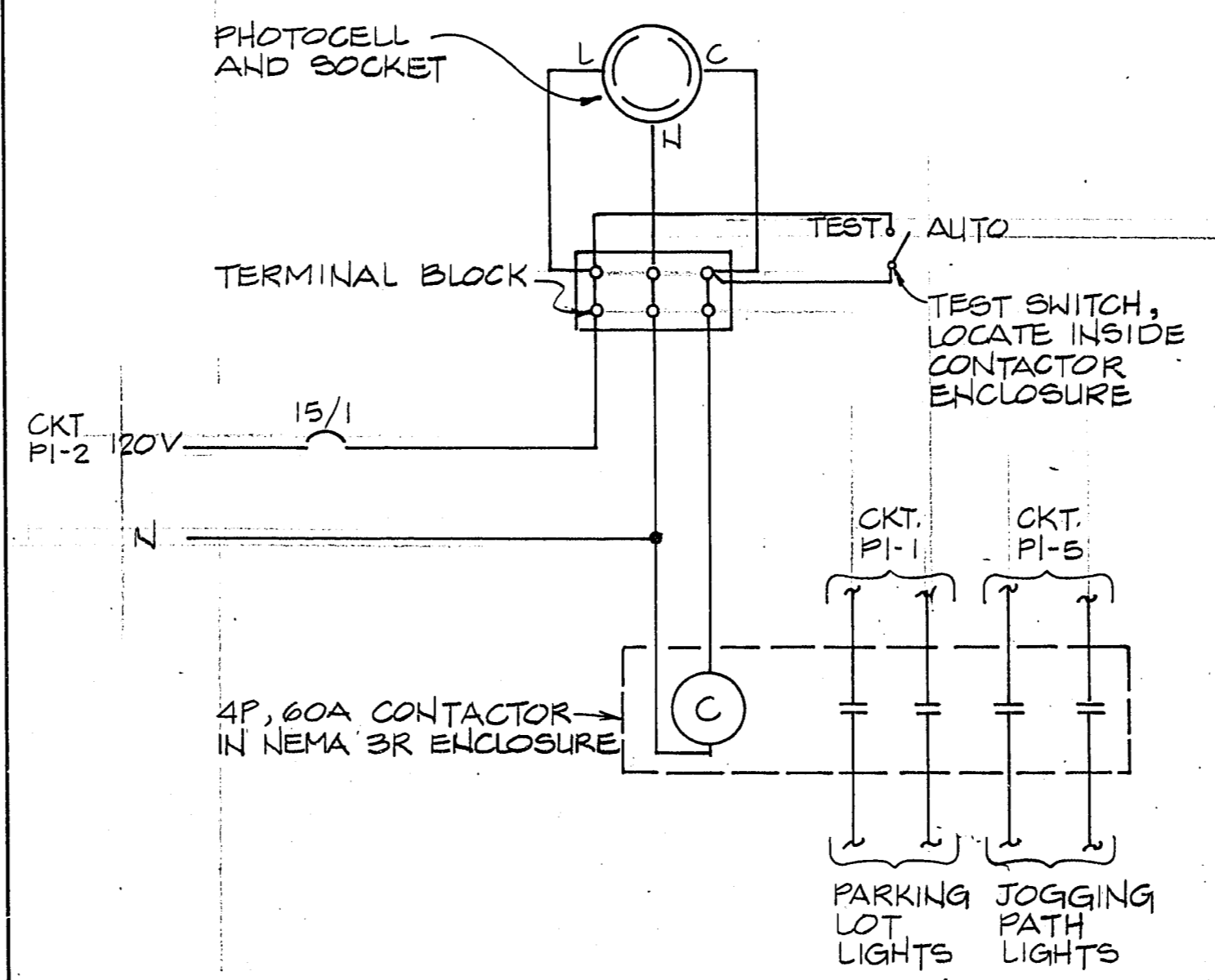
4 ea.	40' Pole
8 ea.	1000W HPS Fixture
4 ea.	Pole Foundation
1 ea.	PhotoCell
360 LF	Trenching
360 LF	Backfilling
350 LF	1 1/4" Conduit
10 LF	1 1/2" Conduit
360 LF	#12 Wire
160 LF	#10/2 UF w/grd
360 LF	#8 Wire
2160 LF	#6 Wire
1460 LF	#1 Wire
4 ea.	Double Fuseholders
1 ea.	Control Panel

ADDITIVE ITEM IV

LIGHTING FIXTURE SCHEDULE

FIXT ID	TYPE	MANUFACTURER AND CATALOG NO.	NO. LAMPS	WATTS	TYPE	CKT VLTG	REMARKS AND MOUNTING
A	250 W HPS ON 30' LIGHTING STANDARD	POLE AND FOUNDATION PER UNIFORM STANDARD DRAWINGS	1	250	LU250	240	DOUBLE ARM WITH 2" PIPE ARM. INSTALL PER UNIFORM STANDARD DRAWINGS NO. 310
B	150 W HPS ON 18' LIGHTING STANDARD	SPALDING VA-150-HPS W/18RAPVA POLE	1	150	LU150/55	240	
C	1000 W HPS ON 35' LIGHTING POLE	GARDCO FORM 16 H262FM-240-1000 HPS-BRA-FF (IN BASE OF POLE)	1	1000	LU1000	240	TWIN MOUNT FIXTURE ADAPTER ON ROUND TAPERED ALUMINUM POLE W/BRONZE FINISH

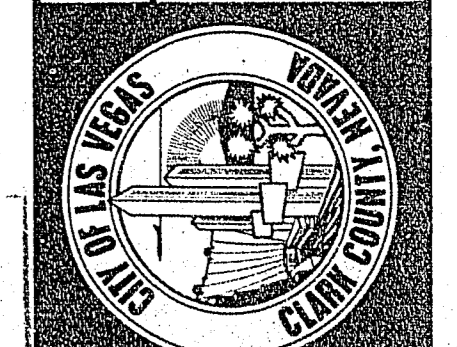
Thomas J. Kost
3-28-89



PHOTOELECTRIC CONTROL WIRING DIAGRAM

POLE SPACE ckt	CIRCUIT USE	CKT BKR RATING	CONNECTED LOAD VA	CKT BKR RATING	CIRCUIT USE	POLE SPACE ckt
1	1 PARKING LOT LGTS *1	30/2	2190	---	15 CONTACTOR CONTROL	2 2
3	X	X	---	2190	15/G SPRAY POOL	4 4
5	5 JOGGING PATH LGTS*1	30/2	2160	---	SO	6
7	X	X	---	2160	SO	8
9	9 TENNIS COURT LIGHTS	50/2	4420	---	SO	10
11	X	X	---	4420	SO	12
13	SO	---	---	---	SO	14
15	SO	---	---	---	SO	16
17	SO	---	---	---	SO	18
19	SO	---	---	---	SO	20
21	SO	---	---	---	SO	22
23	SO	---	---	---	SO	24
25	---	---	---	---	---	26
27	---	---	---	---	---	28
29	---	---	---	---	---	30
31	---	---	---	---	---	32
33	---	---	---	---	---	34
35	---	---	---	---	---	36
37	---	---	---	---	---	38
39	---	---	---	---	---	40
41	---	---	---	---	---	42
*1 THRU CONTACTOR			8770	8770 17540		

CONTRACT DRAWING
APR 3 1989



Drawing no. 650.291
E3
10

Department of Public Works
 Engineering Design Division
 ELECTRICAL
 DETAILS & SCHEDULES
 PHASE I CONSTRUCTION
 GOWAN PARK
 PHASE I SITE

Scale (h)	Fid. bk. no.	Design by	Scale (v)	W.A.	Date	Drawn by	Revisions	Date
		TOM KROB	1/16" = 1' - 0"		3-1-89	MARILYN		