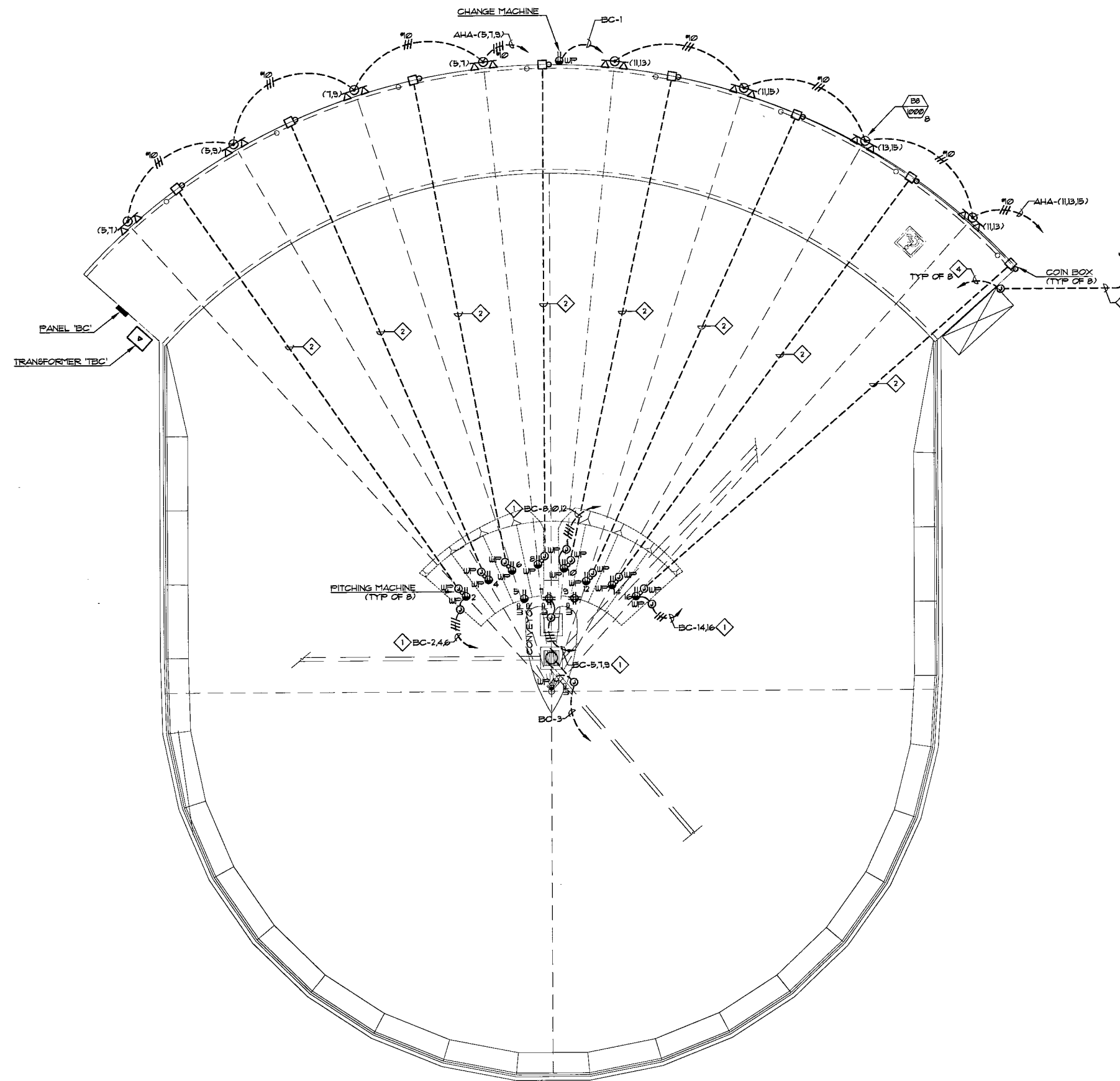


GENERAL NOTES:

1. VERIFY ALL CONTROL CONDUIT/CONDUCTOR INSTALLATION WITH EQUIPMENT SUPPLIER AND APPROVED EQUIPMENT SUBMITTALS PRIOR TO ROUGH-IN.

SHEET NOTES:

- ◇ EXTEND AND CONNECT CIRCUITING FROM JUNCTION BOX TO LIGHTING FIXTURES/RECEPTACLES IN AREA WITH SAME CIRCUIT NUMBERS, ROUTE #2 CONDUCTORS (MINIMUM) THROUGHOUT, UNLESS NOTED OTHERWISE.
- ◇ 1/2" - 5/8" CONTROL CONDUCTORS.
- ◇ 1" CONDUIT FROM EXTERIOR JUNCTION BOX TO CONTROL STATION IN ADMINISTRATION BUILDINGS. PROVIDE CONTROL CONDUCTORS AS PER INSTALLED EQUIPMENT APPROVED SHOP DRAWINGS.
- ◇ 1/2" CONDUIT FROM EXTERIOR JUNCTION BOX TO PITCHING MACHINE CONTROL CONDUCTORS AS PER INSTALLED EQUIPMENT APPROVED SHOP DRAWINGS.



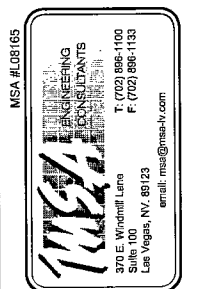
123239

ENLARGED BATTING CAGE ELECTRICAL PLAN
 1/8" = 1'-0"
 NORTH

architecture
interiors
planning
engineering

Dekker Perich Sabatini

6860 Bermuda Road, Ste. 100
 Las Vegas, Nevada 89119
 702.436.1000
 fax 436.1050
 info@dpsdesign.org



**CITY OF LAS VEGAS
 FREEDOM PARK RENOVATION
 850 NORTH MOJAVE, LAS VEGAS, NEVADA 89101
 ENLARGED BATTING CAGE ELECTRICAL PLAN**

Russ Manager
 Roche Constructors, Inc.



**RECORD
 DRAWINGS**
 01-31-2010

OWNER: CITY OF LAS VEGAS
 DEPARTMENT OF PUBLIC WORKS
 ARCHITECTURAL SERVICES

400 EAST STEWART AVENUE
 LAS VEGAS, NEVADA 89101
 PHONE: (702) 228-6232
 FAX: (702) 384-4848
 TDD: (702) 386-9100

DATE	JANUARY 31, 2010
SCALE	AS NOTED
REV NO	070354
CITY DRAW NO	650.22-18
SHEET NO	E3-02

RECORD DRAWING

THESE MODIFIED OR RECORD DRAWINGS HAVE BEEN PREPARED, IN WHOLE OR IN PART, ON THE BASIS OF INFORMATION COMPILED AND FURNISHED BY THE CONTRACTOR OR OTHERS INVOLVED WITH THE PROJECT. MSA ENGINEERING CONSULTANTS IS NOT RESPONSIBLE FOR ANY ERRORS OR OMISSIONS WHICH HAVE BEEN INCORPORATED INTO THIS DOCUMENT AS A RESULT. CAREFUL EXAMINATION OF ACTUAL EXISTING CONDITIONS SHOULD BE UNDERTAKEN PRIOR TO EXCAVATION, CUTTING, MODIFICATION, OR CONNECTION OF SUBSEQUENT CONSTRUCTION.

THESE DOCUMENTS ARE PREPARED FROM DATA AND INFORMATION SUPPLIED BY OTHERS. DEKKERPERICH/SABATINI, LTD. DOES NOT CERTIFY OR WARRANT IN ANY MANNER THE ACCURACY OR COMPLETENESS OF RECORD DOCUMENTS. DEKKERPERICH/SABATINI, LTD. ADVISES ANYONE USING RECORD DOCUMENTS, FOR ANY PURPOSE, TO INDEPENDENTLY VERIFY THE ACCURACY AND COMPLETENESS OF THE INFORMATION PRESENTED, AND TO VERIFY THE BUTRABILITY OF THE INFORMATION FOR THE PURPOSE FOR WHICH THEY INTEND TO USE THE INFORMATION. DEKKERPERICH/SABATINI, LTD. IS NOT RESPONSIBLE FOR ANY PROBLEMS OR RELATED COSTS THAT MAY ARISE OUT OF THE USE OF RECORD DOCUMENTS.