

GENERAL NOTES:

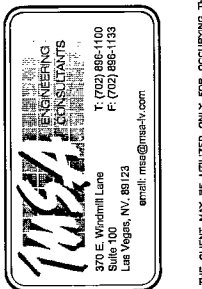
1. MINIMUM EQUIPMENT A.I.C. RATINGS ARE 14K A.I.C. • 480/277V AND 18K A.I.C. • 208/220V UNLESS OTHERWISE NOTED.
2. THE DESIGN PROFESSIONAL HAS PERFORMED ALL REQUIRED SHORT CIRCUIT CALCULATIONS AND THE A.I.C. RATINGS INDICATED FOR EACH DEVICE ARE ADEQUATE TO PROTECT THE EQUIPMENT AND THE ELECTRICAL SYSTEM.
3. THE DESIGN PROFESSIONAL HAS PERFORMED ALL THE REQUIRED VOLTAGE DROP CALCULATIONS FOR ALL BRANCH CIRCUITS AND FEEDERS PER 2008 NATIONAL ELECTRICAL CODE ARTICLE 210.6(A)(1), FPN NO. 4.
4. PANELBOARD LOAD SUMMARIES INCLUDE ADDITIONAL 25% OF ALL CONTINUOUS AND LARGEST MOTOR LOADS WHERE APPLICABLE.
5. REFERENCE SHEET E0-03A FOR ADDITIONAL INFORMATION.

SHEET NOTES:

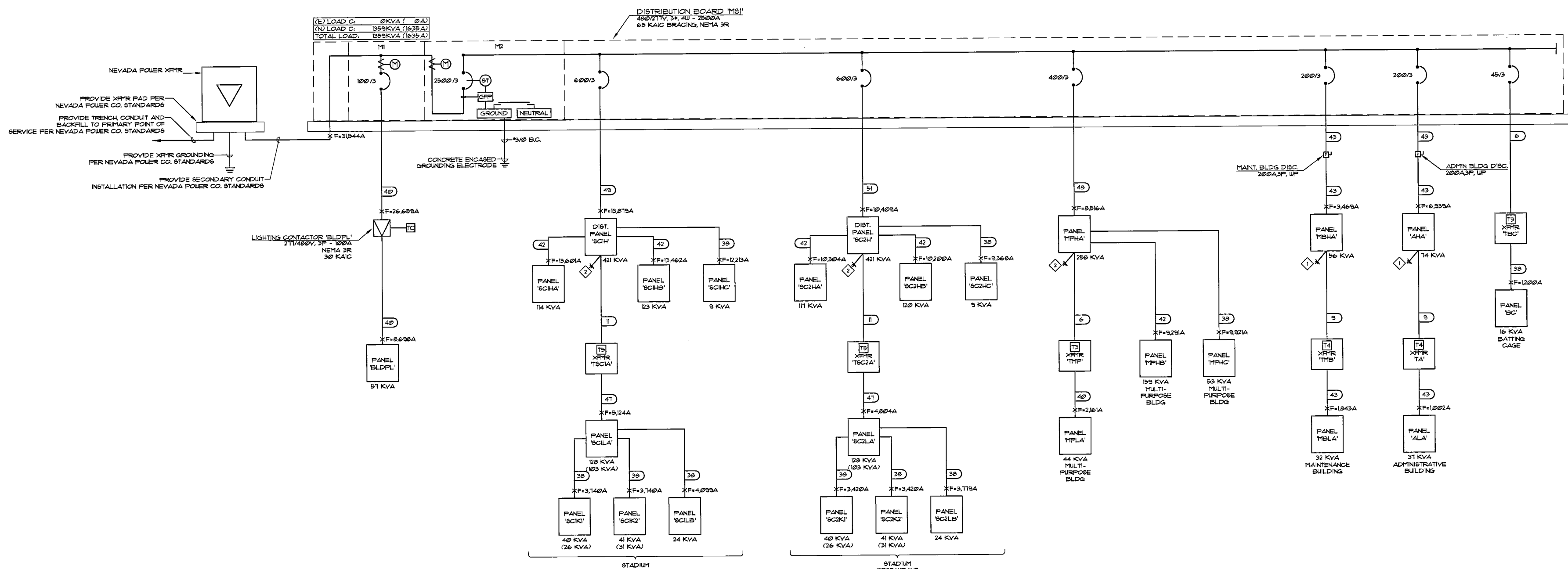
- 1"=1M GND, THIN/THIN, CU
- 2"=1M GND, THIN/THIN, CU



Dekker Perich Sabatini
 6860 Bermuda Road, Ste. 100
 Las Vegas, Nevada 89119
 702-436-1006
 fax 436-1050
 info@dpdesignlog.com



MSA ENGINEERING CONSULTANTS
 370 E. Wootton Lane
 Las Vegas, NV 89123
 Tel: 702-886-1100
 Fax: 702-886-1133
 email: msa@msa-hv.com



SINGLE LINE DIAGRAM
 E0-03B NTS

CITY OF LAS VEGAS
FREEDOM PARK RENOVATION
 850 NORTH MOJAVE, LAS VEGAS, NEVADA 89101
SINGLE LINE DIAGRAM

Russ Manger
 Russ Manger
 Roche Constructors, Inc.
 PROFESSIONAL ENGINEER-STATE OF NEVADA
 DAVID J. MELROY III
 No. 020711
 ELECTRICAL
 No. 010379
 JAN 31 2010

RECORD DRAWINGS
 01-31-2010

OWNER: CITY OF LAS VEGAS
 DEPARTMENT OF PUBLIC WORKS
 ARCHITECTURAL SERVICES
 420 EAST STEWART AVENUE
 LAS VEGAS, NEVADA 89101
 PHONE: (702) 229-6333
 FAX: (702) 384-6843
 TDD: (702) 384-6108

DATE: JANUARY 31, 2010
 SCALE: AS NOTED
 SHEET NO: 070354
 SHEET NO: 650.22-18
E0-03B

RECORD DRAWING
 THESE MODIFIED OR RECORD DRAWINGS HAVE BEEN PREPARED, IN WHOLE OR IN PART, ON THE BASIS OF INFORMATION COMPILED AND FURNISHED BY THE CONTRACTOR OR OTHERS INVOLVED WITH THE PROJECT. MSA ENGINEERING CONSULTANTS IS NOT RESPONSIBLE FOR ANY ERRORS OR OMISSIONS WHICH HAVE BEEN INCORPORATED INTO THIS DOCUMENT AS A RESULT. CAREFUL EXAMINATION OF ACTUAL EXISTING CONDITIONS SHOULD BE UNDERTAKEN PRIOR TO EXCAVATION, CUTTING, MODIFICATION, OR CONNECTION OF SUBSEQUENT CONSTRUCTION.

123225