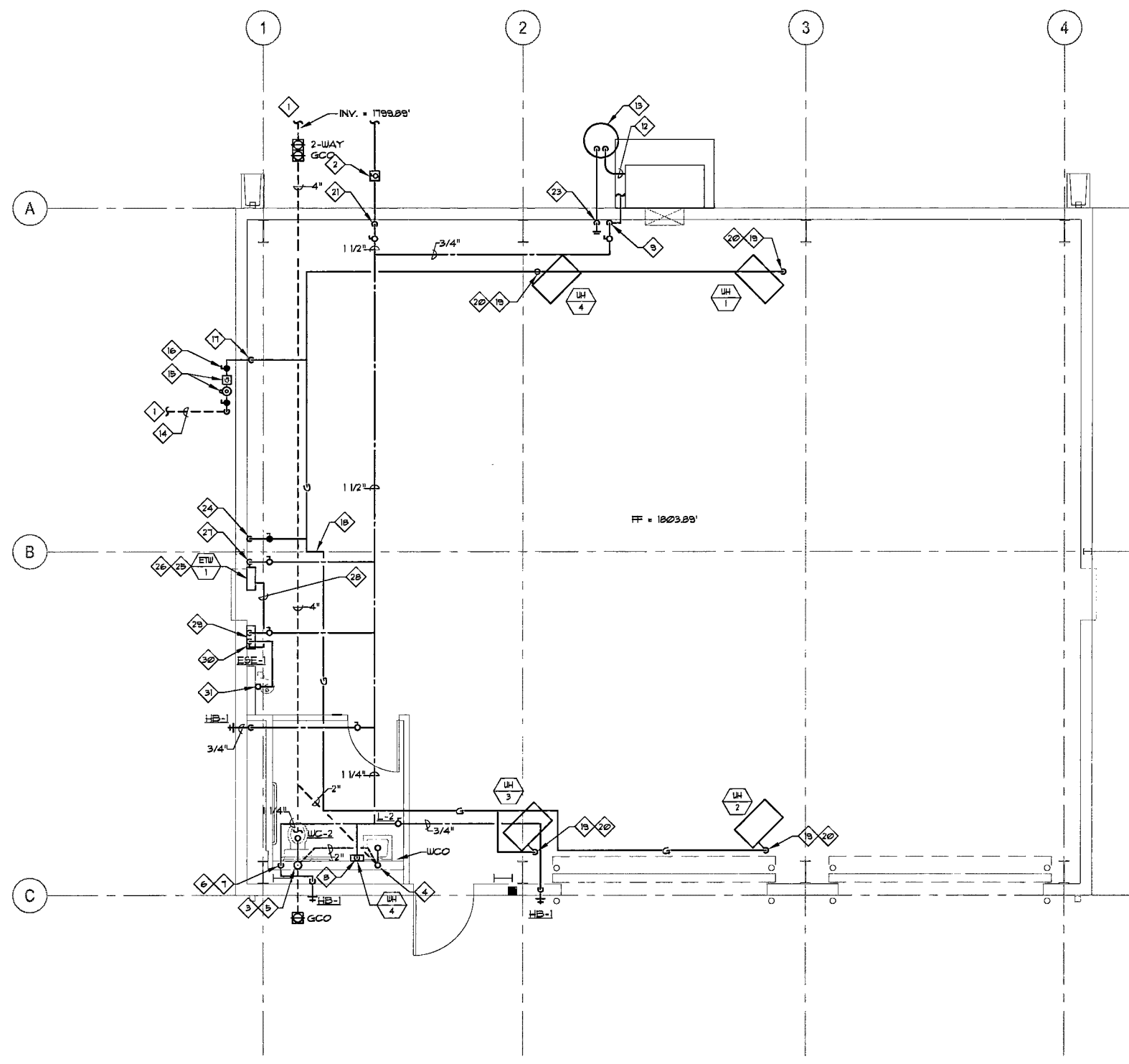


125219



MAINTENANCE BUILDING PLUMBING FLOOR PLAN
 1/4" = 1'-0"
 MP-1

GENERAL NOTES:

1. ALL WATER PIPING SHALL BE INSTALLED ON THE INTERIOR SIDE OF THE BUILDING.
2. THE CUTTING, NOTCHING AND BORING OF HOLES IN FLOOR JOIST AND WALL STUDS SHALL BE IN ACCORDANCE WITH THE LATEST APPROVED EDITION OF THE INTERNATIONAL BUILDING CODE.
3. CONTRACTOR SHALL BE RESPONSIBLE FOR THE COORDINATION OF ALL PLUMBING ROUGH-IN LOCATIONS. REFER TO ARCHITECTURAL DRAWINGS FOR FIXTURES AND EQUIPMENT LOCATIONS.
4. CONTRACTOR SHALL BE RESPONSIBLE FOR ALL CUTTING AND PATCHING AS REQUIRED TO ACCOMMODATE HIS WORK.
5. ALL SANITARY DRAINAGE PIPING SHALL BE SLOPED AT 1/4" PER FOOT.
6. PLUMBING CONTRACTOR SHALL COORDINATE ROUTING OF PIPING WITH ALL OTHER TRADES PRIOR TO COMMENCING WORK.
7. ALL PLUMBING FIXTURES SHALL BE WATER CONSERVATION TYPE AS MANDATED BY LOCAL BUILDING DEPARTMENT.
8. ALL WATER CLOSETS DESIGNATED AS ACCESSIBLE SHALL BE INSTALLED SUCH THAT THE ACTUATOR IS OPERABLE FROM THE WIDE SIDE OF THE WATER CLOSET.
9. PRIOR TO INSTALLATION OF SEWER AND WATER PIPING BELOW GRADE COORDINATE EXACT LOCATIONS AND DEPTHS OF BURIAL WITH CIVIL AND FOUNDATION DRAWINGS AND CORRESPONDING ENGINEERS.
10. REFER TO THE PLUMBING DETAILS THAT APPLY TO THE WORK ON THIS DRAWING. THESE DETAILS PROVIDE GUIDANCE AS TO INSTALLATION INTENT AND DO NOT NECESSARILY SHOW ALL COMPONENTS REQUIRED.

SHEET NOTES:

- 1 REFER TO CIVIL DRAWINGS FOR CONTINUATION.
- 2 PROVIDE SHUT-OFF VALVE WITH YARD BOX.
- 3 3" WASTE AND 2" VENT UP.
- 4 2" WASTE AND 2" VENT UP.
- 5 3" VENT UP THROUGH ROOF.
- 6 1 1/4" COLD WATER DOWN TO ETW-1.
- 7 3/4" COLD WATER DOWN TO WC-2 AND HB-1.
- 8 3/4" COLD WATER DOWN TO WC-4, EXTEND 1/2" COLD AND HOT WATER TO LC-2.
- 9 3/4" COLD WATER DROP ALONG WALL TO 3" AFF. PROVIDE SHUT-OFF VALVE AND ROUTE THRU WALL TO EG-1. MAKE UP WATER SUPPLY CONNECTION.
- 10 NOT USED.
- 11 3/4" DRAIN DOWN.
- 12 ROUTE LINE SIZE DRAIN FROM EG-1 INTO GRAVEL DRAIN PIT.
- 13 GRAVEL DRAIN PIT. REFER TO DETAIL H/P-03.
- 14 GAS SUPPLY FROM STREET MAIN UP TO GAS METER PROVIDED BY SOUTHWEST GAS CORP.
- 15 GAS METER, PRESSURE REGULATOR WITH ASSOCIATED VALVES AND FITTINGS FURNISHED AND INSTALLED BY SOUTHWEST GAS CORP.
- 16 ROUTE LOW PRESSURE GAS PIPING FROM GAS METER INTO BUILDING GAS PIPING SYSTEM. PROVIDE SHUT-OFF VALVE AFTER GAS METER.
- 17 GAS UP IN CHASE TO UPPER CEILING SPACE, INSTALL TO UNDERSIDE OF ROOF FRAMING AS POSSIBLE.
- 18 SWING JOINT AT ROOF PEAK.
- 19 3/4" GAS SUPPLY DROP WITH 6" CAPPED DIRT LEG BELOW.
- 20 PROVIDE MANUAL SHUT-OFF VALVE AND GROUND JOINT UNION BEFORE CONNECTING TO HEATER'S EXTENDED GAS PIPE NIPPLE. LINE SIZE HORIZONTAL RUN TO HEATER'S GAS INLET CONNECTION.
- 21 1 1/2" CW UP IN WALL TO UPPER CEILING SPACE.
- 22 NOT USED.
- 23 NOT USED.
- 24 1" GAS DOWN ALONG WALL, ROUTE 3/4" GAS SUPPLY WITH SHUT-OFF VALVE AND DIRT LEG TO EACH OF ETW-1 / ETW-2.
- 25 WALL MOUNTED GAS FIRED TANKLESS WATER HEATER. REFER TO DETAIL N/P-03.
- 26 PROVIDE PRESSURE RELIEF VALVE AT HW OUTLET OF EACH TANKLESS WATER HEATER TO BLDG. EXTERIOR. TERMINATE DISCHARGE DOWN AT 6" AFS.
- 27 1 1/2" CW HEADER DOWN ALONG WALL, ROUTE 3/4" CW WITH SHUT-OFF VALVE FROM HEADER TO EACH ETW-1.
- 28 ROUTE 3/4" HW FROM ETW-1 TO 1" HW MANIFOLD AND CONNECT TO HW INLET OF TV-2.
- 29 3/4" CW DOWN TO INLET OF TV-2. PROVIDE ADAPTER FITTING TO SUIT INLET SIZE.
- 30 ROUTE 3/4" TEPID WATER FROM TV-2 TO ESE-1. PROVIDE ADAPTER FITTING TO RESPECTIVE OUTLET / INLET CONNECTIONS.
- 31 3/4" TW DOWN TO ESE-1.

REVISION	

Decker Perich Sabatini
 architects
 interior
 planning
 engineering

6880 Bermuda Road, Ste. 100
 Las Vegas, Nevada 89119
 702.438.1006
 fax 438.1050
 info@dpdesign.org

THE MSA GROUP
 MSA ENGINEERING CONSULTANTS
 3910 E. McDowell Lane
 Las Vegas, NV 89123
 P: (702) 886-1100
 F: (702) 886-1103
 email: msagroup@msa-h.com

**CITY OF LAS VEGAS
 FREEDOM PARK RENOVATION
 850 NORTH MOJAVE, LAS VEGAS, NEVADA 89101
 MAINTENANCE BUILDING
 PLUMBING FLOOR PLAN**

Russ Manger
 Russ Manger
 Rocio Constructors, Inc.

PROFESSIONAL ENGINEER STATE OF NEVADA
 BEHAVIORAL ENGINEERING MECHANICAL
 No. 015976
 JAN 21 2010

RECORD DRAWINGS
 01-31-2010

OWNER: CITY OF LAS VEGAS
 DEPARTMENT OF PUBLIC WORKS
 ARCHITECTURAL SERVICES

400 EAST STEWART AVENUE
 LAS VEGAS, NEVADA 89101
 PHONE: (702) 226-6335
 FAX: (702) 264-6866
 TDD: (702) 386-9108

RECORD DRAWING

THESE MODIFIED OR RECORD DRAWINGS HAVE BEEN PREPARED, IN WHOLE OR IN PART, ON THE BASIS OF INFORMATION COMPILED AND FURNISHED BY THE CONTRACTOR OR OTHERS INVOLVED WITH THE PROJECT. MSA ENGINEERING CONSULTANTS IS NOT RESPONSIBLE FOR ANY ERRORS OR OMISSIONS WHICH HAVE BEEN INCORPORATED INTO THIS DOCUMENT AS A RESULT. CAREFUL EXAMINATION OF ACTUAL EXISTING CONDITIONS SHOULD BE UNDERTAKEN PRIOR TO EXCAVATION, CUTTING, MODIFICATION, OR CONNECTION OF SUBSEQUENT CONSTRUCTION.

MSA GROUP
 ENGINEERING CONSULTANTS

DATE	JANUARY 31, 2010
SCALE	AS NOTED
NO	070354
REV NO	650.22-18
SHEET NO	MP-1

DRAWINGS AS INSTRUMENTS OF SERVICE ARE THE PROPERTY OF THE DESIGN PROFESSIONAL. WHOLE OR IN PART WITHOUT WRITTEN CONSENT IS STRICTLY PROHIBITED. COPIES OF THE DRAWINGS AND INSTRUMENTS OF SERVICE MAY BE UTILIZED ONLY FOR RECORDING THE PROJECT FOR WHICH THEY WERE PREPARED AND NOT FOR THE CONSTRUCTION OF ANY OTHER PROJECT. A. S. 633.290 RECORD DOCUMENTS ARE PREPARED FROM DATA AND INFORMATION SUPPLIED BY OTHERS. DECKERPERICHSABATINI, LTD. DOES NOT CERTIFY OR WARRANT IN ANY MANNER THE ACCURACY OR COMPLETENESS OF RECORD DOCUMENTS. DECKERPERICHSABATINI, LTD. ADVISES ANYONE USING RECORD DOCUMENTS FOR ANY PURPOSE, TO INDEPENDENTLY VERIFY THE ACCURACY AND COMPLETENESS OF THE INFORMATION PRESENTED, AND TO VERIFY THE SUITABILITY OF THE INFORMATION FOR THE PURPOSE FOR WHICH THEY INTEND TO USE THE INFORMATION. DECKERPERICHSABATINI, LTD. IS NOT RESPONSIBLE FOR ANY PROBLEMS OR RELATED COSTS THAT ARISE OUT OF THE USE OF RECORD DOCUMENTS.