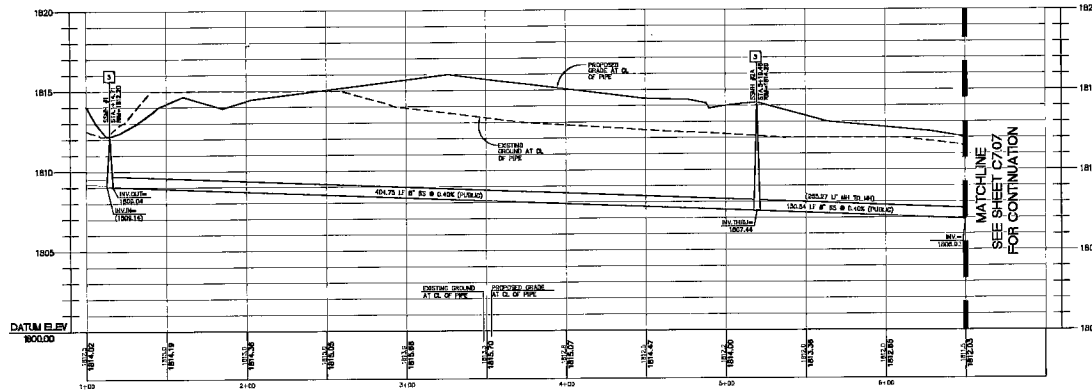


SANITARY SEWER 1 - PLAN VIEW
HORIZONTAL SCALE: 1" = 30'

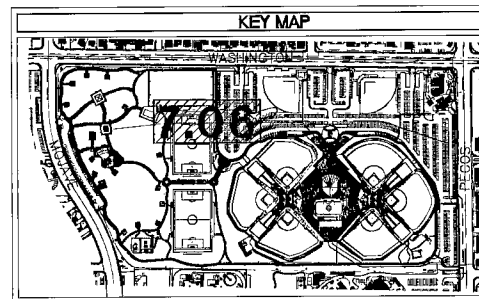
MATCHLINE
SEE SHEET C707
FOR CONTINUATION



SANITARY SEWER 1 - PROFILE VIEW
HORIZONTAL SCALE: 1" = 30'
VERTICAL SCALE: 1" = 3'

MATCHLINE
SEE SHEET C707
FOR CONTINUATION

- SEWER NOTES**
1. MATERIAL: 18" PVC SANITARY SEWER
 2. CONTINGENCY SANITARY SEWER CLEARANCE FOR PIPE BELOW TO BE SHEET C708
 3. DETERMINE SANITARY SEWER MANHOLE PER PERMITS AND SHEET C707



BENCHMARK
CITY OF LAS VEGAS NORTH AND SOUTH PLATE IN TOP OF
CIVIL ENGINEERING CENTER OF INGENIERS AND ARCHITECTS
ELEVATION (FEET) = 1804.47
IN JANU 2004 ELEVATION (METERS) = 540.84

BASIS OF BEARING
THE BASIS OF BEARING FOR THIS PROJECT IS GRID NORTH
AS SHOWN BY THE PLUMB OBSERVER'S SYSTEM OF 1983
INCLIN. LAST TIME (2001) REFERENCED BY ITS CONTROL
POINTS. THIS BASIS WAS BY THE USE OF STATION ON
THE MAP TYPING TO BE BY THE SURVEY PAGE 24
OPTIONAL RECORDS, CLARK COUNTY, NEVADA.

BENCH MARK
CITY OF LAS VEGAS NORTH AND SOUTH PLATE IN TOP OF
CIVIL ENGINEERING CENTER OF INGENIERS AND ARCHITECTS
ELEVATION (FEET) = 1804.47
IN JANU 2004 ELEVATION (METERS) = 540.84

DATE OF BEARING
FEBRUARY 13, 2008

DATE OF SURVEY
11-20-07

DATE OF PLOTTING
07/24/08

DATE OF PRINTING
08/22/08

DATE OF REVIEW
08/22/08

100% OWNER REVIEW

**CITY OF LAS VEGAS
FREEDOM PARK RENOVATION
850 NORTH MOHAVE, LAS VEGAS, NEVADA 89101
SANITARY SEWER PLAN AND PROFILE ONE**

**Dektor
Perich
Sabatini**
ARCHITECTURAL SERVICES
4100 S. Rainbow Blvd., Ste. 100
Las Vegas, Nevada 89119
702.442.1200
Fax: 702.442.1200
17@dektorsg.com

PBSJ
ARCHITECTURAL SERVICES
4100 S. Rainbow Blvd.
Las Vegas, Nevada 89119
702.442.1200
Fax: 702.442.1200
17@dektorsg.com

100% OWNER REVIEW

**CITY OF LAS VEGAS
DEPARTMENT OF PUBLIC WORKS
ARCHITECTURAL SERVICES**

DATE OF SURVEY
11-20-07

DATE OF PLOTTING
07/24/08

DATE OF PRINTING
08/22/08

DATE OF REVIEW
08/22/08

08/22/08 08:00:00

C7.06

121 244