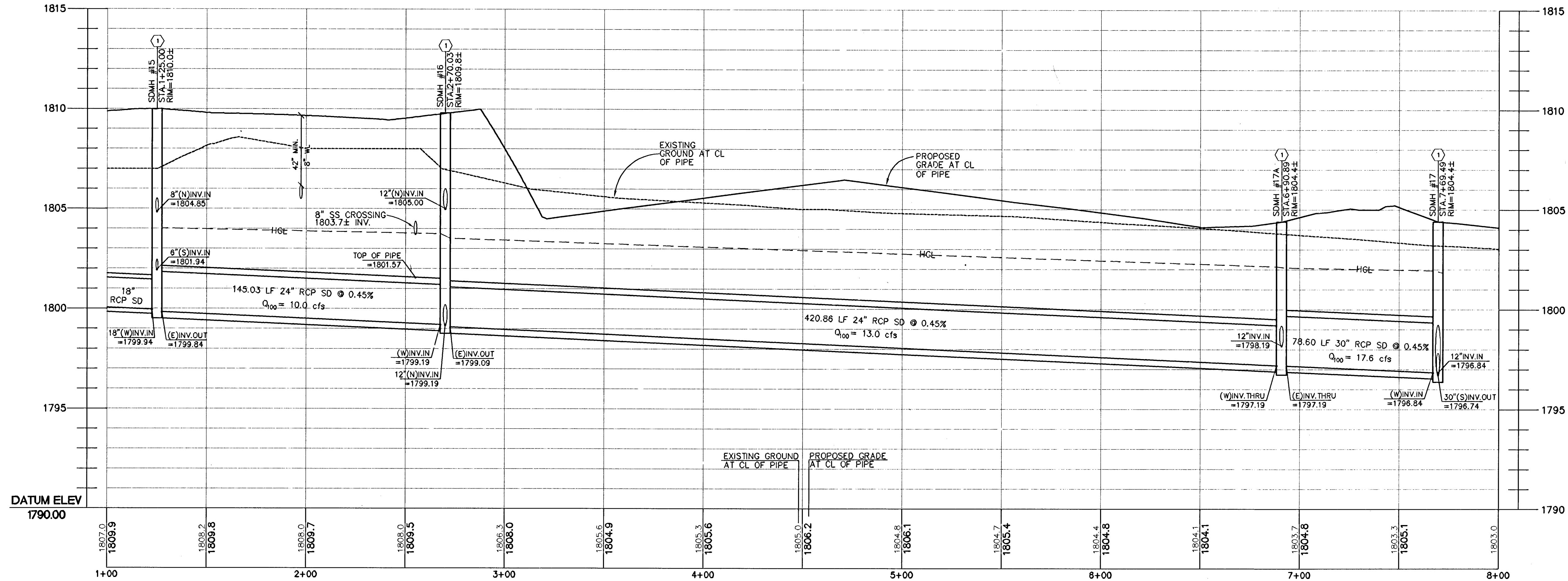
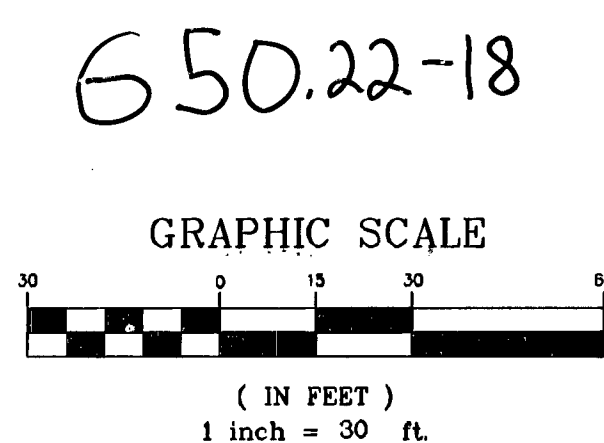
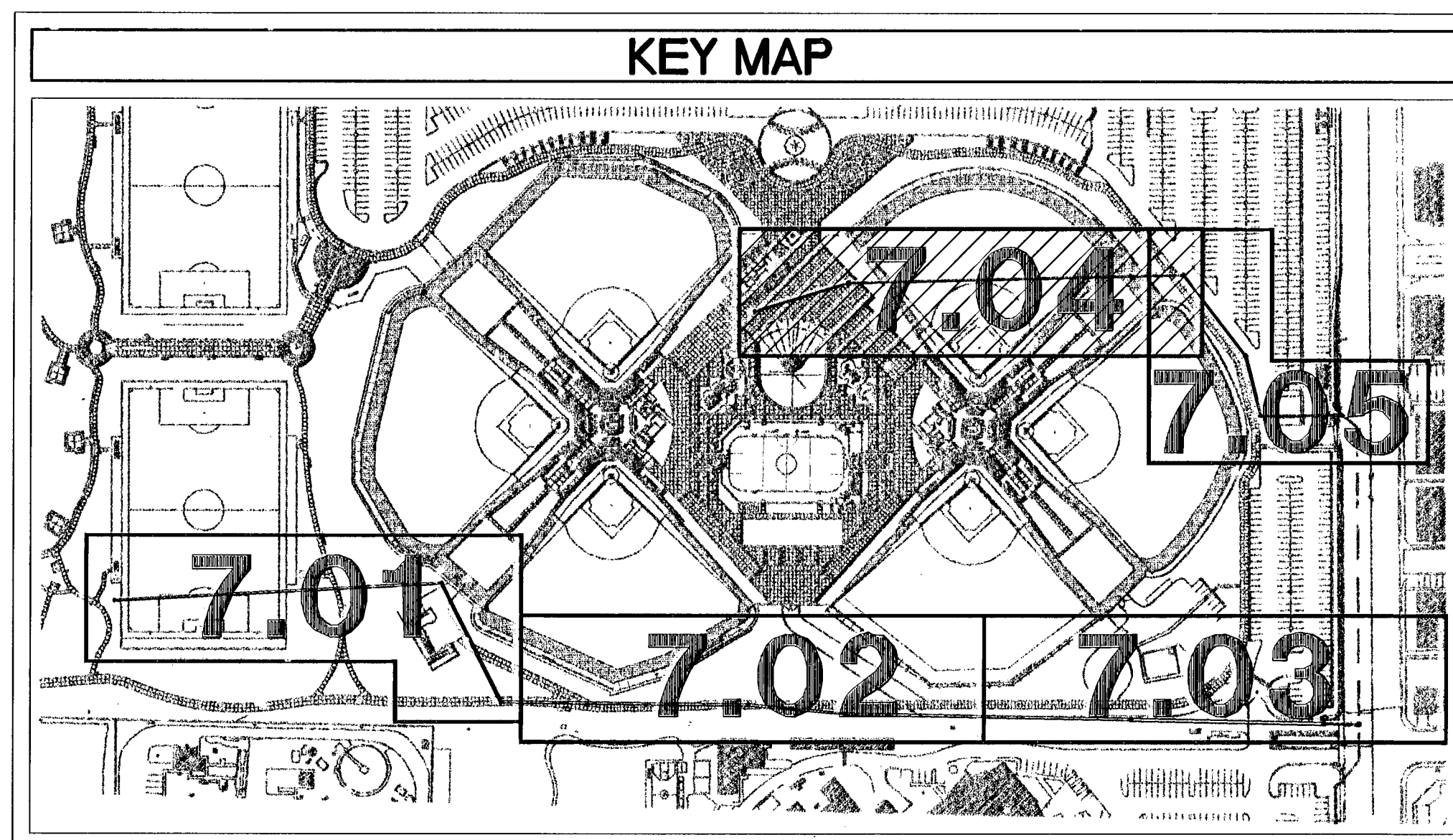


STORM DRAIN 4 - PLAN VIEW
HORIZONTAL SCALE: 1" = 30'



STORM DRAIN 4 - PROFILE VIEW
HORIZONTAL SCALE: 1" = 30'
VERTICAL SCALE: 1" = 3'

STORM DRAIN CONSTRUCTION NOTES
 ① CONSTRUCT 60" TYPE III MANHOLE PER DETAIL ON SHEET C2.08
 NOTE:
 USE CLASS III RCP PIPE UNLESS OTHERWISE NOTED.



Call before you Underground
 1-702-227-7811
 1-702-451-3000
 1-702-451-3000

Call before you Overhead
 1-800-227-2800
 1-702-227-2829
 1-702-451-3000

BENCHMARK
 CITY OF LAS VEGAS RIVET AND ROUND PLATE IN TOP OF CURB, SOUTHWEST CORNER OF WASHINGTON AND MOJAVE, T20S, R60E.
 BM 2LV01 2504 ELEVATION FEET=1819.41
 ELEVATION METERS=554.56 NAVD88

BASIS OF BEARING
 THE BASIS OF BEARINGS FOR THIS PROJECT IS GRID NORTH AS DEFINED BY THE NEVADA COORDINATE SYSTEM OF 1983 (NCS83), EAST ZONE, (2701), DETERMINED BY GIS CONTROL POINTS, "CC-GIS 806" AND "CC-GIS 808" AS SHOWN ON THE MAP THEREOF IN FILE 88 OF SURVEYS, PAGE 53, OFFICIAL RECORDS, CLARK COUNTY, NEVADA.

I CERTIFY THAT THIS GRADING PLAN IS IN CONFORMANCE WITH THE APPROVED DRAINAGE STUDY ON FILE AT THE CITY OF LAS VEGAS FOR THIS PROJECT DS4326
 Corey A. Lieber, P.E. No. 015875 DATE 12-1-08

REVISIONS

Dekker Perich Sabatini
 architecture
 interiors
 planning
 engineering
 6860 Bermuda Road, Ste. 100
 Las Vegas, Nevada 89119
 702.438.1006
 fax 438.1050
 Info@dpsdesign.org

PBSJ
 ENGINEERING PLANNING SURVEYING
 CONSTRUCTION SERVICES
 2270 Corporate Circle
 Suite 100
 Henderson, Nevada 89074
 Telephone: 702/263-7275
 Fax: 702/263-7200

CITY OF LAS VEGAS
 FREEDOM PARK RENOVATION
 850 NORTH MOJAVE, LAS VEGAS, NEVADA 89101
 STORM DRAIN PLAN AND PROFILE FOUR

REGISTERED PROFESSIONAL ENGINEER
 COREY A. LIEBER
 CIVIL
 No. 015875
 12-1-08

OWNER: CITY OF LAS VEGAS
 DEPARTMENT OF PUBLIC WORKS
 ARCHITECTURAL SERVICES

400 EAST STEWART AVENUE
 LAS VEGAS, NEVADA 89101
 PHONE: (702) 229-6535
 FAX: (702) 384-4846
 TDD: (702) 386-9108

DRAWN FILE 3008-C7.04P
 DATE DECEMBER 1, 2008
 SCALE 1" = 30'
 BID NO. 070354
 CIV. EWS NO. 650.22-18
 H30306
 SHEET 68 OF 78
C7.04

115170

DRAWINGS AND INSTRUMENTS OF SERVICE ARE THE PROPERTY OF THE DESIGN PROFESSIONAL WHOSE STAMP OF CERTIFICATION APPEARS ON THE DRAWINGS AND SPECIFICATIONS. ANY USE OR REPRODUCTION IN WHOLE OR IN PART WITHOUT WRITTEN CONSENT IS STRICTLY PROHIBITED. COPIES OF THE DRAWINGS AND SPECIFICATIONS RETURNED BY THE CLIENT MAY BE UTILIZED ONLY FOR OCCUPANCY OF THE PROJECT FOR WHICH THEY WERE PREPARED AND NOT FOR THE CONSTRUCTION OF ANY OTHER PROJECT. N.A.C. 623.390