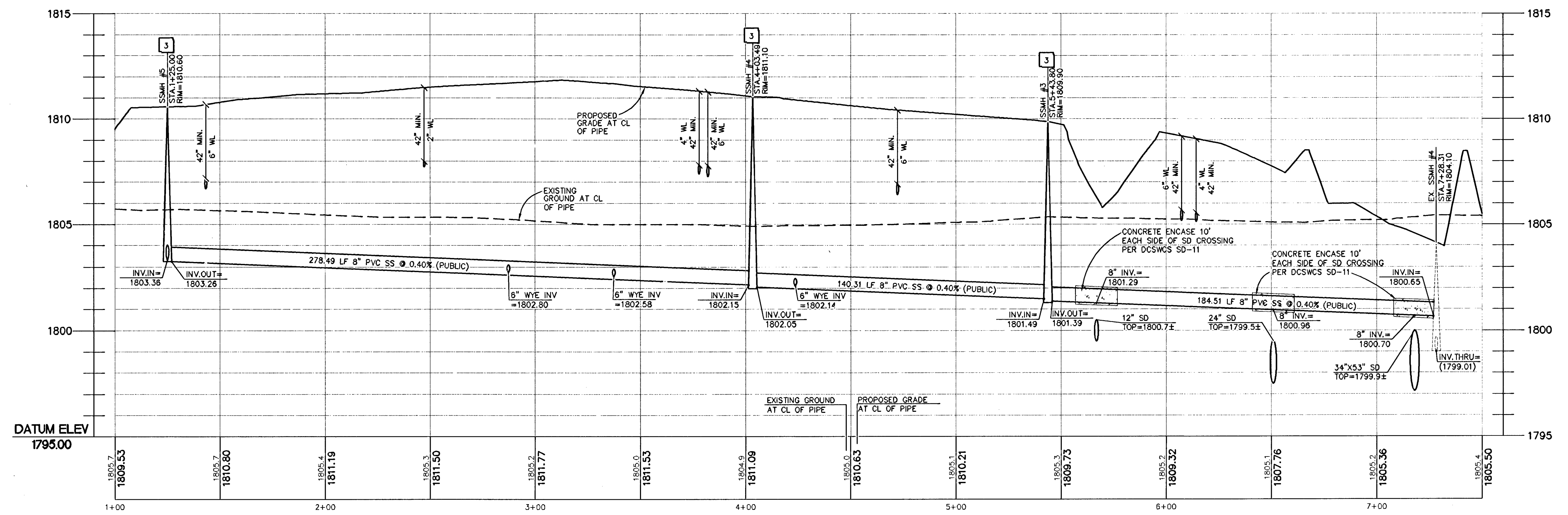
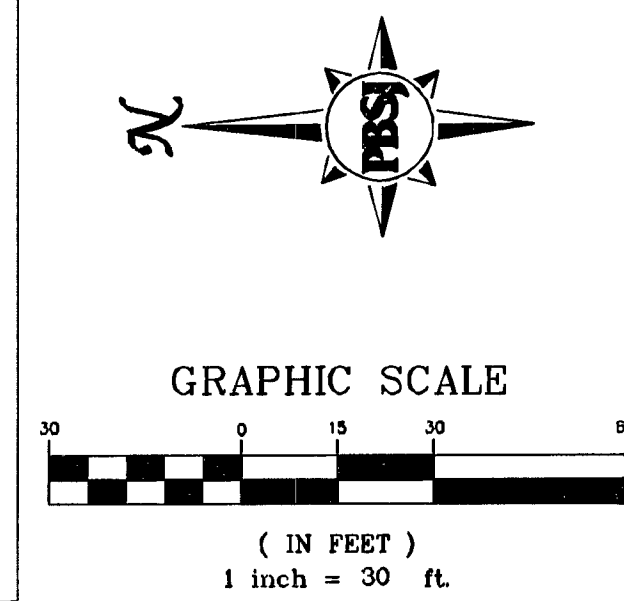
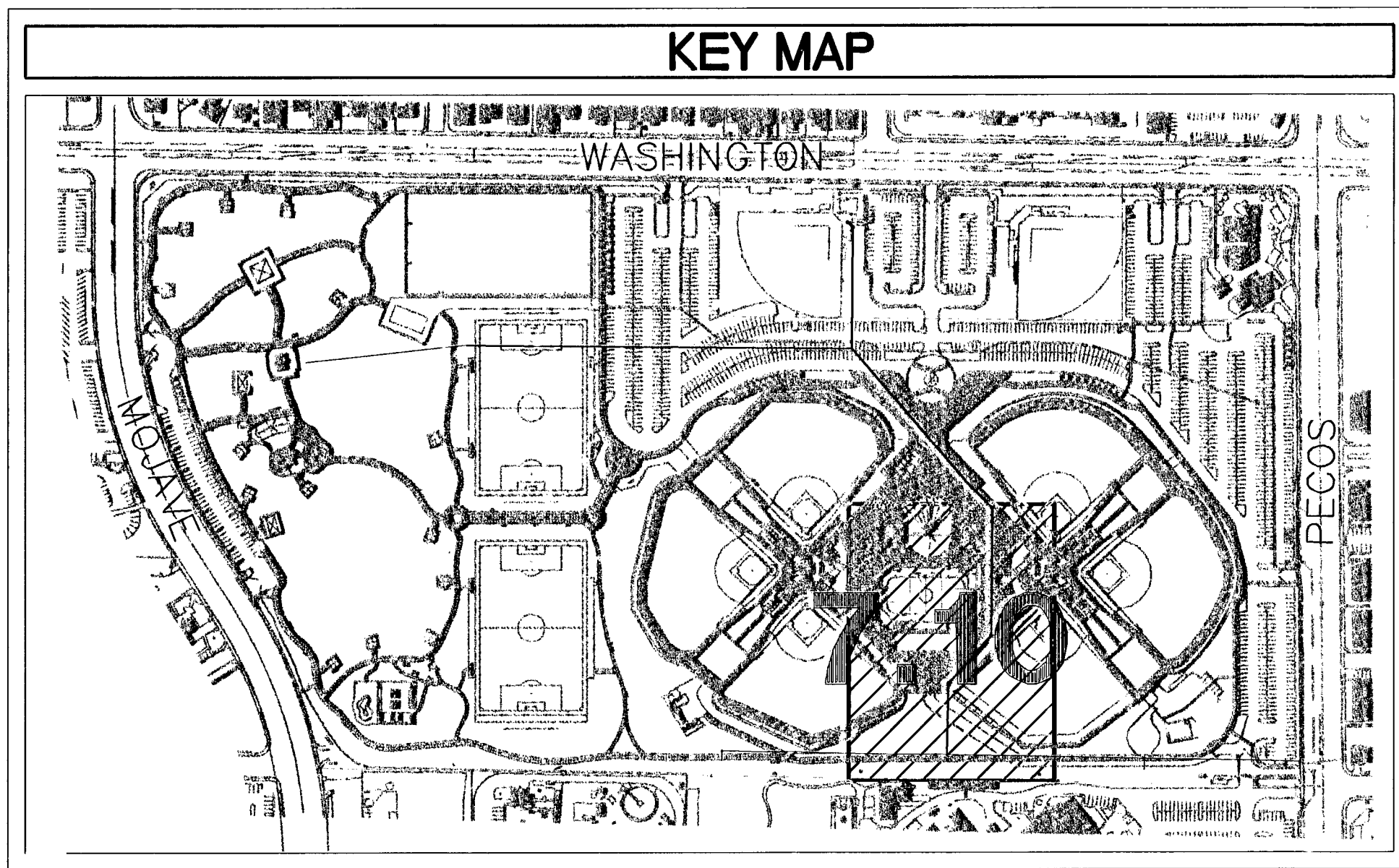


SANITARY SEWER 5 - PLAN VIEW
HORIZONTAL SCALE: 1" = 30'



SANITARY SEWER 5 - PROFILE VIEW
HORIZONTAL SCALE: 1" = 30'
VERTICAL SCALE: 1" = 3'

- SEWER NOTES**
- 1 INSTALL 8" PVC SANITARY SEWER
 - 2 CONSTRUCT SANITARY SEWER CLEANOUT PER DETAIL 15 ON SHEET C2.02
 - 3 CONSTRUCT SANITARY SEWER MANHOLE PER DETAIL ON SHEET C2.07



Call before you Underground
1-702-455-7511
1-702-455-7500
1-702-455-7500

Call before you Overhead
1-800-227-2800
1-702-227-2829
1-702-455-7511

BENCHMARK
CITY OF LAS VEGAS RIVET AND ROUND PLATE IN TOP OF CURB, SOUTHWEST CORNER OF WASHINGTON AND MOJAVE, 1205, 160E.
ELEVATION FEET=1819.41
BM 2LV01 25C4 ELEVATION METERS=554.56 NAVD88

BASIS OF BEARING
THE BASIS OF BEARINGS FOR THIS PROJECT IS GRID NORTH AS DEFINED BY THE NEVADA COORDINATE SYSTEM OF 1983 (NCS83), EAST ZONE, (2701), DETERMINED BY GIS CONTROL POINTS, "CC-GIS 808" AND "CC-GIS 808" AS SHOWN ON THE MAP THEREOF IN FILE 88 OF SURVEYS, PAGE 53, OFFICIAL RECORDS, CLARK COUNTY, NEVADA.

REVISIONS

Dekker Perich Sabatini
architecture
interiors
planning
engineering

6860 Bermuda Road, Ste. 100
Las Vegas, Nevada 89119
702.438.1008
fax 438.1050
Info@dpsdesign.org

PBS&J
ENGINEERING PLANNING SURVEYING
CONSTRUCTION SERVICES

2270 Corporate Circle
Suite 100
Henderson, Nevada 89074
Telephone: 702/263-7275
Fax: 702/263-7200

CITY OF LAS VEGAS
FREEDOM PARK RENOVATION
850 NORTH MOJAVE, LAS VEGAS, NEVADA 89101
SANITARY SEWER PLAN AND PROFILE FIVE

STAMP

ENGINEER - S
LAS VEGAS, NEVADA
LEO R. PERICH
Exp. 12/31/09
CIVIL
No. 015875

12-1-08
OWNER: CITY OF LAS VEGAS
DEPARTMENT OF PUBLIC WORKS
ARCHITECTURAL SERVICES

400 EAST STEWART AVENUE
LAS VEGAS, NEVADA 89101
PHONE: (702) 229-5538
FAX: (702) 384-4846
TELE: (702) 386-9108

DRAWN	
FILE	3008-C7.10P
DATE	DECEMBER 1, 2008
SCALE	1" = 30'
BID NO	070354
CLV DWG NO	650.22-18
SHEET NO	H30306 SHEET 72 OF 78

C7.10

DRAWINGS AND INSTRUMENTS OF SERVICE ARE THE PROPERTY OF THE DESIGN PROFESSIONAL, WHOSE STAMP OF CERTIFICATION APPEARS ON THE DRAWING. ANY REPRODUCTION OR USE OF REPRODUCTION IN WHOLE OR IN PART WITHOUT WRITTEN CONSENT OF THE DESIGN PROFESSIONAL IS STRICTLY PROHIBITED. THE CLIENT MAY BE UTILIZED ONLY FOR OCCUPANCY OF THE PROJECT FOR WHICH THEY WERE PREPARED AND NOT FOR THE CONSTRUCTION OF ANY OTHER PROJECT. P.A.C. 622.760