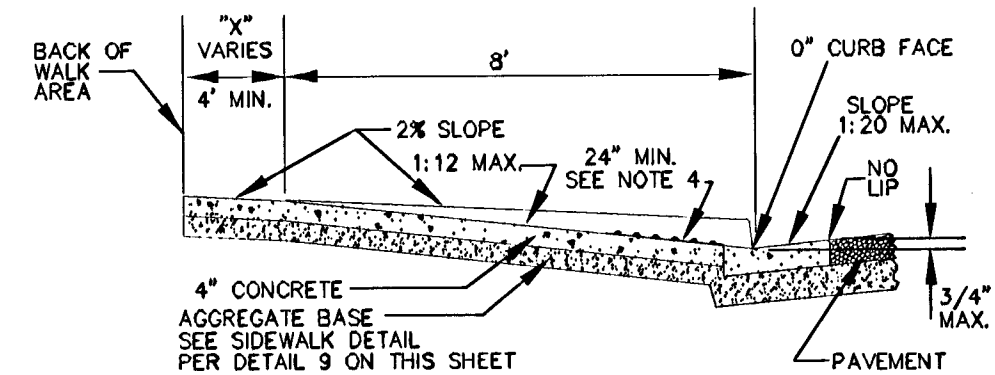
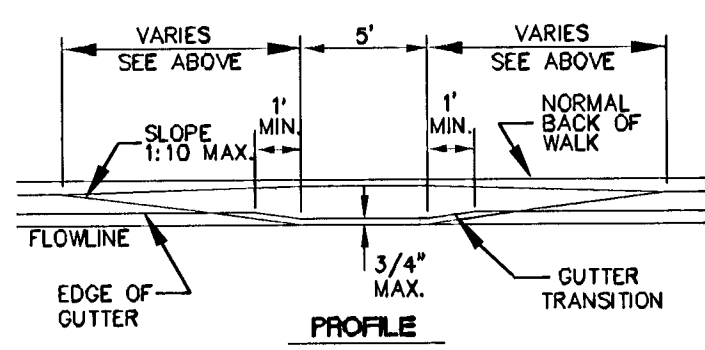


RAMP IN CURB RETURN
(NO BACK OF WALK DEPRESSION)



SECTION C-C



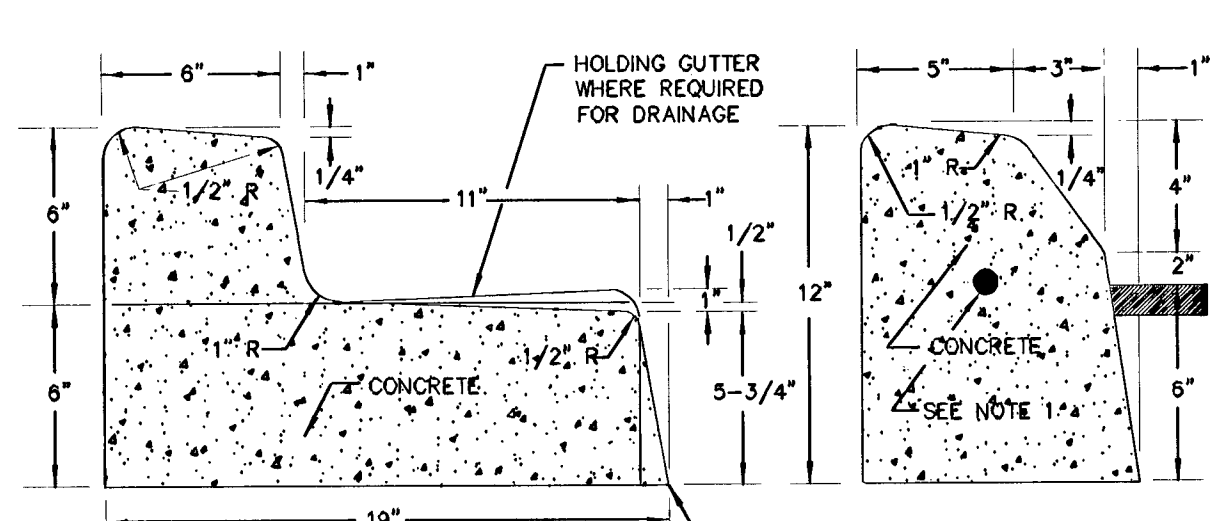
PROFILE

NOTES:

1. SIDEWALK RAMP WITHIN CURB RETURN SHALL BE LOCATED AT THE MIDPOINT OF CURB RETURN UNLESS OTHERWISE APPROVED.
2. RAMP SHALL BE CONSTRUCTED WITH A ROUGH BROOM FINISH TRANSVERSE TO THE SLOPE OF THE RAMP.
3. WHEN CONSTRUCTING RAMP WHERE CURB & GUTTER EXISTS, COMPLETELY REMOVE INTERFERING PORTIONS OF EXISTING CURB & GUTTER.
4. DETECTABLE WARNING CONSISTING OF RAISED TRUNCATED DOMES WHICH COMPLY WITH DETAILS ON SHEET 4 OF THIS DRAWING NO. AND CONTRASTING VISUALLY WITH ADJOINING SURFACES SHALL BE PLACED ON BOTTOM PORTION OF RAMP EXTENDING THE FULL WIDTH OF THE RAMP AND TO A MINIMUM DEPTH OF 24 INCHES PAVER BLOCKS PERMITTED ONLY IN THE CITY OF BOULDER CITY FOR DETECTABLE WARNING AREAS.

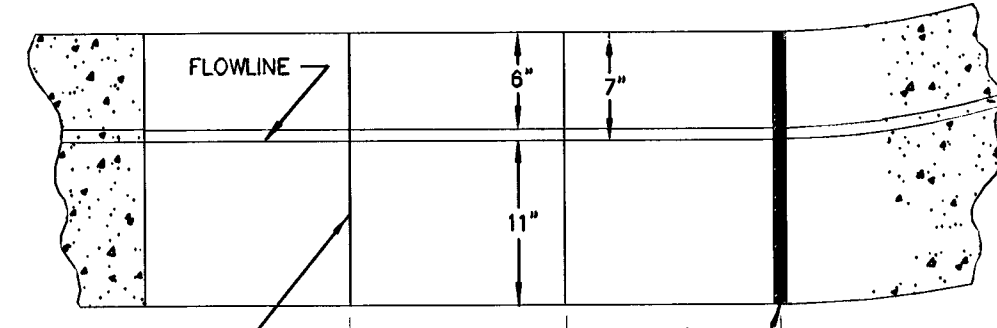
CASE II SHALL BE USED WHERE R/W AND FIELD CONDITIONS PERMIT.

7 SIDEWALK RAMP CASE II
C2.02 CLARK COUNTY AREA UNIFORM STANDARD DRAWING No. 235 (2 OF 4)
N.T.S.



'L' CURB SECTION

'A' CURB SECTION

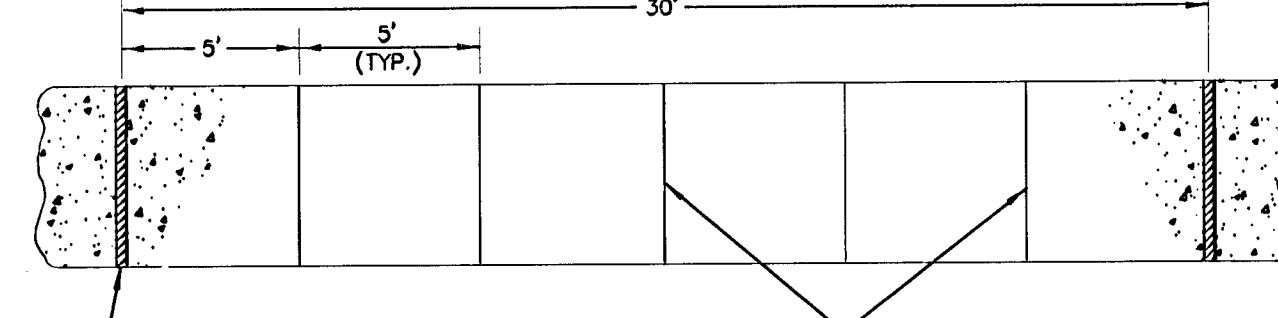


TYPICAL PLAN

NOTES:

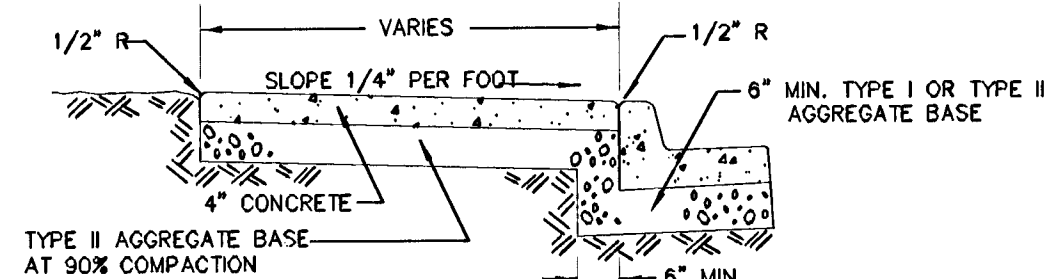
1. CONTINUOUS NO. 4 BAR REQUIRED IN NOSE OF MEDIAN ONLY.
2. 1" BATTER ON GUTTER FACE OPTIONAL.

8 'A' AND 'L' TYPE ISLAND CURB
C2.02 CLARK COUNTY AREA UNIFORM STANDARD DRAWING No. 219
N.T.S.

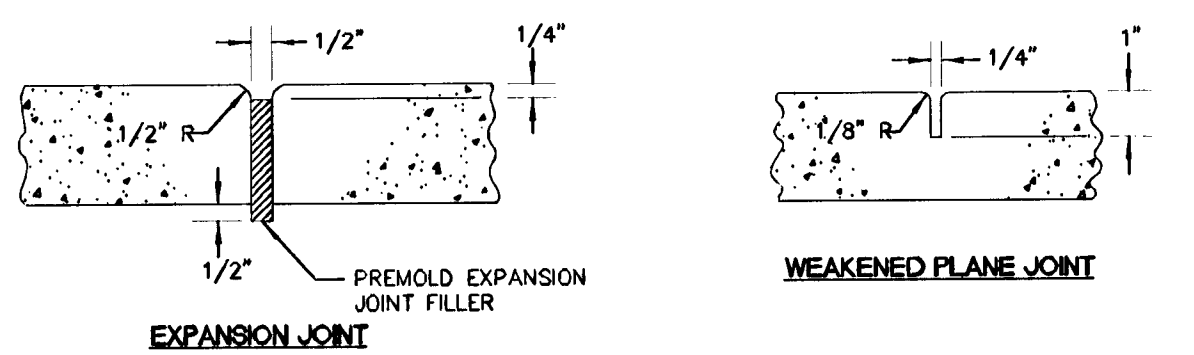


PLAN

1/2" EXPANSION JOINT AT 30' INTERVALS, AT COLD JOINTS AND AT BEGINNING AND END OF RETURN. EXPANSION JOINTS TO MATCH LOCATION MATCH LOCATION OF CURB AND GUTTER EXPANSION JOINT.



TYPICAL SECTION



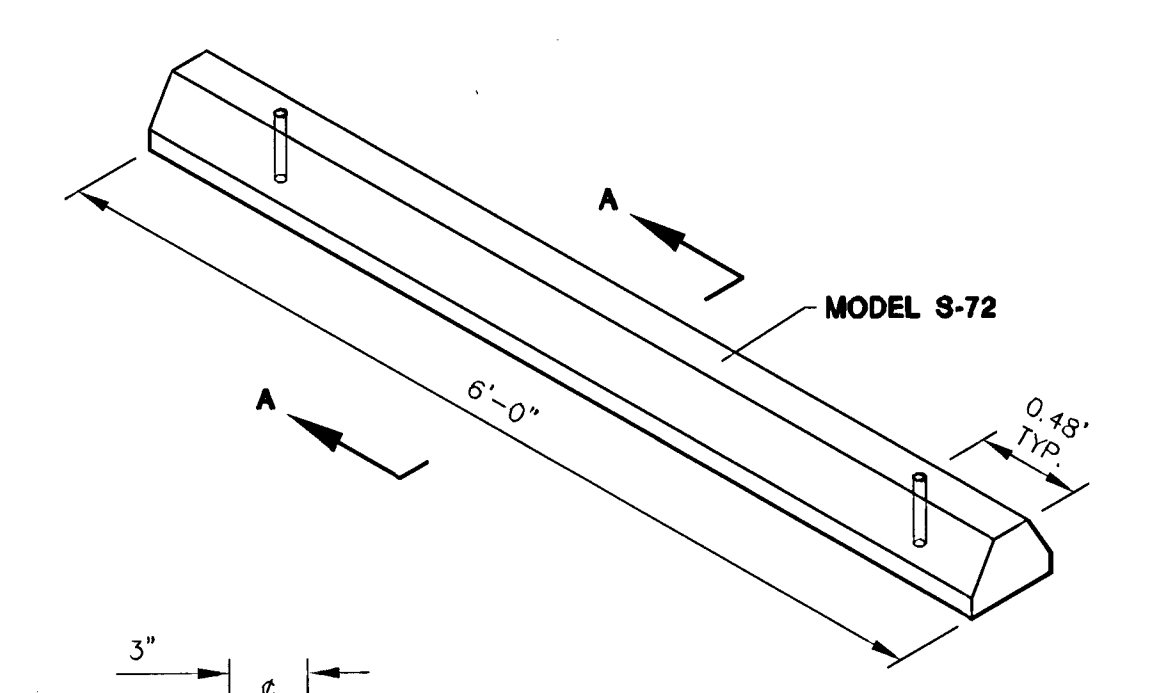
EXPANSION JOINT

NOTES:

1. ON ALL CURB RETURNS A 1/2" EXPANSION JOINT SHALL BE CONSTRUCTED BETWEEN THE BACK OF CURB AND THE SIDEWALK FOR THE ENTIRE LENGTH OF THE RETURN.
2. FOR OFF-SITE PUBLIC IMPROVEMENTS, THE TYPE II AGGREGATE BASE THICKNESS IS SHOWN ON THE TYPICAL SECTION DRAWINGS 202 - 207. ALL ON-SITE, PRIVATE, SIDEWALK SHALL HAVE 6" THICK TYPE II AGGREGATE BASE.
3. LONGITUDINAL WEAKENED PLANE JOINT REQUIRED AT MIDPOINT OF SIDEWALK 10' OR WIDER.

9 SIDEWALK
C2.02 CLARK COUNTY AREA UNIFORM STANDARD DRAWING No. 234
N.T.S.

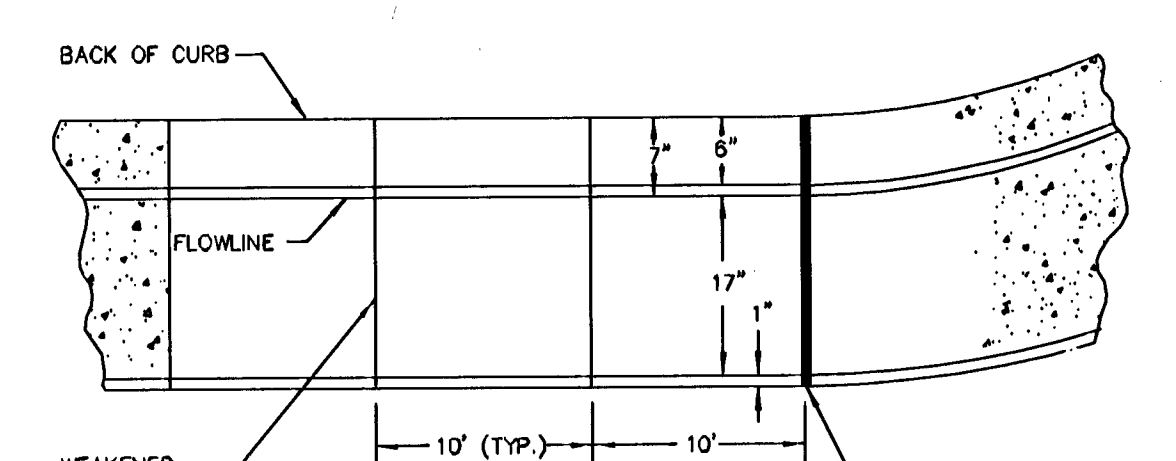
11/9/00
Standard_Parking_Curb.dwg
© 2000 Jensen Precast



FOR COMPLETE DESIGN AND PRODUCT INFORMATION, CONTACT JENSEN PRECAST.

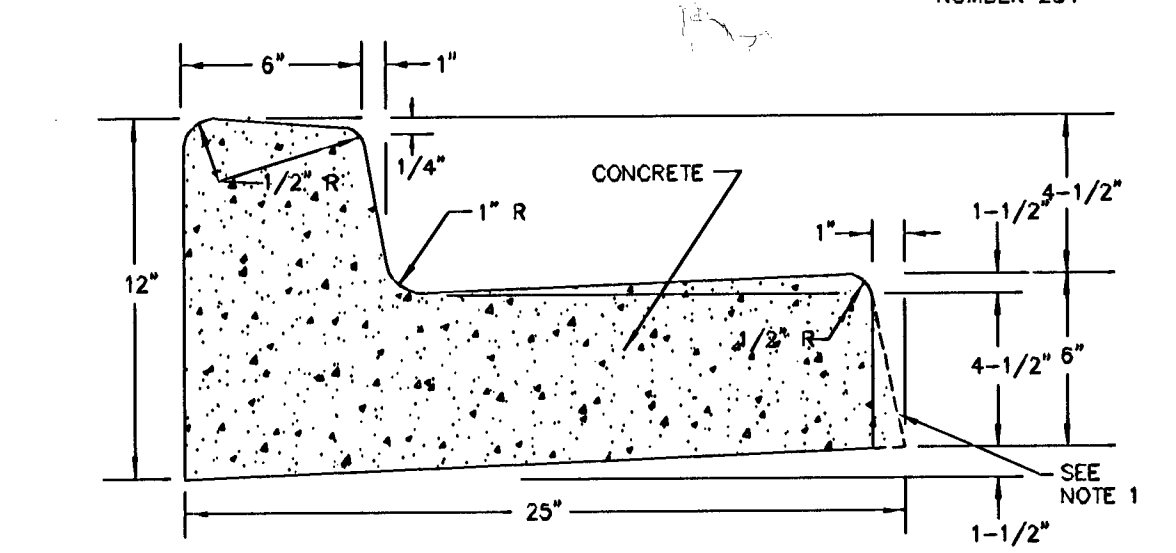
MODEL	LENGTH	WEIGHT	WT. PER PALLET	NO. PER PALLET
9-72	6'-0"	186 LBS.	3900 LBS.	24

10 PRECAST BUMPER BLOCK
C2.02 N.T.S.



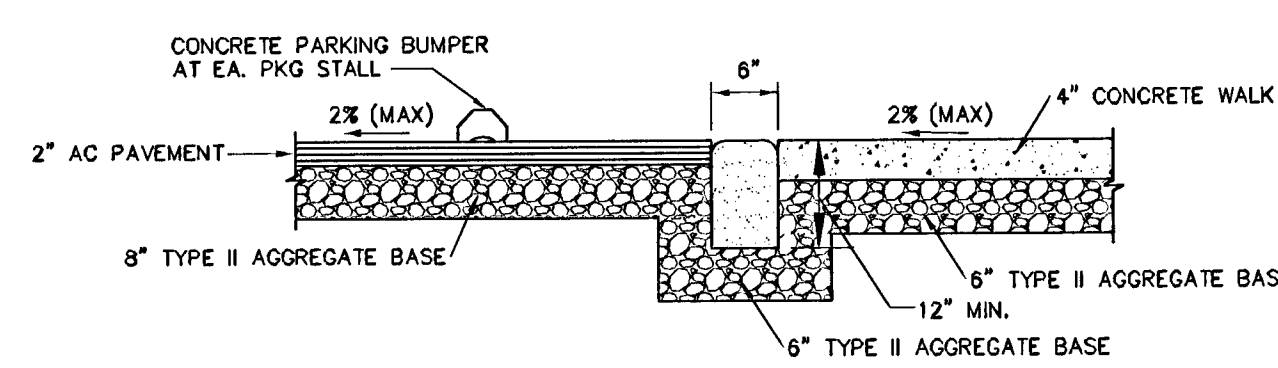
PLAN

1/2" EXPANSION JOINT AT ALL COLD JOINTS, AT BEGINNING AND END OF RETURN AND AT 300' MAX. INTERVALS FOR EXTRUDED CURB AND 30' MAX. INTERVALS FOR FORMED CURB. FOR JOINT DETAIL SEE STANDARD DRAWING NUMBER 234

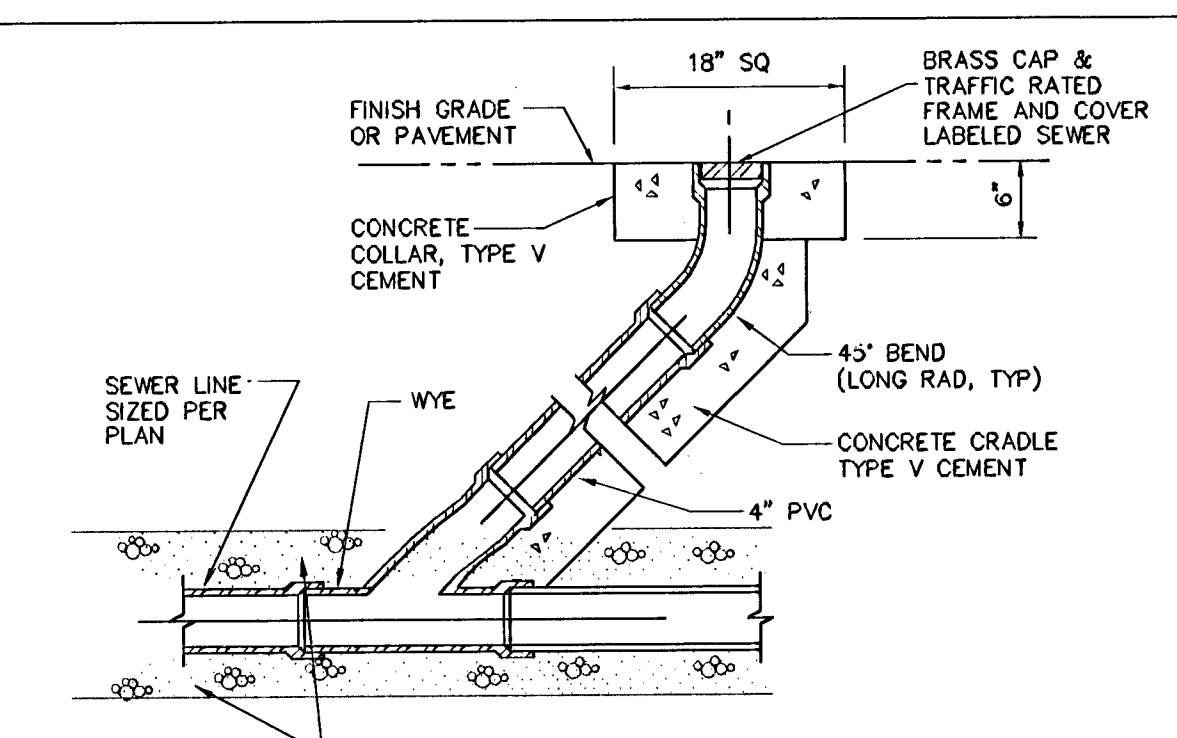


TYPICAL SECTION

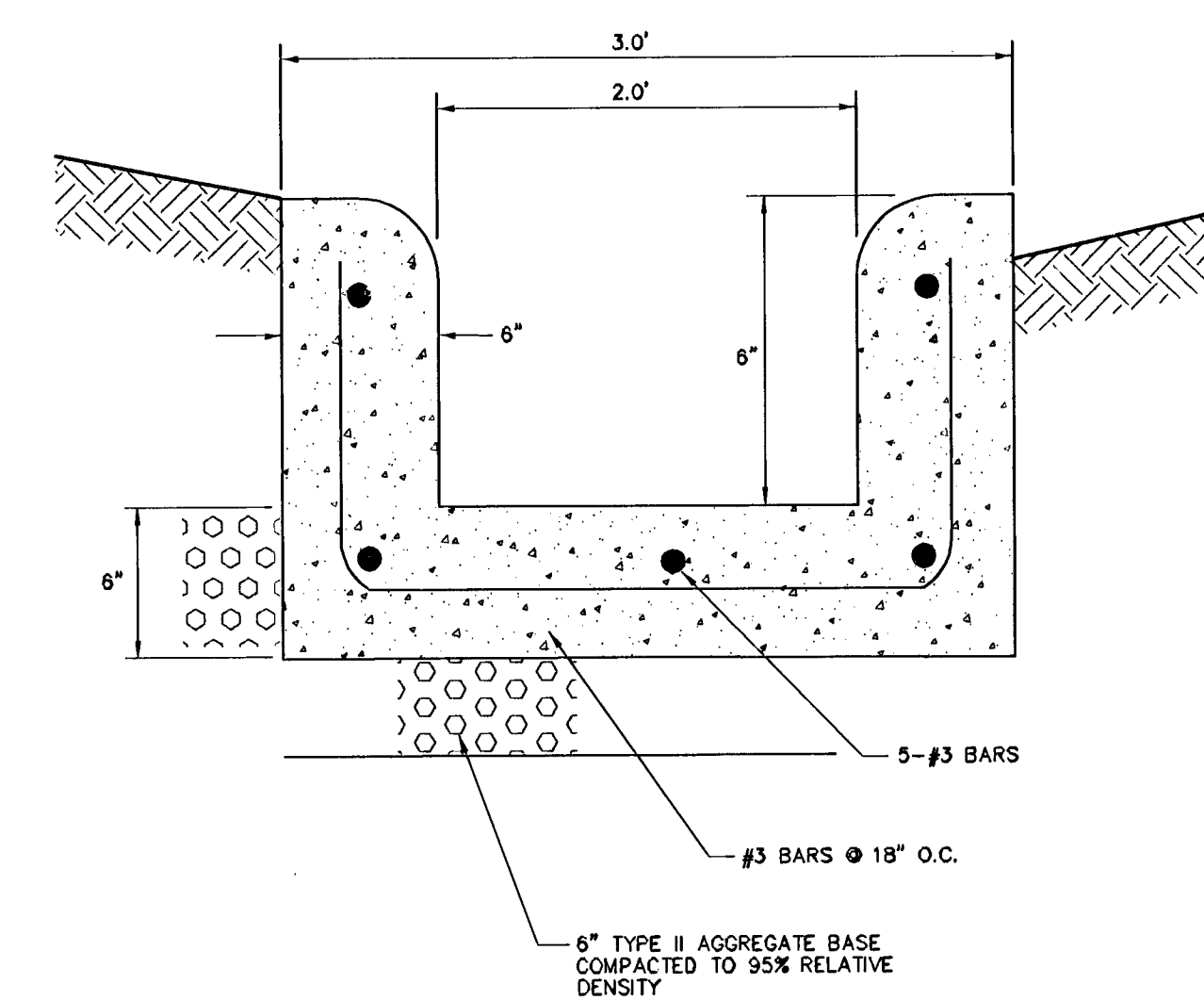
12 'L' TYPE CURB AND GUTTER
C2.02 CLARK COUNTY AREA UNIFORM STANDARD DRAWING No. 210
N.T.S.



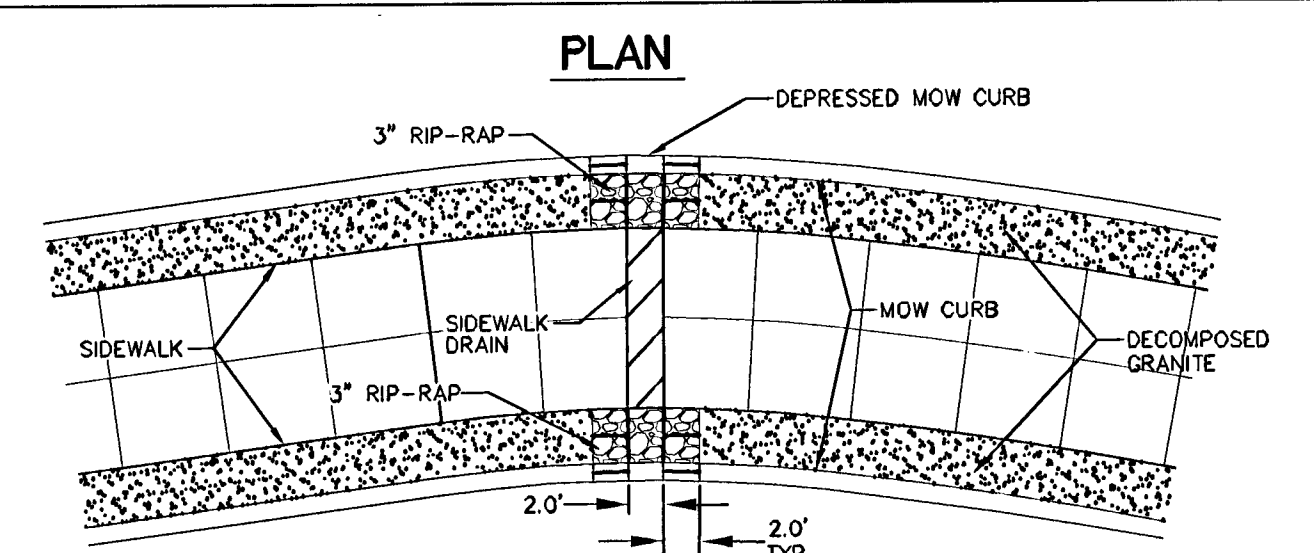
13 10" FACE CURB DETAIL
C2.02 N.T.S.



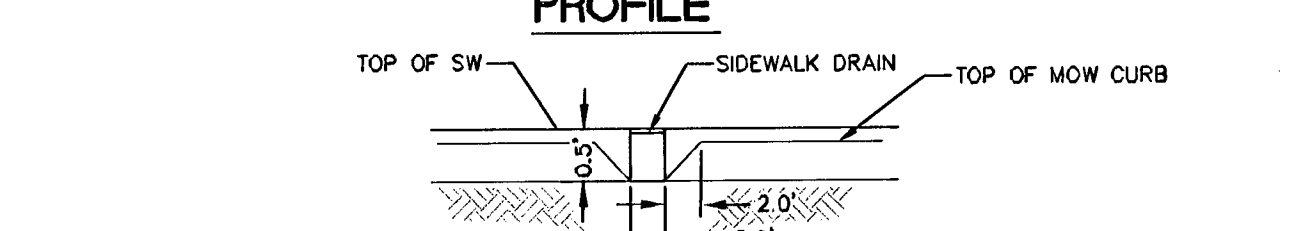
15 SEWER CLEANOUT DETAIL
C2.02 N.T.S.



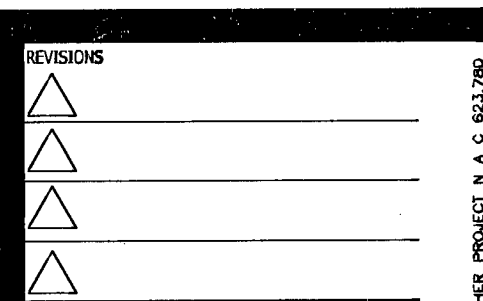
14 3' CONCRETE FLUME
C2.02 NOTE: BASE MATERIAL/THICKNESS TO BE CONFIRMED BY THE SOILS ENGINEER
N.T.S.



PROFILE



15A UNDERSIDEWALK DRAIN SECTION
C2.02 N.T.S.



architecture
interiors
planning
engineering

Dekker Perich Sabatini

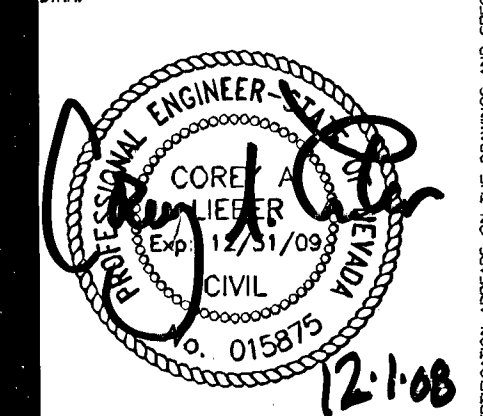
6860 Bermuda Road, Ste. 100
Las Vegas, Nevada 89119
702.438.1008
fax: 438.1050
info@dpsdesign.org

PBS&J

ENGINEERING PLANNING SURVEYING
CONSTRUCTION SERVICES

2270 Corporate Circle
Suite 100
Henderson, Nevada 89074
Telephone: 702/253-7225
Fax: 702/263-7200

**CITY OF LAS VEGAS
FREEDOM PARK RENOVATION
850 NORTH MOJAVE, LAS VEGAS, NEVADA 89101
GENERAL NOTES**



OWNER: CITY OF LAS VEGAS
DEPARTMENT OF PUBLIC WORKS
ARCHITECTURAL SERVICES

FILE	3008-C2.02d
DATE	DECEMBER 1, 2008
SCALE	N.T.S.
BID NO	070354
CLIENT NO	650.22-18
	1130306
SHEET NO	SHEET 4 OF 78

C2.02

Call before you dig
Underground
1-702-455-7511
CLARK COUNTY PUBLIC WORKS
1-702-455-5000
SAFETY SERVICES DEPARTMENT
1-702-455-7544

Call before you dig
Overhead
1-702-227-2929
NEVADA STATE DEPARTMENT OF
SAFETY SERVICES DEPARTMENT
1-702-455-7544

650.22-18

118108