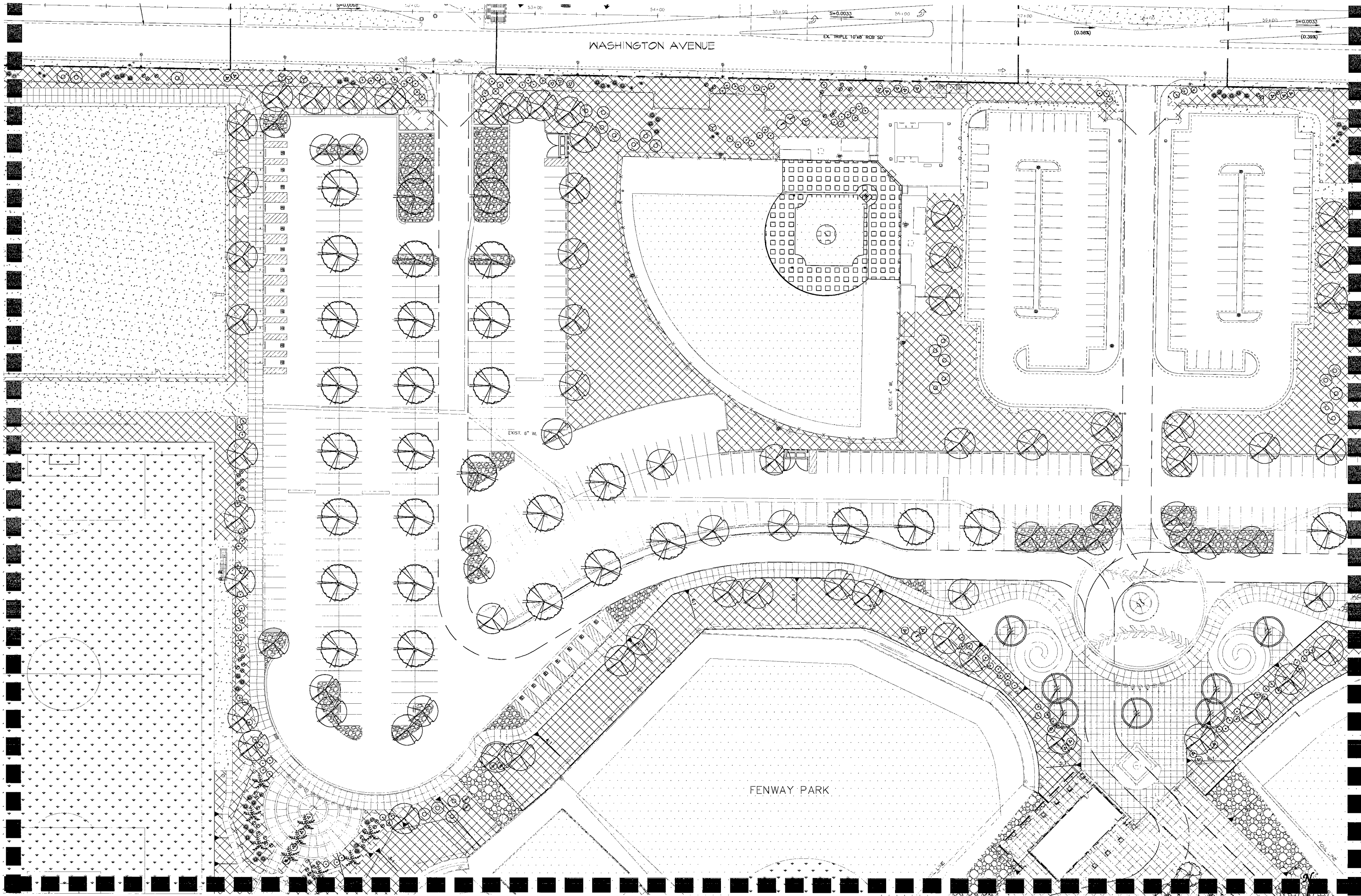


MATCHLINE -- REFER TO SHEET LP-10

MATCHLINE -- REFER TO SHEET LP-11



MATCHLINE -- REFER TO SHEET LP-1e

PLANT SCHEDULE

SYMBOL	BOTANICAL NAME
TREES	
(Symbol)	ACACIA STENOPHYLLA
(Symbol)	CHILOPSIS LINEARIS
(Symbol)	CHITALPA TASHKENTENSIS
(Symbol)	FRAXINUS VELUTINA 'RIO GRANDE'
(Symbol)	PARKINSONIA 'DESERT MUSEUM'
(Symbol)	PISTACIA X 'RED PUSH'

PLANT SCHEDULE

SYMBOL	BOTANICAL NAME
EXISTING TREES	
(Symbol)	ASH SPECIES
(Symbol)	COTTONWOOD SPECIES
(Symbol)	ELM SPECIES
(Symbol)	MESQUITE SPECIES
(Symbol)	MULBERRY SPECIES
(Symbol)	OAK SPECIES
(Symbol)	OLIVE SPECIES
(Symbol)	PALM SPECIES
(Symbol)	PINE SPECIES
(Symbol)	PISTACHE SPECIES

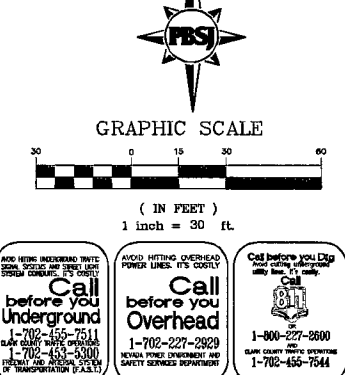
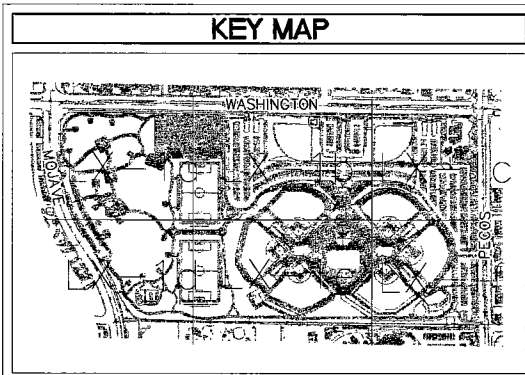
PLANT SCHEDULE

SYMBOL	BOTANICAL NAME
EXISTING TREES	
(Symbol)	WASHINGTONIA ROBUSTA
SHRUBS	
(Symbol)	CAESALPINIA PULCHERRIMA
(Symbol)	DASYLIRION WHEELERII
(Symbol)	EREMOPHILA X 'SUMMERTIME BLUE'
(Symbol)	HESPERALOE PARVIFLORA
(Symbol)	LEUCOPHYLLUM FRUTESCENS 'GREEN CLOUD'
(Symbol)	MUHLENBERGIA RIGENS
(Symbol)	RHUS OVATA
(Symbol)	SALVIA GREGGII 'SIERRA LINDA'
(Symbol)	SENNA ARTEMISIOIDES
(Symbol)	TECOMA X 'SUNRISE'

PLANT SCHEDULE

SYMBOL	BOTANICAL NAME
GROUNDCOVERS	
(Symbol)	ACACIA REDOLENS 'DESERT CARPET'
(Symbol)	DALIA GREGGII
(Symbol)	MYOPORUM PARVIFOLIUM
VINES	
(Symbol)	MACFADYENA UNGUIS-CATI

- NOTES:**
- REFER TO SHEET LP-0 FOR PLANTING NOTES.
 - REFER TO SHEET LP-0 FOR DETAILED PLANT SCHEDULE.
 - REFER TO SHEET LG-2a FOR PLANTING DETAILS.
 - REFER TO SPECIFICATIONS PROVIDED UNDER SEPARATE COV FOR LANDSCAPE AND IRRIGATION SPECIFICATIONS.



123081

REVISIONS

10.20.2008	BLDG. DEPT. REVIEW #1
10.20.2008	OWNER CHANGES
11.07.2008	BLDG. DEPT. REVIEW #2
12.15.2008	BLDG. DEPT. REVIEW #3
01.24.2009	BLDG. DEPT. REVIEW #4
03.13.2009	OWNER CHANGES
03.20.2009	CAD WALL CHANGES
05.09.2009	CONTRACTOR CHANGES
08.26.2009	CONTRACTOR CHANGES
12.18.2009	CONTRACTOR CHANGES
01.31.2010	RECORD DRAWINGS

architecture
interiors
planning
engineering

Dekker Perich Sabatini
6800 Bermuda Road, Ste. 100
Las Vegas, Nevada 89119
702.436.1006
fax 436.1050
info@dpsdesign.org

PBSJ
INCREASING PLANNING QUALITY
CONSTRUCTION SERVICES

2270 Corporate Circle
Suite 100
Henderson, Nevada 89074
Telephone: 702/263-7275
Fax: 702/263-7200

CITY OF LAS VEGAS
FREEDOM PARK RENOVATION
850 NORTH MOAVE, LAS VEGAS, NEVADA 89101
PLANTING PLAN

Russ Mauger
Russ Mauger
Roche Constructors, Inc.

RECORD DRAWINGS
01-31-2010

OWNER: CITY OF LAS VEGAS
DEPARTMENT OF PUBLIC WORKS
ARCHITECTURAL SERVICES

400 EAST STEWART AVENUE
LAS VEGAS, NEVADA 89103
PHONE: (702) 229-6255
FAX: (702) 388-4866
TDD: (702) 388-9708

DATE: FEBRUARY 13, 2009
SCALE: AS NOTED
JOB NO: 070354
SHEET NO: 650-22-18

LP-1b

RECORD DRAWING