

10.20.2008	BIDG. DEPT. REVIEW #1
10.20.2008	OWNER CHANGES
11.07.2008	BIDG. DEPT. REVIEW #2
12.15.2008	BIDG. DEPT. REVIEW #3
01.24.2009	BIDG. DEPT. REVIEW #4
03.13.2009	OWNER CHANGES
03.20.2009	CMU WALL CHANGES
05.06.2009	CONTRACTOR CHANGES
06.29.2009	CONTRACTOR CHANGES
08.22.2009	CONTRACTOR CHANGES
01.31.2010	REVISION DRAWINGS

architectural
interior
planning
engineering

Dekker Perich Sabatini

6860 Bermuda Road, Ste 100
Las Vegas, Nevada 89119
702.436.1006
fax 438.1050
info@psdesign.org

PBSJ

ENGINEERING PLANNING SURVEYING
CONSTRUCTION SERVICES

2270 Corporate Circle
Suite 100
Henderson, Nevada 89074
Telephone: 702.263-7275
Fax: 702.263-7200

MATCHLINE SEE SHEET C6.02

CITY OF LAS VEGAS
FREEDOM PARK RENOVATION
150 NORTH MOJAVE, LAS VEGAS, NEVADA 89101
UTILITY PLAN 1

Russ Mauger
Roche Constructors, Inc.

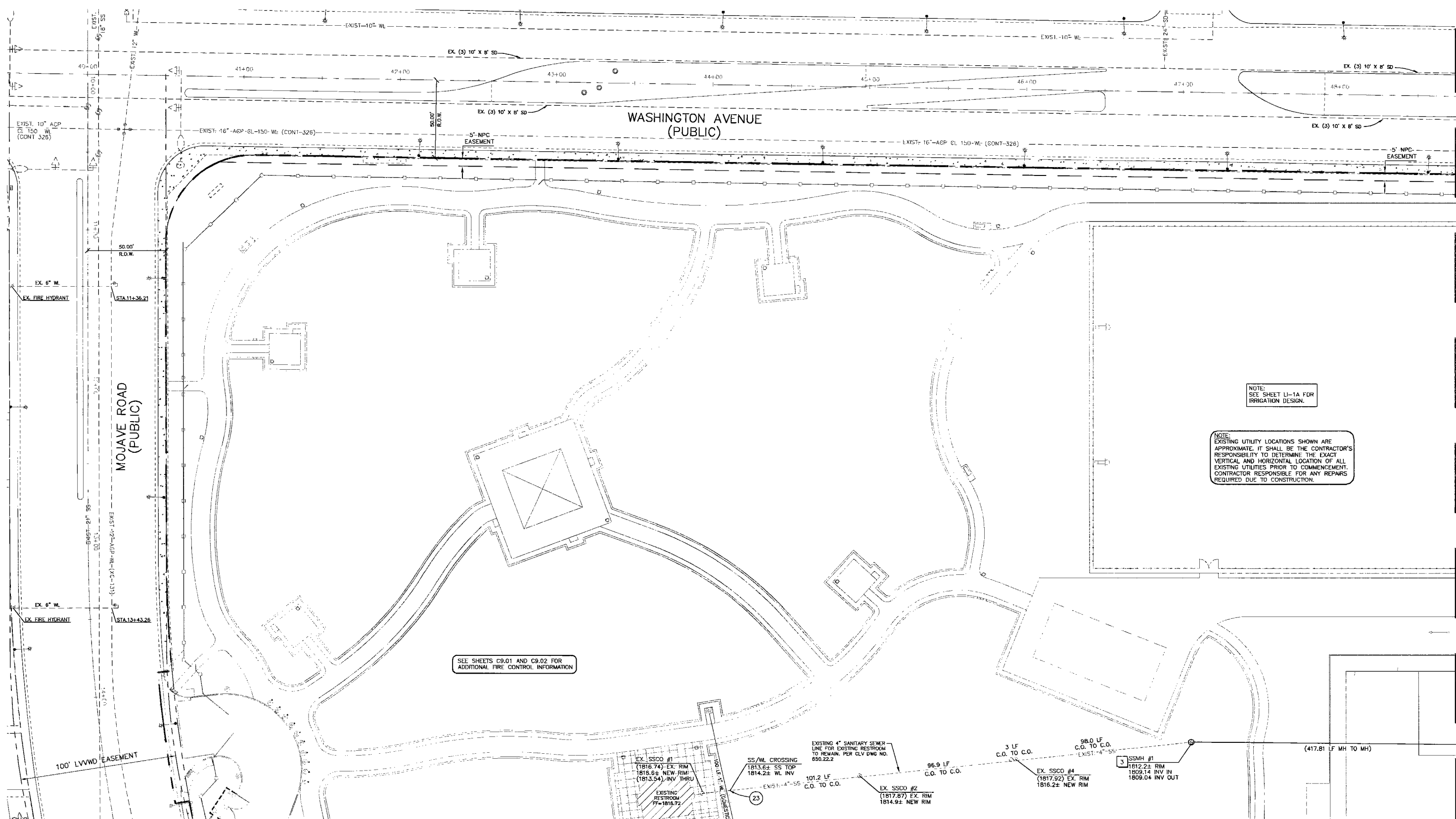
RECORD DRAWINGS
01-31-2010

OWNER: CITY OF LAS VEGAS
DEPARTMENT OF PUBLIC WORKS
ARCHITECTURAL SERVICES

400 EAST STEWART AVENUE
LAS VEGAS, NEVADA 89101
PHONE: (702) 228-4633
FAX: (702) 394-4444
TDD: (702) 394-4444

PROJECT: 300B-C6.01U
DATE: FEBRUARY 13, 2009
SCALE: 1" = 30'
SHEET NO: 070354
DRAWING NO: 650-22-18

C6.01



SEWER NOTES

- 1 INSTALL 6" PVC SANITARY SEWER
- 2 CONSTRUCT SANITARY SEWER CLEANOUT PER DETAIL 15 ON SHEET C2.02
- 3 CONSTRUCT SANITARY SEWER MANHOLE PER DETAIL 4 ON SHEET C2.07

WATER NOTES

- 1 INSTALL PVC WATERLINE (DOMESTIC) PER UDACS PLATE No. 6B.
- 2 INSTALL PVC WATERLINE (FIRE) PER UDACS PLATE No. 6B.
- 3 INSTALL 5.0" BEND PER UDACS PLATE No. 5. SIZE TO MATCH PIPE UNLESS OTHERWISE NOTED.
- 4 INSTALL 11.25" BEND PER UDACS PLATE No. 5. SIZE TO MATCH PIPE UNLESS OTHERWISE NOTED.
- 5 INSTALL 22.5" BEND PER UDACS PLATE No. 5. SIZE TO MATCH PIPE UNLESS OTHERWISE NOTED.
- 6 INSTALL 45" BEND PER UDACS PLATE No. 5. SIZE TO MATCH PIPE UNLESS OTHERWISE NOTED.
- 7 INSTALL 90" BEND PER UDACS PLATE No. 5. SIZE TO MATCH PIPE UNLESS OTHERWISE NOTED.
- 8 INSTALL TEE PER UDACS PLATE No. 5. SIZE TO MATCH PIPE UNLESS OTHERWISE NOTED.
- 9 INSTALL 2"x1" TEE PER UDACS PLATE No. 5
- 10 INSTALL 3"x1" TEE PER UDACS PLATE No. 5

- 11 INSTALL 4"x2" TEE PER UDACS PLATE No. 5
- 12 INSTALL 6"x3" TEE PER UDACS PLATE No. 5
- 13 INSTALL GATE VALVE AND VALVE BOX PER UDACS PLATE No. 8. SIZE TO MATCH PIPE UNLESS OTHERWISE NOTED.
- 14 INSTALL FIRE HYDRANT ASSEMBLY PER UDACS PLATE No. 7
- 15 INSTALL 8"x6" REDUCER
- 16 INSTALL 6"x2.5" REDUCER
- 17 INSTALL 2" DOMESTIC METER PER UDACS PLATE 1D
- 18 INSTALL 3" RPPA PER UDACS PLATE 11C
- 19 INSTALL 8" DCDA PER UDACS PLATE 11C
- 20 INSTALL FIRE DEPARTMENT CONNECTION (FDC) ON BUILDING WALL. REFER TO FIRE PROTECTION DRAWINGS FOR ADDITIONAL INFORMATION.
- 21 INSTALL POST INDICATING VALVE (PIV) ON FIRE SPRINKLER LATERAL. POST TO BE LOCATED 5'-FEET MINIMUM AWAY FROM BUILDINGS AND AWAY FROM WALKWAYS.
- 22 DESIGN BUILDER SHALL INSTALL DRAINAGE FOR SYNTHETIC TURF INFIELDS PER SYNTHETIC TURF MANUFACTURERS SPECIFIC RECOMMENDATIONS FOR THIS SITE PER THE GEOTECHNICAL REPORT PROVIDED BY THE DESIGN BUILDER. DESIGN BUILDER SHALL SUPPLY SHOP DRAWINGS FROM SYNTHETIC TURF MANUFACTURER SHOWING PROPOSED DRAINAGE FOR APPROVAL.
- 23 CONCRETE ENCASE WATERLINE 10' EACH SIDE OF SANITARY SEWER CROSSING PER UDACS 3D-11.

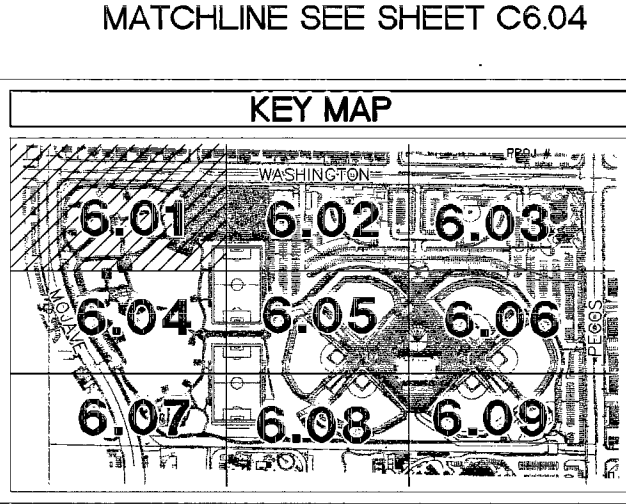
MULTI-PURPOSE BUILDING
100+ FIXTURE UNITS
OCCUPANCY = A-4

TYPE II-B SPRINKLERED
AREA = 29,894 SQ. FT.
REQ. FIRE FLOW PER IF2003 W/
SOM RED. = 1750 GPM
(USING 25,901 SQ. FT.)

APPROVED
CLV FIRE DEPARTMENT

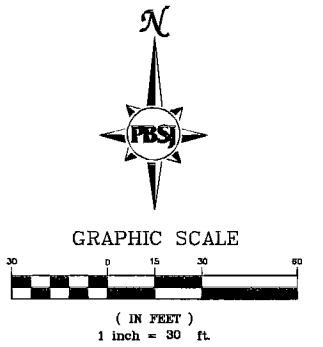
BY _____

APPROVAL OF THESE PLANS SHALL NOT BE CONSTRUED TO BE A PERMIT FOR OR AN APPROVAL OF ANY VIOLATION OR ANY OF THE PROVISIONS OF THE STATE OR COUNTY LAWS. FIRE FLOW 1750 GPM AT 20 P.S.I. RESIDUAL.



NOTE: PIPELINE MARKER BALLS IN TRENCH ABOVE EACH HORIZONTAL ELBOW FITTING, PER UDACS PLATE NO. 27

NOTE: DISPOSAL OF ASBESTOS CEMENT PIPE SHALL BE IN ACCORDANCE WITH LOCAL STATE AND FEDERAL REGULATIONS.



Call before you Dig
Call before you Overhead

1-800-4-A-DAVE
1-800-455-7544

APPROVED FOR CONSTRUCTION

LAS VEGAS VALLEY WATER DISTRICT
PROJECT # 115649

X:\Pro\ts\100003005\CADD\Wg\As-Built\C6.01U-49.dwg Mar 15, 2010 1:58pm

122993