

10.20.2009	BLDG DEPT. REVIEW #1
10.20.2009	OWNER CHANGES
11.07.2009	BLDG DEPT. REVIEW #2
12.15.2009	BLDG DEPT. REVIEW #3
01.14.2010	BLDG DEPT. REVIEW #4
03.11.2010	OWNER CHANGES
03.20.2010	CAL. WALL CHANGES
05.08.2010	CONTRACTOR CHANGES
06.24.2010	CONTRACTOR CHANGES
09.22.2010	CONTRACTOR CHANGES
01.31.2011	RECORD DRAWINGS

architect
interior
planning
engineering

Dekker Perich Sabatini

6880 Bermuda Road, Ste. 100
Las Vegas, Nevada 89119
702.436.1006
fax 436.1050
info@dpdesign.org

PBSJ

ENGINEERING PLANNING SURVEYING
CONSTRUCTION SERVICES

2270 Corporate Circle
Suite 300
Henderson, Nevada 89074
Telephone 702.763.7275
Fax: 702.763.7200

CITY OF LAS VEGAS
FREEDOM PARK RENOVATION
550 NORTH MOJAVE, LAS VEGAS, NEVADA 89101
GRADING PLAN 2

Russ Mauger
Russ Mauger
Roche Constructors, Inc.

RECORD DRAWINGS
01-31-2010

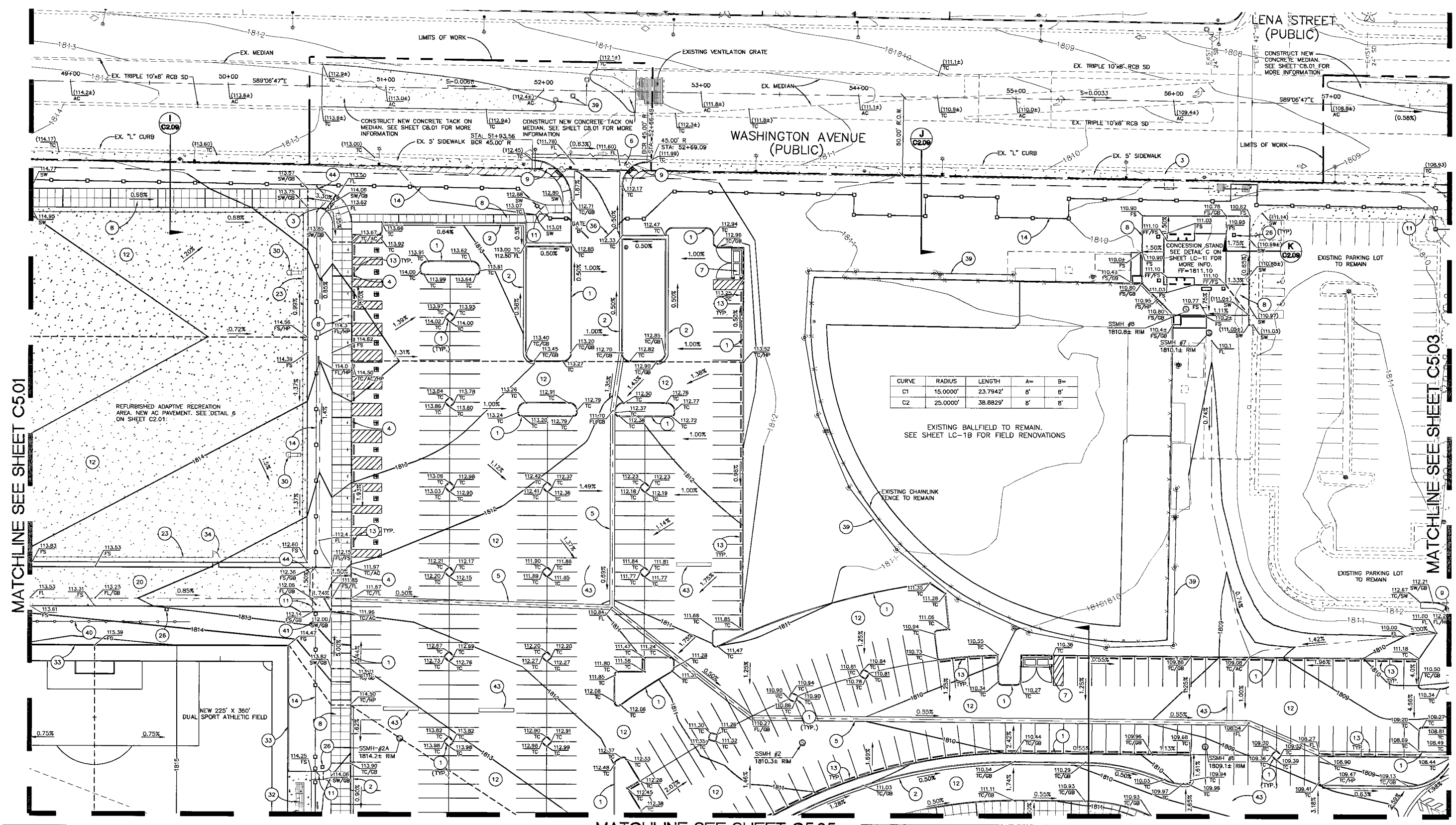
OWNER: CITY OF LAS VEGAS
DEPARTMENT OF PUBLIC WORKS
ARCHITECTURAL SERVICES

400 EAST STEWART AVENUE
LAS VEGAS, NEVADA 89101
PHONE: (702) 225-6235
FAX: (702) 225-6236
TDD: (702) 388-4846

DATE: 3006-C5.02g
DATE: FEBRUARY 13, 2009
SCALE: 1" = 30'
DRAWING NO: 070384
ELEVATION NO: 650.22-18

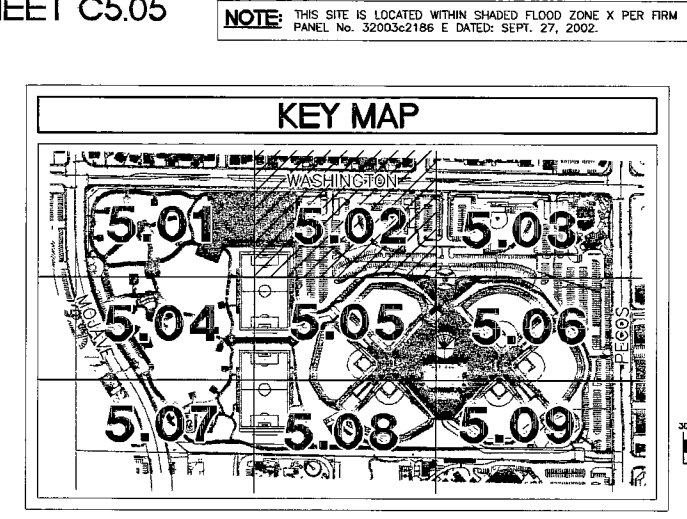
C5.02

SHEET 35 OF 78



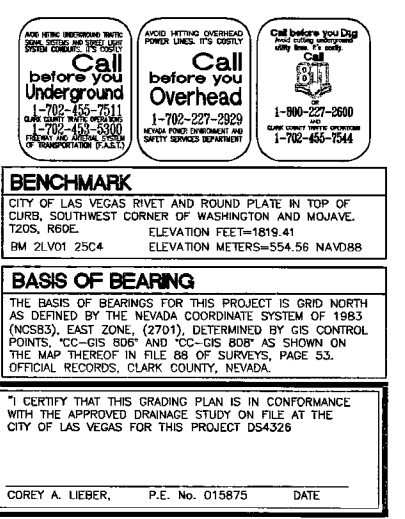
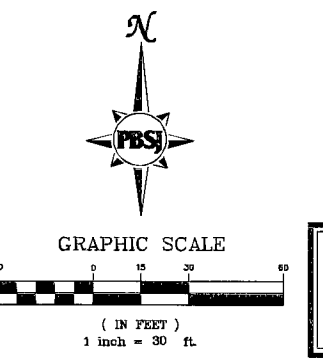
- CONSTRUCTION NOTES**
- CONSTRUCT TYPE "A" CURB PER DETAIL B ON SHEET C2.02.
 - CONSTRUCT "L" TYPE CURB AND GUTTER PER DETAIL 12 ON SHEET C2.02.
 - CONSTRUCT SIDEWALK DRAIN PER DETAIL 3 ON SHEET C2.01.
 - CONSTRUCT "O" FACE CURB PER DETAIL 13 ON SHEET C2.02.
 - CONSTRUCT 3" VALLEY GUTTER PER DETAIL 5 ON SHEET C2.01.
 - CONSTRUCT 8" CROSS GUTTER PER DETAIL 1 ON SHEET LC-1H.
 - TRASH ENCLOSURE. REFER TO DETAIL G ON SHEET LC-1H.
 - CONSTRUCT SIDEWALK PER DETAIL 9 ON SHEET C2.02.
 - CONSTRUCT SIDEWALK RAMP CASE 1 PER DETAIL 2 ON SHEET C2.01.
 - CONSTRUCT 3" CONCRETE FLUME PER DETAIL 14 ON SHEET C2.02.
 - PEDESTRIAN ENTRY GATE. REFER TO DETAIL F ON SHEET LC-3D.
 - CONSTRUCT ASPHALTIC CONCRETE PAVEMENT PER DETAIL 6 ON SHEET C2.01.
 - INSTALL PRECAST BUMPER BLOCK PER DETAIL 10 ON SHEET C2.02.
 - INSTALL DECORATIVE FENCE PER DETAIL G ON SHEET LC-3A.
 - CONSTRUCT 12" MOW CURB PER DETAIL P ON SHEET LC-3B.
 - DRINKING FOUNTAIN PER DETAIL C ON SHEET LC-3I.
 - INSTALL REMOVABLE BOLLARD PER DETAIL J ON SHEET LC-3A.
 - CONSTRUCT SIDEWALK DRAIN PER DETAIL 3 ON SHEET C2.01.
 - DETECTABLE WARNING TILES PER DETAIL BA ON SHEET C2.01.
 - DECOMPOSED GRANITE PER DETAIL A ON SHEET LC-3C.
 - CONSTRUCT 6" CONCRETE PAVEMENT SECTION PER DETAIL D ON SHEET LC-3B.
 - NEW 40' x 40' TYPE "A" SHADE STRUCTURE. REFER TO DETAIL ON SHEET LC-1H.
 - SIGNAGE: DROWNING RISK. SEE DETAIL 1 ON SHEET C5.07.
 - 6" HIGH CHAINLINK FENCE. REFER TO DETAIL F ON SHEET LC-3A.
 - CONCRETE BENCH ON 4"x11" CONC PAD. SEE DETAIL "T" ON SHEET LC-3A. REFER TO SPECIFICATIONS FOR CITY STANDARD.
 - SIGNAGE: WINTER IRRIGATION. SEE DETAIL C ON SHEET LC-3H FOR MORE INFO. REFER TO CITY STD 020862-24.
 - TRASH RECEPTACLE. REFER TO DETAIL I ON SHEET LC-3I.
 - CONSTRUCT ASPHALTIC CONCRETE PAVEMENT PER DETAIL 6 ON SHEET C2.01.
 - INSTALL PRECAST BUMPER BLOCK PER DETAIL 10 ON SHEET C2.02.
 - CONSTRUCT VEHICULAR ENTRY GATE PER DETAIL J ON SHEET LC-3A.
 - BASKETBALL STANDARD PER DETAIL N ON SHEET LC-3B.
 - 12" x 6" CHAINLINK VEHICULAR GATE PER DETAIL H ON SHEET LC-3A.
 - BLEACHERS. INSTALL PER MANUFACTURER SPECIFICATIONS.
 - CONSTRUCT SODDER FIELD 6" MOW CURB PER DETAIL H ON SHEET LC-3C.
 - 4"W x 6" CHAINLINK PEDESTRIAN GATE PER DETAIL G ON SHEET LC-3A.
 - SMALL GROUP PICNIC AREA PER DETAIL B ON SHEET LC-1H.
 - VEHICULAR ENTRY GATE PER DETAIL ON SHEET LC-1H.
 - INSTALL SAFETY NETTING.
 - ADJUST EXISTING MANHOLE RIMS TO NEW FINISHED GRADE AND INSTALL CONCRETE COLLARS.
 - PEDESTRIAN SAFETY NETTING. NET SERVICES TO PROVIDE SHOP DRAWINGS FOR APPROVAL PRIOR TO FABRICATION.
 - SIGNAGE: REPORT VANDALISM. SEE DETAIL C ON SHEET LC-3H.
 - TEAM BENCH. INSTALL PER MANUFACTURER'S SPECS.
 - CONSTRUCT SPEED BUMP PER DETAIL 15C ON SHEET C2.02.
 - CONSTRUCT VEHICULAR ENTRY GATE PER DETAIL J ON SHEET LC-3A.

- STORM DRAIN CONSTRUCTION NOTES**
- CONSTRUCT 48" TYPE I MANHOLE PER DETAIL ON SHEET C2.08.
 - CONSTRUCT 60" TYPE I MANHOLE PER DETAIL ON SHEET C2.08.
 - CONSTRUCT 60" TYPE II MANHOLE PER DETAIL ON SHEET C2.08. INSTALL CONCRETE COLLAR ON GRATED MANHOLES PER DETAIL 18 ON SHEET C2.03.
 - INSTALL 24" x 24" W AREA INLET DRAIN W/CONCRETE APRON PER DETAIL 17 & 18 ON SHEET C2.03.
 - INSTALL 36" x 36" W AREA INLET DRAIN W/CONCRETE APRON PER DETAIL 17 & 19 ON SHEET C2.03.
 - INSTALL 24"x36" DROP INLET PER DETAIL 20 ON SHEET C2.03.
 - INSTALL TRENCH DRAIN PER DETAIL 1 ON SHEET C2.03.
- NOTE: USE CLASS III RCP PIPE UNLESS OTHERWISE NOTED.
- NOTE: ADD 1700 TO ALL PLAN GRADE ELEVATIONS.



SOILS REPORT COMPLETED BY:
NINYO & MOORE
6700 PARADISE ROAD, SUITE E
LAS VEGAS, NEVADA 89119
PHONE: (702) 433-0330

FILE NO. 302116001
DATED: SEPTEMBER 18, 2008
UPDATED: SEPTEMBER 9, 2008



222980

X:\P05_As\100003006\CADD\DWG_Vs-Bulld\3006-C5.02g-36.dwg Mar 15, 2010 11:22am