

SEWER CONTRIBUTION

BATHHOUSE
 AVE DAILY FLOW = #FIXTURE UNITS • ERUS/FIXTURE • ERU FACTOR
 = 112.25 • 0.45 • 250 GPD = 12,628 GPD
 = 8.77 GPM = 0.012628 MGD
 PEAK DAILY FLOW = PEAK FACTOR • AVE DAILY FLOW
 = 3.4 • 12,628.13 GPD = 42,936 GPD
 = 29.82 GPM = 0.042936 MGD

EQUIPMENT BUILDING FROM POOL
 AVE DAILY FLOW = ERUS (248,255 GAL POOL) • ERU FACTOR
 = 0.85 • 250 = 213 GPD
 = 0.15 GPM = 0.000213 MGD
 PEAK DAILY FLOW = PEAK FACTOR • AVE DAILY FLOW
 = 3.4 • 212.50 GPD = 723 GPD
 = 0.50 GPM = 0.000723 MGD

TOTALS
 • AVE DAILY = 8.92 GPM = 12,841 GPD = 0.012841 MGD
 • PEAK DAILY = 30.37 GPM = 43,660 GPD = 0.043661 MGD

CLV FIRE FLOW CALCULATIONS

FIRE FLOW REQUIREMENT IS **1500** GALLONS PER MINUTE AT 20 PSI RESIDUAL PRESSURE
 BASED ON:
 SQUARE FOOTAGE **3500** SQUARE FEET
 LARGEST AREA BETWEEN 4-HOUR AREA SEPARATION WALLS **N/A** SQUARE FEET
 BUILDING HEIGHT **25** FEET
 NUMBER OF STORIES **1** FLOORS
 TYPE OF CONSTRUCTION **V-B**
 OCCUPANCY **A-3**
 FULL AUTOMATIC FIRE SPRINKLER SYSTEM YES NO
 REVIEWED BY: _____ DATE _____
 LAS VEGAS FIRE DEPT

APPROVED FOR CONSTRUCTION
 CITY OF LAS VEGAS FIRE DEPARTMENT DATE _____

APPROVED FOR CONSTRUCTION
 LAS VEGAS VALLEY WATER DISTRICT DATE _____
 (PROJECT # H109366)

FREEDOM PARK POOL AND BATHHOUSE
 WASHINGTON AVE. & PECOS RD.
 LAS VEGAS, NV.
 100% CONSTRUCTION DOCUMENTS
 UTILITY PLAN

ISSUE

2480 E. Tompkins Ave.
 Las Vegas, NV 89121
 phone: 702.456.4664
 fax: 702.456.4919

INTEGRITY ENGINEERING

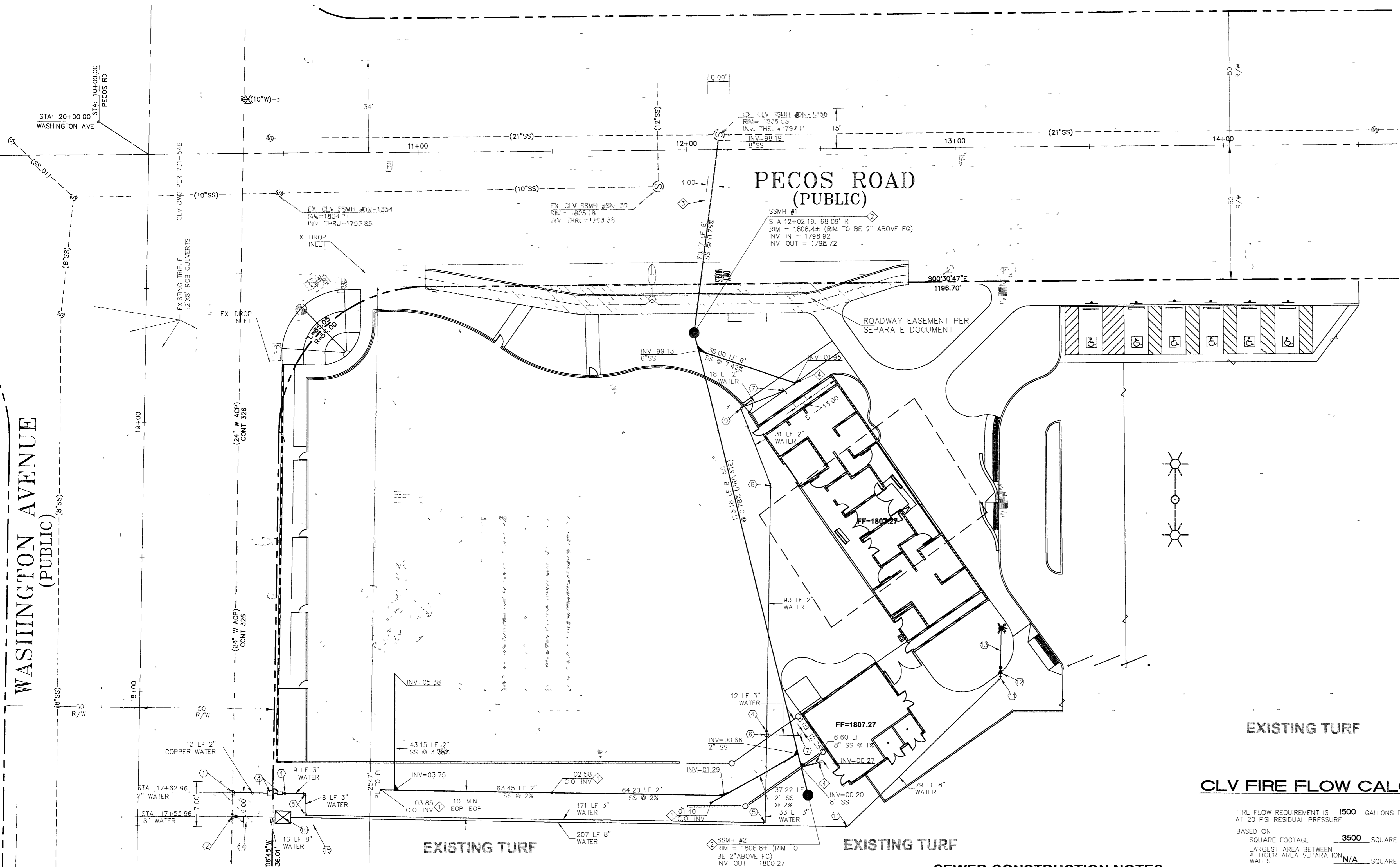
OWNER: CITY OF LAS VEGAS
 DEPARTMENT OF PUBLIC WORKS
 ARCHITECTURAL SERVICES

400 EAST STEWART AVENUE
 LAS VEGAS, NEVADA 89101
 PHONE: (702) 229-5535
 FAX: (702) 382-3232
 TDD: (702) 386-3108

DATE: **03-16-05**
 SCALE: **1"=20'**
 BID NO: **04.15341.06**
 CLV DWG NO: **650.22-17**

C4.01

CLV DWG NO



SEWER CONSTRUCTION NOTES

- ① INSTALL SANITARY SEWER CLEANOUT
- ② CONSTRUCT 48" MANHOLE PER CCSD STD DWG #SD-1 WITH 24" LOCKING MANHOLE COVER PER CCSD STD DWG #SD-3
- ③ TRENCH BACKFILL PER CCSD STD DWG # SD-16B
- ④ END STUB 5' FROM BUILDING - SEE PLUMBING PLANS FOR CONTINUATION

WATER CONSTRUCTION NOTES

- ① P.O.C. - CONNECT TO 24" WATER LINE WITH 2" SERVICE SADDLE AND CORP STOP PER UDACS PLATE #10
- ② P.O.C. - CONNECT TO EXISTING 24" WATER LINE WITH 8" M.J. WET TAPPING SLEEVE AND 8" TAPPING VALVE PER UDACS PLATE #22
- ③ INSTALL 2" METER WITH 2" RPPA PER UDACS PLATE NOS 1D AND 11A
- ④ INSTALL 3" X 2" REDUCER
- ⑤ INSTALL 3" 90° ELBOW
- ⑥ INSTALL 3" 90° TEE
- ⑦ END STUB 5' FROM BUILDING - SEE PLUMBING PLANS FOR CONTINUATION
- ⑧ INSTALL 2" 22 5' ELBOW
- ⑨ INSTALL 2" 90° ELBOW
- ⑩ INSTALL 8" FEBCO "N" PATTERN DCDA PER UDACS PL #11C
- ⑪ INSTALL 8" 45° ELBOW PER UDACS PLATE #5
- ⑫ INSTALL 8" X 6" REDUCER PER UDACS PLATE #3
- ⑬ INSTALL FIRE HYDRANT ASSEMBLY PER UDACS PLATE #7
- ⑭ TRENCH BACKFILL PER USD NO 504
- ⑮ 15' X 20' LVWD EASEMENT

DOUBLE CHECK DETECTOR ASSEMBLY (DCDA) (1) - 8"

THE DOUBLE CHECK DETECTOR ASSEMBLY SHALL BE INSTALLED IN ACCORDANCE WITH THE UDACS STANDARD PLATE NO 11C
 ANY BLOCK WALL OR OTHER FENCE MATERIAL SHALL BE DESIGNED AND CONSTRUCTED AROUND THE OUTSIDE OF THE EASEMENT(S) SO AS TO ALLOW THE DISTRICT DIRECT ACCESS FROM THE ADJACENT RIGHT-OF-WAY
 EASEMENTS SHALL BE CLEARLY MARKED OR STAKED PRIOR TO THE START OF CONSTRUCTION

REDUCED PRESSURE PRINCIPLE ASSEMBLY (1)-2"

APPROVED REDUCED PRESSURE PRINCIPLE ASSEMBLY(S) SHALL BE INSTALLED PER THE UDACS PLATE NO 11A. NO WATER SHALL BE TAKEN FROM A SERVICE REQUIRING BACKFLOW PREVENTION UNTIL THE REDUCED PRESSURE PRINCIPLE ASSEMBLY HAS BEEN SUCCESSFULLY TESTED BY THE LVWD

PIPE MATERIAL CONSTRUCTION LIST

UNLESS OTHERWISE NOTED ON THE PLANS, ALL PIPE MATERIALS USED SHALL BE AS FOLLOWS
WATER SYSTEM
 ALL PIPES GREATER THAN OR EQUAL TO 4" IN DIAMETER SHALL BE CONSTRUCTED USING C-900 PVC
 ALL PIPES LESS THAN 4" IN DIAMETER SHALL BE CONSTRUCTED USING SCH 40 PVC
SEWER SYSTEM
 ALL PIPES SHALL BE CONSTRUCTED USING SDR-35
STORM DRAIN SYSTEM
 ALL PIPES SHALL BE CONSTRUCTED USING MATERIALS AS NOTED ON PLANS

BENCHMARK

CLV BM 2LV02 30W4 R/VET & PLATE IN TOP OF CURB, SE CORNER OF WASHINGTON AVENUE AND PECOS ROAD CLEV 1805.04 (NAV088)

BASIS OF BEARING

THE NORTH LINE OF THE SOUTHEAST QUARTER (SE 1/4) OF SECTION 25, TOWNSHIP 20 SOUTH, RANGE 61 EAST M.D.M. CLARK COUNTY, NEVADA, BEING THE CENTERLINE OF WASHINGTON AVENUE, BEARS N 89°05'43" W AS SHOWN ON CERTAIN PARCEL MAP RECORDED IN FILE 86 OF PARCELS PAGE 48 CLARK COUNTY, NEVADA OFFICIAL RECORDS

Call before you Dig.
 88364
 1-800-227-2600
 UNDERGROUND SERVICE (USA)

CALL BEFORE YOU CRANE
 1-702-227-2929

Call before you UnderGround
 1-702-455-7511
 1-702-229-6611