

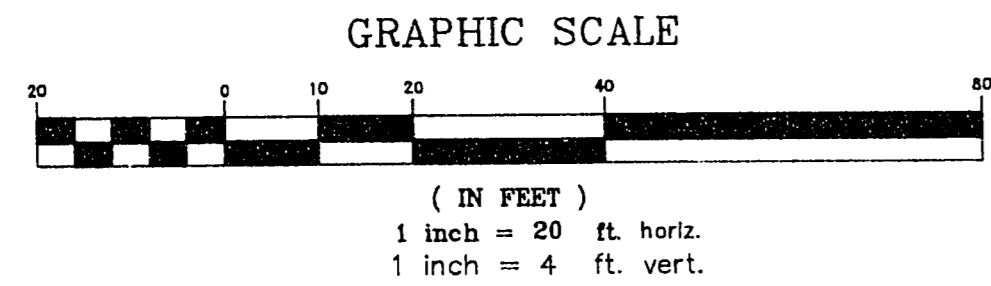
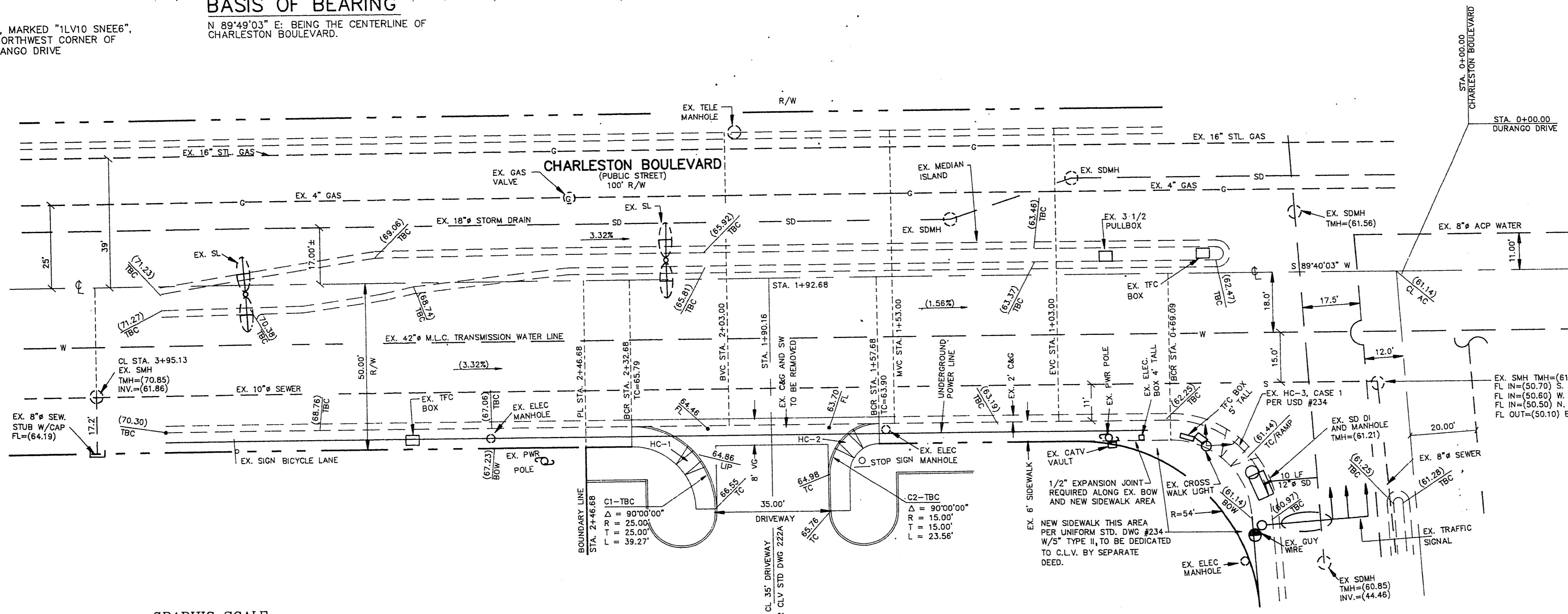
**BENCHMARK**

BEING A RIVET AND PLATE, MARKED "1LV10 SNEEG", IN TOP OF CURB IN THE NORTHWEST CORNER OF DEL REY STREET AND DURANGO DRIVE ELEV=2663.04 FEET

**BASIS OF BEARING**

N 89°49'03" E BEING THE CENTERLINE OF CHARLESTON BOULEVARD.

**NORTH**  
**SCALE 1" = 20' HORIZ.**  
**1" = 4' VERT.**

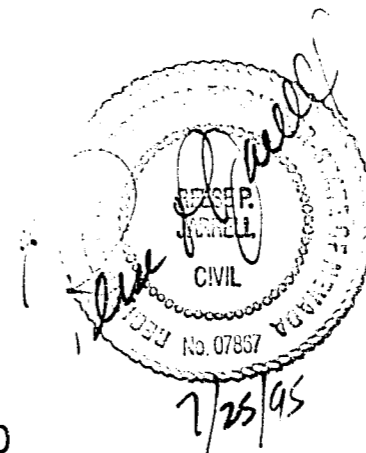


**CHARLESTON BLVD.**  
(PUBLIC STREET) 100' R/W  
**PLAN & PROFILE**

**HDCP RAMP TABLE (STD. DWG. #235)**

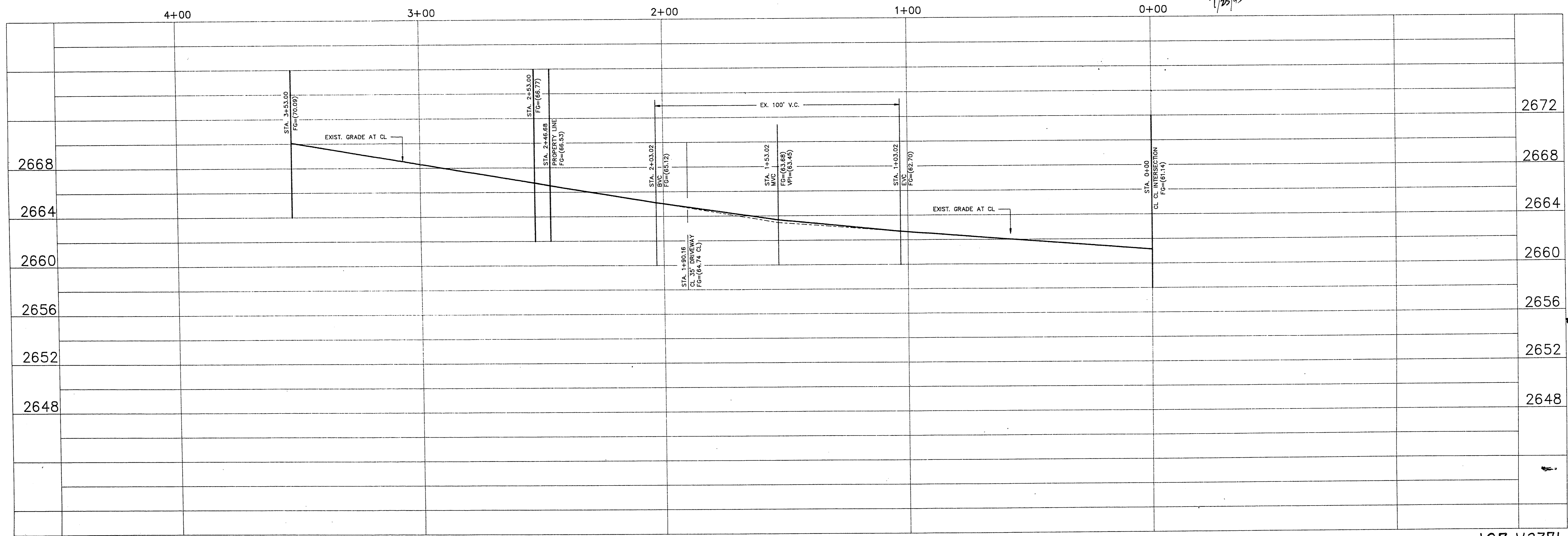
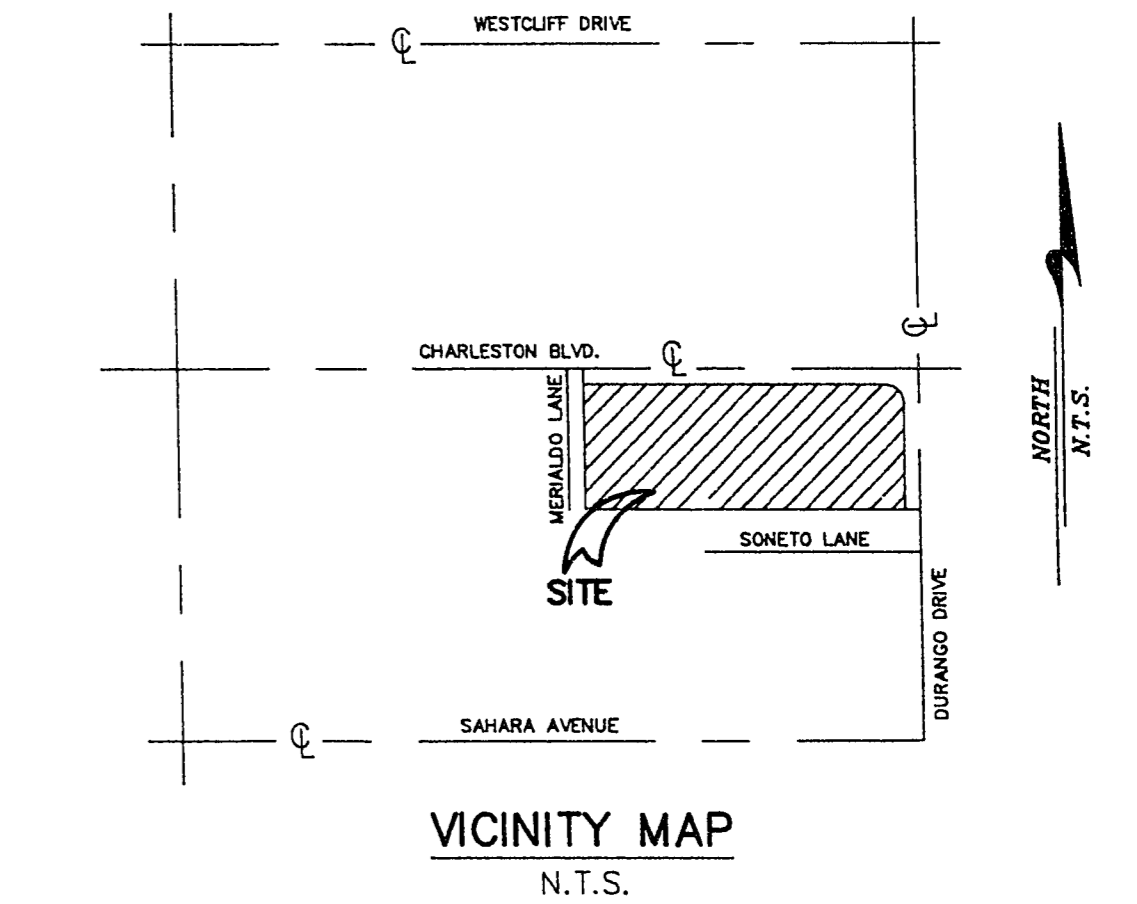
No.	CASE No.	A	B	Z
HC-1	1	12.0'	4.5'	2.00'
HC-2	1	4.5'	15.0'	2.00'
HC-3	1	8.0'	8.0'	2.00'

**DURANGO DRIVE**  
SEE SHEET 4 OF 5



**LEGEND**

- AC ASPHALT
- BOW BACK OF SIDEWALK
- 0.00 PROPOSED GRADE
- (0.00) EXISTING GRADE
- GB GRADE BREAK
- TC TOP OF CURB
- FG FINISH GRADE
- FL FLOWLINE
- STA. CENTERLINE STATION
- PL PROPERTY LINE
- SMH SEWER MANHOLE
- EX EXISTING
- TBC TOP BACK OF CURB
- CL CENTERLINE STREET
- BL BOUNDARY LINE
- PROPOSED "A" TYPE CURB
- EXISTING CURB & GUTTER
- S PROPOSED SEWER
- EXISTING SEWER
- EXISTING WATER
- FIRE HYDRANT ASSEMBLY
- EXISTING STREET LIGHT
- EXISTING SIGN



**PLAN & PROFILE**  
**CHARLESTON BLVD.**  
 STA. 0+00 TO STA. 3+95.13  
**GRUMPYS CONVENIENCE STORE**  
**G.A.R. ASSOCIATES LTD.**  
 CONSULTING ENGINEERS & LAND SURVEYORS  
 P.O. BOX 28631  
 LAS VEGAS, NEVADA 89126  
 (702) 876-2341  
 JOB NUMBER 224-95-001  
 SHEET 5 OF 5 SHEETS  
 REV DATE BY DESCRIPTION  
 107-V2371  
 25-2-163  
 CHAPP 07-24-95 85/TA/80J