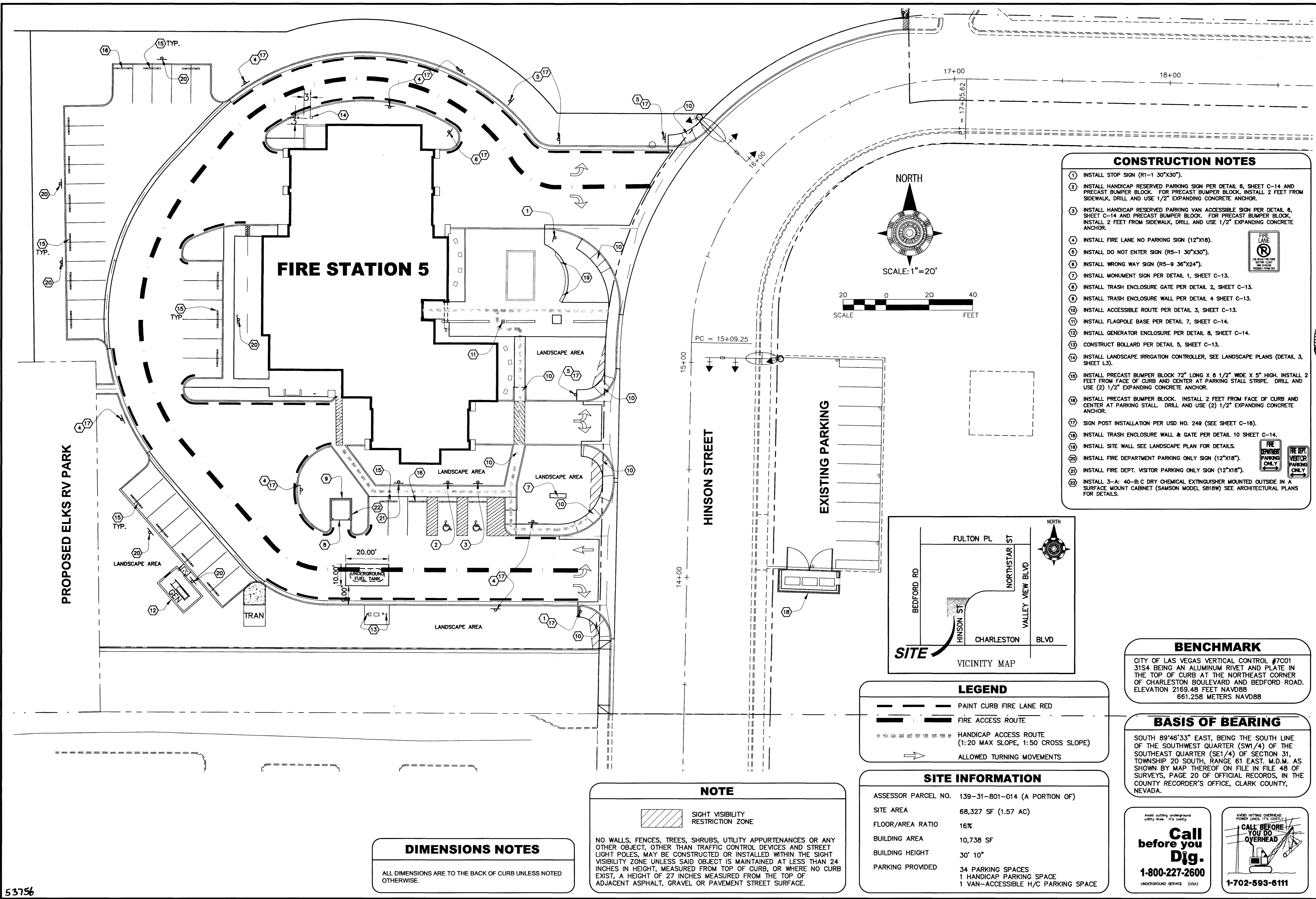


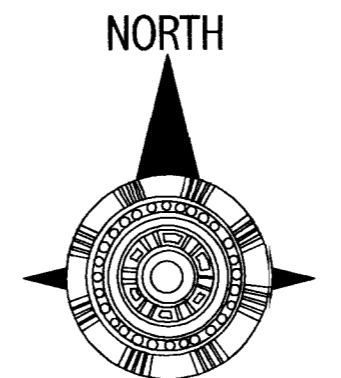
May 14, 2003 - 8:02am

Igracia

F:\AZ02084\Cadd\dwg\s05_04.dwg

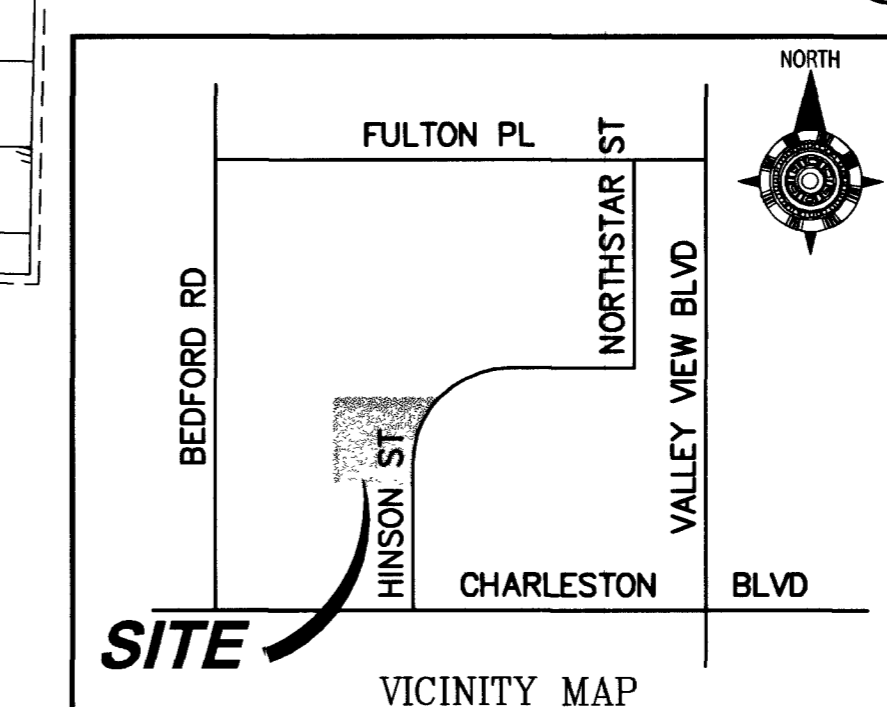


- ### CONSTRUCTION NOTES
1. INSTALL STOP SIGN (R1-1 30"x30").
 2. INSTALL HANDICAP RESERVED PARKING SIGN PER DETAIL 6, SHEET C-14 AND PRECAST BUMPER BLOCK. FOR PRECAST BUMPER BLOCK, INSTALL 2 FEET FROM SIDEWALK, DRILL AND USE 1/2" EXPANDING CONCRETE ANCHOR.
 3. INSTALL HANDICAP RESERVED PARKING VAN ACCESSIBLE SIGN PER DETAIL 6, SHEET C-14 AND PRECAST BUMPER BLOCK. FOR PRECAST BUMPER BLOCK, INSTALL 2 FEET FROM SIDEWALK, DRILL AND USE 1/2" EXPANDING CONCRETE ANCHOR.
 4. INSTALL FIRE LANE NO PARKING SIGN (12"x18").
 5. INSTALL DO NOT ENTER SIGN (R5-1 30"x30").
 6. INSTALL WRONG WAY SIGN (R5-9 36"x24").
 7. INSTALL MONUMENT SIGN PER DETAIL 1, SHEET C-13.
 8. INSTALL TRASH ENCLOSURE GATE PER DETAIL 2, SHEET C-13.
 9. INSTALL TRASH ENCLOSURE WALL PER DETAIL 4 SHEET C-13.
 10. INSTALL ACCESSIBLE ROUTE PER DETAIL 3, SHEET C-13.
 11. INSTALL FLAGPOLE BASE PER DETAIL 7, SHEET C-14.
 12. INSTALL GENERATOR ENCLOSURE PER DETAIL 8, SHEET C-14.
 13. CONSTRUCT BOLLARD PER DETAIL 5, SHEET C-13.
 14. INSTALL LANDSCAPE IRRIGATION CONTROLLER, SEE LANDSCAPE PLANS (DETAIL 3, SHEET L3).
 15. INSTALL PRECAST BUMPER BLOCK 72" LONG X 6 1/2" WIDE X 5" HIGH. INSTALL 2 FEET FROM FACE OF CURB AND CENTER AT PARKING STALL STRIPE. DRILL AND USE (2) 1/2" EXPANDING CONCRETE ANCHOR.
 16. INSTALL PRECAST BUMPER BLOCK. INSTALL 2 FEET FROM FACE OF CURB AND CENTER AT PARKING STALL. DRILL AND USE (2) 1/2" EXPANDING CONCRETE ANCHOR.
 17. SIGN POST INSTALLATION PER USD NO. 249 (SEE SHEET C-16).
 18. INSTALL TRASH ENCLOSURE WALL & GATE PER DETAIL 10 SHEET C-14.
 19. INSTALL SITE WALL SEE LANDSCAPE PLAN FOR DETAILS.
 20. INSTALL FIRE DEPARTMENT PARKING ONLY SIGN (12"x18").
 21. INSTALL FIRE DEPT. VISITOR PARKING ONLY SIGN (12"x18").
 22. INSTALL 3-A: 40-B-C DRY CHEMICAL EXTINGUISHER MOUNTED OUTSIDE IN A SURFACE MOUNT CABINET (SAMSON MODEL S818W) SEE ARCHITECTURAL PLANS FOR DETAILS.



SCALE: 1"=20'

SCALE
0 20 40
FEET



- ### LEGEND
- PAINT CURB FIRE LANE RED
 - FIRE ACCESS ROUTE
 - HANDICAP ACCESS ROUTE (1:20 MAX SLOPE, 1:50 CROSS SLOPE)
 - ALLOWED TURNING MOVEMENTS

SITE INFORMATION

ASSESSOR PARCEL NO.	139-31-801-014 (A PORTION OF)
SITE AREA	68,327 SF (1.57 AC)
FLOOR/AREA RATIO	16%
BUILDING AREA	10,738 SF
BUILDING HEIGHT	30' 10"
PARKING PROVIDED	34 PARKING SPACES 1 HANDICAP PARKING SPACE 1 VAN-ACCESSIBLE H/C PARKING SPACE

BENCHMARK

CITY OF LAS VEGAS VERTICAL CONTROL #7C01 31S4 BEING AN ALUMINUM RIVET AND PLATE IN THE TOP OF CURB AT THE NORTHEAST CORNER OF CHARLESTON BOULEVARD AND BEDFORD ROAD. ELEVATION 2169.48 FEET NAVD88 661.258 METERS NAVD88

BASIS OF BEARING

SOUTH 89°46'33" EAST, BEING THE SOUTH LINE OF THE SOUTHWEST QUARTER (SW1/4) OF THE SOUTHEAST QUARTER (SE1/4) OF SECTION 31, TOWNSHIP 20 SOUTH, RANGE 61 EAST, M.D.M. AS SHOWN BY MAP THEREOF ON FILE IN FILE 48 OF SURVEYS, PAGE 20 OF OFFICIAL RECORDS, IN THE COUNTY RECORDER'S OFFICE, CLARK COUNTY, NEVADA.

NOTE

SIGHT VISIBILITY RESTRICTION ZONE

NO WALLS, FENCES, TREES, SHRUBS, UTILITY APPURTENANCES OR ANY OTHER OBJECT, OTHER THAN TRAFFIC CONTROL DEVICES AND STREET LIGHT POLES, MAY BE CONSTRUCTED OR INSTALLED WITHIN THE SIGHT VISIBILITY ZONE UNLESS SAID OBJECT IS MAINTAINED AT LESS THAN 24 INCHES IN HEIGHT, MEASURED FROM TOP OF CURB, OR WHERE NO CURB EXIST, A HEIGHT OF 27 INCHES MEASURED FROM THE TOP OF ADJACENT ASPHALT, GRAVEL OR PAVEMENT STREET SURFACE.

DIMENSIONS NOTES

ALL DIMENSIONS ARE TO THE BACK OF CURB UNLESS NOTED OTHERWISE.

PROJ NO:	AZ02084
DESIGN:	LG
DATE:	05/14/03
SCALE:	AS SHOWN
CADFILE:	FS05_04

PROFESSIONAL ENGINEER-STATE OF NEVADA
ALLEN PAVELAK
CIVIL
No. 9029

STAMP DATE: 5-14-03
EXP. DATE: 12/31/03

5320 N. Buffalo Drive
Suite 106 NV 89129-7110
Las Vegas, NV 702-398-5478
Fax: 702-398-3758
Web: aztecinc

AZTEC

CITY OF LAS VEGAS
FIRE STATION NO. 5
SITE PLAN
ON-SITE SIGNAGE AND STRIPING

SHEET
C-4
4 OF 23 SHEETS
PROJECT ID
630.V27-2

53756