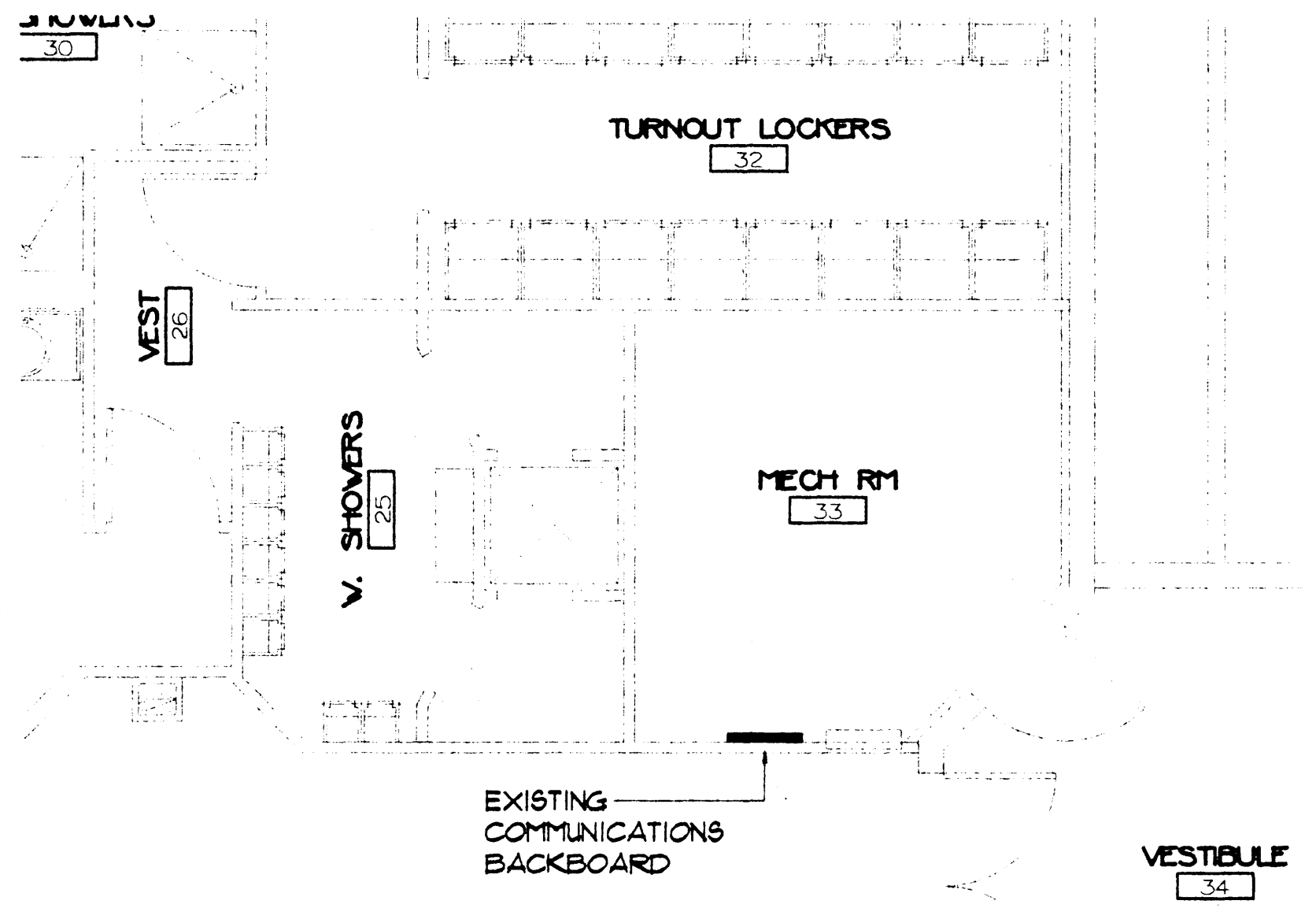


1 ELECTRICAL POWER PLAN
E-1 SCALE: 1/4"=1'-0"



2 ELECTRICAL POWER PLAN -MECHANICAL ROOM
E-1 SCALE: 1/4"=1'-0"

POWER BREAKDOWN IN KILOWATTS -ADDED LOAD

ELECTRICAL CHARACTERISTICS: 120/208 VOLT, 3 PHASE, 4 WIRE

ITEM	LIGHTING	RECEPT.	FRAC HP MOTOR	LARGE MOTORS	KITCHEN	ELEC. HEAT				TOTAL
OFFICE	0.45									0.45
OFFICE		2.9								2.9
OFFICE A/C				2.1						2.1
										0.0
										0.0
										0.0
TOTALS	0.45	2.9	0.0	2.1	0.0	0.0	0.0	0.0	0.0	5.45
DEMAND FACTORS	125%	1ST 10KVA AT 100% REMAIN. AT 50%	100%	100% +25% OF LARGEST MOTOR	65%	125%	100%	100%	100%	
DEMAND LOAD	0.56	2.9	0.0	2.1	0.0	0.0	0.0	0.0	0.0	5.56

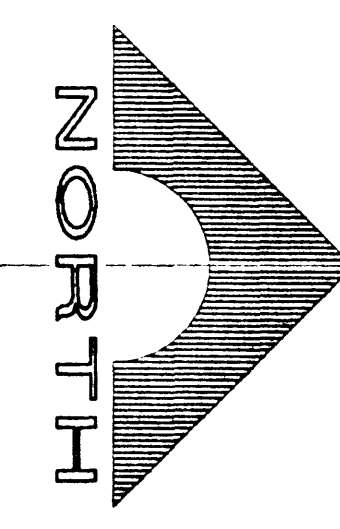
KVA OF LARGEST MOTOR = 2.1 TOTAL AMPERES: 15.40

PANEL C

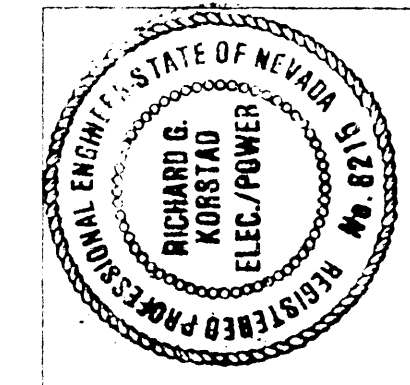
LOADS VA				LOAD	CB AMP./P.	PHASE	CB AMP./P.	LOAD	CB AMP./P.	LOADS VA					
LTO	REC	MOTOR	HEAT							LTO	REC	MOTOR	HEAT		
				1	20/1		20/1	EXISTING BREAKER							
				3	20/1		20/1	EXISTING BREAKER							
				5	20/1		20/1								
				7	20/1		20/1								
				9	20/1		20/1								
				11	20/1		20/1								
				13	20/1		20/1								
				15	20/1		20/1								
				17	20/1		20/1								
				19	20/1		20/1	NEW RECEPTABLES							
				21	20/1		20/1	NEW RECEPTABLES							
				23	20/1		20/1	NEW RECEPTABLES							
				25	20/1		20/1	NEW RECEPTABLES							
				27	20/1		20/1	NEW LIGHTS							
				29	20/1		20/1	NEW LIGHTS							
				31	20/1		20/1	EXISTING SPACE							
				33	20/1		20/1								
				35	20/1		20/1								
				37	20/1		20/1								
				38	20/1		20/1								
				41	20/1		20/1								
0.00	2.00	2.10	0.00							0.45	0.98	0.00	0.00		
SUB TOTALS KVA				VOLTAGE: 120/208V, 3PH., 4W.				REMARKS:				SUB TOTALS KVA			
PHASE LOADING				BUS RATING: 225 AMPS				JOB NAME: FIRE TRAINING CENTER				PHASE LOADING			
LTO	REC	MOTOR	HEAT	PHASE A	PHASE B	PHASE C	TOTAL	CONNECTED KVA	DEMAND	SPARE	ADJUSTED KVA	TOTAL CONNECTED KVA	TOTAL ADJUSTED KVA	PHASE TO PHASE VOLTAGE	ADJUSTED PANEL AMPERAGE
0.00	1.56	0.00	0.00	0.52	0.52	0.52	1.56	0.45	2.98	2.10	5.51	5.82	208.00	15.63	
0.30	0.70	1.05	0.00	0.23	0.23	0.23	0.70	1.25	1.00	1.00	3.25	3.25	208.00	17.71	
0.15	0.70	1.05	0.00	0.23	0.23	0.23	0.70	1.00	1.00	1.00	3.00	3.00	208.00	15.63	
CONT	DEMAN	SPARE	ADJ.	KVA											
1.56	1.00	1.00	1.56	5.12				5.51			5.51	5.82			
2.05	1.00	1.00	2.13	6.18				6.18			6.18	6.18			
1.90	1.00	1.00	1.84	4.74				4.74			4.74	4.74			
5.51			5.82	17.71				17.71			17.71	17.71			

- ELECTRICAL NOTES
- PROVIDE 20A-1P CIRCUIT BREAKER TO MATCH EXISTING IN SPACE AS INDICATED BY CIRCUIT NUMBER
 - RELOCATED DUPLEX RECEPTACLE.
 - ROUTE 3/4" CONDUIT WITH NYLON FULLSTRING ABOVE CEILING TO BUILDING COMMUNICATIONS BACKBOARD FOR TELEPHONE OUTLET. CENTER WILL PULL AND TERMINATE CABLE. PROVIDE DUAL RJ-11 JACKS AND IVORY WALL PLATE.
 - ROUTE 3/4" CONDUIT ABOVE CEILING TO BUILDING COMMUNICATIONS BACKBOARD. PULL IN (1/4" PAIR CATEGORY 5 UTP CABLE AND LABEL EACH END WITH ROOM NUMBER. INSTALL CATEGORY 5 UTP CABLE PER EIA/TIA STANDARDS. LEAVE APPROXIMATELY 10' LOOSE COILED CABLE AT COMMUNICATION BACKBOARD AND 5' AT JACK IN OFFICE. PROVIDE IVORY WALL PLATE WITH DUAL RJ-45 JACKS. THE CITY WILL DO ALL FINAL TERMINATIONS.
 - EXISTING DUPLEX RECEPTACLE TO REMAIN OPERABLE. REPLACE DEVICE WITH TVSS RECEPTACLE. SEE SYMBOL LEGEND FOR TYPE. *NEXT TIME SPEC STANDARD RECEPTACLE*
 - EXISTING TELEPHONE OUTLET TO REMAIN.
 - EXISTING DUPLEX RECEPTACLE AND ASSOCIATED CIRCUITRY SHALL BE RELOCATED AS INDICATED FOR INSTALLATION OF NEW DOOR.
 - PROVIDE 15A-2P "HACR" RATED CIRCUIT BREAKER TO MATCH EXISTING IN SPACE AS INDICATED BY CIRCUIT NUMBER.

- GENERAL NOTE
- ALL WALL PENETRATIONS FOR CONDUITS SHALL BE COMPLETELY CAULKED AND SEALED
 - CONTRACTOR SHALL LABEL EACH DEVICE PLATE WITH PRESSURE SENSITIVE (BLACK) SELF-ADHESIVE LABELING TAPE INDICATING CIRCUIT NUMBER AND PANELBOARD NUMBER WHICH SERVES THE DEVICE.



DATE	
BY	
CHECKED	
APPROVED	



WINSTON H. HENDERSON ARCHITECTS
 2303 EAST SAHARA AVENUE-SUITE 201
 LAS VEGAS, NEVADA 89104
 OFFICE (702) 457-8895 FAX (702) 457-8891

FIRE TRAINING CENTER IMPROVEMENTS CITY OF LAS VEGAS NEVADA
ELECTRICAL POWER PLAN

JOB NO:
 DESIGNED: F.C.B.
 DRAWN: KMI
 CHECKED:

SHEET
E-2
 1 OF 2