

Door Schedule

Door No.	Size	Rating	Type	Material	Finish	Hardware		Frame		Details			
						No.	Additional Notes	Rating	Material	Finish	Head	Jamb	Jamb
101	3'-0" X 7'-0" X 1 3/4"	B	SCUD	IP-1	1	SEE DOOR NOTES, THIS PAGE		HM	IP-1	4/A1	4/A1	4/A1	.
102A	3'-0" X 7'-0" X 1 3/4"	C	SCUD	IP-1	2	SEE DOOR NOTES, THIS PAGE		HM	IP-1	4/A1	4/A1	4/A1	.
102B	3'-0" X 7'-0" X 1 3/4"	F	ALUM.	CLEAR ANODIZED	3	STOREFRONT DOOR W/ TEMP. GLASS		ALUM.	E	5/A1	5/A1	5/A1	⊙
103	3'-0" X 7'-0" X 1 3/4"	C	SCUD	IP-1	4	SEE DOOR NOTES, THIS PAGE		HM	IP-1	4/A1	4/A1	4/A1	.
105	3'-0" X 7'-0" X 1 3/4"	C	SCUD	IP-1	2	SEE DOOR NOTES, THIS PAGE		HM	IP-1	4/A1	4/A1	4/A1	.
106	3'-0" X 7'-0" X 1 3/4"	C	SCUD	IP-1	4	SEE DOOR NOTES, THIS PAGE		HM	IP-1	4/A1	4/A1	4/A1	.
106A	3'-0" X 7'-0" X 1 3/4"	C	SCUD	IP-1	2	SEE DOOR NOTES, THIS PAGE		HM	IP-1	4/A1	4/A1	4/A1	.
107	3'-0" X 7'-0" X 1 3/4"	D	HM	IP-1	2	LOUVER, SEE MECH. DIAG.		HM	IP-1	3/A1	3/A1	3/A1	.
108	3'-0" X 7'-0" X 1 3/4"	D	HM	IP-1	11	NO LOUVER • THIS DOOR - RFI 12		HM	IP-1	3/A1	3/A1	3/A1	.
109	3'-0" X 7'-0" X 1 3/4"	G	HM	IP-1	1	SEE DOOR NOTES, THIS PAGE		HM	IP-1	3/A1	3/A1	3/A1	.
110A	4'-0" X 7'-0" X 1 3/4"	E	HM	IP-1	5			HM	IP-1	4/A1	4/A1	4/A1	A
110B	13'-4" X 14'-0"	A	STEEL	A	-	SECTIONAL ROLL UP GARAGE DOOR		STEEL	.	12/A101	4/A101	4/A101	.
110C	13'-4" X 14'-0"	A	STEEL	A	-	SECTIONAL ROLL UP GARAGE DOOR		STEEL	.	12/A101	4/A101	4/A101	.
110D	3'-0" X 7'-0" X 1 3/4"	G	HM	EP-2	6	SEE EXTERIOR FINISH SCHEDULE		HM	IP-1/EP-2	2/A1	2/A1	2/A1	A
111	3'-0" X 7'-0" X 1 3/4"	G	HM	IP-1	1	LOUVER, SEE MECH. DIAG.		HM	IP-1	3/A1	3/A1	3/A1	.
112A	2'-6" X 7'-0" X 1 3/4"	I	SCUD	IP-1	9	SEE DOOR NOTES, THIS PAGE		HM	IP-1	4/A1	4/A1	4/A1	.
112B	2'-6" X 7'-0" X 1 3/4"	I	SCUD	IP-1	9	SEE DOOR NOTES, THIS PAGE		HM	IP-1	4/A1	4/A1	4/A1	.
112C	2'-6" X 7'-0" X 1 3/4"	I	SCUD	IP-1	9	SEE DOOR NOTES, THIS PAGE		HM	IP-1	4/A1	4/A1	4/A1	.
114A	3'-0" X 7'-0" X 1 3/4"	H	SCUD	IP-1	B	SEE DOOR NOTES, THIS PAGE		HM	IP-1	4/A1	4/A1	4/A1	.
114B	3'-0" X 7'-0" X 1 3/4"	H	SCUD	IP-1	B	SEE DOOR NOTES, THIS PAGE		HM	IP-1	4/A1	4/A1	4/A1	.
115A	3'-0" X 7'-0" X 1 3/4"	C	SCUD	IP-1	2	SEE DOOR NOTES, THIS PAGE		HM	IP-1	4/A1	4/A1	4/A1	.
115B	3'-0" X 7'-0" X 1 3/4"	C	SCUD	IP-1	2	SEE DOOR NOTES, THIS PAGE		HM	IP-1	4/A1	4/A1	4/A1	.
116	3'-0" X 7'-0" X 1 3/4"	C	SCUD	IP-1	4	SEE DOOR NOTES, THIS PAGE		HM	IP-1	4/A1	4/A1	4/A1	.
119	3'-0" X 7'-0" X 1 3/4"	C	SCUD	IP-1	12	SEE DOOR NOTES, THIS PAGE		HM	IP-1	4/A1	4/A1	4/A1	.
120A	3'-0" X 7'-0" X 1 3/4"	C	SCUD	IP-1	2	SEE DOOR NOTES, THIS PAGE		HM	IP-1	4/A1	4/A1	4/A1	.
120B	3'-0" X 7'-0" X 1 3/4"	C	SCUD	IP-1	2	SEE DOOR NOTES, THIS PAGE		HM	IP-1	4/A1	4/A1	4/A1	.
120C	3'-0" X 7'-0" X 1 3/4"	D	HM	EP-2	10	SEE EXTERIOR FINISH SCHEDULE		HM	IP-1/EP-2	2/A1	2/A1	2/A1	A
121	3'-0" X 7'-0" X 1 3/4"	C	SCUD	IP-1	4	SEE DOOR NOTES, THIS PAGE		HM	IP-1	4/A1	4/A1	4/A1	.
122	3'-0" X 7'-0" X 1 3/4"	C	SCUD	IP-1	4	SEE DOOR NOTES, THIS PAGE		HM	IP-1	4/A1	4/A1	4/A1	.
131	3'-0" X 7'-0" X 1 3/4"	H	SCUD	IP-1	B	SEE DOOR NOTES, THIS PAGE		HM	IP-1	4/A1	4/A1	4/A1	.
133A	4'-0" X 7'-0" X 1 3/4"	E	HM	IP-1	5			HM	IP-1	4/A1	4/A1	4/A1	A
133B	4'-0" X 7'-0" X 1 3/4"	E	HM	IP-1	5			HM	IP-1	4/A1	4/A1	4/A1	A
133C	13'-4" X 14'-0"	A	STEEL	A	-	SECTIONAL ROLL UP GARAGE DOOR		STEEL	.	12/A101	4/A101	4/A101	.
133D	13'-4" X 14'-0"	A	STEEL	A	-	SECTIONAL ROLL UP GARAGE DOOR		STEEL	.	12/A101	4/A101	4/A101	.
133E	13'-4" X 14'-0"	A	STEEL	A	-	SECTIONAL ROLL UP GARAGE DOOR		STEEL	.	12/A101	4/A101	4/A101	.
133F	13'-4" X 14'-0"	A	STEEL	A	-	SECTIONAL ROLL UP GARAGE DOOR		STEEL	.	12/A101	4/A101	4/A101	.
133G	3'-0" X 7'-0" X 1 3/4"	G	HM	EP-1	6	SEE EXTERIOR FINISH SCHEDULE		HM	IP-1/EP-2	2/A1	2/A1	2/A1	A
133H	3'-0" X 7'-0" X 1 3/4"	G	HM	EP-1	10	SEE EXTERIOR FINISH SCHEDULE		HM	IP-1/EP-2	2/A1	2/A1	2/A1	A
134	3'-0" X 7'-0" X 1 3/4"	D	HM	IP-1	11	LOUVER, SEE MECH. DIAG.		HM	IP-1	3/A1	3/A1	3/A1	.
135	4'-0" X 7'-0" X 1 3/4"	E	HM	IP-1	11	LOUVER, SEE MECH. DIAG.		HM	IP-1	3/A1	3/A1	3/A1	.
136A	3'-0" X 7'-0" X 1 3/4"	D	HM	IP-1	11	LOUVER, SEE MECH. DIAG.		HM	IP-1	3/A1	3/A1	3/A1	.
136B	3'-0" X 7'-0" X 1 3/4"	D	HM	IP-1	11	LOUVER, SEE MECH. DIAG.		HM	IP-1	3/A1	3/A1	3/A1	.
138	3'-0" X 7'-0" X 1 3/4"	C	SCUD	IP-1	1	SEE DOOR NOTES, THIS PAGE		HM	IP-1	4/A1	4/A1	4/A1	.
139	3'-0" X 7'-0" X 1 3/4"	C	SCUD	IP-1	1	SEE DOOR NOTES, THIS PAGE		HM	IP-1	4/A1	4/A1	4/A1	.
140	3'-0" X 7'-0" X 1 3/4"	G	HM	EP-2	8	SEE EXTERIOR FINISH SCHEDULE		HM	IP-1/EP-2	2/A1	2/A1	2/A1	A
141	3'-0" X 7'-0" X 1 3/4"	G	HM	EP-2	8	SEE EXTERIOR FINISH SCHEDULE		HM	IP-1/EP-2	2/A1	2/A1	2/A1	A

Room Finish Schedule

Room No.	Room Name	Floor	Base	Use North oriented left as shown on sht. All for walls.				Ceiling
				North	East	South	West	
101	CAPTAIN'S OFFICE	CPT-1	RB-1	IP-1	IP-1	IP-1	IP-1	AC-1
102	HALL	-	-	IP-1	IP-1	IP-1	IP-1	AC-1
102A	ENTRY	-	-	IP-1	IP-1	IP-1	IP-1/IF-3	IP-1
103	RESTROOM	CFT-2	CUT-1	CT/G-2	CT/G-2	CT/G-2	CT/G-2	IP-VCT
104	RESCUE DORM	CPT-1	RB-1	IP-1/CR	IP-2	IP-1	IP-1/CR	AC-1
105	RESCUE OFFICE	CPT-1	RB-1	IP-1	IP-1	IP-1	IP-1	AC-1
106	RESTROOM	CFT-2	CUT-1	CT/G-2	CT/G-2	CT/G-2	CT/G-2	IP-VCT
106A	HALL	CPT-1	RB-1	IP-1	IP-1	IP-1	IP-1	AC-1
107	CLEAN ROOM	SC	RB-1	IP-1	IP-1/EP-Y	IP-1	IP-1	IP-1
108	TURNOUT LOCKERS	SC	RB-1	IP-1	IP-1	IP-1	IP-1	IP-1
109	MED. STORAGE	SC	RB-1	IP-1	IP-1	IP-1	IP-1	IP-1
110	RESCUE APPARATUS BAY	SC	CBT	EPY/IP-1	EPY/IP-1	EPY/IP-1	EPY/IP-1	IP-1
111	STORAGE	SC	RB-1	IP-1	IP-1	IP-1	IP-1	IP-1
112	PANTRY	-	-	IP-1	IP-1	IP-1	IP-1	IP-1
113	KITCHEN	-	-	IP-1	IP-1/IF-2	IP-1/IF-2	IP-1	IP-1
114	DINING ROOM	-	-	IP-1/CR	IP-1/CR	IP-1/IF-1	IP-1/CR	AC-1
115	DAYROOM	CPT-1	RB-1	IP-2/CR	IP-1/CR	IP-1/CR	IP-1/CR	AC-1
116	CAPTAIN'S DORM	CPT-1	RB-1	IP-1	IP-1/CR	IP-1/CR	IP-1	AC-1
117	CAPTAIN'S DORM	CPT-1	RB-1	IP-1	IP-1/CR	IP-1/CR	IP-1	AC-1
118	CAPTAIN'S BATH	CFT-2	CUT-1	CT/G-2	CT/G-2	CT/G-2	CT/G-2	IP-VCT
118A	VEST.	CPT-1	RB-1	IP-1	IP-1	IP-1	IP-1	AC-1
119	STORAGE	-	-	IP-1	IP-1	IP-1	IP-1	AC-1
120	HALL	-	-	IP-1	IP-3/IF-1	IP-1	IP-1	AC-1
121	BATH	CFT-2	CUT-1	CT/G-2	CT/G-2	CT/G-2	CT/G-2	IP-VCT
121A	VEST.	CPT-1	RB-1	IP-1	IP-1	IP-1	IP-1	AC-1
122	BATH	CFT-2	CUT-1	CT/G-2	CT/G-2	CT/G-2	CT/G-2	IP-VCT
122A	VEST.	CPT-1	RB-1	IP-1	IP-1	IP-1	IP-1	AC-1
123	DORM	CPT-1	RB-1	IP-1/CR	IP-1	--	IP-1/CR	AC-1
124	DORM	CPT-1	RB-1	IP-1/CR	IP-1	--	IP-1/CR	AC-1
125	DORM	CPT-1	RB-1	--	IP-1	IP-1/CR	IP-1/CR	AC-1
126	DORM	CPT-1	RB-1	--	IP-1	IP-1/CR	IP-1/CR	AC-1
127	DORM	CPT-1	RB-1	IP-1/CR	IP-1	--	IP-1/CR	AC-1
128	DORM	CPT-1	RB-1	IP-1/CR	IP-1	--	IP-1/CR	AC-1
129	DORM	CPT-1	RB-1	--	IP-1	IP-1/CR	IP-1/CR	AC-1
130	DORM	CPT-1	RB-1	IP-1	IP-1/CR	IP-1/CR	IP-1/CR	AC-1
131	EXERCISE ROOM	RUB-1	RB-1	IP-3	IP-1	IP-1/IF-3	IP-1/IF-3	AC-1
132	NOT USED	NOC 1	-	9/23/04	NOC 1	-	9/23/04	
133	ENGINE APPARATUS BAY	SC	CBT	EPY/IP-1	EPY/IP-1	EPY/IP-1	EPY/IP-1	IP-1
134	UTILITY CON.	SC	RB-1	IP-1	IP-1	IP-1	IP-1	IP-1
135	CLEAN ROOM	SC	RB-1	IP-1	IP-1/EP-Y	IP-1	IP-1	IP-1
136	TURNOUT LOCKERS	SC	RB-1	IP-1	IP-1	IP-1	IP-1	IP-1
137	SWITCHGEAR/COMPRESSOR	SC	--	EP-1	EP-1	EP-1	EP-1	EP-1
138	TELE/ELECT.	SC	RB-1	IP-1	IP-1	IP-1	IP-1	AC-1
139	JAN/STOR	SC	RB-1	IP-1/CT/G-2	IP-1/CT/G-2	IP-1	IP-1	IP-1
140	RESCUE DORM	CPT-1	RB-1	IP-1	IP-1/CR	IP-1/CR	IP-1/CR	AC-1
141	RESCUE DORM	CPT-1	RB-1	IP-1/CR	IP-1/CR	IP-1	IP-2	AC-1

Finishes & Materials (Manufacturer's for reference only - see specs.)

INTERIOR FINISHES:

SC SEALED CONCRETE W/ SMOOTH FINISH, SEE SPEC'S. USE "ASHFORD FORMULA" FOR CONCRETE SEALER - N.O.C. #4 1/2/04.

AC-1 ACOUSTICAL CEILING - SEE SPECIFICATIONS FOR COLOR & MFR.

IP-1 INTERIOR PAINT "ICI" (MFR 40 YY 15/084), COLOR: "SEED PEARL".

IP-2 INTERIOR PAINT "ICI" (MFR 30YR 34/084), COLOR: "TAUPEWOOD".

IP-3 INT. PAINT "ICI" (MFR 30YR 1/2/13), COLOR: "COACH LAMP COPPER".

EPY EPOXY PAINT, SEE SPEC'S, COLOR: "SEED PEARL".

CPT-1 CARPET BY "COLLINS & AIKMAN" FLOOR COVERINGS STYLE: MARTINIQUE. COLOR: "38405 KINGSTON".

CT CERAMIC TILE, SEE INTERIOR ELEVATIONS SHT. A81 & A82 FOR TILE PATTERN & COLORS.

CFT-1 18" X 18" CERAMIC FLOOR TILE TO MATCH "DAL TILE" - CONTINENTAL SLATE - COLOR "ASIAN BLACK" KCS53

CFT-2 2" X 2" CERAMIC FLOOR TILE TO MATCH "DAL TILE" - KEYSTONES - COLOR "EBONY" K3311.

CBT 18" CERAMIC BASE TILE TO MATCH "DAL TILE" - CONTINENTAL SLATE - COLOR "ASIAN BLACK" KCS53 (CUT FROM FIELD TILE, BASE TO BE 4" HIGH)

CUT-1 4-1/4" X 4-1/4" CERAMIC WALL TILE TO MATCH "DAL TILE" - *0135 CT - "ALMOND"

CUT-2 1" X 6" "LINER" CERAMIC WALL TILE TO MATCH "DAL TILE" - *K-11 - "BLACK"

CUT-3 2" X 2" CERAMIC WALL TILE TO MATCH "DAL TILE" - FERMABRITES GLOSS ALMOND 6465

CUT-4 2" X 2" CERAMIC WALL TILE TO MATCH "DAL TILE" - FERMABRITES GLOSS SABLE 6421

RUB-1 3/8" RUBBER FLOORING - NOT IN CONTRACT.

G-1 GROUT BY "LATICRETE INTERNATIONAL", SPECTRALOCK COLOR 22 "MIDNIGHT" (FLOOR GROUT COLOR)

G-2 GROUT BY "MAPEI", COLOR "BONE". (WALL GROUT COLOR)

RB-1 RUBBER BASE (4" H) BY "ROFFPE", COLOR F193 "BLACK-BROWN" (OR APPROVED EQ.)

CR CHAIR RAIL, SEE DETAIL 9/A104 FOR MORE INFORMATION.

LAM-1 BASE 4 OVERHEAD CABINETRY: LAMINATE BY "WILSONART" COLOR: #160-58 "IVORY BRUSHING".

LAM-2 COUNTERTOP LAMINATE BY "WILSONART", COLOR: #4623-60, "GRAPHITE NEBULA".

LAM-3 ACCENT LAMINATE BY "CHEMETAL" (METAL MICA), COLOR: #271, "VENETIAN HORIZONTAL".

SIL-1 3/4" SILICONE STONE SERIES, COLOR ROSA GREY GROUP B

NOTE: ALL INTERIOR SIDES OF ALL CASEWORK INCLUDING SHELVING SHALL RECEIVE WHITE MELAMINE FINISH ON ALL EXPOSED EDGES. (UNLESS NOTED OTHERWISE).

EXTERIOR FINISHES:

NOTE: SEE EXTERIOR FINISH LEGEND ON SHEET A41 FOR ALL EXTERIOR FINISH COLORS & MANUFACTURERS.

Finish Schedule Notes:

⊙ SEE REFLECTED CEILING PLAN FOR SPECIALITY CEILING

⊙ EPY UP TO 8'-0" AFF. (EPY COLOR TO MATCH IP-1) IP-1 8'-0" TO CEILING

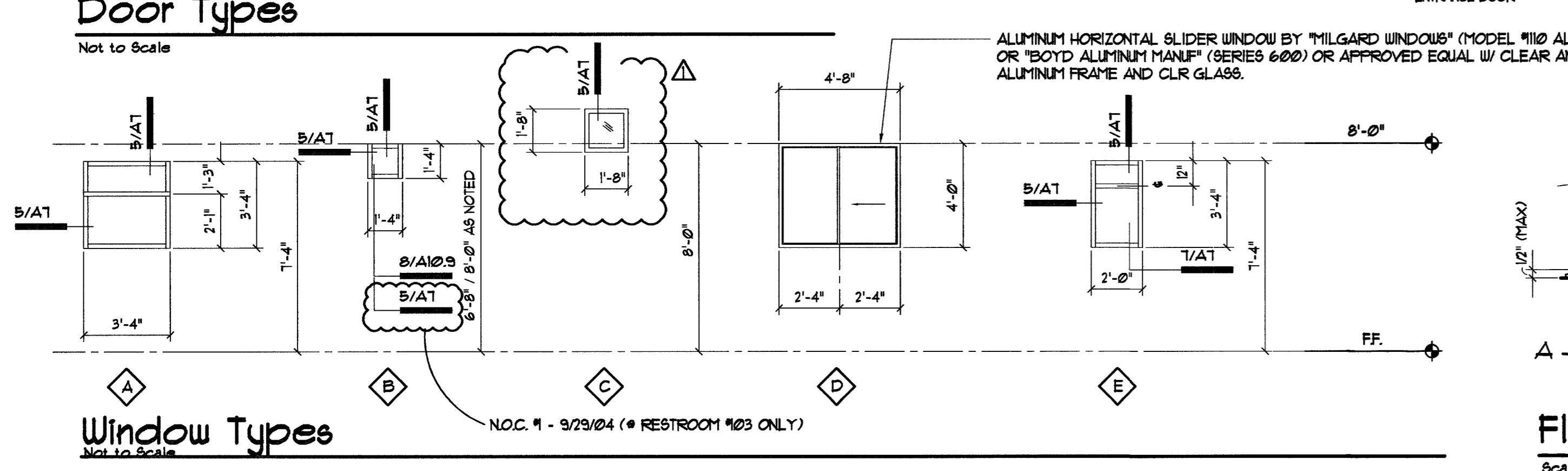
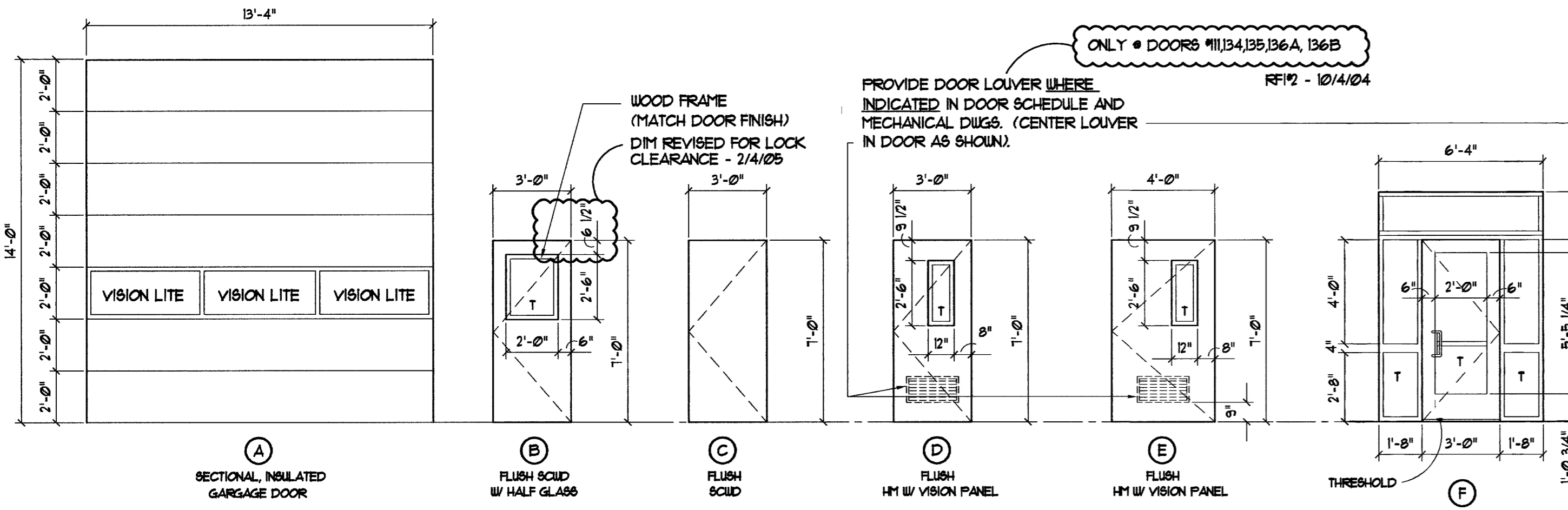
⊙ SEE DTL. 9/A104 FOR CHAIRRAIL DETAIL.

⊙ DO NOT INSTALL BASE BEHIND LOCKERS.

⊙ 8"X4"X16" EXPOSED CMU, SEE WALL LEGEND.

⊙ USE 9EM1 GLOSS PAINT • ALL RR CEILING.

⊙ PROVIDE BATT. INSUL. DIRECTLY ABOVE ACOUSTICAL CEILING. PROVIDE OPENING • RETURN AIR GRILLE OPENINGS.



Floor Transition Details

Scale: 3"=1'-0"



REVISIONS

BLDG DEPT - 5/21/04

CONSULTANT

CITY OF LAS VEGAS, NEVADA

FIRE STATION #8

Door & Window Schedules & Room Finish Schedules

OWNER: CITY OF LAS VEGAS

DEPARTMENT OF PUBLIC WORKS

ARCHITECTURAL SERVICES

ARCHITECT OF RECORD

SAMUEL D. TOLMAN, AIA, NCARB

400 EAST STEWART AVENUE

LAS VEGAS, NEVADA 89101

PHONE: (702) 226-8333