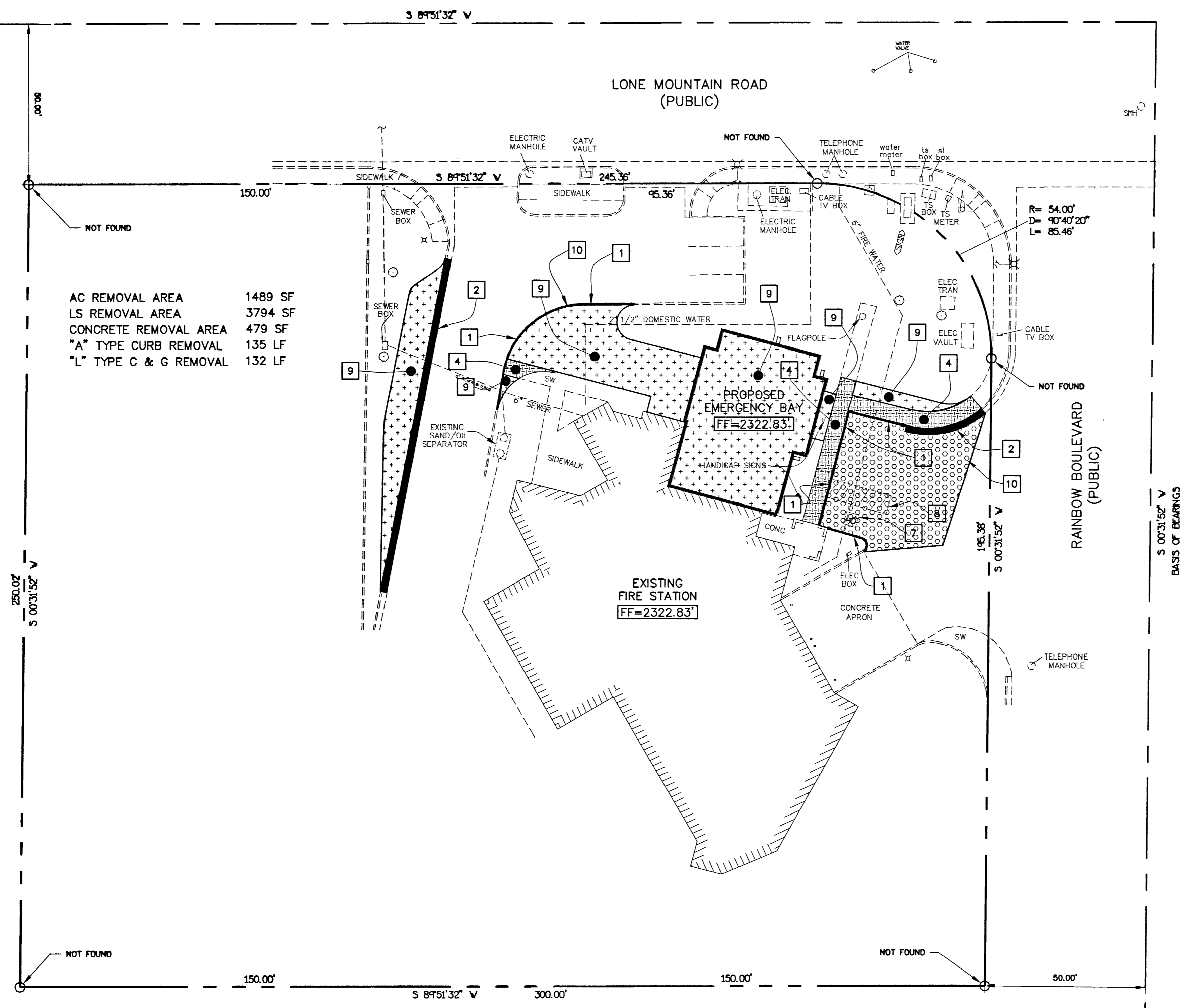
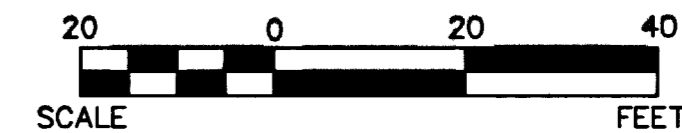


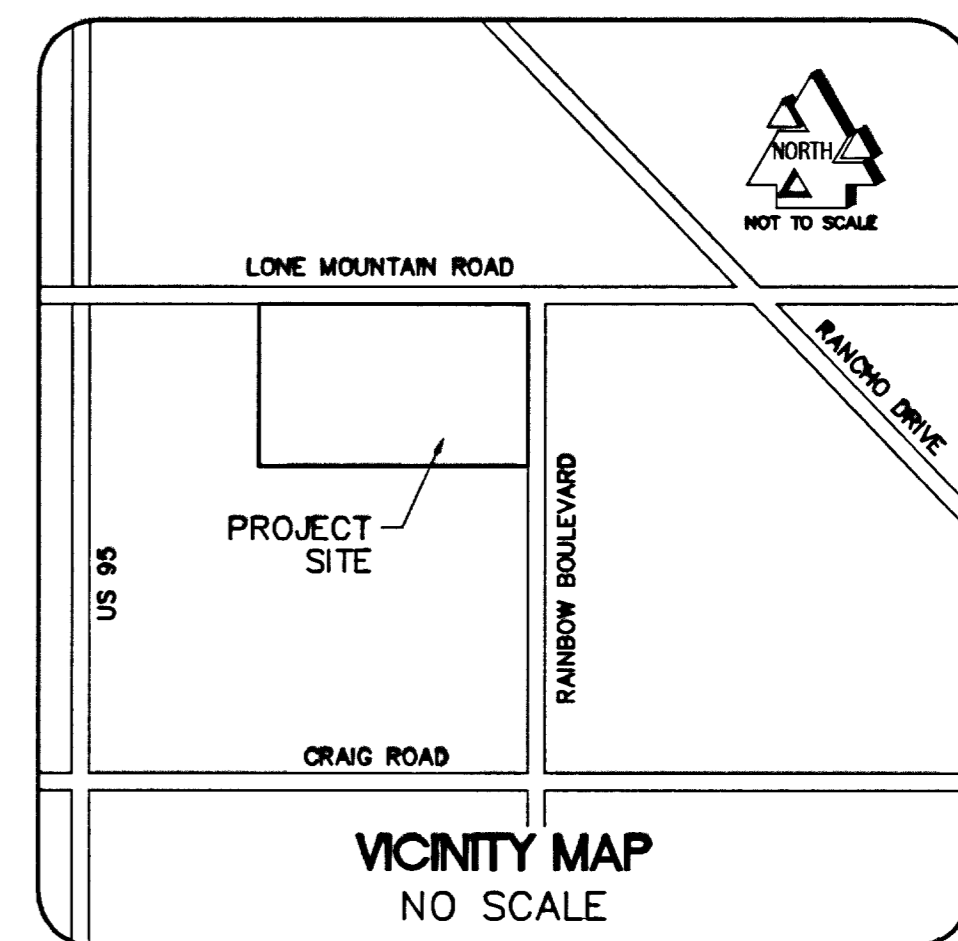
1"=20'



AC REMOVAL AREA 1489 SF
LS REMOVAL AREA 3794 SF
CONCRETE REMOVAL AREA 479 SF
"A" TYPE CURB REMOVAL 135 LF
"L" TYPE C & G REMOVAL 132 LF

REMOVALS NOTES

- 1 REMOVE EXISTING CURB
- 2 REMOVE EXISTING CURB & GUTTER
- 3 REMOVE EXISTING CONCRETE PAVEMENT
- 4 REMOVE EXISTING CONCRETE SIDEWALK
- 5 REMOVE EXISTING AC PAVEMENT
- 6 REMOVE EXISTING PARKING STRIPING
- 7 REMOVE EXISTING HANDICAP SYMBOL
- 8 REMOVE EXISTING HANDICAP STRIPING
- 9 REMOVE, STORE, AND REUSE EXISTING ROCK MULCH AND LANDSCAPING MATERIALS IN REMAINING LANDSCAPE AREAS. REROUTE EXISTING IRRIGATION LINES AS REQUIRED.
- 10 SAWCUT



Avoid cutting underground utility lines. It's costly.

Call before you Dig

1-800-227-2600

UNDERGROUND SERVICE (USA)

Avoid hitting overhead power lines. It's costly.

CALL BEFORE YOU DO OVERHEAD

1-702-593-6111

NOTICE TO CONTRACTORS

EXISTING UTILITY LOCATIONS SHOWN HEREON ARE APPROXIMATE ONLY. LOCATIONS OF UTILITIES, LINES, AND STRUCTURES HAVE BEEN DETERMINED BY SURFACE INDICATIONS AND THE BEST INFORMATION AVAILABLE FROM UTILITY COMPANIES.

IT SHALL BE THE CONTRACTOR'S RESPONSIBILITY TO DETERMINE THE EXACT VERTICAL AND HORIZONTAL LOCATION OF ALL EXISTING UNDERGROUND AND ABOVE GROUND UTILITIES, LINES, AND STRUCTURES PRIOR TO COMMENCING CONSTRUCTION.

NO REPRESENTATION IS MADE THAT ALL EXISTING UTILITIES ARE SHOWN HEREON. AZTEC ENGINEERING ASSUMES NO RESPONSIBILITY FOR UTILITIES NOT SHOWN, UTILITIES NOT SHOWN IN THEIR PROPER LOCATIONS, AND UTILITIES NOT OF RECORD.

THE CONTRACTOR SHALL POT HOLE AND FIELD VERIFY ALL UTILITIES PRIOR TO COMMENCING CONSTRUCTION. IF DISCREPANCIES IN UTILITY LOCATIONS ARE DISCOVERED DURING FIELD VERIFICATION, IT IS THE CONTRACTOR'S RESPONSIBILITY TO IMMEDIATELY NOTIFY AZTEC ENGINEERING.

CALL BEFORE YOU DIG: 1-800-227-2600
CALL BEFORE YOU DO OVERHEAD: (702) 593-6111

RECORD DRAWINGS

AS-BUILT INFORMATION WAS PROVIDED BY THE CONTRACTOR. AZTEC ASSUMES NO LIABILITY FOR ACCURACY OF IT'S CONTENTS.

BENCHMARK (FIRE STATION 9)

CITY OF LAS VEGAS BENCHMARK #1LV90-34SES RIVET AND PLATE IN NORTH TOP OF CURB OF LONE MOUNTAIN ROAD AND RAINBOW BLVD. ELEVATION = 2320.20 FEET, 707.199 METERS (NAVD88).

BASIS OF BEARINGS (FIRE STATION 9)

S00°31'52"W BEING THE EAST LINE OF THE NORTHEAST QUARTER OF THE NORTHEAST QUARTER OF SECTION 3, TOWNSHIP 20 SOUTH, RANGE 60 EAST, M.D.M., CITY OF LAS VEGAS, CLARK COUNTY, NEVADA, AS SHOWN PER FINAL MAP OF BRIDLE PATH ESTATES, BOOK 6, PAGE 99 OF PLATS.

PROJ NO	AZ01035
DESIGN	ABM/LC/PAS
DATE	05-02-03
SCALE	AS SHOWN
CAD FILE	19 C9.2

PROFESSIONAL ENGINEER-STATE OF NEVADA
ALLEN E. PAVELKA
CIVIL
No. 9029

STAMP DATE

3320 N. Buffalo Dr., Ste. 106 Las Vegas, NV 89129
Tel: (702) 396-3426 Fax: (702) 396-3756
Email: aztec@azteceng.com

AZTEC ENGINEERING

CITY OF LAS VEGAS FIRE STATION NO. 9
SITE IMPROVEMENTS
REMOVALS PLAN

SHEET
C9.2
12 of 17 Sheets
CLV PROJECT NO.
630.99

AS-BUILT DRAWINGS 05-02-03