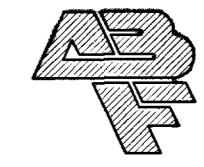


This document, including the ideas and designs it contains, is an instrument of professional services rendered by the Architect / Engineer. This document may not be used or copied in whole, or in part, for any purpose other than this specific project without the expressed written consent of Westar Architectural Group, Inc.



NOTES

- ① ROOF MOUNTED EXHAUST FAN, MOUNT PER MANUFACTURER'S INSTRUCTIONS.
- ② FLYMOVENT VEHICLE EXHAUST SYSTEM BY CONTRACTOR.
- ③ 12" Ø EXHAUST DUCT FROM VEHICLE EXHAUST SYSTEM, UP THRU ROOF TO EXHAUST FAN.
- ④ 45'-0" FLYMOVENT MODEL SBTA-45-5D SLIDING BALANCER TRACK (DOUBLE TRACK (HEAVY DUTY) WITH 25'-0" OF 4" DIAMETER HOSE) SUSPENDED FROM STRUCTURE PER MANUFACTURER'S INSTRUCTIONS.
- ⑤ FLYMOVENT SPRING RECOIL BALANCER WITH TROLLEY SYSTEM (TYP.)
- ⑥ VEHICLE EXHAUST CONTROL PANEL, FLYMOVENT MODEL 052-52401, MOUNT ON CMU WALL PER MANUFACTURER'S INSTRUCTIONS. COORDINATE LOCATION WITH GENERAL CONTRACTOR. COORDINATE ALL CONTROLS AND ELECTRICAL REQUIREMENTS WITH ELECTRICAL CONTRACTOR.
- ⑦ 25 FT. HOSE, FLYMOVENT MODEL SBTA-315.
- ⑧ REF. SHEET M12 FOR HVAC IN THIS AREA.
- ⑨ 20'-0" FLYMOVENT MODEL SBTA-20-5B SLIDING BALANCER TRACK (SINGLE TRACK WITH 25'-0" OF 4" DIAMETER HOSE) SUSPENDED FROM STRUCTURE PER MANUFACTURER'S INSTRUCTIONS.

NOTICE

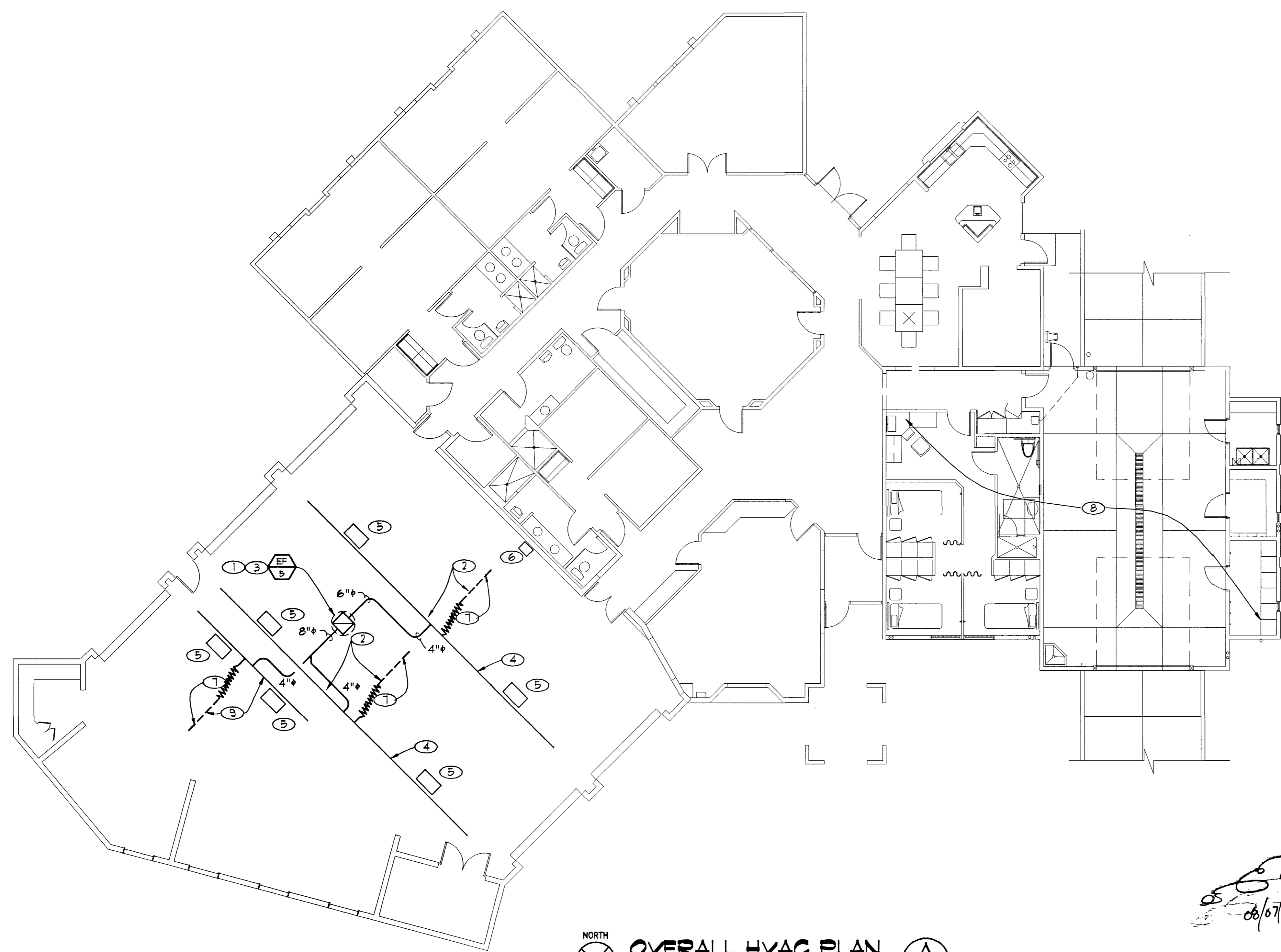
- 1. REFER TO DIFFUSER AND GRILLE SCHEDULE FOR ANY UNMARKED RUN-OUT SIZES.
- 2. COORDINATE EXACT ROUTING OF DUCTWORK AND PIPING WITH ALL TRADES, AND EXISTING STRUCTURE.
- 3. COORDINATE LOCATION OF ROOF MOUNTED EQUIPMENT WITH STRUCTURAL AND ARCHITECTURAL PLANS.
- 4. MAINTAIN 10 FT. MINIMUM DISTANCE FROM OUTSIDE AIR INTAKES TO PLUMBING VENTS AND EXHAUST OUTLETS.
- 5. VERIFY LOCATION AND SIZES OF ALL EXISTING PIPING, AND EQUIPMENT.
- 6. FIELD VERIFY AND COORDINATE SAW CUTTING OF SLAB, BEFORE BEGINNING OF WORK.
- 7. COORDINATE ALL GRILLES WITH ARCHITECTURAL PLANS AND ELECTRICAL LIGHTING PLANS.

VEHICLE EXHAUST SEQUENCE OF OPER.

- 1. UPON THE VEHICLE'S RETURN TO THE APPARATUS ROOM OF THE FIRE STATION, A FOUR INCH FLEXIBLE HOSE EQUIPPED WITH THE PNEUMATIC "GRABBER" NOZZLE THAT IS MANUALLY ATTACHED TO THE TAIL PIPE OF THE VEHICLE, THE EXHAUST FAN IS TURNED ON AUTOMATICALLY WHEN THE PRESSURE SENSORS, LOCATED IN THE DUCTING BETWEEN THE FLEXIBLE HOSE AND THE EXHAUST FAN, DETECT PRESSURE FROM THE EXHAUST SYSTEM OF THE VEHICLE. THE "GRABBER" NOZZLE IS INFLATED BY A MANUAL FILL VALE LOCATED ON THE FLEXIBLE HOSE JUST ABOVE THE SAFETY DISCONNECT. THE VEHICLE CAN THEN BE MOVED INTO THE FIRE HOUSE AND PARKED IN ITS DESIGNATED POSITION.
- 2. AS THE VEHICLE LEAVES THE APPARATUS ROOM, THE FLEXIBLE HOSE WITH THE "GRABBER" NOZZLE TRAVELS ALONG THE SLIDING BALANCER TRACK CONFIGURED WITH A SPRING COIL BALANCER. THE BALANCER IS USED TO KEEP EXCESS HOSE SLACK FROM THE FLOOR AND AWAY FROM THE APPARATUS. AT THE END OF THE TRAVEL OF THE BALANCER, THE UNCOUPLING VALVE RELEASES THE COMPRESSED AIR FROM THE "GRABBER" NOZZLE ALLOWING FOR SMOOTH UNCOUPLING OF THE EXHAUST REMOVAL SYSTEM. THE EXHAUST FAN IS SHUT DOWN AFTER A 3 TO 4 MINUTE TIME PERIOD AFTER DEPARTURE.

GENERAL NOTE

- 1. VEHICLE EXHAUST SYSTEM AND HOSES MUST BE ABLE TO WITHSTAND IN-STATION VEHICLE MAINTENANCE PROCEDURES WHILE CONNECTED TO SYSTEM.
- 2. MANUFACTURER SHALL PROVIDE MIN. 5-YEAR WARRANTY ON ALL HOSES. MANUFACTURER OF SYSTEM SHALL BE FLYMOVENT 1-800-938-1914.
- 3. INSTALLER SHALL BE FACTORY CERTIFIED FOR INSTALLATION.

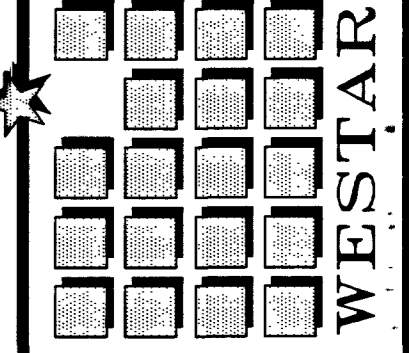


NORTH
OVERALL HVAC PLAN
1/8" = 1'-0"
F.S. NO. 2
M12-A

08/07/03

RECORD DRAWINGS
AS BUILT INFORMATION WAS PROVIDED BY THE CONTRACTOR. WESTAR ARCHITECTURAL ASSUMES NO LIABILITY FOR ACCURACY OF ITS CONTENTS.

WESTAR ARCHITECTURAL GROUP, INC. LAS VEGAS, NEVADA
ARCHITECTURE * PLANNING * PROJECT MANAGEMENT
3900 MEADOWS LANE SUITE 220 LAS VEGAS, NEVADA 89107
TELEPHONE: (702) 878-0000 FAX: (702) 878-8430



A FACILITY IMPROVEMENT FOR:
FIRE STATION 2, 7, & 9
LAS VEGAS, NEVADA

DATE	9/28/01
REVISION DESCRIPTION	OWNER CLARIFICATION
NUMBER	
PROJECT NUMBER	01633
DRAWN BY	SJF
CHECKED BY	KSD
DATE	09-13-01
SCALE	1/8" = 1'-0"
SHEET NUMBER	630,99
	M12-A