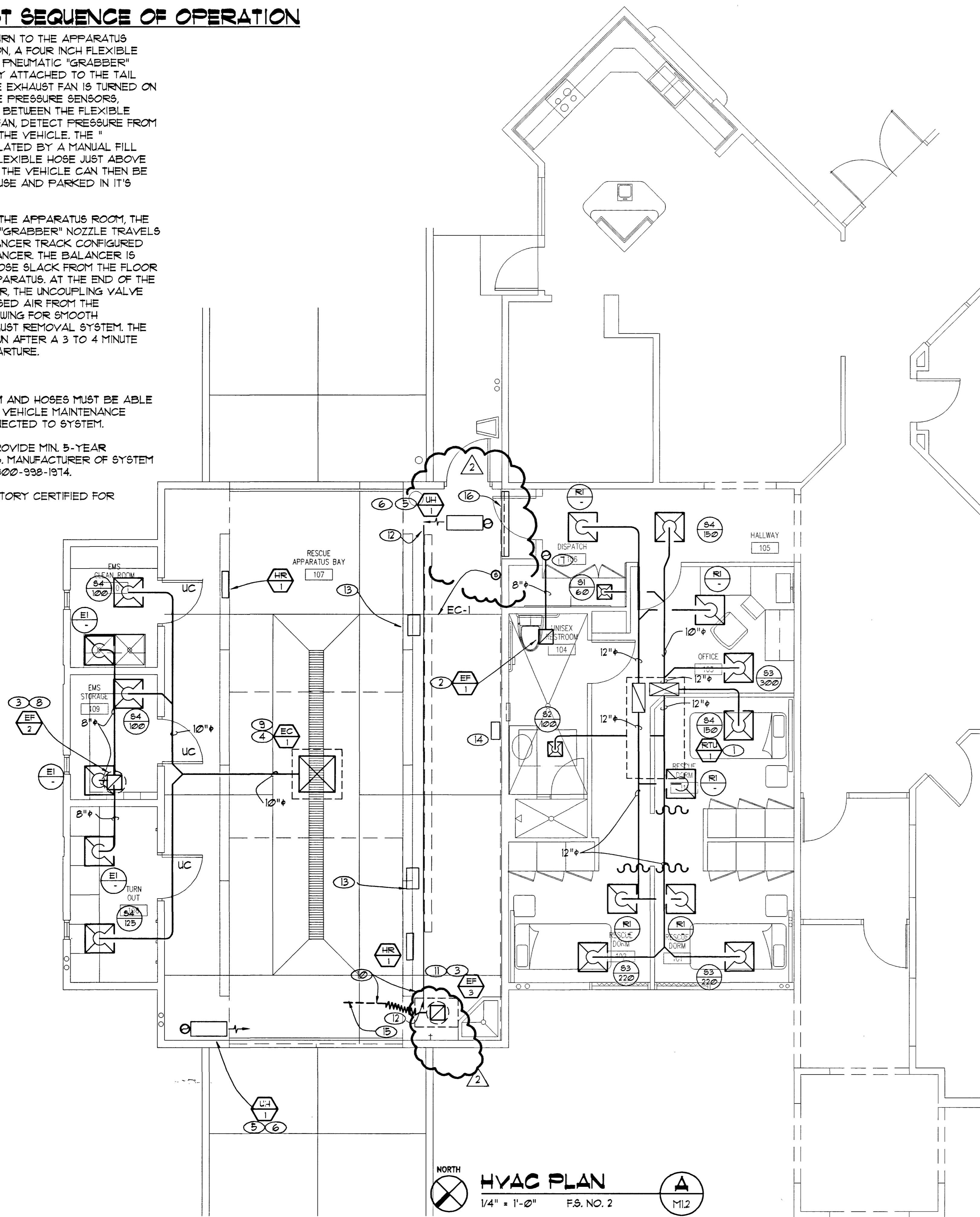


# VEHICLE EXHAUST SEQUENCE OF OPERATION

- UPON THE VEHICLE'S RETURN TO THE APPARATUS ROOM OF THE FIRE STATION, A FOUR INCH FLEXIBLE HOSE EQUIPPED WITH THE PNEUMATIC "GRABBER" NOZZLE THAT IS MANUALLY ATTACHED TO THE TAIL PIPE OF THE VEHICLE, THE EXHAUST FAN IS TURNED ON AUTOMATICALLY WHEN THE PRESSURE SENSORS, LOCATED IN THE DUCTING BETWEEN THE FLEXIBLE HOSE AND THE EXHAUST FAN, DETECT PRESSURE FROM THE EXHAUST SYSTEM OF THE VEHICLE. THE "GRABBER" NOZZLE IS INFLATED BY A MANUAL FILL VALE LOCATED ON THE FLEXIBLE HOSE JUST ABOVE THE SAFETY DISCONNECT. THE VEHICLE CAN THEN BE MOVED INTO THE FIRE HOUSE AND PARKED IN IT'S DESIGNATED POSITION.
- AS THE VEHICLE LEAVES THE APPARATUS ROOM, THE FLEXIBLE HOSE WITH THE "GRABBER" NOZZLE TRAVELS ALONG THE SLIDING BALANCER TRACK CONFIGURED WITH A SPRING COIL BALANCER. THE BALANCER IS USED TO KEEP EXCESS HOSE SLACK FROM THE FLOOR AND AWAY FROM THE APPARATUS. AT THE END OF THE TRAVEL OF THE BALANCER, THE UNCOUPLING VALVE RELEASES THE COMPRESSED AIR FROM THE "GRABBER" NOZZLE ALLOWING FOR SMOOTH UNCOUPLING OF THE EXHAUST REMOVAL SYSTEM. THE EXHAUST FAN IS SHUT DOWN AFTER A 3 TO 4 MINUTE TIME PERIOD AFTER DEPARTURE.

### GENERAL NOTE

- VEHICLE EXHAUST SYSTEM AND HOSES MUST BE ABLE TO WITHSTAND IN-STATION VEHICLE MAINTENANCE PROCEDURES WHILE CONNECTED TO SYSTEM.
- MANUFACTURER SHALL PROVIDE MIN. 5-YEAR WARRANTY ON ALL HOSES, MANUFACTURER OF SYSTEM SHALL BE PLYMOVENT 1-800-938-1914.
- INSTALLER SHALL BE FACTORY CERTIFIED FOR INSTALLATION.



NORTH  
**HVAC PLAN**  
 1/4" = 1'-0" F.S. NO. 2  
 M1.2

### NOTES

- PACKAGED ROOFTOP AC UNIT. MOUNT PER MANUFACTURER'S INSTRUCTIONS. PROVIDE FULL SIZED S/A AND R/A FLENUMS. REF. 1/M/D2 AND 2/M/D2
- CEILING MOUNTED EXHAUST FAN. MOUNT PER MANUFACTURER'S INSTRUCTIONS.
- ROOF MOUNTED EXHAUST FAN. MOUNT PER MANUFACTURER'S INSTRUCTIONS. REF. 5/M/D2 FOR DETAIL.
- EVAPORATIVE COOLER. MOUNT PER MANUFACTURER'S INSTRUCTIONS. REF. 4/M/D2 FOR DETAIL.
- GAS UNIT HEATER. MOUNT PER MANUFACTURER'S INSTRUCTIONS. REF. 3/M/D2 FOR DETAIL.
- ROUTE 4" TYPE 'B' FLUE FROM UNIT HEATER, AND UP THRU ROOF TO APPROVED ROOF CAP.
- 8" EXHAUST DUCT UP THRU ROOF TO APPROVED ROOF CAP.
- 10"x10" EXHAUST DUCT UP THRU ROOF TO EXHAUST FAN, TRANSITION TO FAN AS REQUIRED.
- ROUTE 30"x30" DUCT UP THRU ROOF TO EVAPORATIVE COOLER. TERMINATE DUCT WITH DIFFUSION PLATE (VERIFY HEIGHT WITH OWNER AND ARCHITECT).
- PLYMOVENT VEHICLE EXHAUST SYSTEM BY CONTRACTOR MUST BE INSTALLED BY A FACTORY CERTIFIED INSTALLER.
- 6" EXHAUST DUCT FROM VEHICLE EXHAUST SYSTEM, UP THRU ROOF TO EXHAUST FAN.
- 30'-0" PLYMOVENT MODEL 9BTA-315 SLIDING BALANCER TRACK. (SINGLE TRACK WITH 25'-0" OF 4" DIAMETER HOSE) SUSPENDED FROM STRUCTURE PER MANUFACTURER'S INSTRUCTIONS.
- PLYMOVENT SPRING RECOIL BALANCER WITH TROLLEY SYSTEM. (TYP.)
- VEHICLE EXHAUST CONTROL PANEL, PLYMOVENT MODEL 092-1240, MOUNT ON CMU WALL PER MANUFACTURER'S INSTRUCTIONS. COORDINATE LOCATION WITH GENERAL CONTRACTOR. COORDINATE ALL CONTROLS AND ELECTRICAL REQUIREMENTS WITH ELECTRICAL CONTRACTOR.
- 25 FT. HOSE, PLYMOVENT MODEL 9BTA-315.
- PROVIDE 54"x48" RELIEF LOUVER EQUAL TO RUSKIN MDL. ELF6315 WITH BACKDRAFT DAMPER AND BIRDSCREEN. COORDINATE EXACT LOCATION WITH ARCHITECTURAL AND STRUCTURAL PLANS.

### NOTICE

- REFER TO DIFFUSER AND GRILLE SCHEDULE FOR ANY UNMARKED RUN-OUT SIZES.
- COORDINATE EXACT ROUTING OF DUCTWORK AND PIPING WITH ALL TRADES, AND EXISTING STRUCTURE.
- COORDINATE LOCATION OF ROOF MOUNTED EQUIPMENT WITH STRUCTURAL AND ARCHITECTURAL PLANS.
- MAINTAIN 10 FT. MINIMUM DISTANCE FROM OUTSIDE AIR INTAKES TO PLUMBING VENTS AND EXHAUST OUTLETS.
- VERIFY LOCATION AND SIZES OF ALL EXISTING PIPING, AND EQUIPMENT.
- FIELD VERIFY AND COORDINATE SAW CUTTING OF SLAB, BEFORE BEGINNING OF WORK.
- COORDINATE ALL GRILLES WITH ARCHITECTURAL PLANS AND ELECTRICAL LIGHTING PLANS.

### RECORD DRAWINGS

AS BUILT INFORMATION WAS PROVIDED BY THE CONTRACTOR. WESTAR ARCHITECTURAL ASSUMES NO LIABILITY FOR ACCURACY OF ITS CONTENTS.

ABF CONSULTING ENGINEERS  
 Las Vegas, Nevada 89103  
 Tel: (702) 248-0338  
 Sparks, Nevada 89431  
 Tel: (775) 674-2222  
 Phoenix, Arizona 85014  
 Tel: (602) 274-1801

WESTAR  
 ARCHITECTURAL GROUP, / NEVADA INC.  
 LAS VEGAS \* PHOENIX  
 ARCHITECTURE \* PLANNING \* PROJECT MANAGEMENT  
 3900 MEADOWS LANE, SUITE 220 LAS VEGAS, NEVADA 89107  
 TELEPHONE: (702) 678-0000 FAX: (702) 678-8480

A FACILITY IMPROVEMENT FOR  
**FIRE STATION 2, 7, & 9**  
 LAS VEGAS, NEVADA

DATE	3/26/03	DATE	
REVISION DESCRIPTION		REVISION DESCRIPTION	
NUMBER	1	NUMBER	
PROJECT NUMBER	0833	PROJECT NUMBER	
DRAWN BY	S.F. KSD	DRAWN BY	
ISSUE DATE	09-13-01	ISSUE DATE	
SCALE	1/4" = 1'-0"	SCALE	
SHEET NUMBER	630.99	SHEET NUMBER	
	<b>M1.2</b>		

08/07/03