

This document, including the ideas and designs it contains, is an instrument of professional services rendered by the architect / engineer. This document may not be used or copied in whole, or in part, for any purpose other than that specific project without the expressed written consent of Westar Architectural Group, Inc.

DOOR SCHEDULE

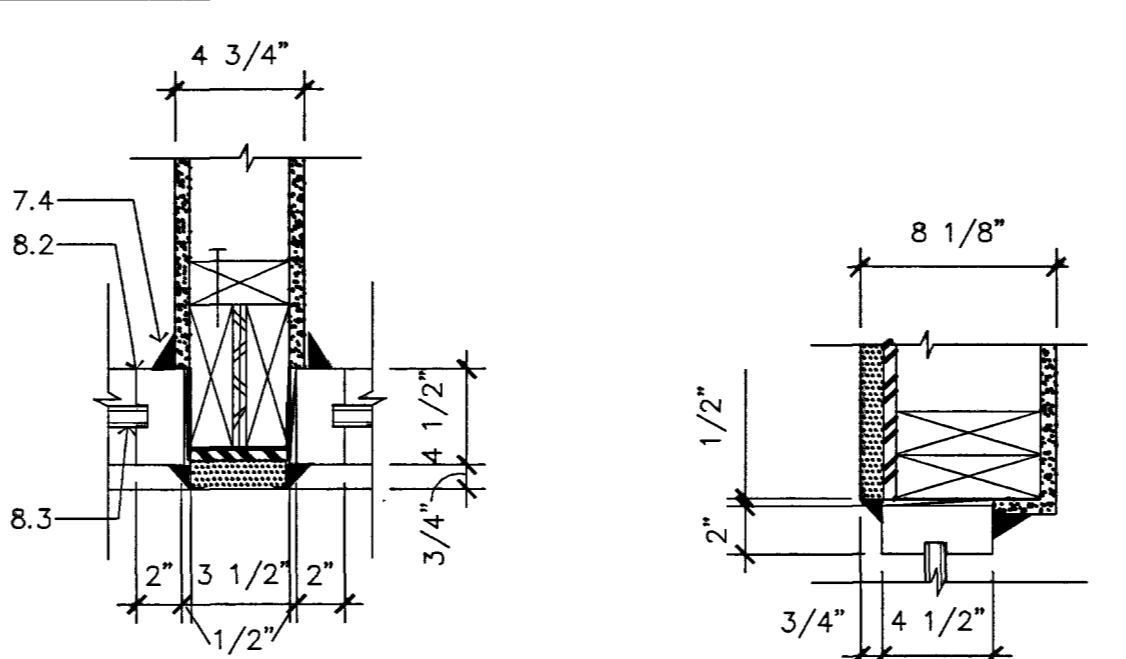
DR. NO.	DOOR SIZE			DOOR			FRAME			HDW	FIRE RATING	REMARKS
	WIDTH	HEIGHT	THICK	TYPE	MAT	FIN	MAT	FIN	DET			
1	3'-0"	7'-0"	1 3/4"	B	MTL	PNT	MTL	PNT		1	NONE	
2	3'-0"	7'-0"	1 3/4"	D	MTL	PNT	MTL	PNT		2	NONE	
3	3'-0"	7'-0"	1 3/4"	A	MTL	PNT	MTL	PNT		2	NONE	
4	3'-0"	7'-0"	1 3/4"	D	MTL	PNT	MTL	PNT		2	NONE	
5	12'-0"	14'-0"	-	C	MTL	PNT	-	-	-	-	NONE	PNT OVER FACTORY PRIMER
6	12'-0"	14'-0"	-	C	MTL	PNT	-	-	-	-	NONE	PNT OVER FACTORY PRIMER
7	3'-0"	7'-0"	1 3/4"	B	MTL	PNT	MTL	PNT		3	NONE	
8	3'-0"	7'-0"	1 3/4"	A	SCWD	PNT-SG	MTL	PNT		4	NONE	
9	3'-0"	7'-0"	1 3/4"	A	SCWD	PNT-SG	MTL	PNT		5	NONE	
10	3'-4"	7'-0"	-	-	-	-	MTL	PNT		-	NONE	CURTAIN BY FIRE DEPT
11	3'-4"	7'-0"	-	-	-	-	MTL	PNT		-	NONE	CURTAIN BY FIRE DEPT
12	3'-4"	7'-0"	-	-	-	-	MTL	PNT		-	NONE	CURTAIN BY FIRE DEPT

HARDWARE TYPES

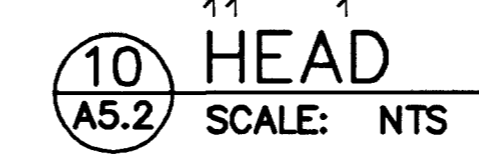
- 1 - 1 1/2 PAIR NRP HINGES
- LEVERED STOREROOM FUNCTION MORTISED LOCKSET
- CLOSER (PUSH SIDE)
- SILENCERS
- THRESHOLD
- WEATHERSTRIPPING
- WALL STOP
- ELEC. LATCH VON DUPRIN
- 2 - 1 1/2 PAIR BUTT HINGES
- LEVERED CLASSROOM FUNCTION LOCKSET
- SILENCERS
- DOOR STOP
- 3 - 1 1/2 PAIR BUTT HINGES
- LEVERED CLASSROOM FUNCTION LOCKSET
- CLOSER
- SILENCERS
- WALL STOP
- KICK STOP
- 4 - 1 1/2 PAIR BUTT HINGES
- LEVERED CLASSROOM FUNCTION LOCKSET
- CLOSER
- SILENCERS
- WALL STOP
- KICK STOP
- 5 - 1 1/2 PAIR BUTT HINGES
- LEVERED PRIVACY FUNCTION LOCKSET W/ PUSH BUTTON LOCKING
- SILENCERS

ABBREVIATIONS

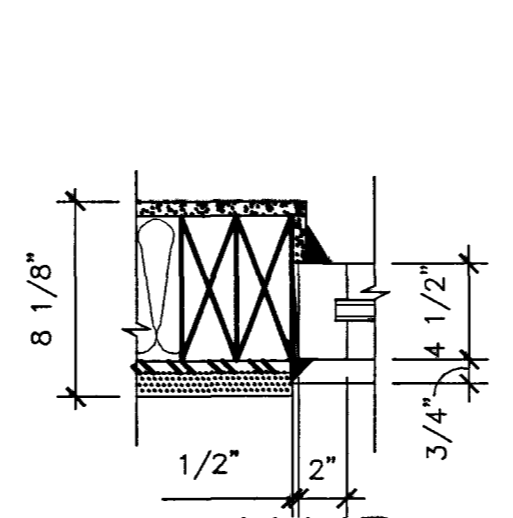
ALUM	ALUMINUM
FACT	FACTORY
MTL	METAL
PNT	PAINT
PNT-SG	PAINT- SEMI GLOSS
SCWD	SOLID CORE WOOD



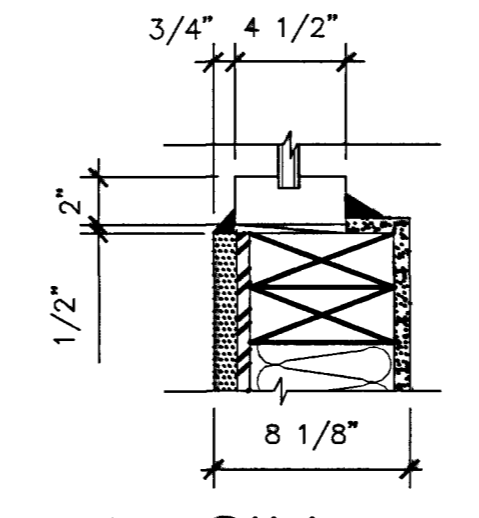
9 JAMB
SCALE: NTS



10 HEAD
SCALE: NTS

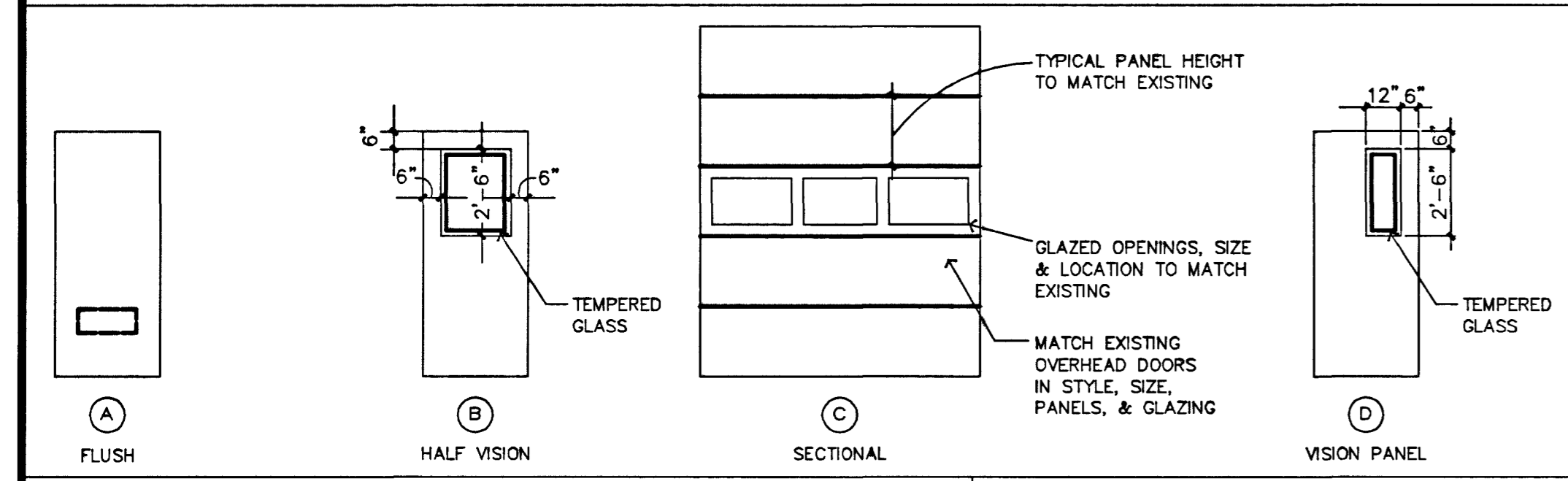


7 JAMB
SCALE: NTS

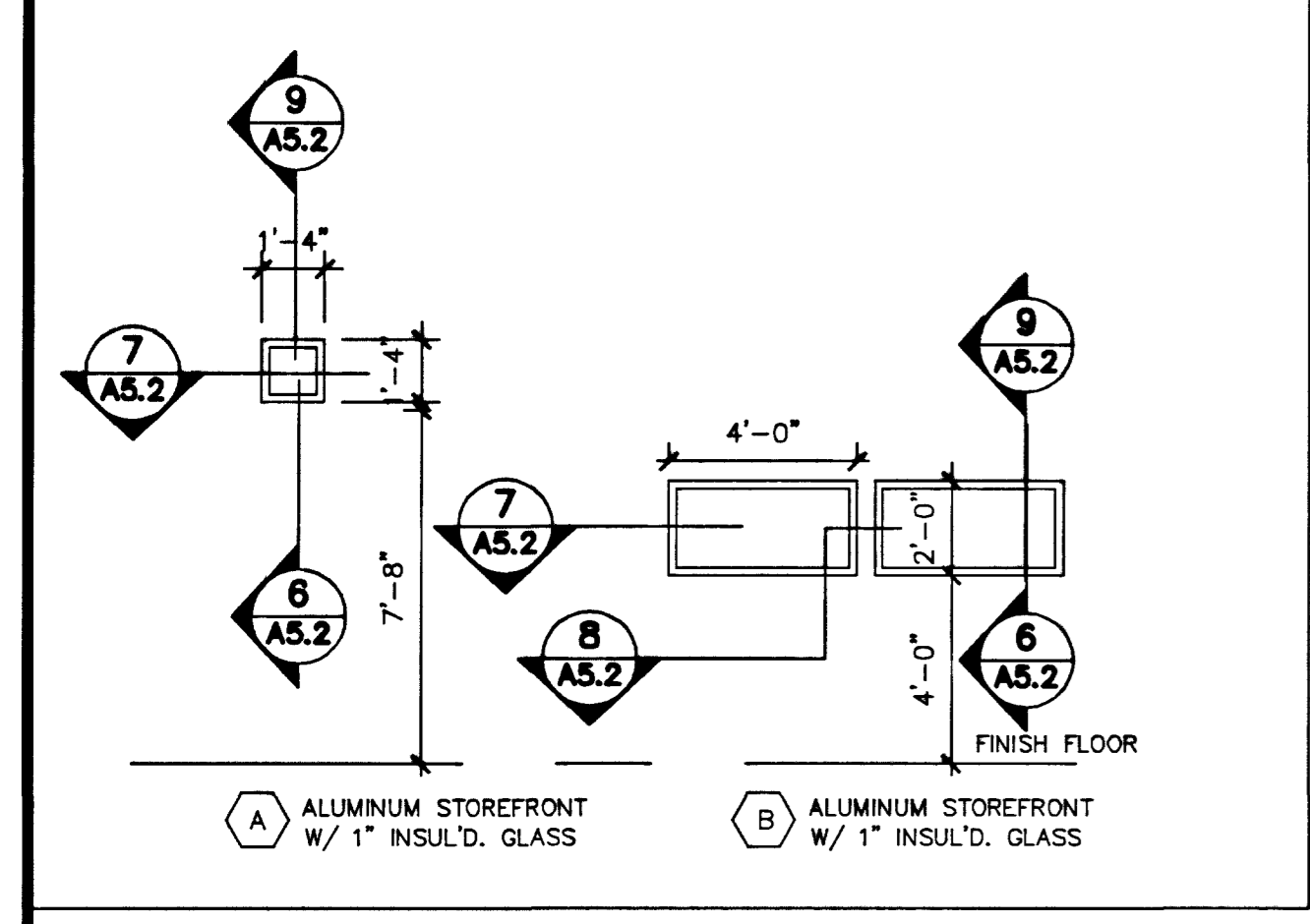


8 SILL
SCALE: NTS

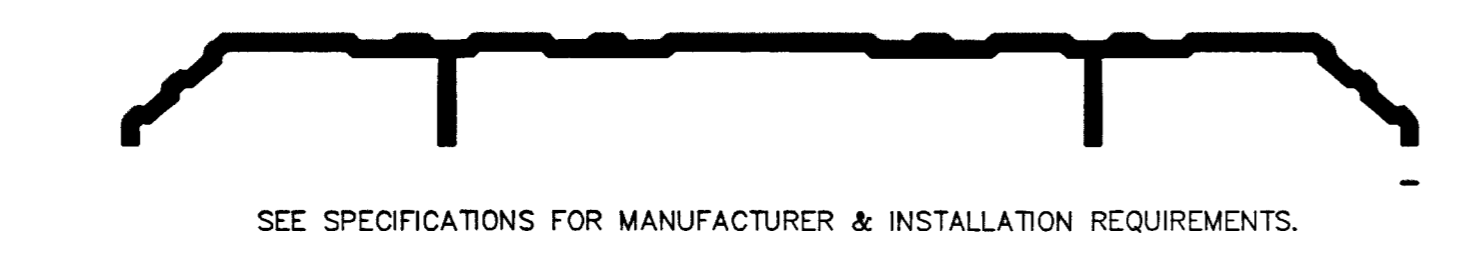
DOOR TYPES



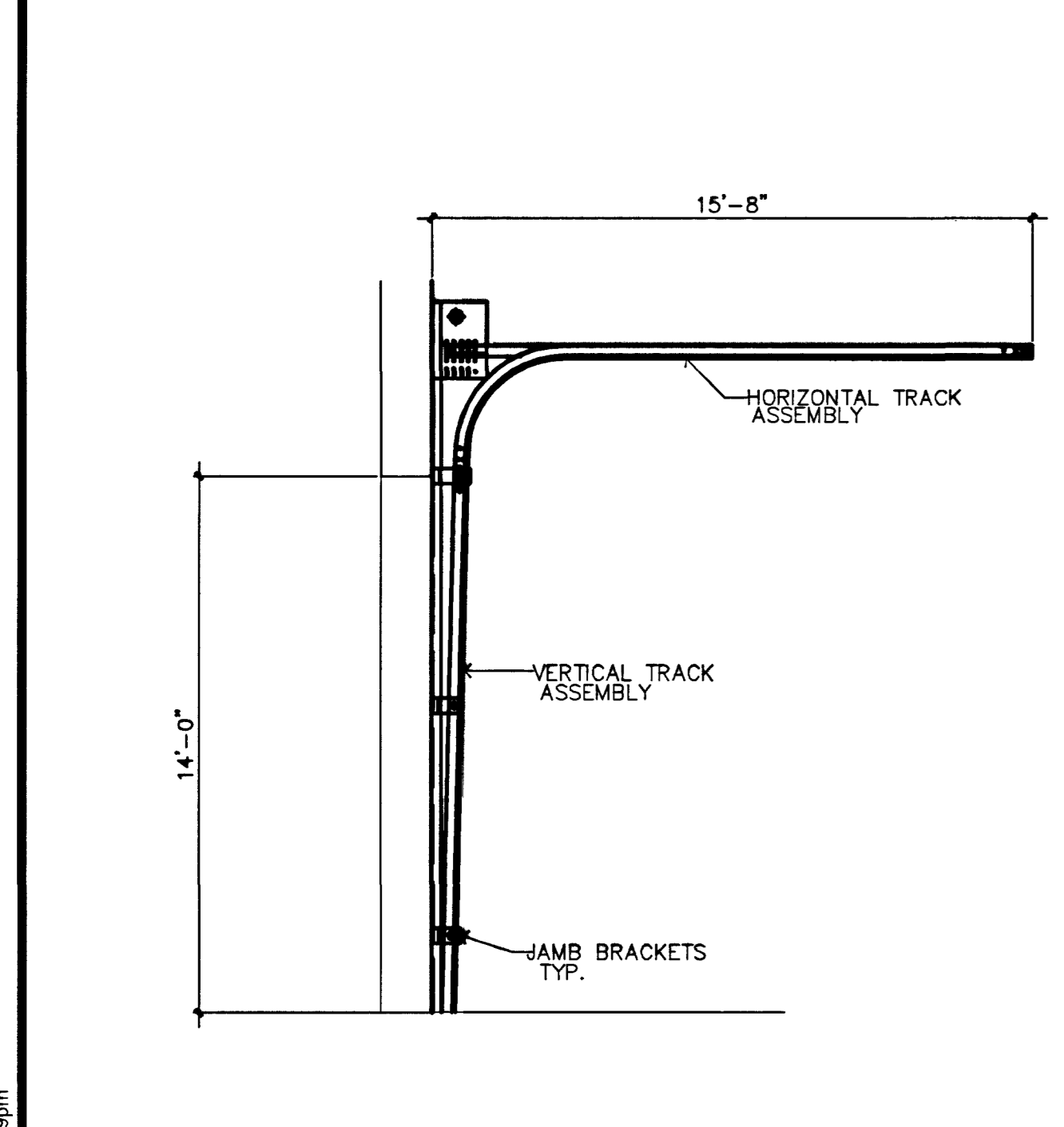
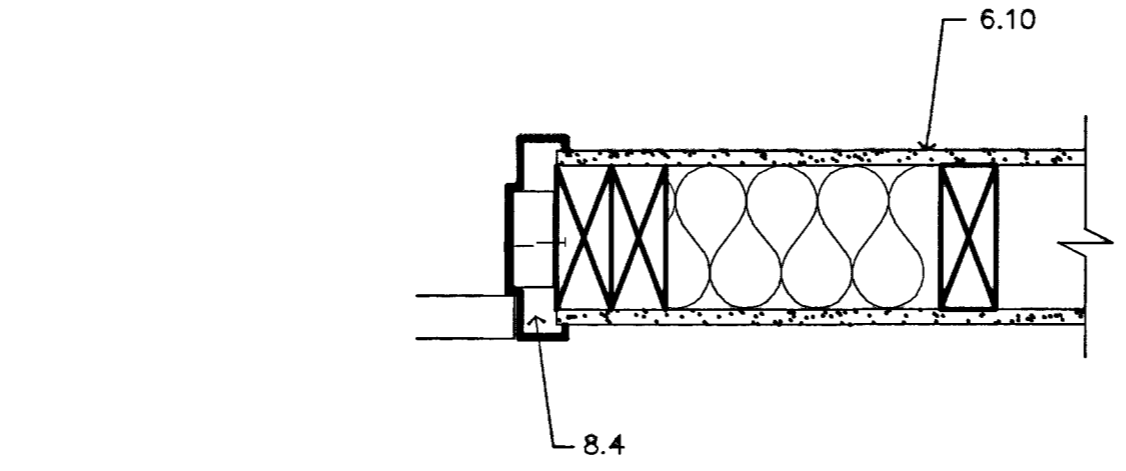
WINDOW TYPES



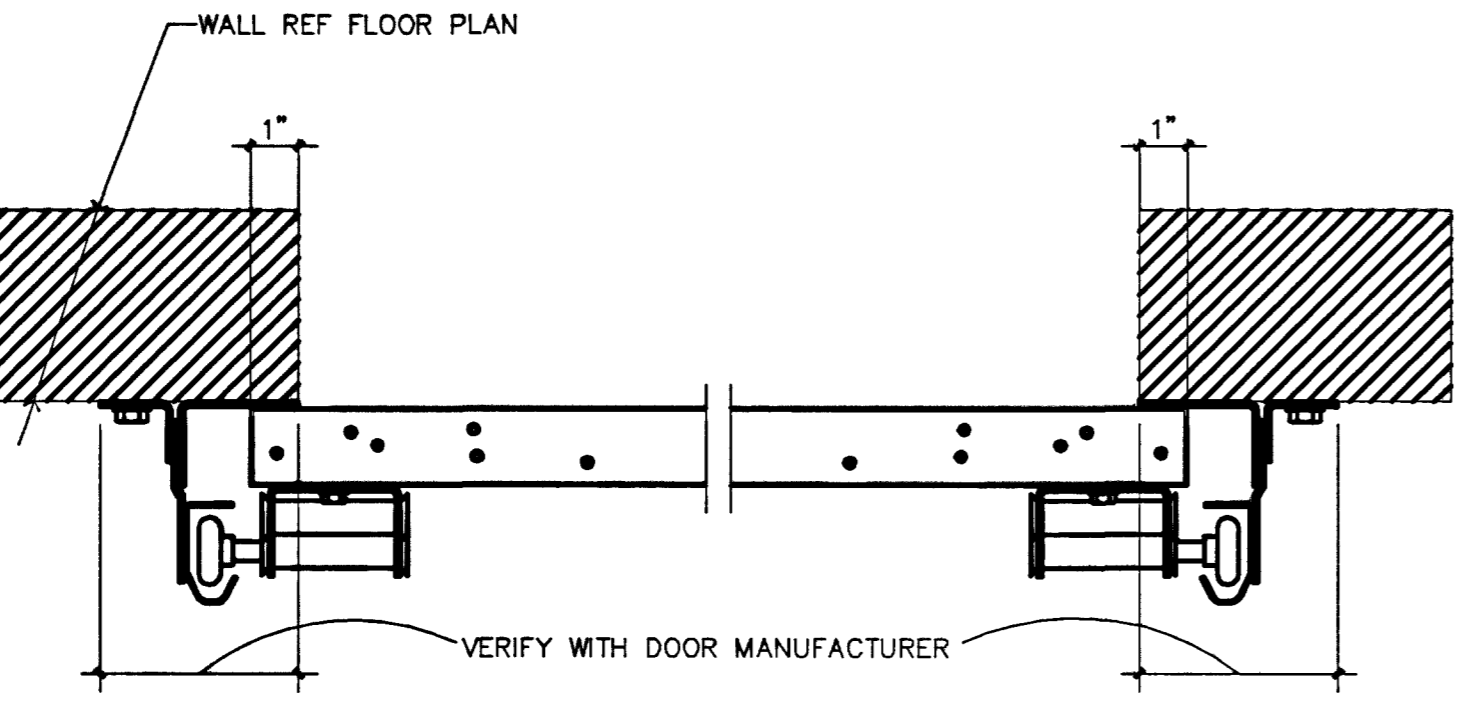
5 ALUM THRESHOLD
SCALE: NTS



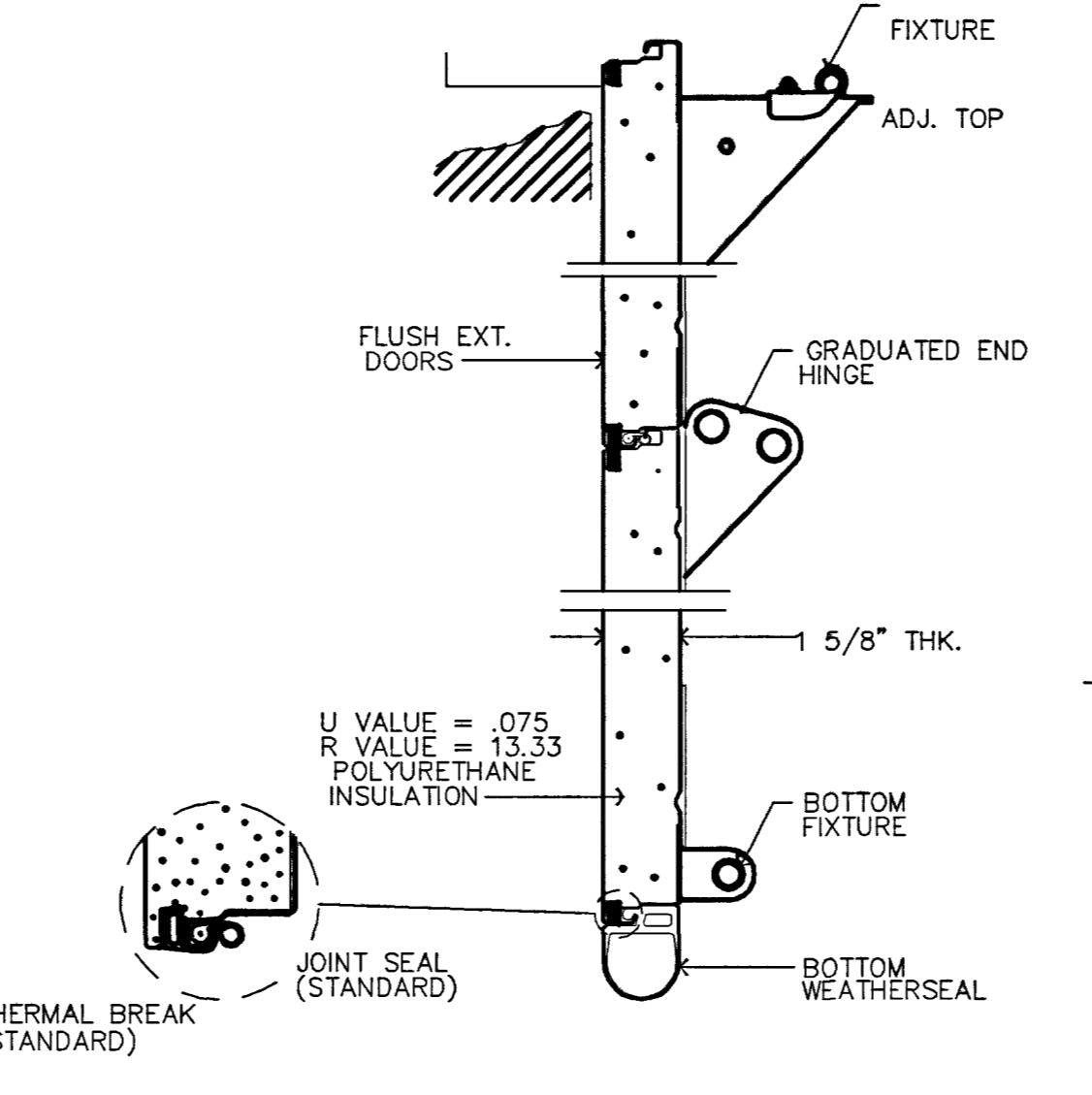
6 TYP. DOOR JAMB
SCALE: NTS



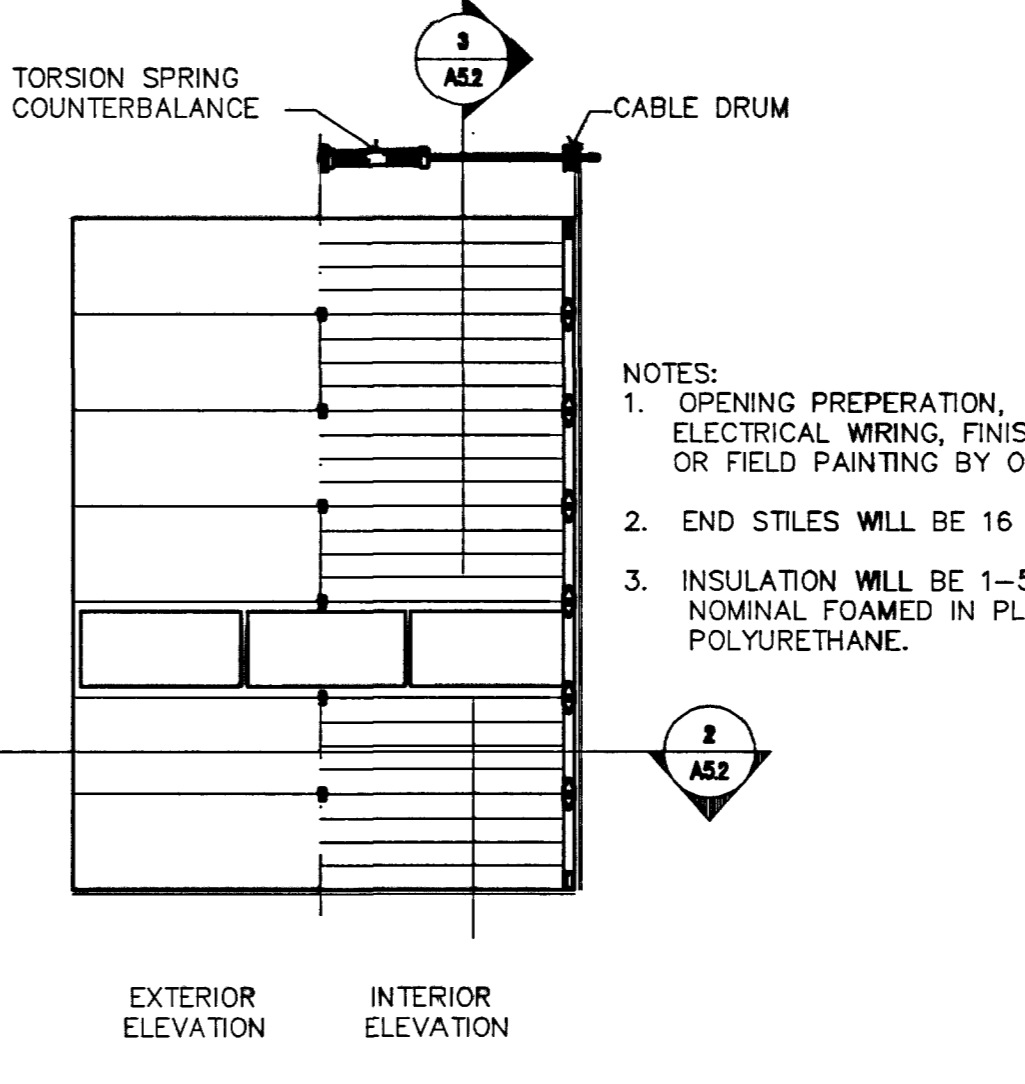
1 O.H. DOOR TRACK SECTION
SCALE: NTS



2 O.H. DOOR PLAN SECTION
SCALE: NTS



3 O.H. DOOR SECTION
SCALE: NTS



4 O.H. DOOR ELEVATION
SCALE: NTS

RECORD DRAWINGS
AS BUILT INFORMATION WAS PROVIDED BY THE CONTRACTOR WESTAR ARCHITECTURAL ASSUMES NO LIABILITY FOR ACCURACY OF ITS CONTENTS.

- ### KEYNOTES:
2. SITE
 - 2.1 GRANULAR CUSHION
 - 2.2 CONCRETE APRON
 - 2.3 FLAG POLE LIGHT SENSOR & ELEC. UNDERGROUND CONDUIT OUTLET (F.S. #2 ONLY)
 - 2.4 6\"/>
3. CONCRETE
 - 3.1 CONCRETE SLAB - REFER TO STRUCTURAL
 - 3.2 FASTEN TO CONCRETE WITH SHOT PINS @ 24\"/>
 - 3.3 EXISTING CONCRETE SLAB
 - 3.4 PROVIDE LEVEL LANDING AT DOOR, STATION #2 & #7. SEE CIVIL DWGS.
4. MASONRY
 - 4.1 4\"/>
 - 4.2 EXISTING CMU
 - 4.3 SMOOTH FACED CMU VENEER
 - 4.4 SPLIT FACED CMU VENEER
 - 4.5 SPLIT FACED- SINGLE SCORED CMU VENEER
 - 4.6 THINSET MORTAR BED
5. METALS
 - 5.1 STEEL LADDER ASSEMBLY
 - 5.2 -W/O/D
 - 5.3 G.I. HANGER AT EACH END.
 - 5.4 SIMPSON 2\"/>
 - 5.5 SIMPSON STC CLIP - TO BLOODING
 - 5.6 FASTEN WITH SELF TAPPING SCREWS
 - 5.7 FASTEN WITH SHOT PINS @ 24\"/>
 - 5.8 TERMINATION BAR FASTENER
 - 5.9 FASTENER & PLATE @ 12\"/>
 - 5.10 EVAP. COOLER SCREEN ON STATION #7 ONLY
 - 5.11 PLYWOOD EDGE NAIL.
 - 5.12 NAILING PER STRUCTURAL
 - 5.13 DROP ROD BRACKET BY MANUFACTURER, TYPICAL OF 3
 - 5.14 5/8\"/>
 - 5.15 3/8\"/>
 - 5.16 EXPANDED METAL FENCE, FLEED CUT AS REQUIRED.
 - 5.17 SELF LATCHING, ELECTROPLATED ZINC.
 - 5.18 1/8\"/>
 - 5.19 1/2\"/>
 - 5.20 2\"/>
 - 5.21 2\"/>
 - 5.22 3/4\"/>
 - 5.23 2\"/>
6. WOOD AND PLASTICS
 - 6.1 2x6 WOOD STUDS @ 16\"/>
 - 6.2 HEADER - REFER TO STRUCTURAL
 - 6.3 SHIM
 - 6.4 2x6 SILL PLATE
 - 6.5 PLYWOOD SHEATHING - REFER TO STRUCTURAL
 - 6.6 3/4\"/>
 - 6.7 CUSTOM CABINETS
 - 6.8 - JUST REFER TO STRUCTURAL
 - 6.9 PLYWOOD DECK - REFER TO STRUCTURAL
 - 6.10 WALL PARTITION - REFER TO SHEET A5.1
 - 6.11 EXISTING FRAMING
 - 6.12 2\"/>
 - 6.13 REFER TO STRUCTURAL
 - 6.14 DOUBLE 2x TOP PLATE
 - 6.15 2\"/>
 - 6.16 REMOVE EXISTING WINDOW & FINISH EXISNG OPENING
 - 6.17 1x2 WOOD STUDS STOP
 - 6.18 (5) SHELVES, 16\"/>
 - 6.19 BUILT-IN CABINET
 - 6.20 MECHANICAL UNIT SCREENMRE ASSEMBLY, STATION #7 ONLY.
 - 6.21 GYPSUM BOARD ON 2x6 WOOD JOIST @ 24\"/>
 - 6.22 2x BLOCKING AT 24\"/>
 - 6.23 PROVIDE WEB STIFFENERS @ BLOCKING.
 - 6.24 2x FURRING
7. THERMAL AND MOISTURE PROTECTION
 - 7.1 3\"/>
 - 7.2 WATERPROOF BUILDING FELT
 - 7.3 CAP FLASHING - PAINT PER EXTERIOR COLOR LEGEND
 - 7.4 BATT INSULATION
 - 7.5 SEALANT - REFER SPECS
 - 7.6 SEALANT AND BACKER ROD - REFER SPECS
 - 7.7 SILL FLASHING
 - 7.8 RIGID INSULATION CRICKET
 - 7.9 WALKWAY PADS - 30\"/>
 - 7.10 RIGID INSULATION - MIN. 4\"/>
 - 7.11 FLASHING SCREWS
 - 7.12 1/2\"/>
 - 7.13 WATER CUTOFF MASTIC
 - 7.14 BONDING ADHESIVE
 - 7.15 REINFORCED MEMBRANE
 - 7.16 HOT AIR WELD
 - 7.17 CONTINUOUS COUNTER FLASHING
 - 7.18 FRY - RELET
 - 7.19 REMOVE EXISTING STUCCO TO STUDS OR SHEAR WALLS TO TOP OF NEW ROOF DECK
 - 7.20 5/8\"/>
 - 7.21 5/8\"/>
8. DOORS AND WINDOWS
 - 8.1 OVERHEAD DOOR
 - 8.2 ALUMINUM STOREFRONT
 - 8.3 1\"/>
 - 8.4 ALUMINUM METAL DOOR AND FRAME
 - 8.5 GARAGE DOOR OPERATOR ASSEMBLY
 - 8.6 EXISTING FRAME TO REMAIN
 - 8.7 REFER WINDOW SCHEDULE
 - 8.8 REFER DOOR SCHEDULE
 - 8.9 NOT USED
 - 8.10 NOT USED
 - 8.11 NOT USED
 - 8.12 NOT USED
 - 8.13 PROVIDE DOOR WITH CLASSROOM LOCKSET
 - 8.14 REMOVE EXISTING FIXED WINDOW ASSEMBLY AND PATCH OPENING AND FINISH TO MATCH ADJACENT WALL FINISH
9. FINISHES
 - 9.1 5/8\"/>
 - 9.2 BASE PER FINISH SCHEDULE
 - 9.3 SUSPENDED ACOUSTICAL CEILING
 - 9.4 NOT USED
 - 9.5 EXISTING CEILING
 - 9.6 REFER FINISH SCHEDULE A-5.1
 - 9.7 METAL CORNER BEAD
 - 9.8 TAPS, BED & TEXTURE
 - 9.9 METAL EDGE BEAD
 - 9.10 APPLY WITH ADHESIVE
 - 9.11 HEAVY DUTY COAT HOOKS (4) @ 72\"/>
 - 9.12 3\"/>
 - 9.13 WALL HINGE COUNTER WITH FRONT SCRT
 - 9.14 60\"/>
 - 9.15 4 - 6\"/>
 - 9.16 G.I. REVEAL
 - 9.17 G.I. DRIP EDGE FLASHING
 - 9.18 EXISTING PLYWOOD
 - 9.19 G.I. CONTROL JOINT
 - 9.20 CONTINUOUS G.I. WEED SCREED, TYP.
 - 9.21 PROVIDE WHITE BLOCK LETTERING STYLE, TO MATCH EXISTING
10. SPECIALTIES
 - 10.1 BUILT-IN LOCKER CABINETS
 - 10.2 SINGLE "WHITE" COAT HOOK
 - 10.3 WHITE LETTERING TO MATCH EXISTING
 - 10.4 WALL TO WALL HEAVY DUTY CHROME 1\"/>
11. EQUIPMENT
 - 11.1 INSIDE MOUNTED DUETTE BLINDS - CONTRACTOR FURNISH & INSTALL - AS SELECTED BY FIRE DEPT.
 - 11.2 BULLETIN BOARD
 - 11.3 METAL LOCKERS - CONTRACTOR FURN. & INSTALL (6) 24\"/>
 - 11.4 WHITE BOARD 24\"/>
 - 11.5 FLOOR SINK
 - 11.6 TRENCH DRAIN
 - 11.7 MOP SINK
 - 11.8 HOSE BIB WITH PORTABLE HOSE REEL (ONE LOCATION ONLY)
 - 11.9 TOILET PAPER DISPENSER
 - 11.10 FLOOR DRAIN
 - 11.11 MIRROR
 - 11.12 TRASH/TOWEL DISPENSER RECESSED
 - 11.13 FIRE EXTINGUISHER 5lb 3-A: 40-B: C WALL HUNG
 - 11.14 ROOF DRAINS - REROUTE @ FS #2 ONLY
 - 11.15 RELOCATE FIRE SPRINKLER TEST VALVE & SPLASH BLOCK (F.S. #7 & #9)
 - 11.16 UNIT HEATER - REF. MECH
 - 11.17 AIR HOSE REEL - REF. MECH
 - 11.18 EVAPORATIVE COOLER - REF. MECH
 - 11.19 O.H. DOOR MOTOR - REF. MECH
 - 11.20 TYPE "B" VENT - REF. MECH
 - 11.21 DIESEL EXHAUST SYSTEM FAN/VENT
 - 11.22 EXHAUST FAN
 - 11.23 VENT THRU ROOF
16. ELECTRICAL
 - 16.1 PROVIDE ELECTRIC LATCH
 - 16.2 EXISTING SIGN TO REMAIN - TYPICAL OF STATION 7 & 9
 - 16.3 NEW STATION SIGN PER LOCATION (STATION 2, 7 & 9)
 - 16.4 PROVIDE J-BOX @ 48\"/>

WESTAR

ARCHITECTURAL GROUP, NEVADA INC.
LAS VEGAS • PHOENIX
ARCHITECTURE • PLANNING • PROJECT MANAGEMENT

3900 MEADOWS LANE SUITE 220 LAS VEGAS, NEVADA 89107
TELEPHONE: (702) 878-0000 FAX: (702) 878-8430

WESTAR

**A FACILITY IMPROVEMENT FOR
FIRE STATION 2, 7, & 9
LAS VEGAS, NEVADA**

DATE	REVISION DESCRIPTION
03/17/03	AS BUILT CORRECTIONS

PROJECT NUMBER: 0930

DRAWN BY: GJ

SCALE: 1/4"=1'-0"

ISSUE DATE: AUGUST 31, 2001

SHEET NUMBER: 630.99

A-5.2