



REVISIONS
 6/25/02 CLV REV
 CONSULTANT

DEC INC
 2000 S. RANCHO RD.
 LAS VEGAS, NEVADA 89102
 (702) 671-5154

CITY OF LAS VEGAS, NEVADA
 FIRE STATION #44
 ELECTRICAL POWER PLAN

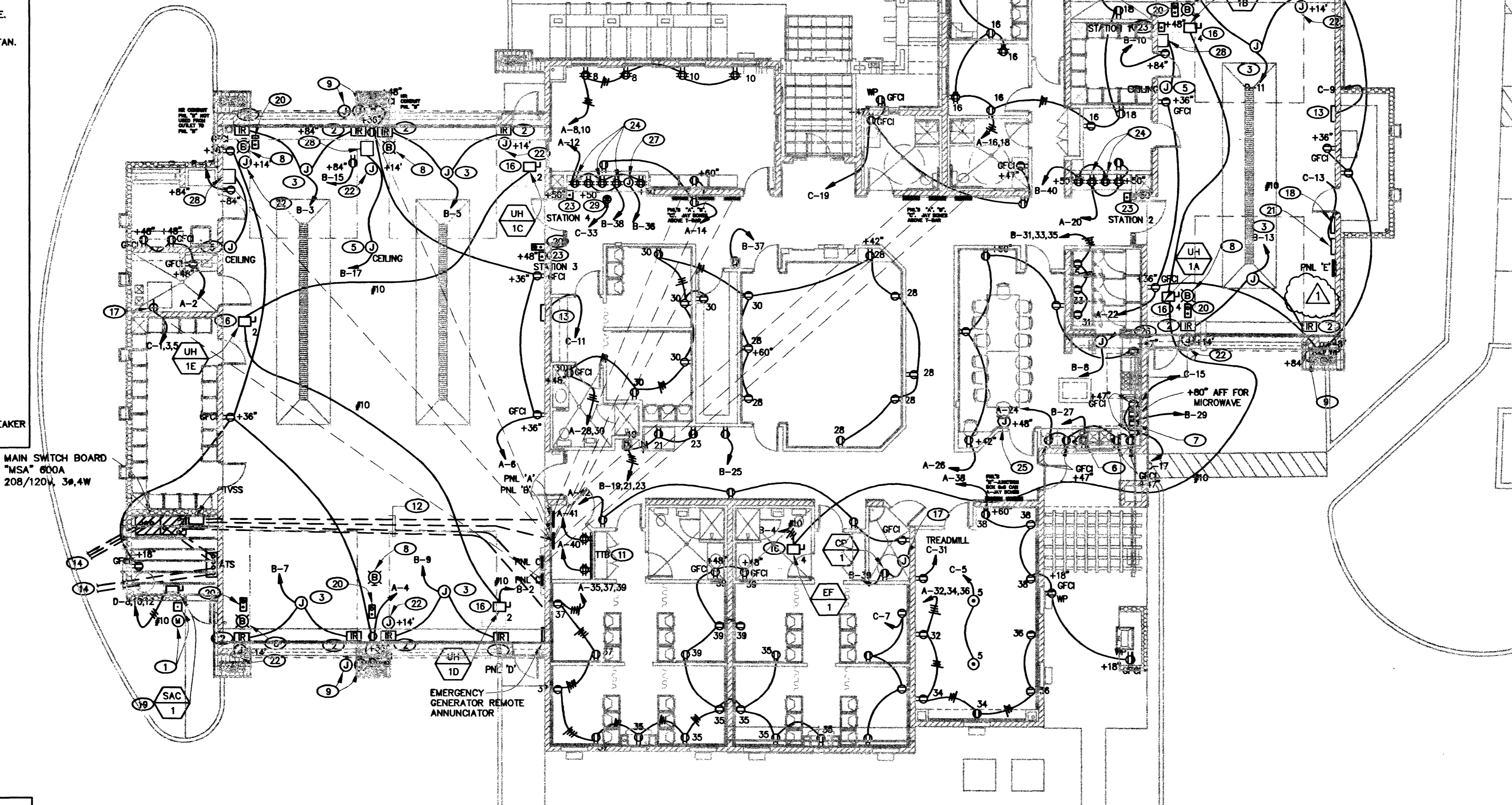
DEPARTMENT OF PUBLIC WORKS
 ARCHITECTURAL SERVICES
 400 EAST STEWART AVENUE
 LAS VEGAS, NEVADA 89103
 PHONE: (702) 226-6333
 FAX: (702) 382-3132
 TDD: (702) 385-9108

PERKIN ENGINEERS CONSULTANTS
 DIVISION AOA

DATE: 4/20/01
 SCALE: AS SHOWN
 PROJECT: 630.97
 SHEET: 96 OF 106
 E2.1

SHEET NOTES

- 1 LOCATION OF REMOTE METER & SHUNT PUSHBUTTON. SEE SINGLE LINE DIAGRAM.
- 2 PROVIDE INFRARED BEAM DETECTOR A DOOR OPENING INTERLOCK WITH DOOR MOTOR SUCH THAT WHEN BEAM IS BROKEN AT 3'-0", THE DOOR WILL STOP. ELECTRICAL CONTRACTOR TO PROVIDE & INSTALL UNIT COMPATIBLE WITH DOOR CONTROLLER AND HARDWARE.
- 3 CONNECT TO OVERHEAD DOOR MOTOR AND CONTROLLER. PROVIDE ALL NECESSARY DEVICES (STARTER, WIRING, ETC.) AS REQUIRED TO HAVE A PROPERLY WORKING SYSTEM. SEE OVERHEAD DOOR SPECIFICATION.
- 4 NOT USED.
- 5 JUNCTION BOX FOR BATTERY CHARGER. SEE DETAIL 5 ON SHEET E6.1. COORDINATE CEILING JUNCTION BOX LOCATION WITH OWNER.
- 6 FOR GARBAGE DISPOSAL.
- 7 FOR DISHWASHER.
- 8 CONNECT ROTATING RED BEACON TO DOOR OPENER. WIRE SUCH THAT BEACON ILLUMINATES WHEN DOOR IS IN TRAVEL AND STOPS WHEN DOOR IS FULLY OPEN. FIXTURE TO BE MOUNTED AT 84".
- 9 J BOX @ 84" AFF FOR REMOTE CONTROL.
- 10 NOT USED.
- 11 TELEPHONE TERMINAL BOARD. PROVIDE A FIRE RETARDANT TREATED PLYWOOD TO COVER ENTIRE WALL AND A #6 GROUND WIRE. VERIFY OTHER REQUIREMENTS WITH TELEPHONE COMPANY.
- 12 UNDERGROUND FEEDER CONDUIT. SEE SINGLE LINE DIAGRAM FOR SIZE.
- 13 LOCATION OF PLYMOVENT PANEL COORDINATE REQUIREMENTS WITH VENDOR AND PROVIDE ALL CONNECTION TO THE UNIT & EXHAUST FAN.
- 14 SEE CIVIL PLANS FOR CONTINUATION.
- 15 NOT USED.
- 16 120V, 1P, 15A, DISC. SW.
- 17 RECEPTACLE FOR EXTRACTOR. CONTRACTOR TO VERIFY RATING. REVISED ACCORDINGLY.
- 18 LOCATION OF DISPENSING UNIT CONTROL PANELS.
- 19 250V, 2P, 30A, WP DISCONNECT SWITCH FOR AIR COMPRESSOR.
- 20 MANUAL CLOSE/OPEN PUSHBUTTON FOR OVERHEAD GARAGE DOOR. COORDINATE REQUIREMENTS WITH VENDOR. MOUNT AT +48"
- 21 LEAK DETECTION PANEL.
- 22 J BOX FOR OVERHEAD DOOR PRESSURE SENSOR. COORDINATE & PROVIDE ALL REQUIREMENTS OF OVERHEAD VENDOR.
- 23 TRAFFIC CONTROL PUSHBUTTON. SEE C-11 FOR CONDUIT ROUTING. MOUNT AS SHOWN.
- 24 CONTRACTOR TO COORDINATE LOCATION OF UNDER COUNTER RECEPTACLES WITH CABINET PARTITIONS. DO NOT LOCATE RECEPTACLES OR BOXES ON CABINET PARTITIONS.
- 25 LOCATION OF ANSUL SYSTEM PULL SWITCH. ROUTE TO ANSUL SYSTEM.
- 26 LOCATION OF ANSUL SYSTEM. VERIFY LOCATION WITH ARCHITECT.
- 27 LOCATION OF TRAFFIC CONTROLLER BOX (12" X18" X6"). SEE C-11 FOR CONDUIT ROUTING.
- 28 LOCATION OF BATTERY CHARGER & RECEPTACLE. SEE DETAIL 5 ON SHEET E6.1.
- 29 (2) DUPLEX OUTLETS IN 24"X 24"X4" ALARM J-BOX-POWER FOR SPEAKER TIMERS.



SHEET GENERAL NOTES

- 1 ALL SURFACE MOUNTED ELECTRICAL BOXES INSIDE THE APPARATUS BAY SHALL BE EITHER "HANDY BOXES" OR "BELL BOXES".
- 2 ALL MOUNTING HEIGHTS SHOWN ARE FROM THE CENTER OF DEVICE. (COD)
- 3 SEE MECHANICAL PLAN FOR LOCATION OF T-STAT WHICH MUST BE PROVIDED BY CONTRACTOR.

ELECTRICAL POWER PLAN
 SCALE: 1/8"=1'-0"

57318

Q:\Projects\0000000241 FIRE STATION #44\ELEC\2.1.dwg, 09/14/2003 03:45:36 PM, Administrator
 PERKIN ENGINEERS CONSULTANTS IS A REGISTERED PROFESSIONAL ENGINEERING FIRM. THE DESIGN AND SPECIFICATIONS SHOWN ON THIS DRAWING ARE THE PROPERTY OF PERKIN ENGINEERS CONSULTANTS. NO PART OF THIS DRAWING IS TO BE REPRODUCED OR TRANSMITTED IN ANY FORM OR BY ANY MEANS, ELECTRONIC OR MECHANICAL, WITHOUT THE WRITTEN PERMISSION OF PERKIN ENGINEERS CONSULTANTS.